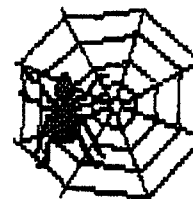
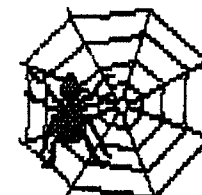


FIRST CLASS MAIL



BORIS THE SPIDER

A Journal of Duplicitous Doings,
Raw Power, and Naked Greed
"Oh, what a tangled web we weave
When first we practice to deceive!"
-- Sir Walter Scott --



8 Feb 07

VOLUME IX, #2

(#258)

ANDERSON WINS MAHARAJA!

Dave Anderson's Purples cruised to victory with a comfortable 22 VP lead over Rudy Zodda's Greens in our first game of **MAHARAJA**.

This leaves another page open for another game. With **PUERTO RICO** and **JUNTA** also close to finishing, we may have a glut of open pages. We will start the next **BRITANNIA** as soon as we get a fourth. We have four (Zodda, Dave A, Khaoz, Morrison; could use up to three more) for **HISTORY OF THE WORLD**, so we'll start "Kolchas" next time. Note that Khaoz lives with stepdad Dave Anderson. The revised House Rules can be found at Reference 1.

IMMEDIATE GAME OPENINGS:

HISTORY IF THE WORLD: Need 1 to 3 more

MERCHANT OF VENUS: Need 1 to 3 more.

SILVERTON: Need 1 to 3 more.

WIZARD'S QUEST: Need 1 to 3 more.

BORIS'S BULLETIN BOARD

THOUGHT FOR THE MONTH: "I know of no higher fortitude than stubbornness in the face of overwhelming odds." -- Louis Nizer

NEW ON THE WEBSITES: **CIRCUS MAXIMUS** "V" has been transferred to the Finished folder. The Hall of Fame file has been updated.

PICTURE OF THE MONTH: GoogleEarth picture of my house. The marker is about 100 ft too westward.

The 11th Annual Chattanooga Rail Game Challenge will be held 16-18 Feb 07 at the Country Suites Inn off Exit 5 of I-75 in Chattanooga, TN. Boris is planning on attending and is looking for a roommate to split the room expense. Visit Reference 1 for details of past CRGCs.

BOOS & KUDOS

The Madame Bolduc Press Excellence Award and free issue go this month to Rick Copeland for his press in *Boris XVIII*.

This month's Ms Nar Super-Sudsy Bomb is lobbed at Bob Dowrey for missing **KINGMAKER** orders.

REFERENCE:

1. <http://hometown.aol.com/prbolduc/boris/hrules/HotW.html>
2. <http://home.highertech.net/~derrick/gaming.html>

PERSONAL COMMUNICATION HERE (maybe):

BORIS THE SPIDER

c/o 203 Devon Ct

FWB, FL 32547-3110

<http://hometown.aol.com/prbolduc/boris/borishome.htm>

TABLE OF CONTENTS

Addresses	pp 18-19
BLACKBEARD	p 8
BRITANNIA	p 7
CIRCUS MAXIMUS	p 5
DIPLOMACY	p 2
DUNE	p 3
1830 Reading var	p 10
1856	pp 12-15
JUNTA	p 9
KINGMAKER	p 4
MAHARAJA	p 6
On Deck	p 18
PUERTO RICO	p 17
SETTLERS OF CATAN	p 16
SOURCE OF THE NILE	p 19
STELLAR CONQUEST	p 19

Deadline for most games is 1800 CST 2 MAR 07



French Fried!! Germany Imperiled! Fall 1908

XVIII
2005F

CLIFFHOME: France has joined Austria in the dustbin of history and, had there been a modicum of cooperation between Germany, Russia, and Italy, England might have followed swiftly after her. As it is, it is the Kaiser who is most likely to be stateless next as the Turks and Italians control two of his three home centers and the Tsar goes scavenging for centers in the North. The Turks are two-thirds of the way to victory and could easily pick up two-thirds of the remaining third in 1909 but for the appearance of a Russian army behind their lines.

TROOP MOVEMENT

English F WAL retreats to LON. Russian A WAR retreats to LVN.

ENGLAND (Anderson): [F Eng-Irt], [F Lon-Wal], F Lpl H

FRANCE (Nichols): [F Mid-Par], A Bre-Par(r-otb);

GERMANY (Haffey): A Hol-Kie, A Bur-Ruh, A Par S A Pic-Bre, A Pic-Bre, [F Nth-Edi], [A Mun-Sil(d)], F Den-Bal;

ITALY (Copeland): [F Wal S RUS F Cly-Lpl(nso)], [F Spa(sc)-Por], [F Irt S RUS F Cly-Lpl(nso)], A Tri H, A Mar-Bur, F Ion H, [F Lyo-Spa(sc)], A Tri-Mun;

RUSSIA (R. Fisher): A Lvn-StP, F Nwy-Swe, [F Cly-Edi];

TURKEY (Shacklett): A Sil S ITA A Tri-Mun, A Ber S ITA A Tri-Mun, F Gre S F Aeg, A Boh S ITA A Tri-Mun, F Aeg S F Gre, A War-Lvn, A Vie S A Boh, A Mos S A War-Lvn, F Bla-Rum, A Bud S A Vie, A Rum-Ser.

FRE A BRE must retreat otb or to GAS, but will starve there, so why bother?

SUPPLY CENTERS:

ENG:	Edi Lon Lpl	(3) Even
FRA:	-Bre -Par	(0) Tear 1 OUT
GER:	-Ber Kie -Mun Den Hol Bel -Swe +Bre +Par	(6) Even
ITA:	Nap Rom Ven Tun Por Spa Tri Mar +Mun	(9) Build 1
RUS:	StP War Nwy +Swe	(4) Build 1
TUR:	Ank Con Smy Bul Sev Rum Gre Bud Ser Vie Mos +Ber	(12) Build 1

Orders in brackets fail: amb = ambiguous, NBR = no build received, NMR = no move received, NRR = no retreat received, nso = not so ordered, nsu = no such unit, otb = off the board, otm = on the move, r-??? = retreats somewhere.

Due next are orders for Spring 1909 and Press. Ms Nar loves Press. See website for transcript and current map.

EMBASSY BEAT

Italy to France. You might be correct when you point out to Germany that I could possibly be a Turkish ally. But considered more realistically, I am his slave. He tells me what to do and I do it or lose supply centers. Sometimes I am even rewarded.

However, I have been using this time to try to get help from others to aid me in stopping the Turk. The German would rather sack Paris while giving away Berlin. I'm trying to aid Russia. The Brit's only interest is in punishing the German or Russian, depending on what day it is. And you are quite useless since no one can ever tell what you will do on a given turn.

So, I will continue as a Turkish slave until I can rally enough strength or understanding from the Germans and Russians to attack Turkey. We will also need an agreement from you and England that you both will stop sniping at our rear areas and let us stabilize some sort of a defensive line. Failing that, the Turk wins. Are you with us or just out for yourself?

BORIS WORLD PRESS REVIEW

Warsaw Warble: The holiday atmosphere prevailing around the procession of the Sultan's daughter has reached new heights. The peasants have all turned out from their burning huts to greet the happy couple. The retreating Russian army has courteously set the huts on fire to light the way for the procession. Unfortunately, the number of well wishers has clogged the roads which will delay the much anticipated arrival at the Baltic Sea. The Sultan's daughter has requested a virtual army of engineers to rebuild the peasants homes with less flammable material.



DUNE Turns 1b-2a Nexus!



The Board:

ATREIDES (Anderson): 7T @ Arrakeen 3T @ Sihaya Ridge; 10R, 10S, KH(0/7), 5L, 1C
BENE GESSERIT (Martin): 1T @ Habbanya Ridge Sitch, Carthag, Minor Erg, Tuek's Sitch; 3S, 16R, 5L, 2C
EMPEROR (Fisher): 3*, 7T @ Minor Erg(s8); 8R, 2*R, 4S, 5L, 1C
FREMEN (Barrett): 3T @ Sitch Tabr, 7T @ Habbanya Ridge Sitch; 0S, 7R, 3*R, 5L, 2C
GUILD (K Wilson): 5T @ Tuek's Sitch, 5T @ Pasty Mesa(s8); 10R, 21S, 5L, 2C
HARKONNEN (Nichols): 9T Carthag, 3T @ Minor Erg(s8), 8R, 2S, 5L, 8C
Storm: @ Sector 16
Spice Blows: Minor Erg (8) & Sihaya Ridge (6)

TURN 1 (Cont)

1.5 Combat: (BG coexist everywhere "We're friendly witches!")

Minor Erg: E (3*, 7T) vs H (3T): H plays Cheap Hero, Ellaca Drug, no defense, 0S and dials 1.5. E plays Caid, Maula Pistol, no defense, 4S, and dials 9. Caid is killed (3S to E). E wins battle 9 to 1.5. Cheap Hero and Ellaca Drug are discarded. H 3T and E 3*, 5T go to the Tanks.

1.6 Spice Collection: A harvests 6S from Sihaya Ridge. E harvests 4S from the Minor Erg.

TURN 2

2.1 Storm: The Storm moves 5 to Sector 3.

2.2 Spice Blow: Shal-Halud appears in The Minor Erg and eats E 1T, B 1T and 4S. The Great Flat (10). We halt for a Nexus.

Due next time orders for the Nexus.

ATREIDES (Anderson): 7T @ Arrakeen 3T @ Sihaya Ridge; 10R, 16S, KH(0/7), 5L, 1C
BENE GESSERIT (Martin): 1T @ Habbanya Ridge Sitch, Carthag, Tuek's Sitch; 3S, 16R, 5L, 2C
EMPEROR (Fisher): 8R, 2*R, 4S, 4L, 1C
FREMEN (Barrett): 3T @ Sitch Tabr, 7T @ Habbanya Ridge Sitch; 0S, 7R, 3*R, 5L, 2C
GUILD (K Wilson): 5T @ Tuek's Sitch, 5T @ Pasty Mesa(s8); 10R, 21S, 5L, 2C
HARKONNEN (Nichols): 9T Carthag, 8R, 2S, 5L, 6C
Storm: @ Sector 3
Spice Blows: the Great Flat (10)
Tanks: B: 1T. E: Caid, 3*, 7T. H: 3T.

Bailey buys 1 Erie (-\$100).

Zieske buys 1 CP (-\$90).

Frueh buys 1 B&M from IO and sells 3 B&M (-\$100+270). B&M drops to G70.

Hanna passes. Bailey buys 1 Erie (Erie floats), sells 1 Erie (-\$100+100); Erie falls to B90.

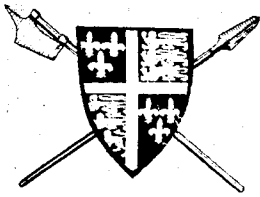
Zieske buys & sells 1CP (-\$90+90). CP floats, drops to C82.

Frueh buys 1 NYC from pool (-\$100).

Hanna, Bailey & Zieske pass. Frueh buys 1 B&O from IO (-\$100).

Hanna, Bailey & Zieske pass. Frueh buys and sells 1 share of CP (drops to D76b).

Hanna passes. Bailey buys 1 NYC from IO (-\$100).



KINGMAKER

"King of Pain"
TURNS 23-24

KOP

The Cast:

THE MAD HUNGARIANS (Dowrey): Fitzalan [30], Warden of the Northern Marches [(1)50], Stanley [50], *Le Lucas*. Event cards (1), Crown Cards (9).

THE CALIFORNIA CONNECTION (Scott): Pole [30], Chancellor of England [50]; Scrope [10], Earl of Wiltshire [30], Chancellor of Cornwall [(1)50], Swansea [(20)], Leicester [(20)]; Holland [20], Duke of York [30], Courtenay [30], Admiral of England [50], *Le Rose*. Lancaster [(20)]. Event cards (7), Crown Cards (6).

KNIGHTS OF THE PRIVY POT (Deb Anderson): Mowbray [50], Treasurer of England [50]; Hastings [10], Bishop of Carlisle [(30)], Cromwell [10], Earl of Kent [30], Constable of London [(2)50], Percy [100], Lieutenant of Ireland [(2)50], Archbishop of York [(30)], Bishop of Durham [(30)], Northampton [(20)], *Le Nicholas*. Carisbrooke, Calais, Newcastle. Event cards (3), Crown Cards (6).

THE STAFFORDSHIRE QUARTERSTAFFS (Shacklett): Stafford [30], Chamberlain of Chester [(2)50], Nottingham [(20)], Neville [50], Audley [10], Saxons [10], Roos [20], Herbert [10], Talbot [30]. Event cards (4), Crown Cards (3).

WESTERN FRONT (Martin): Howard [10], Duke of Exeter [20], Warden of the Cinque Ports [50], Archbishop of Canterbury, Bristol [(30)], Coventry [(20)], *Le Swan*; Clifford [10], Earl of Worcester [30], Captain of Calais [(3)50], Bishop of Lincoln, *Le Michael*, Flemish Crossbowmen [20]. Event cards (4), Crown Cards (1).

TURN 23 (cont):

MOVEMENT:

MH: NMR! All hold.

TCC: Pole, DoY & Scrope from Nc-Preston. Holland & Richard of York join Courtney on the two ships and sail S1-S13-S16-S20-S24.

KPP: Cromwell Blackheath-London-Barnet-St Alban's-Hn-Dauntrey-JJ. Percy & Co MJ-Tickhill-Newark-Belvoir-Leicester.

SG: Leeds-EI-DI-Cs-Cr-Cq.

WF: Clifford on the Continent. Ships *Le Swan* & *Le Trinity* w/ Howard Rye-Continent.

COMBAT: None.

CROWN CARDS: MH gets a card. TCC will get the next.

TURN 23 (Deck reshuffled due to Embassy last turn.)

EVENT CARDS:

MH: #53: Peasant Revolt. Stafford to Leeds, Kent (Cromwell) to Rochester, Marshall (n/a) to Black Heath.

TCC: #48: Peasant Revolt. Mowbray to Castle Rising, Marshal (n/a) to Thetford

KPP: Keeps a card.

SG: #118: Religious Diet. dr = 6 = All clergy to St David's. There is a King's Peace.

WF: #62: Warden (Fitzalan) to Bamburgh, Marshal (n/a) to Cheviots.

NOBLES: Audley, Herbert, Neville, Roos, Talbot @ Cq*; Bouchier in Milford Haven. Clifford, Hastings, Howard & Percy in St David's; Courtney & Holland aboard *Le Christopher* & *Le Margarete*; Cromwell in Rochester; Duke of York, Pole, Scrope in Preston; Stanley @ Nc; Fitzalan in Bamburgh; Mowbray in Castle Rising.

SHIPS: *Le Christopher*. *Le Margarete* @ S24, *Le Lucas* @ Milford Haven, *Le Michael* interned @ Carisbrooke; *Le Nicholas* @ Chichester, *Le George* @ Rye, *Le Swan* & *Le Trinity* @ Continent.

HEIRS: Reds: King Henry at St David's w/ Percy, Margaret & Edward of Wales in Beaumaris; Artie w/ Fitzalan @ Bamburgh. Whites: Richard of York in S24 Holland, George @ Leeds w/ Stafford; Pretender (20) at Qg. Richard of Gloucester, Edmund of Rutland, Edward of March (RIP).

CIRCUS MAXIMUS

Nichols (Benjos H): Congrats, Sprinticus! Interesting game. Yes, I'll try again.

Fisher (Josephis): Josephis gave a heavy sigh, "Third place again-at this rate I'll never re-bound my wheels or be able to get a better horse or two. I'll be lucky to keep my ride as it is."

Hats-off to Sprinticus, no wonder he's called Rex!

Copeland (Sprinticus Rex): WOW! What an ending. Hats off to Dave Anderson for the masterful play all the way up to the end. He harassed me on every turn and in every possible way. With my light chariot and lack of endurance I could not counterattack. Good job, Dave. When all is decided on the last turn, that is the sign of a really a great race! Many thanks to all.

Signed up for CIRCUS MAXIMUS VI: Zleske and Nichols.

--MAHARAJA (continued from next page)

LEGEND: A = Army, F = factory, _ = die roll by factory, L = leader, P = population marker, pp = population points, r-??? = retreats-???, w-??? = withdraws-???

Game transcript and map are posted on the website.

SOME SPEAK!

Anderson (Purple): I am not exactly sure when I started pulling away with the Rajputs. The only color that may be impossible to win with may be Yellow after Turn 8. And since this one turned out so lopsided in my favor. I would agree to play the Yellow faction in the next game and see if I could improve their lot or not, and it is almost decided for yellow on the invasion dice rolls on the first 2 turns of the game. They need to spread west and SOUTH as quickly as possible. The Yellow player here did not do that.

Barrett (Yellow): Good fun but I thought it was the Phalanx game Maharaja - well played all.

Boldue (GM): First off, incredible thanks to Paul Barrett for making the cyberboard we've been using. Well, I'll differ a trifle with the "well played all". Granted this was everyone's first pbem MAHA game, but going over the transcript, I find a few "bonehead" plays.

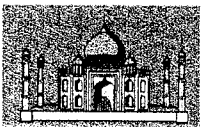
First was the Harrapans not heading for the hills in Turn 2 and thus being eliminated. Extinct nations don't score points. 'Nuff said.

Second was the GM running the Guptas in the same turn order as the Mauryans.

Third was the Sinhalese abandoning Ceylon around Turn 6, thus handing Purple an easy 6 VP and jeopardizing their own submission criterion.

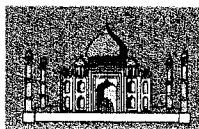
Fourth was the failure of the early Colonials to establish factories in Malabar or Golconda, thereby scoring an extra VP.

Fifth was the general lack of interest in attacking Purple assets late in the game when it was obvious Purple was winning. Granted, the Sikhs and Rajputs usually could immediately submit, and the Brits going last could take back most losses, but why were they able to score so many empty territories?



MAHARAJA

Turn 16
Purple Rules!



THE CAST:

Rudy Zodda: Green
Paul Barrett: Yellow

Dave Anderson: Purple
Wayne Morrison: Blue

TURN 16 (concluded)

BOARD:

Pandyas (2.5): 1A @ Golconda.

Marathas (0.5): 2A @ Bijapur; 1A.Arms @ Maharashtra, 1A @ Gujarat, Orissa.

Sinhalese (1.5): 2A @ Sinhala.

Sikhs (0): 1A @ Kashmir, Ladakh.

Rajputs (0): 2A @ Rajputana; 1A @ Andhara, Assam, Delhi.

Muslims (2): 1A @ Berar, Bidar

Mughals (0): 3A.Arms @ Agra; 2A @ Magadha; 1A @ Baluchistan, Bihar, Bundelkhand, Gandhara, Jaunpur, Lahore, Oudh, Malwa, Punjab, Sind.

Portuguese: 2A @ Khandesh; 1F @ Gujarat, Sind

Dutch: 1A @ Indian O.

French: 2A @ Malabar; F @ Lanka, Malabar.

British: Clive, 2A @ Mysore; 2A @ Indian O; 1A @ Karnatak, Kerala; F @ Kerala, Karnatak.
Allied: Rajputs (A).

Score: Purple 84, Blue 62, Yellow 58, Green 56.

Mughals (0): Grow 0 pp. 1A Magadha-Gondwana; 1A.Arms Agra-Malwa-Gujarat (6+1, 1:5 -1 Maratha, 1 Mughal); 2A Agra-Delhi (Rajputs submit, Mughals w-Agra). Score 2 Raj VP.

Portuguese: 2A Khandesh-Berar (4+1, 3+1; 6+1, 4+1:2 -1 Muslim). +2 VP.

Dutch: 1A Indian O-Lanka (6+1:5; -1 French F). Build F in Lanka.

French: Hold.

British: Clive retires. **1st Wave:** 2A Indian O-Arabian-Gujarat (-Arms, 1+1, 1+1:2; 3+1, 2+1:3; 6+1, 1+1:5 -F), 2A Mysore to Golconda (2+1, 2+1:6; 5+1:5 -1 Brit, -1 Pandya), 1A Karnatak-Indian O-BoB, 1A Kerala-Indian O-BoB. Build F @ Golconda & Gujarat. Pandyas extinct. **2nd Wave:** 2A Gujarat-Rajputana-Agra (2+1, 1+1:5, 1; 6+1, 1+1:6, 3; 3+1:3; 6+1:5 -1 Brit, 2 Mughals), 1A Golconda-Bijapur (4+1:5, 3 Brits r-Golconda), 1A BoB-Orissa (2+1:1; 6+1:2 -Maratha), 1A BoB-Bengal-Magadha (3+1:6 -Brit). Build F in Orissa. Score 2 Raj VP.

Turn 16 VP:

Yellow: Sinhalese (2) + Dutch (2)

Blue: Marathas (5) + Muslims (1) + French (3)

Green: Mughals (15) + Portuguese (2)

Purple: Sikhs (2) + Rajputs (3) + Brits (8)

Final Score: Purple 99, Green 77, Blue 71, Yellow 62. Purple wins!

BOARD:

Marathas (0.5): 2A @ Bijapur; 1A.Arms @ Maharashtra.

Sinhalese (1.5): 2A @ Sinhala.

Sikhs (0): 1A @ Kashmir, Ladakh.

Rajputs (0): 2A @ Rajputana; 1A @ Andhara, Assam, Delhi.

Muslims (2): 1A @ Bidar

Mughals (0): 1A @ Baluchistan, Bihar, Bundelkhand, Gandhara, Gondwana, Jaunpur, Lahore, Oudh, Magadha, Malwa, Punjab, Sind.

Portuguese: 2A @ Berar; 1F @ Sind

Dutch: 1A.F @ Lanka.

French: 2A.F @ Malabar.

British: 1A @ Agra, Golconda, Orissa; F @ Golconda, Gujarat, Kerala, Karnatak, Orissa.

Allied: Rajputs (A).

--continued on previous page



BRITANNIA "Frisian" Turn XV



The Cast: Nations in Italics are extinct, in parentheses are not yet in play.

A (Hanna): *Romans, R-Bs, Norsemen, (Norwegians)*

B (Anderson): *Welsh, Jutes, (Normans)*

C (Butitta): *Brigantes, Caledonians, Danes*

D (Boyum): *Picts, Irish, Angles*

E (Frueh): *Belgae, Scots, Saxons, Dubliners*

Board:

Welsh (B, 0.5): 1A @ Avalon, Clwyd, Devon, Downlands, Dyfed, Gwent, Powys.

Brigantes (C, 1.5): 2A @ Galloway, Strathclyde; 1A @ Lothian.

Picts (D, 2.5): 2A @ Alban, Mar, Moray.

Caledonians (C, 2): 2A @ Caithness.

Norsemen (A, 2.5): 4A @ Skye; 1A @ Dalriada, Orkneys.

Dubliners (E): 3A @ Cheshire; 2A @ Hwicce; 1A @ Bernicia, Cumbria.

Saxons (E, 0): 2A @ Wessex; 1A @ Essex, Kent, Lindsey, March, N Mercia, Norfolk, Suffolk, Sussex, York.

Angles (D, 2.5): 3A @ Pennines; 2A @ Dunedin.

Angles (2.5): Grow 1.5 pp. **NMR!** GM adds 1A @ Pennines. Hold. GM removes 2A Pennines due to overstacking.

Score: £(86.5), £(69.5), £(58), £(55), £(42)

Turn XV

The Saxons are King (4 VP) and receive 1A @ S Mercia.

Board:

Welsh (B, 0.5): 1A @ Avalon, Clwyd, Devon, Downlands, Dyfed, Gwent, Powys.

Brigantes (C, 1.5): 2A @ Galloway, Strathclyde; 1A @ Lothian.

Picts (D, 2.5): 2A @ Alban, Mar, Moray.

Caledonians (C, 2): 2A @ Caithness.

Norsemen (A, 2.5): 4A @ Skye; 1A @ Dalriada, Orkneys.

Dubliners (E): 3A @ Cheshire; 2A @ Hwicce; 1A @ Bernicia, Cumbria.

Saxons (E, 0): 2A @ S Mercia, Wessex; 1A @ Essex, Kent, Lindsey, March, N Mercia, Norfolk, Suffolk, Sussex, York.

Angles (D, 0.5): 2A @ Pennines; 2A @ Dunedin.

Score: £(90.5), £(69.5), £(58), £(55), £(42)

Welsh (B, 0.5): Grow 5 pp. Add 1A @ ...

In light of the NMR, the lack of any standby player, and Frueh's 30+ VP lead, the GM calls for a concession vote to Frueh's "E" faction. I know, the most interesting two turns are the last, but this game has dragged on far too long. A "nay" vote from any of the players will veto the concession.

Legend: A = infantry army, C = cavalry army, F = fort, L = legion or leader, pp = population point, R = raider, r-??? = retreats to ???, w-??? = withdraws to ???, (*) = in melee, _#_ = attack by/against cav/legion

Game transcript and current map can found on the website.



BLACKBEARD

Turns 127-131



THE CAST:

1. (Barrett) Tew, Sloop
2. (Zodda) Davis, Sloop
3. (Bargender) Taylor, Sloop
4. (Martin) Rackham, Schooner.

STATUS:

#	Captain	Ship	Hex	Spd	Cbt	Not	Cun	Unr	NW	H1	H2	Hostage	Attk
2	Davis	Sloop	AA21	+3	6	14	5	2	674	--	--	--	NP
4	Rackham	Senr	1101	+3	5	0	2	7	0	--	--	--	--
4	Rhett	KC	O16	5	13								
3	Taylor	Sloop	M14	+3	6	3	3	4	0	45	300	2(14,15)	S
2	Maynard	KC	Box1	4	14								
3	Herdman	KC	DD18	3	15								
2	Matthews	KC	Box1	2	16								
2	Rogers	KC	Box1	2	16								
1	Tew	Sloop	J23	+3	4	2	2	7	0	10	--	--	S

The Board:

Guv's: Pro: 35, 46, 53, 31, 41
 Merchants: 52, 36, 12, 33
 Warships: B9-4 @ J24
 Out-of-Play Pirates: Teach (#3), Portugese (#1)

Anti: 23, 24, 54, 64
 Destroyed Port: 14, 32
 Letters of Marque: PFB

Turn	Player	Action	Draw
127	4	JR moves 5+3 H101-H171. Search = no remove even Merchants, add one @ 53	14, 62 53, 36
128	3	JT moves 3+3 M14-O19	23
129	1	TT moves 6+3 J23-S21	42
130	3	JT moves 1+3 O19-O20-N20-N21-M22	56
131	4	JR moves +3 H171-C201-C231. Search = no	26, 32
132	2		

STATUS:

#	Captain	Ship	Hex	Spd	Cbt	Not	Cun	Unr	NW	H1	H2	Hostage	Attk
2	Davis	Sloop	AA21	+3	6	14	5	2	674	--	--	--	NP
4	Rackham	Senr	H171	+3	5	0	2	7	0	--	--	--	--
4	Rhett	KC	O16	5	13								
3	Taylor	Sloop	M22	+3	6	3	3	4	0	45	300	2(14,15)	S
2	Maynard	KC	Box1	4	14								
3	Herdman	KC	DD18	3	15								
2	Matthews	KC	Box1	2	16								
2	Rogers	KC	Box1	2	16								
1	Tew	Sloop	S21	+3	4	2	2	7	0	10	--	--	S

The Board:

Guv's: Pro: 35, 46, 53, 31, 41
 Merchants: 33, 53
 Warships: B9-4 @ J24
 Out-of-Play Pirates: Teach (#3), Portugese (#1)

Anti: 23, 24, 54, 64
 Destroyed Port: 14, 32
 Letters of Marque: PFB



JUNTA
 Budget Passes!
 Years 10-11



THE CAST: (and Table order)

Rick Copeland (Martini)
 Chuck Hanna (Shades)
 Wayne Morrison (Mustache)

Dave Anderson (Hat)
 John Butitta (Stickpin)

Year 10:

STATUS: There was a Coup. The Bank is safe.

Hat: *El Presidente* (1v), Conservatives (8v), Radicals (3v), Christian Dems (5v), Students (3v), 2C, 5S
 Shades: Admiralty (1v), 2C.

Stickpin: AF (1v), 2nd Brd CO (1v), University Faculty (3v), Socialists (5v), 4C, 3S
 Mustache: 3rd Brd CO (1v), 1S, 1C.

Martini: Minister (1v), 1st Brd CO (1v); The Church (10v), 5C, 6S

10.1: CARD DRAW: All draw two cards. Hat discards Peasant Uprising. Shades passes. Stickpin plays Secret Political Donation (___ MB) and Annual Street Festival (Coup Excuse). Mustache passes. Martini plays Peasants (3v) and discards "Students Protest" and "Students Circulate Petition".

10.2: CABINET ASSIGNMENTS: None.

10.3: BUDGET: is ... Hat proposes proposes "Prosperity for All". Hat proposes 6 MP to himself to fix the Palace. Martini family gets 4 MP to keep the votes coming. Shades my favorite Army commander 5 MP. Mustache family gets 3 MP for being patient. Stickpin only gets 2 MP for getting money from foreign powers and for playing a Coup Excuse which is not healthy for *El Presidente's* health. The *El Presidente* casts 20 votes "Si", as in the song: "All say can you Si by the dawns early light...." Carlos III casts 1 vote "Si." Stickpin casts 10 votes "No". Mustache casts 1 vote "Si". Martini casts 12 votes "Si". There are no further votes cast in second round. Shades, Martini & Hat get 2 bills. Mustache and Stickpin get 1 bill.

10.4: LOCATIONS: Hat is at work. Shades, Stickpin & Mustache are at the Bank. Martini is at home.

Where is Stickpin? Where is Stickpin?
 Here I am. Here I am.
 Ready to get demoted. Ready to get demoted.
 Come and play. Come and play.
 Sorry. I could not resist. -- Dave El Corruptornotto

10.5: ASSASSINATIONS: None.

10.6: BANKING: Stickpin, Shades, and Mustache make deposits.

The Stickpin family was duped into supporting a Capitalist lackey. He shows his true colors, first by impoverishing two families and trying to buy the Stickpins. Then he punishes the Stickpins and tries to buy off the other families. How long can we put up with this criminal behavior. Our old *El Presidente* was a man of much honor - we should bring his family back to power to restore the legal rule. How long can you accept to these outrages??? The people demand justice! -- Juan Stickpin

The Hat family reminds the Stickpin family that the Stickpin family did not support the Hat family to power, but when it came to it. The Stickpin family greedily voted for themselves to be *El Presidente*. *El Presidente* gave the Stickpin much power and honor. We are shocked by their turning. We see th Admiralty in Stickpin's future.

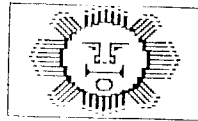
If the Stickpin family thinks he can do a better job than the best *El Presidente* ever I will resign and support the Stickpin family as the next *El Presidente* as long as I am appointed Minister. Deal or No Deal? -- Dave El Corruptornotto.

10.7: COUP: There is an excuse. Hat can't start a coup. Shades declines. Stickpin rants, but hasn't pushed any troops yet. Mustache ... Martini ...



1830-READING

SR 1-SR 6



PLAYER STATUS:

Bailey: \$600
Zieske: \$600
Frueh: \$600
Hanna: \$600

SR 1

Bailey bids 165 for C&A.
Zieske bids 170 for C&A.
Frueh bids 75 for D&H.
Hanna bids 175 for C&A.
Bailey bids 80 for the D&H.
Zieske bids 45 for the C&SL.
Frueh bids 115 for M&H.
Hanna buys SVN&RRCo (-\$20).

Zieske gets C&SL for \$45 (-\$45).

D&H auction:

Frueh bids 85, Bailey bids 90, Frueh folds. Bailey gets D&H for \$90.

Frueh gets M&H for \$115 (-\$115).

C&A auction:

Bailey bids 180, Zieske bids 185, Hanna bids 190, Bailey bids 195, Zieske bids 200, Hanna bids 205, Bailey bids 210, Zieske drops, Hanna bids 215, Bailey bids 220, Hanna bids 225, Bailey folds. Hanna gets C&A (-\$225) and takes 1 share of PA.

Bailey passes. Zieske buys B&O (-\$220), sets par at \$100.

Frueh buys presidency of NYNH&H, \$76 par (-\$152).

Hanna buys presidency of PA, \$71 par (-\$142).

Bailey buys presidency of C&O, \$82 par (-\$164).

Zieske passes. Frueh buys 1 NYNH&H (-\$76).

Hanna buys 1 PA (-\$71).

Bailey buys 1 C&O (-\$82).

Zieske passes. Frueh buys 1 NYNH&H (-\$76).

Hanna buys 1 PA (-\$71).

Bailey buys 1 C&O (-\$82).

Zieske passes. Frueh buys 1 NYNH&H (-\$76).

Hanna buys 1 PA. PA floats! (-\$71)

Bailey buys 1 C&O (-\$82).

Zieske passes. Frueh buys 1 NYNH&H. NYNH&H floats! (-\$76)

Hanna passes. Bailey buys 1 C&O. C&O floats! (-\$82)

All pass. Zieske has the Priority.

OR 1: Private companies pay: MF+\$20, CH+\$30, CB+\$15, PZ+\$40

Corp	Title Lay	Token	Earn	Dv?	Trains	Price	Notes
C&O	#8(w)/G5	F6	--	N	+2	C76	-\$80 for 2-train
NYNH&H	#1(e)/F20(e)	G19N	--	N	+2+2	D71	-\$160 for two 2-trains
PA	#57(e)/H16	H12/H16	--	N	+2+2	F67	-\$160 two 2-trains, -\$40 token

SR 2

Zieske buys 1 NYNH&H (-\$76).

Frueh, Hanna, and Bailey pass. Zieske buys 1 NYNH&H (-\$76).

Frueh, Hanna, and Bailey pass. Zieske buys 1 NYNH&H (-\$76).

Frueh, Hanna, and Bailey pass. Zieske buys 1 NYNH&H (-\$76). NYNH&H sold out!

Frueh, Hanna, and Bailey pass. Zieske buys 1 PA (-\$71).

All pass. Frueh has Priority. NYNH&H sold out, so price to C76b.

OR 2: Private companies pay: MF+\$20, CH+\$30, CB+\$15, PZ+\$40

Corp	Title Lay	Token	Earn	Dv?	Trains	Price	Notes
C&O	#8(nw)/G3	--	70	Y	2	C82a	
NYNH&H	#57(e)/F22	F22	80	Y	22	C82b	-\$80 for tile, -\$40 for token
PA	#57(e)/H10	H10	60	Y	22	E71	-\$100 for token

SR 3:

Frueh & Hanna buy 1 C&O (-\$82 each).

Bailey & Zieske buy 1 PA (-\$71 each).

All pass. Frueh retains the priority. NYNH&H sold out, so rises to B90.

OR 3: Private companies pay: CB+\$15, MF+\$20, CH+\$30, PZ+\$40

Corp	Title Lay	Token	Earn	Dv?	Trains	Price	Notes
NYNH&H	#8(ne)/C23	--	80	Y	22--	B100	
C&O	#69(se)/G7	--	70	Y	2+2+3	C90	a)
PA	#59(w)/H18	--	100	Y	22	E76	\$360 to CH for C&A and SVNRR

a) -\$260 for 2- & 3-train. PHASE CHANGE

SR 4

Frueh buys PA (-\$71).

Hanna sells 1 C&O, 1 PA, and buys NYC Prez @ \$100 par (+\$90+76-200). C&O to D82, PA to F71.

Bailey passes. Zieske sells 4 NYNH&H and 2 PA, buys B&M Prez @ \$100 par (+\$400+142-200), NYNH&H to F71, PA to G67.

Frueh passes. Hanna buys 1 NYC (-\$100).

Bailey buys 1 NYNH&H (-\$71).

Zieske buys 1 B&M (-\$100).

Frueh passes. Hanna buys 1 NYC (-\$100).

Bailey passes. Zieske buys 1 B&M (-\$100).

Frueh passes. Hanna buys 1 NYC (-\$100).

Bailey passes. Zieske buys 1 B&M (-\$100).

Frueh passes. Hanna buys 1 NYC (-\$100). NYC floats!

Bailey passes. Zieske buys 1 B&M (-\$100). B&M floats!

Frueh, Hanna & Bailey pass. Zieske sells 1 B&M, buys 1 C&O (+\$100-82). B&M to B90.

All pass. Frueh has the Priority.

OR 4a: Private companies pay: CB+\$15, MF+\$20, PA+\$30, PZ+\$40

Corp	Title Lay	Token	Earn	Dv?	Trains	Price	Notes
NYC	#57(sw)/E19E19	--	N	+3	A90		-\$180 for 3-train
B&M	#15(w)/F22	E23/F22--	N	+3+3	B82		-\$400 for two 3-trains & token
C&O	#57(e)/F16	F16	\$110	Y	223	D90	\$140 to CB for D&H, use it-\$120
NYNH&H	#53A(se)/E23--	--	\$90	Y	22+3	F75	-\$180 for 3-train
PA	#14(se)/H16	--	\$120	N	22	H67	

OR 4b: Private companies pay: C&O+\$15, MF+\$20, PA+\$30, PZ+\$40

Corp	Title Lay	Token	Earn	Dv?	Trains	Price	Notes
C&O	#8(nw)/H8	--	\$130	Y	223	D100	
NYC	#8(w)/F18	--	\$40	Y	-3+4+4	A100	-\$600 for two 4-trains, 2s fade
B&M	#54(e)/E19	--	\$190	Y	33+4	B90	a)
NYNH&H	#25(w)/E19	--	\$240	Y	(22)3+4	F80	-\$300 for 4-train
PA	#56(se)/G17	--	\$120	N	(22)3+4H60y		-\$350 for 3- & 4-train from NYC

a) -\$80 for tile, \$80 to PZ for C&SL, -\$300 for 4-train

SR 5

Frueh buys C&O from IO; sells 2 C&O and 1 PA (-\$82+200+60). C&O to F80b, PA to I50y

Hanna buys 1 PA (-\$50).

Bailey buys 1 pool B&M (-\$90).

Zieske sells 1 C&O and buys 1 B&O (+\$80-100).

Frueh converts MH private for share of NYC.

Hanna passes. Bailey buys pool NYNH&H (-\$80).

Zieske buys 1 B&O (-\$100).

Frueh sells NYC and buys Reading Presidency, sets par @ \$90/share (+\$100-270). NYC to B90.

Hanna passes. Bailey buys pool NYNH&H (-\$80).

Zieske buys 1 B&O (-\$100).

Frueh buys 1 Reading (-\$90).

Hanna passes. Bailey buys pool NYNH&H (-\$80); NYNH&H sold out

Zieske buys B&O (-\$100); B&O floats!

Frueh buys 1 Reading (-\$90).

Hanna, Bailey, & Zieske pass. Frueh buys 1 Reading (-\$90); Reading Floats!

Hanna passes. Bailey sells 4 NYNH&H (price unchanged); buys 1 Reading (+\$320-90).

Zieske sells 1 B&O and buys 1 B&M (+\$100-100). B&O to B90.

Frueh sells 1 Reading and buys 1 B&M (+\$90-100); Reading to C82.

Hanna passes. Bailey sells 1 Reading (Reading to D76) and buys 1 pool B&O (+\$82-90).

Zieske, Frueh & Hanna pass. Bailey buys 1 PA (-\$50).

Zieske, Frueh & Hanna pass. Bailey buys 1 PA (-\$50).
 Zieske, Frueh & Hanna pass. Bailey buys 1 PA (-\$50); PA sold out!
 Zieske & Frueh pass. Hanna sells 1 NYC and buys B&M (+\$90-100).
 All pass. Bailey has the Priority. PA is sold out so rises to H60y.

OR 5a: Private companies pay B&M \$10, C&O \$15, PRR & PZ \$30

Corp	Title Lay	Token	Earn	Dv? Trains	Price	Notes
B&M	#7(e)/E21	--	\$290	Y -334	B100	- \$120 for tile using C&SL
	#58(nw)/B20	--				a)
B&O	#9(w)/I17	I15	--	N +3	C82	
NYC	#15(w)/F16	F16	\$90	Y 4+3	C90	- \$281 for 3-trn from PA, - \$40tkn
NYNH&H	#29(e)/E21	--	\$230	Y 34	E90a	
C&O	#14(sw)/H10H16	--	\$260	Y (22)3	E90b	- \$40 for token
Reading	#23(w)/H8	H14/H10--	--	N +4+5	D71	- \$40 token, - \$750 trains *
PA	#65(ne)/H18	--	\$150	N -34+5	H50y	- \$450 for 5-train

a) - \$80 for tile, - \$1 to B&M for 3-train, B&Opc closes

* **PHASE CHANGE:** Privates die, Brown tiles available, two train limit

OR 5b:

Corp	Title Lay	Token	Earn	Dv? Trains	Price	Notes
B&M	#61A(ne)/E23--	--	\$280	Y 34	B112	
NYNH&H	#45(ne)/F18	--	\$280	Y 34	E100a	
C&O	#63(e)/H16	--	\$120	Y 3	E100b	
NYC	#62(se)/G19	--	\$240	Y 43	C100	
B&O	#53A(w)/I15	H18E	\$140	Y 3	C90	- \$40 token, - \$450 for 5-train
Reading	#63(w)/H10	--	\$240	Y 45	D76	
PA	#61A(sw)/I15	--	\$420	N 45	H40o	

PLAYER STATUS:

Bailey: \$391, 6* C&O, 4 PA, 1 B&M, 1 B&O (7+4)

Zieske: \$460, 5* B&O, 6* B&M, (10) <PRIORITY>

Frueh: \$512, 6* NYNH&H, 5* Read, 1 B&M, (9)

Hanna: \$316, 6* PA 5* NYC, 1 B&M (5+5)

CORPORATION STATUS

Corp	Prez	Price	Par	IO	Pool	Cash	Trains	Tokens
B&M	PZ	B112	100	1	0	\$50	34	E23, F22
NYNH&HMF		E100a	--	0	4	\$295	34	G19N, F22
C&O	CB	E100b	--	0	4	\$118	3-	F6, F16, H16
NYC	CH	C100	100	4	0	\$315	34	E19, 3
B&O	PZ	C90	100	4	0	\$429	35	I15, H18E, 2
Reading MF		D76	90	3	2	\$158	45	H14, H10
PA	CH	H40o	--	0	0	\$431	45	H12, H16, H10, 1

The Bank has \$16,525.

Available Trains: 666 DDDDDD

Available Tiles:

Yellow: 2(1), 3(2), 4(2), 7(4), 8(5), 9(6), 55(1), 57(3), 58(1)

Green: 14(2), 15(1), 16(1), 18(1), 19(1), 20(1), 23(3), 24(3), 25(1), 26(1), 27(1), 28(1), 29(0), 59(2)

Brown: 39(1), 40(1), 41(2), 42(2), 43(2), 44(1), 45(1), 46(2), 47(1), 61A(1), 63(1), 64(1), 66(1), 67(1), 68(1), 70(1)

SR 6

Bailey sells 1 B&M (price to C100) and 1 C&O, buys Prez share of Erie for \$200 (+\$112+100-200).

Zieske sells 1 B&M (price to D90), buys Prez cert of CP for \$180 (+\$100-180).

Frueh & Hanna buy 1 pool Reading (-\$76 each).

Bailey buys 1 Erie (-\$100).

Zieske buys 1 CP (-\$90).

Frueh buys 1 B&M from pool (-\$90).

Hanna buys 1 NYC from IO (-\$100).

Bailey buys 1 Erie (-\$100).

Zieske buys 1 CP (-\$90).

Frueh buys 1 B&M from pool (-\$90).

Hanna sells 1 NYC, buys 1 B&O (+\$100-100). NYC to D90.

--1830 (continued from p 12)

--continued on p 3

1856

"HIS SILVER CUP"
SR 7B-OR 8A



SR 7 (concluded)

Bailey passes. Frueh sells 1 WR and buys CP (\$45-80). WR drops to K40r

Hanna and Butcher pass. Zieske buys 1 WR (-\$40) WR sold out again.

Bailey, Frueh, Hanna and Butcher pass. Zieske buys 1 WGB (-\$70).

Bailey, Frueh, Hanna and Butcher pass. Zieske buys 1 WGB (-\$70).

Bailey, Frueh, Hanna and Butcher pass. Zieske buys 1 THB (-\$65).

All pass; Bailey has priority. LPS, WGB, GW, and WR sold out; prices rise to D125, D80, J45ya, and J45yb, respectively.

PLAYER STATUS (Cert Limit is 13):

Zieske: \$330, 6*BBG, 6*THB, 3 WGB, 3 WR, 4 GW (13+7)

Bailey: \$451, 6* CA, 6* WGB, 4* CV (13)

Frueh: \$ 70, 6*LPS, 6*TGB, 1 WR, 1 CPR (11+1)

Hanna: \$ 19, 6* GW, 6* CPR, 4 LPS, 2 GT, 1 WGB (12+5)

Butcher: \$ 26, 5* GT, 6* WR (4+5)

CORPORATION STATUS

Corp	Prez	Price	Par	IO	Pool	Loans	Escrow	Cash	Trains	Tokens
CA	CB	E125	--	0	4	0	--	\$10	34	D17, F15, 1, Port @ F17
LPS MF		D125	--	0	0	1	--	\$10 35	C14, 1, Tun	
GT	TB	F90	--	0	3	0	\$450	\$87	34	P9, N11E, 2
CV	CB	F80	90	2	4	0	--	\$50	4-	N11W, L13, I12N
CP	CH	E80	--	0	3	0	--	\$650	45	M4, 3, Br
WGB	CB	D80	--	0	0	0	--	\$410	5-	J11, L13
TGB	MF	E70	100	3	1	0	--	\$1000	--	(K8), 1
BBG	PZ	F65a	100	2	2	0	--	\$1000	--	(J15), 2
THB	PZ	F65b	100	3	1	0	--	\$1000	--	(L15), 2
GW	CH	J45ya	--	0	0	9	--	\$0	33	F15, C14, 2, Br
WR	TB	J45yb	--	0	0	0	--	\$650	--	(O16), 2

OR 7a

Corp	Title Lay	Token	Earn	Dv? Loans	Trains	Price	Notes
CA	#24(ne)/C18	--	\$370	Y 0	(34)	D150a	
LPS	#42(se)/E16	--	\$160	Y 1(-\$10)	(3)5	D150b	
GT	--/--	--	\$160	Y 0	(3)-4	E100	
CV	#125(ne)/L13--	--	\$200	Y 0	4(+3)	F90	- \$129 for 3-train from CA
CP	#121(s)/M4	N11	\$290	Y 0	45	E90	- \$40 for token
WGB	#15(nw)/J11	--	\$230	N 0	5	D70	
TGB	#5(se)/K8	K8	\$0	N 1(+\$90)	+3	E65	- \$1090 for 3-train from LPS
BBG	#6(ne)/J15	J15/J13S0	\$0	N 0	+6	F60	a & b)
THB	#59(nw)/L15	L15N	\$0	N x	+6	F60b	- \$40 tile, - \$700 for 6-train
WR	--/--	(O16)	\$0	N x	+4	J40r	- \$650 for 4-train from GT

a) - \$40 for token, - \$700 for 6-train -- PHASE CHANGE: see b)

b) 3-trains scrapped, Port token retired, CGR formed from GW & TGB (LPS pays off loan - \$110) with MF Pres, price A100, 3 tokens placed, and a borrowed 8-train. Cert limit 16.

OR 7b

Corp	Title Lay	Token	Earn	Dv? Trains	Price	Notes
CA	#47(se)/D15	--	\$190	Y (4)+5	D175a	- \$361 for 5-train from WGB
LPS	#15(ne)/E18	--	\$240	Y 5	D175b	
GT	#8(s)/N9	--	--	N (+4)+8	E90	a)
CGR	#15(sw)/B19--	--	\$360	N "8"	A100	Borrows 8-train
CV	#63(s)/J11	--	--	N -4+8	F80	b)
CP	#14(se)/M10--	--	\$210	Y -45	E100	
WGB	#63(s)/J13	--	--	N -5+8	D65	- \$1000 for 8-train
BBG	#17(nw)/K14	I12	\$170	Y 6	F65	
THB	#64(sw)/L15	--	\$110	N 6	F55	
WR	#6(sw)/O16	O16	--	N +8	J35r	- \$1000 for 8-train

a) - \$1 to WR for 4-train, buy 8-train for \$650 & 4-train, 4-trains scrapped.

b) Buy 8-train using \$1 from CV, \$817 from CB after sale of 1 CA and 1 CV (\$175+90)

OR 7c

Corp	Title Lay	Token	Earn	Dv?	Trains	Price	Notes
CA	#16(se)/C16	--	\$240	Y	5	D200	
LPS	#3(se)/D19	--	\$240	N	5	D150	
CP	#124(s)/N11 M10		\$230	Y	5	E110	-\$1000 for 8-train
CGR	#4(se)/L9	--	\$360	N	"8"	A100	-\$100 for token
GT	--/--	--	--	N	+8	E80	GT makes destination (+\$450)
CV	#24(sw)/M12--		\$390	Y	8	F90	-\$1 for 8-train from WR
WGB	#58(s)/J9	--	--	N	8	D65	
BBG	#15(s)/I12	I12	\$230	Y	6	F65	
THB	#15(ne)/J15 J15		\$110	N	6	F55	
WR	#6(se)/O16	--	--	N	x	Closed	a)

a) Attempting to buy an 8-train from Bank, TB sells 3 WR, sending WR into closure.

PLAYER STATUS (Cert Limit is 16):

Zieske: \$632, 6* BBG, 6* THB, 3 WGB, 2 CGR (10+5)
 Bailey: \$554, 5* CA, 6* WGB, 3* CV (11) <Priority>
 Frueh: \$482, 6*LPS, 3*CGR, 1 CPR (8)
 Hanna: \$814, 3 CGR, 6* CPR, 4 LPS, 2 GT, 1 WGB (15)
 Butcher: \$271, 5* GT (4)

CORPORATION STATUS

Corp	Prez	Price	Par IO	PoolCash	Trains	Tokens
CA	CB	D200	-- 0	5 \$122	58	D17, F15, 1
LPS MF	D150	-- 0 0	\$230	58	C14, 1, Tun	
CP	CH	E110	-- 0 3	\$729	5-	M4, M10, N11, 1, Br
CGR	MF	A100	-- 2 0	\$785	"8"	K8, F15, C14, 7, Br
CV	CB	F90	90 2 5	\$195	8-	N11, L13, I12N
GT	TB	E80	-- 0 3	\$629	8-	P9, N11, 2
BBG	PZ	F70	100 2 2	\$240	6-	J15, J13, I12
WGB	CB	D70	-- 0 0	\$1	8-	J11, L13
THB	PZ	F50y	100 3 1	\$580	6-	L15, J15, 1

Bank has \$6,190.

Available Trains: 888

Available Tiles:

Yellow: 1(1), 2(1), 3(2), 4(0), 5(1), 6(1), 7(6), 8(8), 9(10), 55(1), 56(1), 57(3), 58(2), 69(1)
 Green: 14(3), 16(0), 17(0), 18(1), 19(1), 20(1), 23(4), 24(2), 25(1), 26(1), 27(1), 28(1), 29(0), 59(2)
 Brown: 39(1), 40(1), 41(3), 42(2), 43(2), 44(1), 45(2), 46(2), 47(1), 65(1), 67(1), 68(1), 70(1), #127(1)
 Grey: 123(1)

SR 8

Bailey buys pool THB (-\$50).
 Frueh buys CGR (-\$100).
 Hanna sells 2 GT, buys pool CV (+\$160-90). GT drops to G70.
 Butcher buys 1 CV from pool (-\$90).
 Zieske buys 1 CV from pool (-\$90).
 Bailey buys 1 CA (-\$200).
 Frueh buys 1 CGR (-\$100). CGR sold-out!
 Hanna buys 1 CA (-\$200).
 Butcher buys 1 GT (-\$70).
 Zieske buys 1 CV from pool (-\$90).
 Bailey buys 1 BBG from pool (\$70).
 Frueh buys 1 GT (-\$70).
 Hanna buys 1 THB (-\$100).
 Butcher buys 1 BBG from pool (-\$70).
 Zieske & Bailey buy 1 CP (-\$110 each).
 Frueh buys 1 GT (-\$70).
 Hanna buys 1 THB (-\$100).
 Butcher passes. Zieske buys 1 CA (-\$200).
 Bailey buys 1 GT (-\$70).
 Frueh buys 1 THB from IO (-\$100). THB sold-out!
 Hanna & Butcher pass. Zieske buys 1 GT (-\$70). GT sold out!
 Bailey sells 1 GT, 1 CP and 1 BBG (BBG to G65); buy IO CV (+\$70+110+70-90).

Frueh sell 1 CP and buys 1 GT (+\$110-70). GT is sold-out!
 Hanna, Butcher & Zieske pass. Bailey buys IO CV (-\$90).
 Frueh buys 1 BBG from pool (-\$65).
 Hanna, Butcher & Zieske pass. Bailey buys IO CV (-\$90). Bailey buys CV (-\$90). CV sold out
 All pass. Frueh has priority. LPS, CV, GT, WGB, THB all sold out, move up one row.

OR 8a

Corp	Title Lay	Token	Earn	Dv?	Trains	Price	Notes
CA	#70(ne)/C20	--	\$240	Y	5	C225	
LPS	#5(ne)/D19	--	\$560	Y	5	C200	
CP	#14(ne)/K8 J13		\$260	Y	5	E125	-\$100 for token
CV	#8(s)/J9	--	\$350	Y	8	E110	
CGR	#9(se)/L9	--	\$370	N	("8")+8	A100	-\$1000 for 8-train, -\$50 Tunnel
GT	#57(s)/M6	M4	\$340	Y	8	F80	-\$100 for token
WGB	#7(s)/I10	--	\$340	Y	8	C80	
BBG	#8(sw)/K10	--	\$260	Y	6	G70	-\$40 for tile
THB	#8(ne)/M12	--	\$250	Y	6	E60	

OR 8b

Corp	Title Lay	Token	Earn	Dv?	Trains	Price	Notes
CA	#29(n)/B15	--	\$260	Y	5	C250	-\$50 for Tun
LPS	#23(ne)/G16 H15		\$560	Y	5	C225	-\$40 for token
CP	#9(se)/L11	--	\$280	Y	5	D150	
CV	#9(se)/K12	--	\$390	Y	8	E125	-\$40 for tile
CGR	#41(ne)/K12 H15		\$370	Y	8	A110	-\$100 for token
GT	#14(?) /N3	--	\$370	Y	8	F90	
WGB	#24(se)/O8	--	\$380	Y	8	C90	
BBG	#43(ne)/M12--		\$320	Y	6+6	F75	-\$200 for 6-train to THB
THB	#123(?) /L15	--	--	N	-6+8	E55	buy 8-train (THB -\$780, PZ -\$220)

PLAYER STATUS (Cert Limit is 15):

Zieske: \$941, 6* BBG, 6* THB, 1 CA, 1 CP, 2 CGR, 2 CV, 1 GT, 3 WGB (20)
 Bailey: \$1267, 6* CA, 6* CV, 6* WGB, 1 THB (16)
 Frueh: \$1171, 6* LPS, 5* CGR, 3 GT, 1 BBG, 1 THB (13+1) <PRIORITY>
 Hanna: \$1677, 6* CPR, 1 CA, 4 LPS, 3 CGR, 1 CV, 1 WGB, 2 THB (17)
 Butcher: \$578, 6* GT, 1 CV, 1 BBG (7)

CORPORATION STATUS

Corp	Prez	Price	Par IO	PoolCash	Trains	Tokens
CA	CB	C250	-- 0 2	\$172	58	D17, F15, 1, Tun
LPS MF	C225	-- 0 0	\$190	58	C14, H15, Tun	
CP	CH	D150	-- 0 3	\$791	5-	M4, M10, N11, J13, Br
CV	CB	E125	-- 0 0	\$155	8-	N11, L13, I12W
CGR	MF	A110	-- 0 0	\$5	8-	K8, F15, C14, H15, 6, Br, Tun
GT	TB	F90	-- 0 0	\$529	8-	P9, N11, M4, 1
WGB	CB	C90	-- 0 0	\$1	8-	J11, L13
BBG	PZ	F75	100 2 0	\$0	66	J15, J13, I12E
THB	PZ	E55	-- 0 0	\$0	8-	L15, J15

Bank has \$4,523.

Available Trains: 888...

Available Tiles:

Yellow: 1(1), 2(1), 3(4), 4(2), 5(1), 6(1), 7(6), 8(8), 9(9), 55(1), 56(1), 57(3), 58(3), 69(1)
 Green: 14(1), 16(0), 17(0), 18(1), 19(1), 20(1), 23(4), 24(1), 25(1), 26(1), 27(1), 28(1), 29(0), 59(2)
 Brown: 39(1), 40(1), 41(2), 42(2), 43(2), 44(1), 45(2), 46(2), 47(1), 65(1), 67(1), 68(1), #127(1)
 Grey: 123(1)



The Cast

Andy York (Red)
Mike Scott (Purple)

Rick Copeland (Blue)
Deb Anderson (Gold)

Turns 10.2-

10.2 (C): Roll = 4: Y collects 2 lumber @ d2. C collects 2 lumber and S 1 at d5. Play "Road Building". Build roads at f3/g3 and f3/g2 for free. Also spend my resources to build roads at f2/g2 and f2/g1 (-bbll) -- score longest road (+2 VP). Build settlement at f2/f3/g2 (-blgs +1 VP).

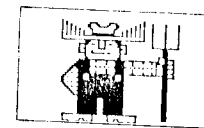
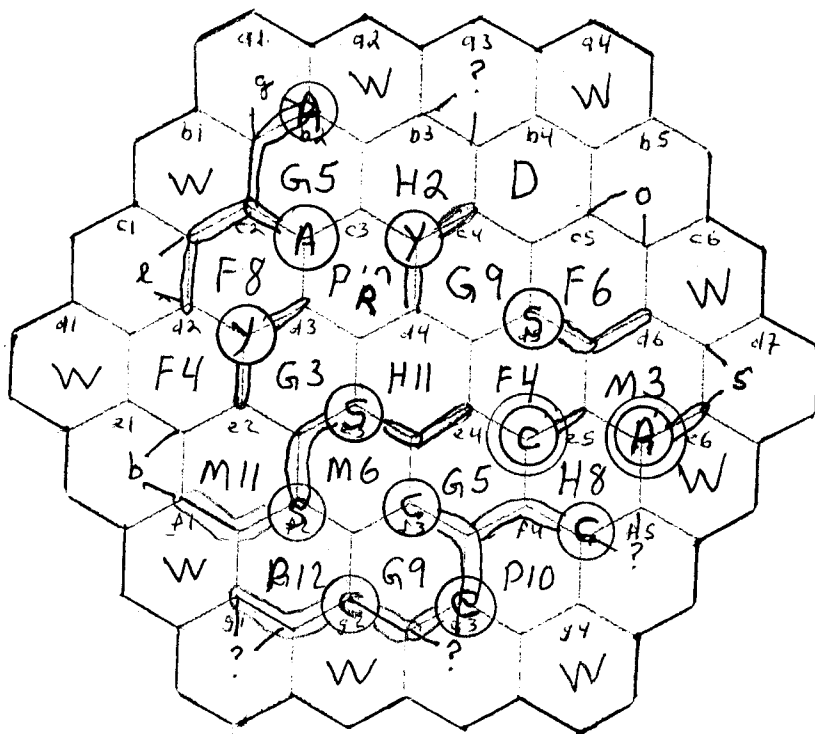
10.3 (S): Roll = 11: S collects 1 brick @ d4. S collects 1 ore at e2. Build roads @ e2/f2, and e2/f1 (-bbll). Buy a card (-gos).

10.4 (A): Roll = 11: S collects 1 brick @ d4. S collects 1 ore at e2. No trade. Build road c1/d2.

11.1 (Y): Roll = 8: A & Y collect 1 lumber @ c2. C collects 3 brick and A 2 brick @ e5. Trade?

Assets: (the Robber is at d6)

	brick	grain	lumber	ore	sheep	Knights	cards	VP	other
Y	2	3	4	1	1	0	2	2	--
C	4	1	0	1	0	0	0	8	Road(7)
S	3	0	1	0	0	1	1	3	--
A	4	0	1	1	0	0	0	4	--



TURN 14 (concluded)

Butitta chooses *Craftsman* and produces 1 corn, 2 coffee, 1 sugar, 2d, and takes his bonus as sugar. York produces 1 sugar and 3 tobacco. Fisher produces 2 corn, 1 sugar, 2 tobacco, 2d. Martin produces nothing. Captain, Settler, and Trader gain 1d.

TURN 15

Governor Fisher chooses *Captain* (+1d) and loads 3 sugar on 7-ship (3+1 vp). Martin ships 2 corn (+2 VP) on 5-ship. Butitta ships 2 corn (2 VP). York ships 1 corn (1 VP). Fisher ships 4 corn (4 VP) using Wharf. Martin ships 1 sugar (1 VP). Butitta ships 1 coffee (1 VP). York ships 1 sugar (1 VP), jettisoning 1 corn & 3 tobacco. Fisher jettisons 4 tobacco. Butitta ships 3 sugar via Wharf (+3 VP), then jettisons 1 indigo & 2 coffee. Ships sail returning 5+4 corn, 6 coffee, and 7+3 sugar to stock.

Martin chooses *Builder* building Tobacco Storage (1d + 4 cr). Butitta builds Construction Hut (1d, 1 cr). York builds not. Fisher builds Coffee Roaster (3d, 3cr).

Butitta chooses *Trader* (+2d), sells coffee (4+1+1d). York sells Tobacco (+3d). Fisher sells indigo (1+1d). Martin can't sell.

York chooses *Craftsman* and produces 1 indigo, 3 tobacco, and 1 sugar. Fisher produces 2 corn, 2 tobacco, 1 sugar and 2d. Martin produces 2 corn and 1 sugar. Butitta produces 2 coffee, 1 corn, 1 sugar and 2d. York takes 1 sugar as his bonus. Mayor, Prospector, & Settler gain 1d.

TURN 16

Governor Martin chooses *Prospector* (1+1d).

Butitta chooses *Builder* and builds City Hall (8d, 2 cr). York builds L Warehouse (6d). Fisher builds Martin builds University (5d, 3 cr).

York chooses *Captain* and ships 7 Indigo on the 7-ship (7+1 VP). Fisher ships ...

Martin: Gov. Prospector. Sm Warehouse(x), Sm Indigo(x), Sm Sugar(x), Residence(x), Hacienda(x), Hospice(x), L Sugar(), Harbor(), University(). 2xCorn(x), Sugar(x), 2xSugar(), 4xQuarry(x), Indigo(x), Corn(), Indigo(). 0d, 12 VP, 2 indigo, 2 corn, 1 sugar.

Butitta: Builder. Sm Market(x), Sm Indigo(x), C Roaster(x), Factory(x), Office(x), Wharf(x), Sm Sugar(x), Construction Hut(), City Hall(). Indigo(x), 2xCoffee(x), Coffee(), Quarry(x), Corn(x), 2xSugar(x), Tobacco(x), Corn(). 9d, 12 VP, 2 coffee, 1 corn, 1 sugar.

York: Captain. Sm Indigo(x), L Indigo(x), Sm Warehouse(x), Sm Sugar(x), Tobacco St(x), L Warehouse(). 4xIndigo(x), Corn(), 3xTobacco(x), Sugar(x), Coffee(). 0d, 40 VP, 1 indigo, 3 tobacco, 2 sugar.

Fisher: Sm Market(x), Hospice(x), Sm Indigo(x), Tobacco St(x), Factory(x), Wharf(x), L Sugar(x), Harbor(), C Roaster(). 2xCorn(x), 3xQuarry(x), 2xTobacco(x), Indigo(x), Sugar(x), Coffee(x). 4d, 20 VP, 2 corn, 2 tobacco, 1 sugar.

AVAILABLE BUILDINGS: All but Sm Indigo, Sm Market, Sm Warehouse, Hospice, Tobacco St, Factory, Harbor, Wharf, Residence, City Hall.

AVAILABLE PLANTATIONS: Corn, Sugar(x2), Tobacco(x2)

BONUS ROLES: Mayor(1d), Prospector(1d), Settler(2d)

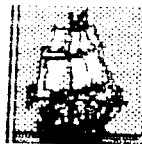
COLONY SHIP: 5 colonists

SHIPS: 5-ship, 6-ship, 7-ship (7 indigo).

STOCK: 33 VP, 9 colonists, 6 coffee, 6 corn, 0 indigo, 5 sugar, 3 tobacco

TRADING HOUSE: coffee, tobacco, indigo.

ON DECK



1835: Hanna, Zleske
AGE OF RENAISSANCE: Copeland
BALKAN WARS: K Wilson, Dave A
BRITANNIA: Zleske, Dave A, Martin
CIRCUS MAXIMUS: Nichols, Zleske
COLONIAL DIP: Burgdorf, Copeland, Nichols, Dave A (need 3 more)
DIPLOMACY: K Wilson, Copeland, Nichols
GUNSLINGER: Scott, Fowble, R Fisher; need 4 or 5 more
KREMLIN: Nichols, Martin, Scott
LIFT-OFF!: York, Dave Anderson
MACHIAVELLI: Nichols, Dave A, Scott (need 1-5 more)
MAGIC REALM: Butitta, Deb A (need 4-8 more)
MERCHANT OF VENUS: R Fisher, Deb A, Dowrey (need 1-3 more)
PUERTO RICO: Bill Salvatore, York
RUSSIAN CIVIL WAR: Scott, Martin
SAMURAI (AH): Copeland
SILVERTON: Zleske, Deb A, Nichols, Morrison (need 1-3 more)

OTHER POSSIBILITIES: 1829 (N OR S), 1830, 1856, 1870, 4000 AD, AIR BARON, ATTIKA, BRITANNIA II, CIRCUS IMPERIUM, CIRCUS MINIMUS, DOWN WITH THE KING, EVO, GODSFIRE, HISTORY OF THE WORLD II, KAMAKURA, KREMLIN, MONSTERS RAVAGE AMERICA, PLANET MINERS, SAMURAI, STELLAR CONQUEST, TITAN, WIZARD'S QUEST

OUR SUBSCRIBERS

Dave & Debbie Anderson, 20832 Tuck Rd, Site 32, Farmington Hills, MI 48336; (248)473-7482; ravenclawnerdz@sbcglobal.net
 Christopher Bailey, 264 Fifth Avenue, Apartment 3C, New York, New York 10001; (917) 553-0070; christopher_bailey@yahoo.com
 Alan Bargender, 1517 Creekside Road, Green Bay, WI 54311; alanmb777@hotmail.com
 Paul Barrett, UK; pdb@hiraganadragon.plus.com
 Tom Blennerhassett, UK; aquamonkey6@hotmail.com
 John Boardman, 234 East 19th St, Brooklyn, NY 11226-5302
 Peter Boyum, 522 U Street, Rio Linda, CA 95673, (916) 705-2091; peterboyum@msn.com
 Martin Burgdorf, UK; mjb@astro.livjm.ac.uk or martin_burgdorf@hotmail.com
 Tom Butcher, 2129 Pinebrook Trl, Cuyahoga Falls, OH 44323-3303; thomas-butcher@sbcglobal.net
 John Butitta, 339 Ninth, Neenah, WI 54956; (414) 725-7218; docjob@tds.net
 Rick Copeland, 1531 Pack Horse Rd, Winchester, VA 22603; (540) 888-4420; cope655321@topolva.net
 James Curtis, james2c@aol.com
 Bob Dowrey, 76 Potter Ave., Orchard Park, NY 14127; dowreyhome@adelphia.net
 Ron Fisher, 210 Normandy Dr, Wilmington, NC 28412; (910) 395-8330; skylark3@charter.net
 Mark Frueh, 1128 Olympus Dr, Naperville, IL 60540; (630) 357-7780; mark_frueh@msn.com
 Jim and Marcia Fryling, 5444 Bonnie, Kentwood, MI 49506; james_fryling@cornerstone.edu
 Tim Haffey Sr, 810 53rd Ave, Oakland, CA 94601; (510) 536-3513; trhaffey@yahoo.com
 Chuck Hanna, 379 Wilett Ct, Severna Park, MD 21146-1912; (410) 544-3077; channa76@yahoo.com
 Chris Hassler, 2000 S Armour Ct, La Habra, CA 90631; chassler@adelphia.net
 Tom Howell, 365 Storm King Rd, Port Angeles, WA 98363; (360) 928-9698; off-the-shelf@olympus.net
 Andy Lischett, 2402 Ridgeland Ave, Berwyn, IL 60402
 Brad Martin, Australia; wesfront@hotmail.com
 Wayne Morrison, LTSI-ASAC Khamis 05267, 7150 Troy Hill Dr, Elkridge, MD 21075; thomascat_ksa@yahoo.com
 Cary Nichols, 756532-938 S FM 1673, Snyder, TX 79549-8812
 Gerry Paulson, Box 156, Amisk, AB T0B-0B0 CANADA; hanginga@telusplanet.net
 Paul Saunders, 6 North Hill Dr, Carriere, MS 39426, (601) 798-2347; paul.saunders@charter.net
 Robert Skynner, thebagge@yahoo.co.uk
 Mike Scott, 4040 E. Piedmont Dr, Space 61, Highland, CA 92346; (909) 864-4343; mikemag2@juno.com
 Jack & Rose Shacklett, 365 Hobbs-Reesor Rd, Vine Grove, KY 40174; (502) 828-4281; pilotshack@yahoo.com
 Graham Wilson, 48 Harbourview Cres, Toronto, Ontario M8V 4B1; grahamaw@rogers.com
 Kevin Wilson, 18623 Santa Maria Dr., Baton Rouge, LA 70809-6702; (225) 751-3857; kcevinw1@cox.net

Andrew York, PO Box 201117, Austin, TX 78720-1117; wandrew@compuserve.com
 Paul Zleske, 3501 Keenan Lane, Glenview, IL 60025; (847) 498-9237; zleskep@juno.com
 Rudy Zodda, 7 Hansen Ave, New City, NY 10956; (845) 708-9056; rzodda@aol.com

DEADLINE FOR MOST GAMES IS 1800 CENTRAL TIME 2 MAR 07

The Bottom Line

This is **BORIS THE SPIDER**, a 'zine dedicated to the play of multiplayer games. BORIS is usually published following the first Friday of the month by Paul Bolduc, 203 Devon Ct, Ft Walton Beach, FL 32547-3110 and currently has a subscription price of \$11.50 for 12 issues in hardcopy in the US. A hardcopy sub will also include an e-mail sub. Make checks payable to "Paul Bolduc". BORIS can be reached at (850) 863-9081, or prbolduc@aol.com. If phoning, expect to be greeted by an answering machine. If we're here, not engaged in an epic computer battle or enthralled in baseball, hockey, or college football, and recognize your voice, you may get to talk to a real human, so don't hang up upon hearing our recorded message (it changes every power outage). Visit the BORIS Website at:

<http://hometown.aol.com/prbolduc/boris/borishome.htm>



Source of the Nile

Turn 57



The Cast:

Brad Martin
 Andrew York

Jason Bargender
 Don Chinnery

D&D Anderson

Published: DD12 (lake, +79 acres), DD11 (lake, +75 acres), CC11 (lake, +88 acres), AA13 (veldt, river from 1 and 4 to 2), Z14 (veldt, river from 5 to 4, cataract, waterfall is 350 feet), Z13 (veldt, river from 1 to 2), G3 (jungle, river from 1 to 5), F3 (jungle, river from 1 and 3 to 4), E4 (jungle, river from 3 and 6 to 4), D3 (lake +38 acres), G4 (jungle, river starts and runs to 6), G24 (jungle, river from 3 to 6), H24 (swamp), G22 (mountain, river begins and extends to 4), H21 (desert, river from 1 to 3, oasis), I22 (veldt, river from 6 to 3), J19 (swamp), J18 (veldt), K18 (veldt), P2 (swamp), O4 (lake, +21 acres), N4 (lake, +33 acres), FF8 (mountain, river from 6 to 5, cataract), FF7 (jungle/swamp), EE8 (jungle/swamp), EE9 (mountain, river from 3 to 1, 65 foot waterfall), DD8 (jungle/swamp), GG5 (veldt, river to 1), FF5 (veldt, river from 4 to 1), EE6 (desert, river from 4 to 1), DD6 (veldt, river from 4 to 2, 85 ft waterfall), DD7 (jungle/swamp), CC6 (veldt), BB6 (veldt, river to 5), BB5 (mountain, river from 2 to 4 and 5), CC4 (desert, river to 4), DD3 (swamp), CC5 (desert), DD10 (lake, +32 acres), DD9 (lake, +56 acres), CC10 (veldt), CC9 (jungle, river begins and flows to 1), BB10 (jungle, river from 4 to 1), AA11 (jungle, river from 4 to 1), AA12 (veldt), Z12 (veldt, river 4 to 5), CC12 (lake), F4 (veldt, river 3 to 5), G5 (swamp), F5 (desert, river to 4), U3 (jungle), U4 (veldt), V5 (jungle, river from 1 to 3), W6 (jungle, river from 6 to 2), V6 (jungle), U6 (jungle, river from 5 to 1), U7 (jungle, river to 3), H19 (swamp), F22 (desert, oasis).

Positions still available for fearless explorers. Contact Alan Bargender if interested.

