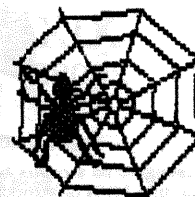


BORIS THE SPIDER

c/o 203 Devon Ct
 FWR, FL 32547-3110
<http://hometown.aol.com/prbolduc/boris/borishome.htm>

TABLE OF CONTENTS

Addresses	p 18
BLACKBEARD	p 8
BRITANNIA	pp 6,5
DIPLOMACY	
XIX	p 2
MACHIAVELLI III	p 19
DUNE	p 3
1870	pp 10-11
Game Openings Elsewhere	p 17
HISTORY OF THE WORLD	pp 16-17
KINGMAKER	p 4
KREMLIN	p 5
MERCHANT OF VENUS	pp 12-13
On Deck	p 18
PUERTO RICO	pp 7,3
RAIL BARON	pp 9,12
SILVERTON	pp 14-15
Solutions to Sep Puzzle	pp 2, 19

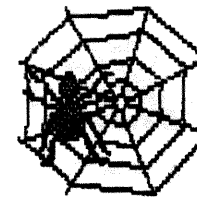


VOLUME IX, #11

BORIS THE SPIDER

A Journal of Duplicitous Doings,
 Raw Power, and Naked Greed
 "Oh, what a tangled web we weave
 When first we practice to deceive!"
 --Sir Walter Scott--

(#267)



8 Nov 07

Salvatore Wins "Coquito"!

Our third game of *PUERTO RICO* was won by Bill Salvatore, a legend in early pbm 1830 lore. Congratulations on a swift 12-turn march to victory.

"Boris XIX" and *MACHIAVELLI* "III" begin in earnest this time but we failed to inaugurate our second game of *WIZARD'S QUEST*, falling one short of a quorum. With only two empires left to play, "Kolchas" should finish next time so that will free up some space and barring a run on 12-trains, "Bret Maverick" should finish next time also.

IMMEDIATE OPENINGS:

WIZARD'S QUEST: Need 1 to 3 more. Would like to use ACTS. See Reference 1.

BORIS'S BULLETIN BOARD

THOUGHT FOR THE MONTH: "There are only two ways to approach life, as a victim or as a gallant fighter and you must decide if you want to act or react." -- Merle Shain

NEW ON THE WEBSITE: Transcript for "Rats For Sale" has been added to the Finished section; "Hall of Fame" has been updated. "Transcripts for "Liquor is Quicker", *RUSSIAN CIVIL WAR*, and "Volols" are nearly ready.

PICTURE OF THE MONTH: Boris getting thrashed at *GLORIA MUNDI* at WBC.

Tom Butcher needs 18xx players. If he can't start at least two games by the end of the year, he'll fold *Blut und Eisen* at the conclusion of the 1870 game now running. Get in there and sign up!

BOOS & KUDOS

The Madame Bolduc Press Excellence Award (and free issue) goes this month to Paul Zleske for his press in "Gawain".

This month's Ms Nar Super-Sudsy Bomb is lobbed at Paul Saunders for very late *DIPLOMACY* orders.

REFERENCES:

1. <http://hometown.aol.com/WizQuest/pbem.html>

PERSONAL COMMUNICATION HERE (maybe):

Deadline for most games is 1800 CST 7 Dec 07



War!!

Spring 1901

XIX
2008B

MINAS MORGUL: Italy has declared war on Russia citing snubs to her messengers as a *casus belli*. But what is the true mission of that Italian army in TRL? It could as easily slip into MUN or support its fellow into VIE than continue on its alleged mission to MOS. Russia, for its part, claims its telegraph lines have been repeatedly cut by anarchist saboteurs and points out that messages sent, but never received, can not be answered. Elsewhere on the Continent a veritable land rush has started as the powers attempt to annex as many minor countries as possible before the main event begins.

The Board

AUSTRIA (Wilson): A Bud-Ser, [A Vie-Gal], F Tri-Alb.

ENGLAND (Fisher): A Lpl-Yor, F Edi-Nwg, F Lon-Nth.

FRANCE (Anderson): A Mar-Spa, A Par-Bur, F Bre-Mid.

GERMANY (Nichols): A Ber-Kie, A Mun-Ruh, F Kie-Hol.

ITALY (Copeland): A Rom-Ven, A Ven-Tri, F Nap-Ion.

RUSSIA (Saunders): A Mos-Ukr, [A War-Gal], F Sev-Rum, F StP(sc)-Bot.

TURKEY (Fryling): A Con-Bul, A Smy-Arm, F Ank-Con.

Orders in brackets fail.

Due next time are orders for Fall 1901.

EMBASSY BEAT

Welcome back my friends,
to the game that never ends,
we're so glad you could attend,
step inside, step inside.

Pay no mind to the sabre-rattling on the continent; Her Majesty wishes to assure all that the full might of the Royal Navy will be intent on preserving peace and preventing injustice in this new century and, people; can't we just get along? -- Sir Ronald, first Sea Lord, for Her Majesty

ITALY DECLARES WAR ON RUSSIA! Today the Pope announced a campaign into Russia to teach the Czar and his bishops a lesson. The Pope is extremely displeased at the most recent snubbing by his majesty. Italian troops, led by the fanatical Mountain Divisions, are now headed through the Alps towards Moscow. The Italian General staff wishes to thank Austria and Germany for their cooperation in allowing the Italian Army safe passage through the Tyrolean, Bohemian, and Silesian mountains on their way to make a great sneak attack on Warsaw. The Italians are not worried about the Russians finding out about the attack as the Russians obviously cannot read!

Solution 1 to September's Puzzle

Using t_1 & t_2 as the times of the meetings, x as the river's width, c as the speed of Chem and v as the speed of Tech, we can immediately derive four equations in five the unknowns:

$$\text{EQN 1)} \quad 52 = ct_1$$

$$\text{EQN 2)} \quad x - 52 = vt_1$$

$$\text{EQN 3)} \quad x + 20 = ct_2$$

$$\text{EQN 4)} \quad 2x - 20 = vt_2$$

Combining the eqns in t_1 we get

$$\text{EQN 5a)} \quad t_1 = 52/c = (x - 52)/v$$

$$\text{EQN 5b)} \quad c = 52v/(x - 52)$$

Combining the eqns in t_2 we get

$$\text{EQN 6a)} \quad t_2 = (x + 20)/c = 2(x - 10)/v$$

$$\text{EQN 6b)} \quad v = 2(x - 10)c/(x + 20)$$

Substituting EQN 5b into EQN 6b, then dividing each side by v and rearranging we get

$$\text{EQN 7a)} \quad v = 2(x - 10)52v/(x - 52)(x + 20) \quad \text{EQN 7b)} \quad x^2 - 136x = 0$$

So, the answer (in yards)

$$\text{EQN 8)} \quad x = 136$$



DUNE
No Combat!!



BOARD:

Atriedes (Wilson): 10T @ Arrakeen, 10R, 5L, 10S, (0/7) KH, 1C

Guild (Nichols): 5T @ Tuek's Sietch, 15R, 5L, 5S, 1C

Fremen (Anderson): 5T @ Seitch Tabr, 5T False Wall West(s17), 7R, 3*R, 5L, 3S, 1C.

Harkonnen (Barrett): 10T @ Carthag, 10R, 5L, 2C, 10S.

Spice: Oh Gap (6) & Hagga Basin (6).

Storm: Sector 6

Turn 1

1.3 Bidding: There are four cards available.

Card 1: H bids 3S. A & G bid 2S. F bids 0. H gets _____ & _____ (-3S).

Card 2: A & H bid 3S. G bids 2S. F bids 0. A gets _____ on tie break (-3S).

Card 3: H bids 3S. A & G bid 2S. F bids 0. H gets _____ & _____ (-3S).

Card 4: G bids 2S. A bids 1S. F & H bids 0. G gets _____ (-2S).

1.4 Revival & Movement:

Revival: Nothing to Revive.

Shipping: G ships 2T to Tuek's Sietch (-1S).

Movement: H moves 6T Carthag-Hagga Basin(s12). F moves 4T False Wall West-Habbanya Ridge Seitch. A moves 4T Arrakeen-Oh Gap, G moves 2T Tuek's Sietch-South Mesa(s5).

1.5 Combat: None.

1.6 Spice Collection: A collects 6S @ Oh Gap, H collects 6S @ Hagga Basin.

2.1 Storm: The Storm moves 4 to Sector 10, killing A 4T in Oh Gap. Carthag is in Storm. F sees that it will move _ next turn.

2.2 Spice Blow: Cielago North (8) and Broken Land (8)

2.3 Bidding: There are 4 cards available. A sees they are _____, _____, _____.

BOARD:

Atriedes (Wilson): 6T @ Arrakeen, 10R, 5L, 13S, (0/7) KH, 2C

Guild (Nichols): 5T @ Tuek's Sietch, 2T @ South Mesa(s5), 13R, 5L, 2S, 2C

Fremen (Anderson): 5T @ Seitch Tabr, 1T False Wall West(s17), 4T @ Habbanya Ridge Seitch, 7R, 3*R, 5L, 3S, 1C.

Harkonnen (Barrett): 4T @ Carthag, 6T @ Hagga Basin(s12), 10R, 5L, 6C, 10S.

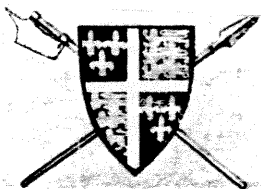
Spice: Cielago North (8) & Broken Land (8).

Storm: Sector 10

Tanks: A 4T

--"Coquito" (continued from p 7)

Martin: Congratulations to Bill, and thanks to Paul for GMing. I seem to have problems with this game - must be a lack of a long-term strategy? But please sign me up for another one.



KINGMAKER

"King of Pain"

Turn 30 Combat - Turn 31 Parliament

KOP

The Cast:

THE MAD HUNGARIANS (Dowrey): Fitzalan (30), Warden of the Northern Marches (1150), Stanley (50), Earl of Richmond (40), Marshal of England (100), *Le Lucas*, Bouchier (10), Earl of Salisbury (30), Berkeley (10), Earl of Essex (20), Event cards (1), Crown Cards (1).

THE CALIFORNIA CONNECTION (Scott): Pole (30), Chancellor of England (50), Holland (20), Duke of York (30), Courtenay (30), Admiral of England (50), Lancaster (120), Event cards (6), Crown Cards (3).

KNIGHTS OF THE PRIVY POT (Deb Anderson): Mowbray (50), Treasurer of England (50), Hastings (10), Bishop of Carlisle (30), Bishop of Durham (30), Cromwell (10), Earl of Kent (30), Steward of the Royal Household (50), Percy (100), Lieutenant of Ireland (250), Archbishop of York (30), Northampton (20), *Le Nicholas*, *Le Rose*, Beaufort (30), Constable of London (250), Carlsbrooke, Newcastle, Event cards (4), Crown Cards (7).

THE STAFFORDSHIRE QUARTERSTAFFS (Shacklett): Stafford (30), Chamberlain of Chester (250), Nottingham (20), Neville (50), Audley (10), Roos (20), Herbert (10), Talbot (30), Greystoke (10), Irish Kerns (50), Event cards (5), Crown Cards (1).

WESTERN FRONT (Martin): Howard (10), Duke of Exeter (20), Warden of the Cinque Ports (50), Archbishop of Canterbury, Bristol (30), Coventry (20), *Le Swan*, Clifford (10), Earl of Worcester (30), Captain of Calais (350), Bishop of Lincoln, *Le Michael*, Event cards (6), Crown Cards (1).

TURN 30:

COMBAT:

Percy adds 20 Scots archers. Stafford sallies forth. Holland, hoping to duplicate Percy's successful human sacrifice, lops off Richard's head and impales it on a Pole. Will it work for him too?

Preston: Percy (200), Mowbray (100), Hastings (90), & Cromwell (90) vs Fitzalan (80), Berkeley (50), Bouchier (50), York (50), Pole (80), Grey (30), Holland (40). Net 480 vs 380 = 1.26:1 (Just over 5:4). Card #74, 4-1 Victory (n/e). Killed Scrope, Holland. Guess not. Holland (dr=6, remains w/ TCC, but out of play).

Leeds: Beaufort (280) vs Stafford (120); odds 3.5:1. Card #44. Bad Weather delays attack.

CROWN CARDS: No cards available. MH will get the next card.

TURN 31

EVENT CARDS:

MH: #72, Plague @ Calais (Clifford & Edmund are at Pevensey so are unaffected).

TCC: #71, Plague @ Bristol (n/e)

KPP: #24, Parliament may be summoned by Chancellor

SG: #23, Parliament must be summoned.

WF: #49, Peasant Revolt. Neville to Raby, Scrope to Masham (n/e), Roos to Helmsley, Mowbray to York, Archbishop of York (Percy) to York, Marshal (Stanley, on Continent, can't respond) to Wakefield.

PARLIAMENT: Pole summons Parliament at Preston and serves writs on Stanley, Clifford, and Courtenay. Greystoke with the Irish Kerns joins SG. Stafford adds French Foot. All of SG, TCC, KPP, Clifford of WF, and Stanley of MH attend. The rest of MH is already there.

Chancery: Earl of Wiltshire (30), Chancellor of Cornwall (1150).

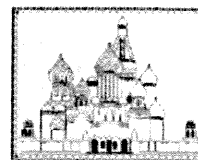
OK, let's do it this way, Parliament will occur at the end of the Event Phase. During the following movement phase, nobles will have the choice of teleporting to a home Castle, moving normally, or remaining in Preston. No attacks are allowed this turn.

Chancellor Pole invites those interested in the earldom or in Cornwall e-mail him "and request what they would like and what they offer". We call for his proposals and a vote thereon by 21 Nov.

NOBLES: Audley, Beaufort, Berkeley, Bouchier, Clifford, Courtenay, Cromwell, Duke of York, Fitzalan, Grey, Greystoke, Hastings, Herbert, Mowbray, Neville, Percy, Pole, Roos, Stanley, Stafford Talbot @ Preston. Howard in Pevensey.

SHIPS: *Le Christopher*, *Le Margarete*, *Le Lucas* @ Beaumaris, *Le Michael* interned @ Carlsbrooke; *Le Nicholas* @ Corfe, *Le George* @ Rye, *Le Rose* @ Preston, *Le Swan* & *Le Trinity* @ Pevensey.

HEIRS: Reds: Margaret & Edward of Wales in Beaumaris; Artie @ Kingston; Pretender (20) w/ Fitzalan in Preston. Whites: George @ Preston w/ Stafford; Edmund II of March in Preston w/ Clifford. Henry VI, Richard of Gloucester, Edmund of Rutland, Richard of York. (RIP).



KREMLIN

DLA Subverts Bugaloff!

Year 3c



The Cast: (in Table order)

Dave Anderson, Decaying, Licentious Antiquarians (DLA): 1 card

Brad Martin, Western Front (WF): 3 cards

Doug Kent, Whining Kremlin Pigs (WKP): 3 cards

Paul Barrett, Politburo Bureaucrats (PB): 2 cards & #48

Mike Scott, The California Connection (TCC): 3 cards

Cary Nichols, Re-Education Deployment Society (REDS): 1 card, 1 wave

Politburo

Party Chief:	Bungaloff (W)	58	REDS(6), WF(5)
KGB Head:	Nikotin (R)	64++	WF(6), REDS(3)
Foreign Minister:	Nogoodnik (V)	57	WF(9), WKP(8)
Defense Minister:	Schrutkov (B)	80w++	
Ideology Chief:	Boremtudev (K)	67+	WKP(1)
Industry Minister:	Satin (O)	62	
Economy Minister:	Palavrian (G)	76++	DLA(2), PB(1)
Sport Minister:	Strychnin (T)	57	
Candidates: CDEUZ			People: FHIJLMPQSYX
KREMLIN WALL: A			Siberia: N

3.9 FIRST INTERPHASE:

DLA reveals 10 IP on W, then adds 1 IP to make 10+, then draws a card. WF adds 2 IP on O. WKP places 2 IP on V. PB discard cards #45 & #48 and draws two new cards (# & #). TCC places 2 IP on T. REDS reveals 10 IP on W, 9 IP on R and 2 IP on O, then places 1 IP on R, and can't place 1 IP of W, so gets a card (#).

Status:

DLA: 2 cards	WF: 3 cards	WKP: 3 cards
PB: 3 cards	TCC: 3 cards	REDS: 2 card, 1 wave

Due next time are your orders for the first half of Turn 4.

Politburo

Party Chief:	Bungaloff (W)	58	DLA(10+), REDS(6), WF(5)
KGB Head:	Nikotin (R)	64++	WF(6), REDS(3)
Foreign Minister:	Nogoodnik (V)	57	WKP(10), WF(9)
Defense Minister:	Schrutkov (B)	80w++	
Ideology Chief:	Boremtudev (K)	67+	WKP(1)
Industry Minister:	Satin (O)	62	WF(2)
Economy Minister:	Palavrian (G)	76++	DLA(2), PB(1)
Sport Minister:	Strychnin (T)	57	TCC(2)
Candidates: CDEUZ			People: FHIJLMPQSYX
KREMLIN WALL: A			Siberia: N

LEGEND: s = strong, w = weak, + = sick, ++ = ill, ? = under investigation, C# = card # remains as a bribe, © = taking the Cure.

--"Gawain" (continued from p 6)

Caledonians (0.5): 2A @ Orkneys.

Irish (1): 2R, @ Atlantic; 1A @ Cornwall, Devon.

Scots (1): 1A, Fergus @ Skye

Jutes: 2A @ Kent.

Saxons (2): 2R @ Frisia; 2A @ March; 1A @ Downlands, N Mercia, S Mercia, Suffolk, Sussex, Wessex.

Angles: 8A @ North; 3A @ Dunedin; 2A @ Strathclyde; 1A @ Pennines.



BRITAINIA "Galvain" Turn VII



The Cast
Copeland: Purple
Zieske: Green

Anderson: Red
Martin: Blue

Score: Purple 55, Green 22, Blue 17, Red 10.

TURN VII

Board:

R-Bs: 2C Arthur @ Essex.

Welsh (0.5): 2A @ Gwent, Gwynedd, March, Powys; 1A @ York.

Brigantes (1): 2A.L @ Clwyd; 2A @ Dalriada; L @ ????

Picts (0.5): 4R @ Caithness; 1A @ Alban, Galloway, Mar, Moray, Skye.

Caledonians (2.5): 2A @ Hebrides, Orkneys.

Irish: 3R, 1A @ Atlantic; 1A @ Dyfed.

Scots (1): 3A, Fergus @ Irish.

Jutes: 2R @ Channel, 2A @ Cornwall.

Saxons (1.5): 4A @ Frisian; 2A, Henguist @ Downlands; 2R @ Channel; 2A @ Hwicce, S Mercia; 1A @ Avalon.

Angles: 8A @ North; 3A @ Dunedin; 2A @ Strathclyde; 1A @ Pennines.

WELSH: Grow 4 pp. Add 1A @ York. 1A York-Lindsey; 2A March-York.

BRIGANTES (1): Grow 1 pp. Place Leader @ Clwyd. 2A.L Clwyd-Cheshire-Cumbria-Galloway 6+1,3,2 - 1 Pict).

Brigante Leader to his troops: Men, we fight today for our freedom. The Men cheer. We fight for our homes. The Men cheer. We fight for Scottish malt. The Men Cheer. We fight for our sheep at night. The men go Huh???? As the Leader charges wildly into battle...

PICTS (0.5): Grow 2.5 pp. Add A @ Alban. 1A Caithness-Skye, 1A Caithness-Moray.

CALEDONIANS (2.5): Grow 1 pp. Add 1A @ Hebrides. 2A Hebrides-Skye (6,1,6 - 1 Pict, Caledonian; 1 Caledonian r-Hebrides).

IRISH: Grow 1 pp. 3R, 1A Atlantic-Cornwall (6,5,5,1,6,4; 6,4,1,3 - 1R, 2 Jutes, 2R w-Atlantic), 1A Dyfed-Devon.

Irish to Jutes: Advertisement in local paper: Free trips for all Jutes to Vallhalla. See Irish tourist board for details. Besides, you ought to be on the other side of the island like Kent.

Jutes to Irish: Valhalla? is that a town in Kent? I had said English Channel, land at Wessex and go right (they ended up going left!)

SCOTS (1): Grow 0 pp. 1st Wave: 3A.L Irish-Icelandic-Hebrides (6+1,6+1,3,6,5 - 2 Scots, 2 Caledonians). 2nd Wave: 1A.L Hebrides-Skye. (5+1,4 - 1 Pict).

Fergus to Pictland - you have nothing we want. Best to turn our joint attention on all those little blue A's floating around in the North Sea. Long live the blueskins!

JUTES: Grow 0 pp. 2A Channel-Kent.

SAXONS (1.5): Henguist dies. Grow 3.5. Add 1A @ Downlands. 1A S Mercia-Suffolk, 1A Avalon-Wessex, 1A Downlands to Sussex, 2A Hwicce-March, 2R Channel-Frisian-Essex, 4A Frisian-Essex (5,4,3,2,2,1,6+1,3+1; 5,4,3,3,5+1,1+1; 5,1,1,5+1,1+1 - 4 Saxons, 2R W-Frisian), 1A Downlands-S Mercia-N Mercia.

ANGLES: ...

Score: Purple 55, Green 22, Blue 17, Red 10.

Board:

R-Bs: 2C Arthur @ Essex.

Welsh (1.5): 3A @ York; 2A @ Gwent, Gwynedd, Powys; 1A @ Lindsey.

Brigantes (2): 2A.L @ Galloway; 2A @ Dalriada.

Picts (0): 2A @ Caithness, Alban, Moray; 1A Mar.

--continued on p 5



PUERTO RICO

Turn 12-End
Salvatore Wins!



The Cast:

John Butitta Andy York Brad Martin Bill Salvatore Ron Fisher

Turn 12 (concluded)

Martin chooses **Bulder** and builds **Factory** (4d, 3 cr). Salvatore builds **Construction Hut** (2d). Fisher builds **Wharf** (6d, 3cr). Butitta builds **coffee roaster** (3d, 3 credit). York builds **Office** (5d).

Salvatore chooses **Mayor** (1d), receives four colonists, and staffs **Guild Hall**, **Fortress**, **Tobacco**, and **Tobacco Storage**. Fisher gets 3 colonists and staffs **Wharf**, **L Indigo**, **Indigo plantation**. Butitta gets 3 colonists and staffs **Roaster** (twice) and **Tobacco Storage**. York gets 3 colonists and staffs **Office**, **Coffee**, and **Corn**. Martin gets 2 colonists and staffs **Factory** and **Indigo**. Colony ship loads 10 colonists from stock.

Fisher chooses **Craftsman** and produces 2 indigo, 2 coffee, and 1 corn. Butitta produces 2 corn, 2 sugar, 1 indigo, and 1 tobacco. York produces 4 indigo, 1 corn, and 1 sugar. Martin produces 2 indigo, 1 sugar, 1 tobacco, and 3d. Salvatore produces 3 tobacco, 1 sugar and 1d.

Butitta chooses **Captain** and loads 5 corn on 6 ship (5+1 VP). York loads 5 indigo on 7-ship (5 VP). Martin loads 2 indigo (2 VP); 7-ship full. Salvatore loads 3 tobacco on 8-ship (3 VP). Fisher loads 1 corn (1+1 VP); 6-ship full. Butitta loads 1 tobacco (1 VP). York jettisons corn. Martin loads 1 tobacco (1 VP). Salvatore jettisons 1 sugar. Fisher ships 2 coffee via **Wharf** (2+1 VP). 6- and 7 ship sail.

GAME OVER.

York: **Gov. Prospector**. S Indigo (x), L Indigo(xxx), S Sugar(x), Hacienda(x), Office(x). 4xIndigo(x), 3xSugar(x), Tobacco(x), Coffee(x), Corn(x). Od, 30 VP, 1 sugar.

Martin: **Bulder**. S Indigo (x), L Sugar (x), L Indigo(x, x), Hacienda(x), L Market(x), S Sugar (x), Tobacco St (x), Factory(x). 3xIndigo(x), 2xQuarry(x), 2xSugar(x), Sugar (x), Coffee (x), Corn(x), Corn (x), Tobacco(x), Tobacco (x). 4d, 20 VP, 1 sugar.

Salvatore: **Mayor**. S Market(x), Tobacco St(xxx), S Sugar(x), S Indigo(x), Factory(x), S Warehouse(x), L Sugar (x), Guild Hall(x), Fortress(x), Construction Hut (x). 2xCorn(x), 3xTobacco(x), Sugar(x), Indigo(x), Sugar (x). 3d, 17 VP, 3 corn, 1 sugar.

Fisher: **Craftsman**. S Market(x), Hospice(x), Office(x), L Indigo(x, x), Roaster(x,x), Harbor(x), Wharf(x). Corn(x), 2xCoffee(x), 3xQuarry(x), 2xIndigo(x), Sugar (x). Od, 13 VP, 1 corn.

Butitta: **Captain**. S Indigo (x), Hospice(x), L Sugar(xxx), S Warehouse(x), Tobacco St(xxx), Roaster(x), Indigo(x), 2xCorn(x), 2xSugar(x), 3xQuarry(x), Tobacco(x). Od, 23 VP, 2 sugar, 1 indigo.

AVAILABLE BUILDINGS: All but S Market, Hacienda, Hospice, S Indigo, L Indigo, L Sugar, S Warehouse, Tobacco St, Factory, Guild Hall, Fortress.

AVAILABLE PLANTATIONS: Coffee(x3), Corn, Sugar, Tobacco

AVAILABLE ROLES: Captain, Prospector(1d), Settler, Trader

COLONY SHIP: 10

SHIPS: 6-ship, 7-ship, 8-ship (5 tobacco)

STOCK: 19 VP, 2 colonists, 8 coffee, 7 corn, 7 indigo, 5 sugar, 3 tobacco

TRADING HOUSE: coffee, indigo, sugar.

FINAL VP COUNT

Player	Chits	Buildings	Bonus	Total
Salvatore	17	21	11	49
York	30	10	0	40
Butitta	23	12	0	35
Martin	20	14	0	34
Fisher	13	16	0	29

Congratulations to Bill. Thanks to all for timely orders. We have Salvatore, Martin and York signed up for "Dacqutri". Anyone else?

Salvatore: My thanks to everyone for treating the newcomer so amiably -- hope to see you all again over a game-board!

This game had one bulder against four shippers, but an early tobacco monopoly cascaded into an early factory that built a second large building to provide the margin of victory. The Big Indigo strategy almost came into its own, but the game ended just a little too early -- it lasted only twelve turns.

---continued on 3



BLACKBEARD

Turns 163-165



THE CAST:

1. (Barrett) Tew, Sloop
3. (Bargender) Vane**, Sloop
2. (Zodda) Davis, Sloop
4. (Martin) Rackham, Schooner.

STATUS:

#	Captain	Ship	Hex	Spd	Cbt	Not	Cun	Unr	NW	H1	H2	Hostage	Attk
2	Davis	Sloop	P14	+3	6	18	5	3	856	--	--	--	NP
4	Rackham	Senr	J171	+3	5	4	2	7	0	200	--	--	B
4	Rhett*	KC	M22	5	8								
2	Maynard	KC	Box1	4	12sc								
3	Herdman	KC	X16	3	15								
2	Matthews	KC	CC20	2	14sc								
1	Tew	Sloop	P11	+2	4	2	(1)	6	0	10	--	--	S
3	Vane**	Sloop	M22a	+3	6	5	0	6	839	--	--	--	--

The Board:

Guvs: Pro: 35, 46, 53, 31, 41
Anti: 23, 24, 54, 64, 13
Merchants: 15 (B4), 63, 63
Warships: ??? @ S19, B10-4 @ W15
Out-of-Play Pirates: Teach (#3), Portugese (#1), Taylor (#3)
Letters of Marque: PFB
Safe Havens: Vane(Port Royal)

Turn	Player	Action	Draw
163	3	Herman moves from from AA17 to X16. Move Warship W15-V15-U15-T15-S15.	*B 34
164	2	HD moves 3+3, P14-P11 Random Event (reshuffle): Letter of Marque (P) Merchant appears at #21. All W back to cup. S8-4 blockades Vane (-1 to unr)	12 *D, 21 66 26
165	2	HD attacks B4, 6=3+3-4 = 8 = dr ⁶ ; captured, Not +3 0 NW, Hostage = 5+4+1 = Yes, Not +5; HP = 11. Torture (dr ⁶ = 3 = info, +1 unr) Draw new Merchant @ 56 Draw 2 merchants @ 61 Remove Even Merchants, add merchant @ 43	15, 25, 55 *A, 56 *C, 61 62, 43 34
166	2		

STATUS:

#	Captain	Ship	Hex	Spd	Cbt	Not	Cun	Unr	NW	H1	H2	Hostage	Attk
2	Davis	Sloop	P11	+3	6	26	5	4	856	--	--	1(11)	NPB
4	Rackham	Senr	J171	+3	5	4	2	7	0	200	--	--	B
4	Rhett*	KC	M22	5	8								
2	Maynard	KC	Box1	4	12sc								
3	Herdman	KC	X16	3	15								
2	Matthews	KC	CC20	2	14sc								
1	Tew	Sloop	P11	+2	4	2	(1)	6	0	10	--	--	S
3	Vane**	Sloop	M22a	+3	6	5	0	5	839	--	--	--	--

The Board:

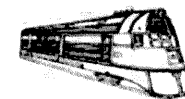
Guvs: Pro: 35, 46, 53, 31, 41
Anti: 23, 24, 54, 64, 13
Merchants: 63, 63, 61, 61, 43
Warships: S8-4 @ M22
Out-of-Play Pirates: Teach (#3), Portugese (#1), Taylor (#3)
Letters of Marque: PFBP
Safe Havens: Vane(Port Royal)

LEGEND: * = minor wound, ** = lost arm, a = anchored, 1 = Indian Ocean



RAIL BARON

Green Escapes Cheaply!



THE CAST

Brad Martin (Blue), 6.5 kS, CB&Q, B&M, C&O
Chris Bailey (Purple), 10.5 kS, NYNH&H, AT&SF
Andy York, (Green), 8.5 kS, C&NW, SAL, RF&P, ACL
Ron Fisher, (Red), 32.5 kS, X, PA

TURN 18.4-27.3

18.4: Red rolls 8-odd, 10-even = Baltimore, then 5. Moves on SL&SF to 4S of KC (-1 kS).
19.1: Blue rolls 7-even, 5-even = Oakland. Moves on SOU to Memphis then 2 NW on MP (-1 kS).
19.2: Purple rolls 11. Moves on ACL 3 to 1 N of Tampa, then SAL to Miami (-5 kS to Green, +30 kS). Buys GN (-17 kS).
19.3: Green rolls 10. Moves on SL&SF to Birmingham (-1+20 kS). Buys not.
19.4: Red rolls 8. Moves on SL&SF to St. Louis then on PA to Indianapolis (-1 kS).
20.1: Blue rolls 8. Moves on MP to 3W of Kansas City (-1 kS).
20.2: Purple rolls 8-odd, 7-odd = Buffalo, then 10. Moves SAL to 1N to Tampa then ACL to GM&O to 1 SW of Birmingham (-5 kS to Green, -1 kS).
20.3: Green rolls 7-even, 5-odd = San Diego, then 5. Moves SOU to New Orleans and establish on SP (-1 kS).
20.4: Red rolls 8. Moves on PA to Baltimore (-1+14.5 kS). Buys CMSP&P (-S18).
21.1: Blue rolls 6. Moves on MP to Pueblo, then 1N on D&RGW (-1 kS).
21.2: Purple rolls 6. Moves 6 on GM&O to 1SE of St Louis (-1 kS).
21.3: Green rolls 12+1. Moves on SP to El Paso (-1 kS).
21.4: Red rolls 2-odd, 7-odd = Kansas City, then 5. Move on PA to 1W of Pittsburgh (-1 kS).
22.1: Blue rolls 12+2. Moves on D&RGW to 1N of Salt Lake City then on SP to 1E of Reno (-1 kS).
22.2: Purple rolls 2. Moves on GM&O to St Louis, then on NYC 1 NE (-1 kS).
22.3: Green rolls 8. Moves on SP to 2 SE of LA (-1 kS).
22.4: Red rolls 6. Moves on PA to St Louis (-1 kS).
23.1: Blue rolls 7. Moves on SP to Oakland (-1+27 kS). Buys D&RGW (-6 kS).
23.2: Purple rolls 7. Moves on NYC to 1 SW of Buffalo (-1 kS).
23.3: Green rolls 11. Moves on SP to 2 LA then AT&SF to San Diego (-1+28.5 kS, 5 kS to Purple). Buys UP (-S40 kS).
23.4: Red rolls 7. Moves on MP to KC (-1+12 kS). Buys not.
24.1: Blue rolls 6-even (choice = Plains), 8-odd = Kansas City, then 5. Moves on SP to 1E of Reno (-1 kS).
24.2: Purple rolls 10. Moves on NYC to Buffalo (-1+15.5 kS). Buys SOU (-20 kS).
24.3: Green rolls 8-even, 10-even = Omaha, then 8. Moves on AT&SF to LA (-5 kS to Purple), then on UP to 2 NE of Las Vegas (-1 kS).
24.4: Red rolls 11-even (choice = NE), 7-even = Washington, then 6. Moves on MP to St Louis, then PA to 1W of Indianapolis (-1 kS).
25.1: Blue rolls 7. Moves on SP to 1N of SLC, then on D&RGW 2SE of SLC (-1 kS).
25.2: Purple rolls 8-even, 5-even = St Paul, then 10. Move on NYC west to Chicago, then on CRI&P to Des Moines (-1 kS).
25.3: Green rolls 8. Moves on UP to 3 NNW of Denver (-1 kS).
25.4: Red rolls 6. Moves on PA to 1E of Pittsburgh (-1 kS).
26.1: Blue rolls 3. Moves on D&RGW to 2W of Denver (-1 kS).
26.2: Purple rolls 9. Moves on CRI&P to St.Paul (-1+8 kS). Buys not.
26.3: Green rolls 7. Moves on UP to Omaha (-1+18 kS). Buys SL&SF (-19 kS).
26.4: Red rolls 6. Moves on PA to Washington (-1+11.5 kS). Buys MP (-21 kS).
27.1: Blue rolls 8. Moves on D&RGW to Denver then on CB&Q to 3W of Kansas City (-1 kS).
27.2: Purple rolls 7-odd, 8-even = Chicago, then 9. Moves on CRI&P to Chicago (-1+4 kS). No buy.
27.3: Green rolls 4-even, 8-even = Houston, then 3. Moves on CRIP to UP, then on UP to 2W of KC (-1 kS).
27.4: Red rolls 5-even, 7-even = San Antonio, then 12+4. Moves on PA to St Louis then on MP to 1W of Memphis (-1 kS).
28.1: Blue rolls 6. Move on CB&Q to Kansas City (-1+19.5 kS). Buy ...

Status:

Player	Cash	Destination	Payoff	RRs
Blue:	36.5 kS	?????	--- kS	CB&Q, B&M, C&O, L&N, NP, D&RGW
Purple:	17 kS	?????	-- kS	NYNH&H, AT&SF, NYC, GN, SOU
Green:	23.5 kS	Houston	9 kS	C&NW, SAL, RF&P, ACL, T&P, UP, SL&SF
Red:	10 kS	San Antonio	17 kS	Express, PA, WP, CMSP&P, MP

--continued on p 12

1870

"Brot Maverlok"
OR 7b-8c

**PLAYER STATUS:**

Bailey: \$183, 6* TP, 4* KATY, 1 SP, 2 FW&D (8+3)
Hanna: \$558, 8* AT&SF, 5* MP, 2 KATY, 1 T&P, 2 SSW, 1 GMO (13+4) <priority>
Zieske: \$125, 7* FW&D, 6* IC, 5* SSW (11+4)
Bolduc: \$178, 4* SL&SF, 1 KATY, 1 AT&SF, 2 SP, 1 SSW (6+2)
Frueh: \$49, 6* SP, 3* GMO, 1 KATY, 1 AT&SF, 1 MP, 1 SSW, 1 SL&SF, 1 T&P (11+2)

CORPORATE STATUS:

Corp	Pres	Price	Par	IO	Pool	Hold	Cash	Dest	Trains	Tokens
SP	MF	B225	68	0	0	1	71	no	4-	N1,M6,1,D
AT&SF	CH	C180	72	0	0	0	199	yes	5-	B9,B11,N1*,1
SL&SF	PB	D120	100	0	3	2	543	no	4-	E12,H17,1,D
FW&D	PZ	F100	82	0	0	1	75	no	46	J3,1,D
T&P	CB	B100	100	2	0	0	437	no	5-	J5,1,D
MP	CH	B82	100	4	0	0	151	no	4-	C18,B11,1,D
IC	PZ	C76	100	3	1	0	370	no	6-	K16,1,D
GM&O	MF	G68	76	3	3	0	0	no	6-	M20,1,D
SSW	PZ	E60y	72	0	0	1	680	yes	5-	H17,E12,J3*
KATY	CB	G50o	68	0	0	2	856	yes	45	B11,B9,N1*,1

OR 7b:

SP: Lay #9(w) in L17 & #8(w) in L19(w), run train M6-J5-J3-B9 for \$180, pay dividends! (MF +\$108, +PB \$36, CB & SP +\$18), price moves to B250, buy 1-"6" train from GM&O for \$88.

SP Destination Run: Play destination token in N17. Run N1-M2-M6-L11-M20-N17* for \$260 & M6-J5-J3-B9 for \$180; pay dividends! (MF +\$266, PB +\$88, CB & SP +\$44), stock price moves to B275.

T&P Destination Run: Play destination token in N17. Run J5-M6-L11-M20-N17* (\$240), pay dividends (CB +\$144, CH & MF +\$24, T&P +\$48); stock to B110.

AT&SF: Lay #40 in C10. Run B11-B9-J3-M2-N1* (\$260). Pay dividends (CH +\$208, PB & MF +\$26). Price to C200.

MoPac Destination Run: Play destination token in J5. Run C18-B11-J3-J5* (\$230). Pay dividends (CH +\$115, MF +\$23, MP +\$92). Price to B90.

SL&SF: Lay #15(sw) in K16. Run J5-J3-E12-H13 (\$180). Withhold. Price to D110.

T&P: Lay #24(ne) in H5; run N17*-M20-L11-M6-J5 (\$240); pay divs (CB +\$144, T&P +\$48, CH & MF +\$24); stock to B120.

FW&D: Lay #6(nw) in D5, #9(se) in C4; run N17-M20-L11-M6-J5-J3 (\$240) and N1-M2-J3-B11 (\$180); pay divs (PZ +\$294, CB +\$84, FWD +\$42); price to F110.

MP: Play tile #15 in C18(e). Run B11-B9-J3-J5* (\$250). Pay (CH +\$125, MF +\$25, MP +\$100). Price to B100.

IC: Play #9(se) in B3 and #9(se) in M16. Run J3-J5-M6-L11-K16-H17 (\$220). Pay divs (PZ +\$132, IC +\$66). Price to C82.

FWD destination Run: Place destination token in A2, run A2*-D5-F5-J5-K4-J3 (\$230) and J3-J5-M6-M2 (\$170). Pay divs (PZ +\$280, CB +\$80, FWD +\$40). Price to E120.

GM&O: Upgrade M20 w/tile #63, no train or run - stock falls to G64, buy 1-"8" train from bank for \$800 (\$88 GM&O treas, \$712 from MF, selling 1-SP for \$275) - SP prices remains at B275. 4-trains are removed.

SSW: Play #25(w) in G16. Run J3*-M2-M6-J5-B11 (\$280). Withhold - stock to E55y. Buy 8-train (-\$800).

KATY: Play #14(se) in D5; run B11-J5-J3-M2-N1* (\$290); pay divs (CB +\$116, CH & KATY +\$58, PB & MF +\$29); stock to G55y.

OR 7c:

SP: Play #14(ne) in L11, run train: N17*-M20-L11-M6-J5-B11 for \$320, pay dividends! (MF +\$160, PB +\$64, CB & SP +\$32, stock moves to B300).

AT&SF: Play #170(sw) in C18. Run C18-B11-J3-M2-N1* (\$290). Pay (CH +\$232, PB & MF +\$29). Price to C225.

FW&D: Play #9(sw) in K12 and #8(nw) in J13. Run A2*-D5-F5-J3-J5-M6 (\$290). Pay dividends (PZ +\$203, CB +\$58, FWD +\$29), price to E140.

T&P: Play #40(e) in L3; run N17*-M20-L11-M6-J5 (\$260); pay divs (CB +\$156, CH & MF +\$26, T&P +\$52); price to B140.

SL&SF: Lay #23 in L17. No train, no run, no dividend. Price drops to D100. Buy 8-train from Bank (SL&SF -\$723, PB -\$77).

SL&SF Destination Run: Lay Destination Token. Run E12-H13-H17-K16-N17-M20-M22* (\$330). Pay dividends (PB +\$132, SL&SF +\$66, MF +\$33). Price back to D110.

MP: Lay #8(ne) in C20 and #9(ne) in B21. No train, no run, no dividends. Price to B90. Buy 10-train from bank for \$950 (\$343 from MP, \$607 from CH).

IC: Lay #8(se) in I12 and #9(sw) in F17. Run J3-J5-M6-L11-K16-M20 (\$240). Pay dividends (PZ +\$144, IC +\$72), price to C90. Buy 5-train from SSW for \$507.

GM&O: Lay #45(e) in L17, run K16-N17-M20-L11-M6-J5-J3-B11 (\$350), pay dividends! MF & GM&O +\$105, CH +\$35, price moves to G68.

KATY: Lay tile #26(sw) at I4; place token in C18 (-\$100); run B11-J5-J3-M2-N1* (\$290); pay half dividends (CB +\$56, CH +\$28, PB & MF +\$14, KATY +\$178 total); stock remains at G55y; buy 10-train (-\$950).

SSW: Lay #24(sw) in K6. Run B11-E12-H13-L11-M6-M2-J5-J3* (\$390). Withhold. Price to E50g.

SR 8

Hanna sells 1 T&P, buys SP (+\$140-300). SP sold out!

Bailey price-protects (-\$140).

Hanna passes. Zieske buys SL&SF from pool (-\$110).

Bolduc buys Pool IC (-\$82).

Frueh & Bailey buy 1 SL&SF (-\$110). SL&SF sold-out!

Hanna passes. Zieske reissues SSW share (at 72).

Bolduc buys 1 TP (-\$100).

Frueh buys SSW share (-\$72). SSW sold-out!

Bailey buys share of MP from IO (-\$100).

Hanna passes. Zieske buys and sells a T&P (-\$100+140 profit).

Bailey price-protects (-\$140); T&P sold-out.

Hanna passes. Zieske buys 1 MP (-\$100).

Bolduc buys pool GM&O (-\$68).

Frueh buys IC from IO (-\$100).

Bailey & Hanna pass. Zieske has FW&D redeem share of itself from PZ (\$140).

Bolduc buys 1 MP (-\$100).

Frueh ...

PLAYER STATUS: (Cert Limit = 13)

Bailey: \$625, 8* TP, 4* KATY, 1 SP, 2 FW&D, 1 SL&SF (12+3)

Hanna: \$666, 8* AT&SF, 5* MP, 2 KATY, 2 SSW, 1 GM&O, 1 SP (13+4)

Zieske: \$1148, 6* FW&D, 6* IC, 5* SSW, 1 SL&SF, 1 MP (12+4)

Bolduc: \$169, 4* SL&SF, 1 KATY, 1 AT&SF, 2 SP, 1 SSW, 1 IC, 1 T&P, 1 GM&O, 1 MP (10+2)

Frueh: \$220, 5* SP, 3* GM&O, 1 KATY, 1 AT&SF, 1 MP, 1 SSW, 2 SL&SF, 1 T&P, 1 IC (12+3)

CORPORATE STATUS:

Corp	Pres	Price	Par	IO	Pool	Hold	Cash	Dest	Trains	Tokens
SP	MF	B300	68	0	0	1	77	yes	6-	N1,M6,N17*,1
AT&SF	CH	C225	72	0	0	0	199	yes	5-	B9,B11,N1*,1
FW&D	PZ	E140	82	0	0	2	46	yes	6-	J3,A2*,1
T&P	CB	B140	100	0	0	0	585	yes	5-	J5,1,N17*
SL&SF	PB	D110	100	0	0	2	66	yes	8-	E12,H17,M22*,1
MP	CH	B90	100	1	0	0	0	yes	10-	C18,B11,J5*,1
IC	PZ	C82	100	2	0	0	1	no	56	K16,1,D
GM&O	MF	G68	76	3	2	0	105	no	8-	M20,1,D
KATY	CB	G55y	68	0	0	2	42	yes	5,10	B11,B9,N1*,C18
SSW	PZ	E50g	72	0	0	0	1129	yes	8-	H17,E12,J3*

Bank has \$6,920.

Available Trains: 12's**Available Tiles:**

Yellow: 1(1), 2(1), 3(2), 4(5), 5(1), 6(2), 7(6), 8(1), 9(9), 55(1), 56(1), 57(3), 58(4), 69(1)

Green: 14(1), 15(2), 16(2), 17(2), 18(2), 19(2), 20(2), 23(3), 24(2), 25(1), 26(1), 27(2), 28(2), 29(2), 141(1), 142(2), 143(1), 144(1)

Brown: 39(1), 41(2), 42(3), 43(2), 70(2), 145(2), 146(2), 147(2), 170(0).

Grey: 172(1)





SILVERTON

Turns 5B-6A



Anderson declines #30. Zieske declines #75, but accepts #44 (-\$400).

PLAYER STATUS:

#1: Denver, Cary Nichols, \$400, S+2,S,P,P, #14(2 Ag), #18(1 Ag, D), #65(, #15(1 Ag), #16, #56(3 C), #66, #103
 #2: Denver, Wayne Morrison, \$750, S+1,S,P+1,P, #57(11 C), #6(0.5 Au), #104, A3, A2
 #3: El Paso, Debbie Anderson, \$1,625, S+1,S,P+1,P, A20, #83 (5 Cu), #78(1.5 Ag), #38
 #4: SLC, Paul Zieske, \$10,200, S,S,P+2,P, #51(8 C), #53(10 C), A5, #35, #55, #44

AVAILABLE CLAIMS:

30 Steamboat Springs (L: \$400/\$250)
 75 White Oaks (Au: \$500/\$250)
 90 Mc Gaffey (L: \$200/\$150)
 The Deck

54 Bowie (C: \$400/\$200)
 84 Lordsburg (Cu: \$700/\$200)
PAX: A1, A4, A6, A19, B7, B9, B10, B22

Turn 5b

#1: No ops. Deliver 4 Ag from #14, 15, & 18 to Denver (+\$12,000).
 #2: Operate A2 (+\$250) & A3 (+\$400). No deliveries.
 #3: Operate A20 (+\$300), #78 (-\$200: 9 = 1 Ag), #83 (-\$250: 6 = 1 Cu), #38 (-\$150: 5+6 = 3 L). Deliver 6 Cu to EP (+\$6,000).
 #4: Operate #51(-\$100: 6 = 2 C); #53(-\$100: 9 = 3 C), A5 (+\$100), #44 (-\$100, 6+6 = 5 C). Deliver 10C from #53 to SLC (+\$8000).

The Market: (IDN = 2)

Au: 6 + (0x4) = 6 = -1 6000	EP L: 5 + 0 - 2 = 3 +2 800
Ag: 7 + (4x2) - 2 = 13 -4 2000L	Den C: 4 + (0/2) - 2 = 2 +2 300
Cu: 1 + 6 = 7 -1 1000u	SLC C: 5 + (10/2) - 2 = 8 NC 500
Den L: 11 + 0 - 2 = 9 -2 300	Pueb C: 8 + 0 - 2 = 6 NC 200
SLC L: 4 + 0 - 2 = 2 +2 1200	SF C: 6 + 0 - 2 = 4 +1 400
Pueb L: 9 + 0 - 2 = 7 -1 200	EP C: 9 + 0 - 2 = 7 NC 300u
SF L: 7 + 0 - 2 = 5 +1 800	

DEPLETIONS: #10, #18, #43.

Turn 6a

#1: No prospect. Survey Leadville-Aspen (-\$1800).
 #2: No Prospect, no survey.
 #3: Prospect Deck (#62, #67). Survey Lamy-Santa Fe (-\$300) and Santa Fe-Taos (dr = 7; -\$1000).
 #4: Prospect #30 (-\$400) and the Deck (#79). Survey Steamboat Springs-Walden (-\$1200) and Bridgeland-Price (-\$1100).

PLAYER STATUS:

#1: Denver, Cary Nichols, \$10,600, S+2,S,P,P, #14, #65(, #15(, #16, #56(3 C), #66, #103
 #2: Denver, Wayne Morrison, \$1,400, S+1,S,P+1,P, #57(11 C), #6(0.5 Au), #104, A3, A2
 #3: El Paso, Debbie Anderson, \$6,025, S+1,S,P+1,P, A20, #83, #78(2.5 Ag), #38(3 L)
 #4: SLC, Paul Zieske, \$15,300, S,S,P+2,P, #51(8 C), #53(3 C), A5, #35, #55, #44 (5C)

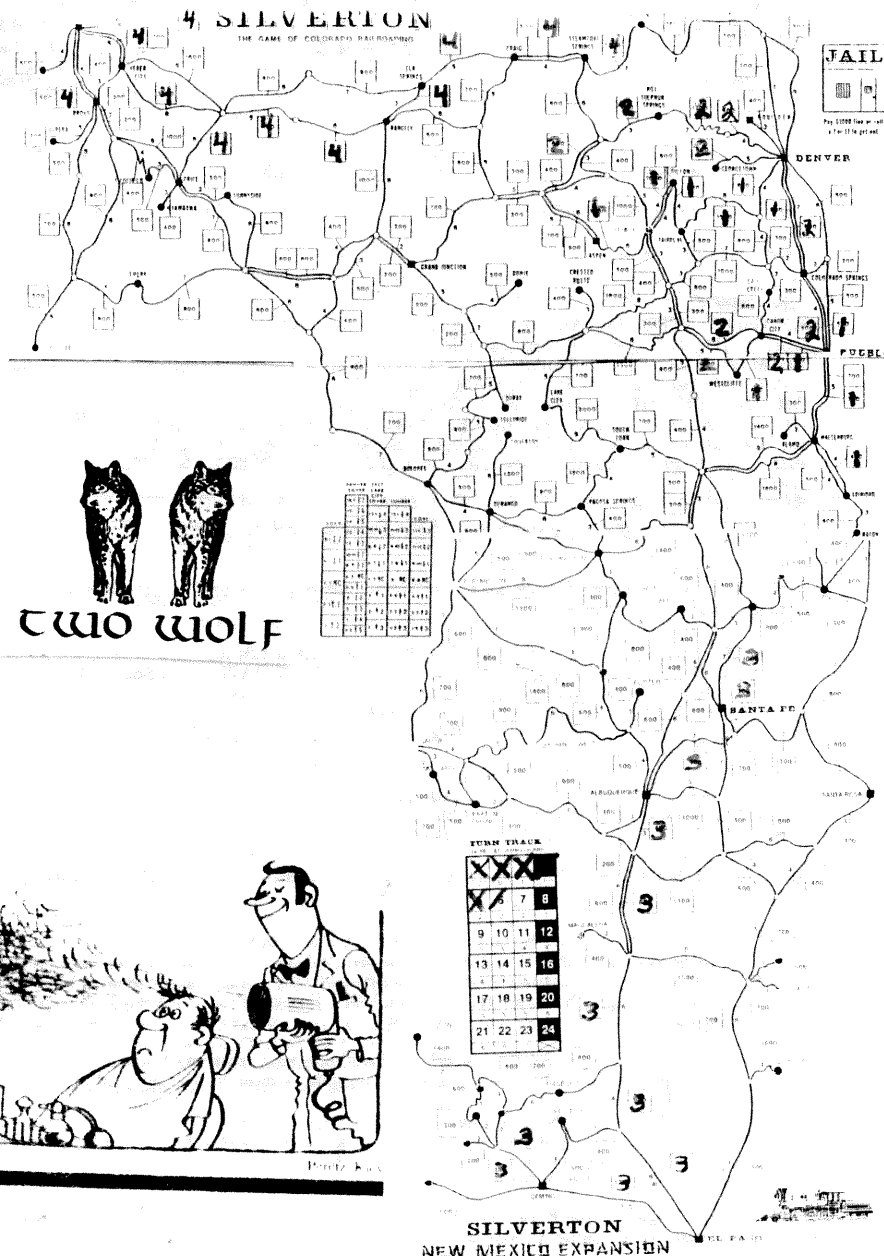
AVAILABLE CLAIMS:

3 Dillon (Au, \$600/\$200)
 62 Canon City (C: \$200/\$100)
 75 White Oaks (Au: \$500/\$250)
 84 Lordsburg (Cu: \$700/\$200)
PAX: A1, A4, A6, A19, B7, B9, B10, B22
 The Deck

54 Bowie (C: \$400/\$200)
 67 Trinidad (C: \$300/\$150)
 79 Hillsboro (Ag: \$300/\$150)
 90 Mc Gaffey (L: \$200/\$150)
 The Deck

Due next times are your orders for Turn 6 operations and deliveries and Turn 7 prospecting and surveying. Wayne should watch his expenditures this turn.

LEGEND: Claims in **bold** are unworked. Underlined depletions, Leadville. Ag = silver, Au = gold, C = coal, Cu = copper, L = lumber or lower, m = middle, PAX = passenger, u = upper.





HISTORY OF THE WORLD

KOKKAS



The Cast:

Dave Anderson: Orange
Cary Nichols: Azure

Kevin Wilson: Green
Rudy Zodda: Purple

Laird Khaoz: Ebony
Wayne Morrison: Red

Optionals: Preservation of Culture, Fortresses, Persistence of Culture, and US Navy are in play.

Score (VP/SP): R(141/49), E(127/53), P(117/57), A(96/59), G(107/64), O(169/70)

The Board:

AI: Hon(C), NEP(3), Pin; **AII:** Gol(c,f); **AIII:** Cre, Mor(c); **AIV:** Cau, ESt, Hok(2), Kor, Man(2); **AVI:** Che(C), GPC, Mek(OM), SiK, Sze, Yan(OM).
EI: Mal(c,f); **EV:** CEu(2), Dnt(2), PPI(3, RM), WSt; **EVI:** EAn(EM), EDe(EM), EGh(OM), GaD(EM), GaV(C, EM), Hin, Lin(RM), PSD, Uln(RM), Zag(EM).
GII: GPI, PSb; **GIII:** Alb; **GIV:** Dan(2); **GVI:** Con, Sha, Sib, Wlb(c).
OI: Lib; **OII:** LT(c,f), UN(c,F); **OIII:** Eln; **OIV:** Yel(PM); **OV:** Mon, Tar(PM), Wei; **OVI:** Cey, CMA, Dal, Eaf, Mad, NAn, Nap, NGa(c), Pat, Pyr(C, OM, Architecture), SAF, SAn, WIn.
PIII: Hig(c,f); **PIV:** SAp(c, GM); **PV:** LRh; **PVI:** Bal, Lev, MTI, Nil(GM), Nub, Pal, UTI(OM), WAn(C, PM).
RI: CAm(C), Gut; **RV:** BSb, Ire, Sca, WGa; **RVI:** Tur(c, Science), WDe.
Fleets: Atl(GOR), Bla(P), BoB(E), Car(G), EMS(P), Ind(O), Nth(R), SCS(A), SoJ(2A), WMS(G).

EPOCH VII

Red holds. Ebony holds. Purple passes to Green. Azure passes to Orange. Green passes to Purple. Orange must pass to Azure.

RUSSIA (R): Play "Weaponry". Play 1A.C @ NEP (-3Al); 1A @ ESt (6+1.3:5 -1AIV), Wei (4+1.3:4.1 -1OV), Tar (6+1.5:2 -1OV), Yel (3+1.1:1, IOV), GPC (6+1.5:6 -1AVI); 1F @ SoJ (6+1.2:3; 5+1.5:6; 6+1.2:5 -2AF); 1A @ BSb (-1RV), NGa (5+1.4:6.1; 2+1.2:2.1 -1OVI,c); 2A @ CMA (2+1.1:4; 4+1.1:5; 6+1.6:3 -1RVII, IOVI); 1A @ Pyr (3+1.2:5.4 -1RVII). VP: 141 + Science(2) + C(2x2) + c(1) + M(2) + S(2) + China(P=3) + India(P=3) + S Eur(P=2) + N Eur(D=8) + Eurasia(D=4) + N Amer(P=3) + S Amer(P=2) = 177.

MANCHU DYNASTY (C): Play 1A.C.GM @ Man (2AIV r-Kor); 1A @ GPC (4.3:2.1 -1RVII & -1RF @ SoJ), Che (6.5:6; 6.4:6; 6.3:4 -1AVI,C +c); 2A @ Wei (2.1:5; 6.1:1 -1GVII, 1RVII); 1A @ Tar (3.1:1); 1F @ SCS (6.1:6; 2.2:4 -1GF); 1A @ Yan (4.3:3 -1AVI), SiK (5.4:1 -1AVI); 2A @ Mek (4.4:6.1; 5.4:5.4; 5.5:3.1 -1GVII, 1AVI); 1A @ Mal (5.2:6+1 -1GVII). VP = 107 + C(1x2) + c(2) + M(1x2 +3) + S(2) + N Afr(P=1) + China(D=6) + S Eur(P=2) + N Eur(P=4) + SE Asia(P=2) + Eurasia(P=2) + N Amer(P=3) + SS Afr(P=2) = 140.

NETHERLANDS (O): Play "Naval Supremacy". Play 1A.C @ LRh (-1PV), 1F @ Nth (4+1.1:3 -RF), 1A @ Dee, GLa; 3F @ WMe (3+1.2:4; 2+1.2:6; 2+1.1:5; 3+1.2:4; 6+1.3:4 -2OF,GF); 1A @ Sha (3.1:6.1 -1OVI). VP = 169 + Architecture(1) + C(2x2) + c(3) + M(1x2) + S(2) + Mid E(P=2) + N Afr(P=1) + India(P=3) + S Eur(P=2) + N Eur(P=4) + SE Asia(P=2) + Eurasia(P=2) + N Amer(D=6) + S Amer(D=4) + SS Afr(D=4) = 211.

Somewhere in a Castle in Holland: I, David von Frankenstien....no thats Frankenstein. Have sent my monster to conquer more of the world. I-gor did you get my monster the brain of Julius Ceaser or Darius or Genghis Khan?

I am sorry. The world was fresh out of the those type of minds. !!!

I, hesitated and asked. If it was not one of those great minds that I put in as my monster leads my troops. What mind did I put in my monsters brain.

The chaps name was A.B. Normal, yes thats the man.

The world is ravaged by the Ebon Legions, showing no mercy they trample all in their wake. In every nation, the news is the same: thousands of armored automatons in black conical helmets, their heavy-footed synchronus marching interrupted only by their periodic exclamations of "WE COME FROM FRANCE!!!"

FRANKE (D): Play "Civil Service" and "Elite Troops". Play 1A.C @ WGa (-1RV); 1F @ Atl, Pac, Ind; 1A @ New, Aus, WGH, App, Bra, NGa(4.2.1:2 -1RVII), CEur(-2EV), LRh(6.4.1:1 -1OVI,C +c), BSb(4.3.2:3 -1RVII), NEP(5.3.2:1 -1RVII,C +c), Cey(5.3.2:5.3; 3.2.1:3.2; 6.3.3:5.1 -1OVI), WDe(6.5.2:2 -1RVII), Hok(3.3.1:6.1 -1EVII). VP = 127 + C(2x2) + c(3) + M(6x2 +4) + S(1) + Mid E(P=2) + India(C=9) + N Eur(D=8) + SE Asia(P=2) + Eurasia(D=4) + N Amer(P=3) + S Amer(P=2) + Aus(C=3) = 184.

The 9th wonder of the world, the Ebon Frog, carved from a 100' obelisk of pure obsidian, is erected in Paris to showcase the conquests of Napoleon the Black.

BRITAIN (A): Play 1A.C @ Alb (-1GIII), ...

Score (VP/SP): O(211/78), E(184/68), R(177/61), G(140/76), A(96+/79), P(117/57)

The Board:

AI: Hon(C), Pin; **AII:** Gol(c,f); **AIII:** Cre, Mor(c); **AIV:** Cau, Hok(2), Kor(3); **AVI:** Sze.
EI: Mal(c,f); **EV:** Dnt(2), PPI(3, RM), WSt; **EVI:** EAn(EM), EDe(EM), EGh(OM), GaD(EM), GaV(C, EM), Hin, Lin(RM), PSD, Uln(RM), Zag(EM); **EVII:** App, Aus, Bra, BSb, CEu, Cey, LRh(c), NEP(c), NGa, New, WDe, WGa(C, EM), WGH.
GII: GPI, PSb; **GIII:** Alb; **GIV:** Dan(2); **GVI:** Con, Sha, Sib, Wlb(c); **GVII:** Che(c), GPC, Man(C, GM), Mek(OM), SiK, Tar(PM), Wei, Yan(OM).
OI: Lib; **OII:** LT(c,f), UN(c,F); **OIII:** Eln; **OV:** Mon; **OVI:** CMA, Dal, Eaf, Mad, NAn, Nap, NGa(c), Pat, Pyr(C, OM, Architecture), SAF, SAn, WIn; **OVI:** Dee, GLa.
PIII: Hig(c,f); **PIV:** SAp(c, GM); **PVI:** Bal, Lev, MTI, Nil(GM), Nub, Pal, UTI(OM), WAn(C, PM).
RI: CAm(C), Gut; **RV:** Ire, Sca; **RVI:** Tur(c, Science); **RVII:** CMA, ESt, Yel(PM).
Fleets: Atl(EGOR), Bla(P), BoB(E), Car(G), EMS(P), Ind(EO), Nth(O), Pac(E), SCS(A), WMS(O).

GAME OPENINGS ELSEWHERE

BLUT UND EISEN (Tom Butcher): Openings in 1826, AFTER THE HOLOCAUST, 18EU, 1856, 1835 1830 Reading/Coalfields, 1829 S (experimental rules) and whatever you may want to GM. Sub fee: 90¢ to \$1.20 an issue depending on size. Last issue received: #129, deadline 26 Nov 07.

CHEESECAKE (Andy Lischett): **DIPLOMACY**. No game or sub fee. Last issue received: #275, 12 Sep 07, deadline 17 Oct 07.

ETERNAL SUNSHINE (Doug Kent): **DIPLOMACY** and **BALKAN WARS VI**. Last issue posted: #10, 1 Nov 07, deadline 28 Nov 07. <http://www.whiningkentpigs.com/dw/eshtml10.htm>

GRAUSTARK (John Boardman): Standby players for **DIPLOMACY** wanted. Game fee/sub for starting players \$35 for duration of the game or \$15 for 10 issues. Last issue found: #782, 29 Sep 07, deadline 2 Nov 07.

S.O.B. (Chris Hassler): Openings in **DUNE**, **GUNSLINGER**, **KREMLIN**, **SILVERTON**, **MERCHANT OF VENUS**, **ROBO RALLY**, **HISTORY OF THE WORLD**, **INDUSTRIAL WASTE**, and **OUTPOST**. Sub fee: \$2/issue. Last issue received: #139, Oct 2007, deadline 20 Nov 07. See <http://homepages.roadrunner.com/sobhome/index.html>

WESTERN FRONT (Brad Martin): Openings in **ACQUIRE**, **BRITANNIA**, **DARK CONTINENT**, **DIPLOMACY** (Fog of War), **EMPIRE BUILDER**, **EURORAILS**, **FAIR MEANS OR FOUL**, **HACIENDA**, **LORDS OF THE SIERRA MADRE**, **MACHIAVELLI**, **MONTGOLFIERE**, **PAX BRITANNICA**, **PRINCES OF FLORENCE**, **PUERTO RICO**, **RAILWAY RIVALS**, **REPUBLIC OF ROME**, **RUSSIAN CIVIL WAR**, **SANTIAGO**, **SCHLOBINSKI**, **SETTLERS OF CATAN**, **SHANGHAI TRADER**, **TIKAL**. Sub fee: free. Last issue received Oct/Nov 07, #90, deadline 26 Nov 07. See <http://groups.yahoo.com/group/wfront>

ON DECK



1835: Hanna, Zieske
AGE OF RENAISSANCE: Copeland
ATTIKA: Barrett
BALKAN WARS: K Wilson, Dave A
CIRCUS MAXIMUS: Nichols, Zieske, Fryling (need 1 to 7 more)
COLONIAL DIP: Burgdorf, Copeland, Nichols, Dave A (need 3 more)
EVO: Barrett
GUNSLINGER: Scott, Fowble, R Fisher, need 4 or 5 more
LIFT-OFF!: York, Dave Anderson
MAGIC REALM: Butitta, Deb A, Teh (need 1-5 more)
RUSSIAN CIVIL WAR: Scott, Martin
SAMURAI (AH): Copeland
WIZARD'S QUEST: Crowe(?), Fisher, Lenoir, Teh(?), Anderson?

OTHER POSSIBILITIES: 1829 (N OR S), 1830, 1856, 1870, 4000 AD*, AIR BARON, BRITANNIA II, CIRCUS IMPERIUM, CIRCUS MINIMUS, DOWN WITH THE KING, GODSFIRE, KAMAKURA, MONSTERS RAVAGE AMERICA, PLANET MINERS, SAMURAI, STELLAR CONQUEST, TITAN, *Guest GM

OUR SUBSCRIBERS

Dave & Debbie Anderson, 20832 Tuck Rd, Site 32, Farmington Hills, MI 48336; (248)473-7482; ravenclawnerdz@sbcglobal.net
 Christopher Bailey, 264 Fifth Avenue, Apartment 3C, New York, New York 10001; (917) 553-0070; christopher_bailey@yahoo.com
 Alan Bargender, alanmb777@hotmail.com
 Paul Barrett, UK; pdb@hiraganadragon.plus.com
 John Boardman, 234 East 19th St, Brooklyn, NY 11226-5302
 Martin Burgdorf, UK; mjb@astro.livjm.ac.uk or martin_burgdorf@hotmail.com
 Tom Butcher, 2129 Pinebrook Trl, Cuyahoga; thomas-butch@sbcbglobal.net
 John Butitta, 339 Ninth, Neenah, WI 54956; (414) 725-7218; docjob@tds.net
 Rick Copeland, 1531 Pack Horse Rd, Winchester, VA 22603; (540) 888-4420; cope655321@topofva.net
 James Curtis, james2c@aol.com
 Bob Dowrey, 76 Potter Ave., Orchard Park, NY 14127; dowreyhome@adelphia.net
 Ron Fisher, 210 Normandy Dr, Wilmington, NC 28412; (910) 395-8330; skylark3@charter.net
 Mark Fruch, 1128 Olympus Dr, Naperville, IL 60540; (630) 357-7780; mark_frueh@msn.com
 Jim and Marcia Fryling, 5444 Bonnie, Kentwood, MI 49506; james_fryling@cornerstone.edu
 Tim Haffey Sr, 810 53rd Ave, Oakland, CA 94601; (510) 536-3513; trhaffey@yahoo.com
 Chuck Hanna, 379 Wilett Ct, Severna Park, MD 21146-1912; (410) 544-3077; channa76@yahoo.com
 Chris Hassler, 2000 S Armour Ct, La Habra, CA 90631; chassler@roadrunner.com
 Tom Howell, 365 Storm King Rd, Port Angeles, WA 98363; (360) 928-9698; off-the-shelf@olympus.net
 Doug Kent, 11111 Woodmeadow Pkwy #2327, Dallas, TX 75228; doug@whiningkentpigs.com
 Laird Khaoz, 20832 Tuck Rd, Site 32, Farmington Hills, MI 48336; kbloodcrow@yahoo.com
 Andy Lischett, 2402 Ridgeland Ave, Berwyn, IL 60402
 Brad Martin, Australia; westfront@hotmail.com
 Wayne Morrison, LTSI-ASAC Khamis 05267, 7150 Troy Hill Dr, Elkridge, MD 21075; thomascat_ksa@yahoo.com
 Cary Nichols, 756532-938 S FM 1673, Snyder, TX 79549-8812
 Bill Salvatore, Salvatore.Bill@bls.gov; sociable.strategist@verizon.net; LexWordsmith@gmail.com
 Paul Saunders, 6 North Hill Dr, Carriere, MS 39426, (601) 798-2347; paul_saunders@bellsouth.net
 Mike Scott, 4040 E. Piedmont Dr, Space 61, Highland, CA 92346; (909) 864-4343; mikemag2@juno.com
 Jack & Rose Shacklett, 365 Hobbs-Reesor Rd, Vine Grove, KY 40174; (502) 828-4281; pilotshack@yahoo.com
 Robert Skynner, thebagge@yahoo.co.uk
 Gina Teh, lone_hammy@yahoo.com.sg
 Kevin Wilson, 18623 Santa Maria Dr., Baton Rouge, LA 70809-6702; (225) 751-3857; ckevinw1@cox.net
 Andrew York, PO Box 201117, Austin, TX 78720-1117; wandrew88@gmail.com
 Paul Zieske, 3501 Keenan Lane, Glenview, IL 60025; (847) 498-9237; zieskep@juno.com
 Rudy Zodda, 7 Hansen Ave, New City, NY 10956; (845) 708-9056; rzodda@aol.com

DEADLINE FOR MOST GAMES IS 1800 CENTRAL TIME 7 Dec 07

The Bottom Line

This is **BORIS THE SPIDER**, a 'zine dedicated to the play of multiplayer games. BORIS is usually published following the first Friday of the month by Paul Bolduc, 203 Devon Ct, Ft Walton Beach, FL 32547-3110 and currently has a subscription price of \$12.75 for 12 issues in hardcopy in the US. A hardcopy sub will also include an e-mail sub. Make checks payable to "Paul Bolduc". BORIS can be reached at (850) 863-9081, or prbolduc@aol.com. If phoning, expect to be greeted by an answering machine. If we're here, not engaged in an epic computer battle or enthralled in baseball, hockey, or college football, and recognize your voice, you may get to talk to a real human, so don't despair and hang up upon hearing our recorded message (it changes every power outage). Visit the BORIS Website at:

<http://hometown.aol.com/prbolduc/boris/borishome.htm>



MACCHIAVELLI

Scenario 2

Spring 1499

2008C
pw10

Reminder: Only Rules sections 1-10 & 17 are in effect. FI/P and T/V are considered single countries for building and conquest purposes.

Ragnociti: 'Twould appear that the beginning of the 16th Century will be marked by violence throughout the Italian peninsula as the outbreak of hostilities this season surely will not cease ere that momentous day two years hence. Austria seeks to expand from her power base in the northeast as France tries to do likewise from the northwest, but France has the added complication of outposts in the south of Italy far from her homeland. The ungody Turko-Venetian alliance holds the east and south, leaving the corrupt Medici family businesses - the Papacy & Florence - very much in the middle.

TROOP MOVEMENTS:

Austria (Barrett): A Aus-Sla, A Mes-Pal, [A Swi-Tyr], A Tyr-Car, F Pal-TS, F Sar-WM;
 Florence/Papacy (Scott): A Are-Sie, A Bol-Man, A Flo-Bol, A Per-Spo, [A Rome-Cap], [F Anc-UA], F Pisa-Luc;
 France (Nichols): A Avi S A Salz-Tur, A Bari-Aqu, [A Mil-Tyr], [A Nap-Cap], A Salz-Tur, F Gen-LS, F Mar-GoL;
 Venice/Turks (Anderson): A Alb-Rag, A Pad-Fer, A Tre-Fri, [F Dal-UA], F Dur-IS, F Tun-CM, G Ven = F).

Due next time are orders for Summer 1499.

EMBASSY BEAT

Austria to all: The Austrian Royal family sends its envoys to France, Venice and Rome in an attempt to prevent bloodshed in Italy. If any other party is interested in peaceful "expansion" then Austrian is keen to know.

Solution 2 to September's Puzzle

At the first meeting, the distance traveled by two ferries equals the width of the river. When they have landed, they have traveled a distance 2 times the width; at the second meeting, they have traveled 3 times the width. Therefore at the second meeting, each ferry must have traveled 3 times as far as the first meeting. Thus Chem has traveled 156 yards, which must be 20 yards more than the width of the river - 136 yards.