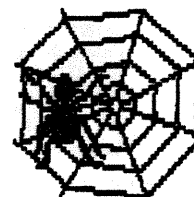


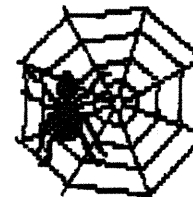
BORIS THE SPIDER	
c/o 203 Devon Ct	
Ft. Worth, TX 76102	
http://members.con.net/boris_spider/Borishome.html	
TABLE OF CONTENTS	
Addresses	p 18
BLACKBEARD	p 8
BRITANNIA	p 6
DIPLOMACY	
XIX	
MACHIAVELLI III	p 2
DUNE	p 7
Game Openings Elsewhere	p 19
1826	pp 16-7.2.3.15.9
KINGMAKER	p 4
KREMLIN	p 5
MERCHANT OF VENUS	pp 12-13
On Deck	p 18
RAIL BARON	pp 14-15
SILVERTON	pp 10-11



VOLUME IX, #18

BORIS THE SPIDER

A Journal of Duplicitous Doings,
Raw Power, and Naked Greed
"Oh, what a tangled web we weave
When first we practice to deceive!"
--Sir Walter Scott--



12 Jun 08

274

Bailey Wins RAIL BARON; Ms Nar Wins "Graw"

Congratulations to Chris Bailey on winning our first official game of *RAIL BARON* (we'd run an off-issue pbem game back in 2000 or so). He did so with less cash than Ron Fisher, who never got a good close destination in five tries. Meanwhile, Ms Nar, having assumed Paul Barrett's abandoned position, beat Dave and Debbie Anderson to \$2000 by a tempo, i.e., a partial turn, to win our third game of *MERCHANT OF VENUS*.

We need to do some gamestarts. Candidates are 18xx, *WIZARD'S QUEST*, *GUNSLINGER*, *PUERTO RICO*, and, *HISTORY OF THE WORLD*. Sign up soonest. *RAIL BARON* and *MERCHANT OF VENUS* too, of course.

IMMEDIATE OPENINGS:

BLACKBEARD: Position #1 is available (Tew (2nd Pirate), no KCs)

DIPLOMACY: Italy may be available.

KREMLIN: PB position is available.

RUSSIAN CIVIL WAR: Position A is available in "Culloden".

BORIS'S BULLETIN BOARD

THOUGHT FOR THE MONTH: "When one ceases from conflict, whether because he has won, because he has lost, or because he cares no more for the game, the virtue passes out of him." -- Charles Horton Cooley

PICTURE OF THE MONTH: The lighthouse at Cape San Blas, Florida. Just one of the places my job has sent me. (And yes, I've climbed to the top -- twice).

NEW ON THE WEBSITE: We've added a link to *RUSSIAN CIVIL WAR* variant rules. The Hall of Fame page has been updated.

The Portland 18xx Con will be held 20-22 Jun 08, at the Hilton Garden Inn, Portland Airport. Hotel Rooms: \$96/night + tax. Call (503) 255-8600 for reservations. You must mention the 18xx tournament to get the discounted rate. Fee: \$20 per day at the door. Registration: Send a check along with your name, address, and e-mail address to: Dave Blanchard, 4844 NW Rainier Ct, Camas, WA 98607.

WARNING: The August deadline falls on 1 Aug and I'll be leaving for WBC on the morning of the 4th, which means the hardcopy has to be done by 1800 Sunday the 3rd so I can get it duped, collated, stapled, stamped and labeled early enough to get a good night's sleep before the 12+ hr drive of the first leg. That also means orders that don't meet the deadline may not be included, so don't be late

BOOS & KUDOS

The Madame Bolduc Press Excellence Award (and free issue) goes this month to Rick Copeland for his *BRITANNIA* press.

This month's Ms Nar Super-Sudsy Bomb is lobbed at Rick Copeland for late/NMR orders for "Boris XIX".

PERSONAL COMMUNICATION HERE (maybe):

Deadline for most games is 1800 CDT 4 Jul 08



Riots in Italy!! Austria Moves West! Spring 1984

XIX
2007B

MINAS MORGUL: Italy is the next heifer to be carved up and her inexplicable lack of orders this season could be fatal. Austria now occupies two of the Italian home centers and threatens the third. While the French are clearly joining in the kill, they may have to be satisfied with leftovers. Meanwhile, Russia's rogue fleet will need to find a center to base out of next turn or face elimination. The Germans have consolidated their forces, but have sacrificed their mobility to do so.

TROOP MOVEMENTS

Russia retreats A MOS to LVN. Austria builds A TRI. England builds F EDI, A LON, A LPL. Germany tears A RUH. Russia tears A SIL & A LVN. Turkey builds A CON.

AUSTRIA (Wilson): A Bud-Ser, A Vie-Tri, F Ion-Nap, A War H, A Gal-Bud, A Tri-Ven.

ENGLAND (Fisher): A StP-Lvn, F Swe-Bot, [F Den S F Eng-Nth], F Eng-Nth, F Edi-Nwg, A Lon H, A Lpl-Edi.

FRANCE (Anderson): A Bre-NAf, A Bel-Bur, F Mid C A Bre-NAf, [A Mar-Pie], F Wes S F Lyo-Tyn, F Lyo-Tyn.

GERMANY (Nichols): F Hol S A Ber-Kie, A Ber-Kie.

ITALY (Copeland): NMR! A Boh H(u), A Mun H(u), F Tun H(u), A Pie H(u), F Tyn H(u,r-???).

RUSSIA (Saunders): [F Kie-Den](r-???).

TURKEY (Fryling): A Ukr-Gal, A Mos-H, F Bul(ec)-Con, A Sev S A Mos, A Rum-Ukr, F Aeg H, A Con-Smy.

Orders in brackets fail; d = destroyed, NMR = no move received, NRR = no retreat received, r-??? = retreat to ???, u = unordered.

Italian F TYN must retreat oth or to ION, ROM, or TUS.

Russian F KIE must retreat oth or to BAL or HEL.

Due next time are orders for retreats and for Fall 1904. Need Press!

EMBASSY BEAT

Paris: The Italian Comminque of Fall 1903 must have been written by Piedmontian seperatists who are trying to continue to sew dissent amongst my allies. As my communication to start seperating the Italian and French armies and navies must have either fell on deaf ears in the Italian Ministry or was intercepted and never conveyed properly or the courier was stopped from making the delivery because of soaring gas prices and the increase in postage to 42 cents. The French Foreign Legion has been sent to North Africa to further clarify the situation for the Italian minister. Sincerely Yours, Frenchie dela Puke. Minister of Communiques and Master Wine Connisuer.

--"1826" (continued from p 17)

Paul: buy Paris from treasury (PZ:432-122=310, Paris:168+122=290)

Chris: pass. Chuck: buy Nord from treasury (CH:78-65=13, Nord:655+65=720)

Mark: Sell 1-Belge and buy Alsar from treasury (84+90-122=52) (Belge drops to D82 & Alsar: 31+122=153)

Paul: buy Ouest (PZ:310-110=200, Ouest floats with 330)

Chris, Chuck & Mark: pass. Paul: buy Paris from treasury (PZ:200-122=78, Paris:290+122=412)

Chris, Chuck & Mark: pass. Paul: buy Nord from pool (PZ:78-65=13)

All pass. Chris has priority

OR5a

P-O: Play tile #88(new:se-nw) in J6; run I7-G9 (100), I7-H6 (60) and I7-J6-K5-M3 (90); pay 25/share divs (CB:100+10=110, CH:25+13=38, PO:100+558=658); stock to B150; buy 6H train (658-300=358); buy back share from pool (358-150=208)

PHASE CHANGE: 2H trains rust; train limits are 3/1; Etat may form (but doesn't); first off-board values still apply; corporations started after this point are 10-share corps.

Paris: Ouest gives permission for Paris to play in G7, play #8 there (e-sw); run G9(w)-I7-H6-J6 (150); pay 15/share dividends (PZ:13+90=103, CB:110+15=125, Paris:412+45=457); stock to C135; buy 6-train (-300).

Alsar: Upgrade B12 w/tile #619(ne) - (new spokes to ne & sw); place Alsar token in C13 for 100; run trains - B8-B10-B12-C13-D14 (120) & K17-L14-N16 (100); payout 22/share dividends! Pup 52+88=140, CB 22+125=147 & Alsar 153-100+88=141; stock to C135; no train purchase.

GC: Play tile #15 in M13. Run N16-L14-K17 (100). Pay 20/share. (CH:38+60=98, CB:147+20=167). Price remains at C122. Buy no train.

--continued on p 3



MACHIAVELLI Austria Bribes! Spring 1501

2007C
pw10

Ragnociti: Austria has abandoned her outlying satrapies in favor of concentrating on preserving her key home provinces. France was the favored target this season, but is in no immediate danger. The Florentines have booted the Turks out of BOL, but, given the plethora of retreat options available to them, the Turks will be looting and pillaging for some time.

TROOP MOVEMENTS:

Austria (15+5d) maintains A HUN & VER (-6d). F/P (46d) maintains all then builds F PISA & A FLO (-33d). France (36d) maintains all and builds A AVI (-36d). T/V (54d) maintains all but F IST & F MES, builds A DAL & F VEN, and donates 5d to Austria (-41d).

Austria (Burgdorf, 14d): J (disband FRE A AUS -12d), A Ver-Carin, A Hun-Aus;

Florence/Papacy (Scott, 13d): A Sie-Per, A Cre B2, A Gen S F LS-Sav, A Aqu-Sal, F Anc-Aqu, F Pio S F Pisa-LS, A Cap S F Anc-Aqu, F Urb S A Flo-Bol, F LS-Sav, A Flo-Bol, F Pisa-LS.

France (Nichols: Od): [A Sav B1](r-???), [A Sla S A Aus-Hun](nsu), A Nap H, A Mil-Tyr, F Cor S F Mar-Gol, F Sar S F Mar-Gol, A Mon B1, F Mar-Gol, [A Aus-Hun](nlo), A Avi H;

Venice/Turks (Anderson, 13d): [A Bari-Aqu], A Fer-Man, A Trent S AUS A Ver-Carin, F LA S F UA-Anc, F Pal S F TS, F UA-Anc, [A Bol-Urb](r-???), A Car-Sla, A Pad-Tre, F TS H, A Dal-Cro, F Ven-UA.

Autonomous: Cre(d) Luc Mod Mon(b) Pav Sav Tur

French A SAV must retreat oth or to PRO.

T/V A BOL must retreat oth, into g, or to FER, LUC, MOD, or PIS.

Orders in brackets fail; nlo = no longer owned, nso = not so ordered, nsu = no such unit, r-??? = must retreat somewhere, u = unordered.

Due next time are orders for Summer 1501. And press!

EMBASSY BEAT

Venice: Venetian moneychangers were a buzz of the newest member: Austria to the Unholy Alliance. It was explained that investing in a ducat poor country like Austria may not be wise but that it holds limited benefits, but, in the end of all things it may pay off in rich gratitude later. As the press conference broke, a Frenchman John Valjean was arrested for stealing bread. Authorities have handed him over to French authorities and given the French a stern warning that if any bread is lost from Venetian coffers they will pay as well.

--"1826" (continued from p 2)

Ouest: Play #9 in H4 (e-w) & #58 in H2 (e-sw). Reach destination, but don't convert. No train, no run, no dividends, price to A100. Buy 6-train (-300).

Belge: Play tile #57 in C15(w-e) for F40; run train - B8-B10-B12-C13-C15 (130); payout 13/share dividends! Pup 140+52=192, CB 167+13=180 & Belge 295-40+52=307; stock to D90; buy 1-"6H" train for 300, treasury =307-300=7.

Nord: Play tile #619 in C11(sw; new track se&ne). Token in C11 (-80). Run G9-D10-C11 (110). Pay 11/share dividends. (CH:98+55=153, PZ:103+11=114). Price to F70. Buy two 6H-trains. (Nord:720-80-2*300=40)

OR5b

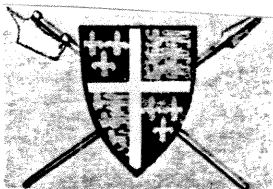
P-O: Play tile #204 in K5 (E-NW); run G9-H6-I7 (130) & G9-I7-J6-K5-M3 (160); pay 29 share (CB: 180+116=296; CH: 153+29=182; P-O: 208+145=353); stock to B165.

Paris: Play tile #8 in J2 (nw-e); run G9-H6-I7 (140) & G9-I7-J6-K5-M3 (170) - more than P-O due to mail company; pay 31 share (PZ: 114+186=300; CB: 296+31=327; Paris: 157+93=250); stock to C150; sell 3 treasury shares (250+450=700).

Alsar: Upgrade C15 w/tile #15(e) (new spokes to sw & se), run trains - B8-B10-B12-C13-C15 (140) & N16-L14-K17 (100); payout 24/share dividends! (Pup: 192+96=288, CB: 327+24=351, Alsar: 141+96=237); stock to C150b; buy "6H" from Belge for 236; sell 4 treasury shares (stock price remains @ C150b) (Treasury =237-236+600=601).

GC: Play tile #20 in M15(w; new track w-e). Run N16-L14-M13 (100). Pay 20/share dividends

--continued on p 15



KINGMAKER

"King of Pain"

Turn 36 Movement-Turn 37 Events

KOP

The Cast:

THE MAD HUNGARIANS (Dowrey): Fitzalan [30], Warden of the Northern Marches [150], Stanley [50], Earl of Richmond [40], Marshal of England [100], *Le Lucas*, Bouchier [10], Earl of Salisbury [30], Chancellor of Cornwall [150], Berkeley [10], Earl of Essex [20], Flemish Crossbowmen [20], Scrope [10], Clifford [10], Event cards (1), Crown Cards (3).

THE CALIFORNIA CONNECTION (Scott): Pole [30], Chancellor of England [50], Grey [20], Earl of Westmorland [40], Ipswich: Duke of York [30], Courtenay [30], Admiral of England [50], Lancaster [20], Event cards (5), Crown Cards (3).

KNIGHTS OF THE PRIVY POT (Deb Anderson): Mowbray [50], Treasurer of England [50], Hastings [10], Bishop of Carlisle [30], Bishop of Durham [30], Flemish Crossbowmen [20], Cromwell [10], Earl of Kent [30], Steward of the Royal Household [50], Scots Archers [20], Percy [100], Lieutenant of Ireland [250], Archbishop of York [30], Northampton [20], *Le Michael*, *Le Nicholas*, *Le Rose*, Beaufort [30], Constable of London [250], Carlisle, Newcastle. Event cards (2), Crown Cards (1).

THE STAFFORDSHIRE QUARTERSTAFFS (Shacklett): Stafford [30], Chamberlain of Chester [250], French Foot [100], Nottingham [50], Neville [50], Audley [10], Earl of Wiltshire [30], Roos [20], Herbert [10], Talbot [30], Greystoke [10], Irish Kerns [50], Event cards (4), Crown Cards (4).

WESTERN FRONT (Martin): Holland [10], Event cards (6), Crown Cards (4).

TURN 36

EVENTS: Courtenay & Ships to Penzance.

MOVEMENT:

MH: *Le Swan* is awarded to Stanley and moves from Berwick-S32-S31-S27-S22-S19. Fitzalan moves Li-Mh-Nb-Nc-Na. Berkeley et al. moves Pl-Pn-Oh-Og-Nc-Preston. Stanley and Bouchier move Dd-Da-Ea-Ff-Gj.

TCC: *Courtney & ships hold*. Pole, w/ Artie, Duke of York, Grey, Clifford, Scrope move Ns-Np-Ni-Nf-Nc-Preston.

KPP: *Le Michael*-S9-S10-S11-S12-Continent. *Le Nicholas* w/ Cromwell & Hastings move London-Estuary-S15-S12-Continent. Percy holds. Mowbray Denbigh-Lg-Kb-Ja-Ic-Ib.

SG: Audley and the boys move Jh-Ke-Ll-Lj-Mf-Me to join Stafford and they all have a feast..

WF: Holland moves Compton-Ah-Bc-Bb-Af-Ac.

Combat: (Catastrophe over) None.

CROWN DECK: MH got only card last turn; TCC will get the next one.

TURN 37

EVENTS:

MH: # 87, Plague @ Southampton (n/e).

TCC: #70, Plague @ Berwick (n/e).

KPP: #21, Parliament may be summoned by the Chancellor.

SG: #40, Embassy from Duke of Burgundy (n/e).

WF: draws a keeper _____.

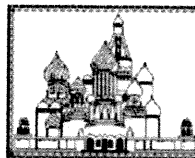
Due next: Pole's decision on Parliament. So orders for whether to attend Parliament (in Preston) if he does, orders for Movement 37 if he doesn't.

NOBLES: Audley, Greystoke, Herbert, Neville, Roos, Stafford, Talbot in Rhuddlan. Beaufort @ Scotland; Berkeley, Duke of York, Fitzalan, Grey, Pole @ Preston. Bouchier, Stanley in De. Courtenay in Penzance. Cromwell, Hastings, Percy on Continent. Holland in Ae. Mowbray in Ib.

SHIPS: *Le Christopher & Le Margarete* @ Penzance, *Le Lucas* @ Beaumaris; *Le Michael & Le Nicholas* @ Continent, *Le Rose* @ Scotland, *Le Swan* @ S19.

HEIRS: Reds: Margaret in Scotland w/ Beaufort; Edward of Wales in Beaumaris; Artie in Preston w/ Pole; Pretender [20] w/ Fitzalan @ Preston. Whites: George @ Rhuddlan w/ Audley, Edward III in Preston w/ Berkeley.

RIP: Henry VI, Richard of Gloucester, Edmund of Rutland, Richard of York, Edmund II of March.



KREMLIN

Interphase!

Year 6c



The Cast: (in Table order)

Dave Anderson, Decaying, Licentious Antiquarians (DLA): 1 card, 1 wave

Brad Martin, Western Front (WF): 2 cards

Doug Kent, Whining Kremlin Pigs (WKP): 2 cards

Paul Barrett, Politburo Bureaucrats (PB): 2 cards

Mike Scott, The California Connection (TCC): 3 cards

Cary Nichols, Re-Education Deployment Society (REDS): 2 cards, 1 wave

Politburo

Party Chief:	Strychnin (T)	68?©	TCC(6), REDS(4)
KGB Head:	Wasolin (Z)	55s?	TCC(4), REDS(2)
Foreign Minister:	Nogoodnik (V)	67+	WKP(10), WF(9)
Defense Minister:	Niewitko (D)	73	REDS(1)
Ideology Chief:	Protsky (U)	56w++	WKP(9), TCC(8), WF(2), REDS(1)
Industry Minister:	Purgemoff (F)	71	TCC(5), WKP(4)
Economy Minister:	Goferbok (C)	74	
Sport Minister:	Mischif (I)	68	

Candidates: HJLMY

People: NPQ SX

KREMLIN WALL: AEGKOR

Siberia: B(83++)NW(62)

6.9 INTERPHASE:

REDS: Reveals 2 IP on Goferbok and 1 IP on Strychnin. Adds 2 IP to Strychnin.

DLA: Places 2 IP on Nogoodnik and reveals another 9 IP to 10+.

WF: Places 1 IP on Nogoodnik, can't place a second, so draws a card.

WKP: Draws 2 cards.

PB: *NMR!* Draws 2 cards. GM randomly discards a card to get down to three.

TCC: Places 2 IP on Protsky.

Due next time are your orders for Year 7, Cure through Health Phases. Your cards are:

If you have more than 3 cards listed, you must discard down to 3.

Politburo

Party Chief:	Strychnin (T)	68?©	TCC(8), REDS(7)
KGB Head:	Wasolin (Z)	55s?	TCC(4), REDS(2)
Foreign Minister:	Nogoodnik (V)	67+	DLA(10+), WKP(10), WF(10)
Defense Minister:	Niewitko (D)	73	REDS(1)
Ideology Chief:	Protsky (U)	56w++	TCC(10), WKP(9), WF(2), REDS(1)
Industry Minister:	Purgemoff (F)	71	TCC(5), WKP(4)
Economy Minister:	Goferbok (C)	74	REDS(2)
Sport Minister:	Mischif (I)	68	

Candidates: HJLMY

People: NPQ SX

KREMLIN WALL: AEGKOR

Siberia: B(83++)NW(62)

LEGEND: s = strong, w = weak, + = sick, ++ = ill, ? = under investigation, © = taking the Cure.



BRITANNIA "Gawain" Turns XIII-XIV



The East
Copeland: Purple
Zieske: Green

Anderson: Red
Martin: Blue

TURN XIII

Board:

Welsh (0): 2A @ Gwent, Powyss.
Brigantes (2.5): 2A @ Strathclyde.
Picts (1): 2A @ Alban, Caithness, Dalriada, Galloway, Mar, Moray; 1A @ Dunedin.
Caledonians (0): 2A @ Orkneys.
Irish (1): 2A @ Gwynedd; 1A @ Clywd, Devon, Dyfed.
Norsemen (2): 1R @ Atlantic, Icelandic, Irish; 2A @ Skye.
Dubliners: 5A, 2R @ Irish.
Danes: 4R, 2A @ North; 3A, Bros @ Pennines; 2A @ N Mercia; 1A @ Avalon, Lindsey; 1R @ Frisian.
Saxons (2.5): 1A, Alfred @ Downlands; Edgar @???

Store: Green 85, Purple 66, Blue 65, Red 41.5.

DUBLINERS: 1st Wave: 1A Irish-Cumbria. 1A Irish-Cheshire. 5A Irish-Cheshire-York. 2nd Wave: 4A York-N Mercia (5,3,2,1:5,2 -1 each, Dane r-S Mercia).

All sing: Angles and Saxons and Danes, OH MY..... Angles and Saxons and Danes, OH MY.

DANES (0): Bros retire. Grow 3 pp, add 1A @ S Mercia. Move 1A Frisian-Channel-Cornwall, 2A Pennines-Cheshire (3,2:2 Dubliner r-N Mercia), 3A North-York (4,2,1:3 1 Dubliner r-Cumbria), 1A North-Frisian-Essex, 1A S Mercia-Essex, 1A North-Frisian-Suffolk, 1A North-Frisian-Norfolk.

SAXONS (2.5): Alfred dies of trenchfoot. Grow 0.5 pp. Add 1A & Edgar @ Downlands. Hold.

TURN XIII PP:

Green: Welsh (3), Caledonians (2), Danes(15)	= 20
Purple: Dubliners (7.5)	= 7.5
Blue: Picts (7)	= 7
Red: Brigantes (5), Irish (3), Saxons (1), Norsemen (2)	= 11

Store: Green 105, Purple 73.5, Blue 72, Red 52.5.

TURN XIV

Danes are King (+4 VP) and place bonus A @ S Mercia.

Store: Green 109, Purple 73.5, Blue 72, Red 52.5.

WELSH (0): Grow 1 pp. Hold.

BRIGANTES (2.5): Grow 1 pp. Add 1A @ Strathclyde. 1A Strathclyde-Lothian-Pennines (4:6 -Brigante).

PICTS (1): Grow 4 pp, but forcepool empty so can't add an army. 2A Caithness-Skye, 2A Alban-Skye (6,5,4,1:5,3; 6,6,6:5 -2 Picts, 2 Norsemen), 1A Moray-Caithness, 1A Mar-Alban.

CALEDONIANS (0): Grow 0.5 pp. Hold.

IRISH (1): Grow 3 pp. Add 1A @ Dyfed. 1A Clwyd-March. 2A Gwynedd-Clwyd.

NORSEMEN (2): No growth. 1A Irish-Icelandic-Hebrides. 1R Atlantic-Irish.

DUBLINERS: Grow 2 pp. ...

Store: Green 109, Purple 73.5, Blue 72, Red 52.5.

--continued on p 7



DUNE 6 Holds Tuek's Sietch! Nexus Turn 4d-5a



BOARD:

Atriedes (Wilson): 10T @ Arrakeen, 10R, 5L, 13S, (0/7) KH, 4C
Fremen (Anderson): 5T @ Seitch Tabr, 5T @ Habbanya Ridge Sietch, 7R, 3*R, 5L, 1S, 3C.
Guild (Nichols): 5T @ Tuek's Sietch, 1T @ South Mesa(s5), 2T @ Polar Sink, 1T @ Red Chasm, 1T @ Shield Wall(s9), 10R, 5L, 14S, 3C.
Harkonnen (Fisher): 6T @ Carthag, 4T @ Plastic Basin(s14), 1T @ Tuek's Sietch, 5R, 4L, 8C, 9S.
Spice: Red Chasm(6), Wind Pass North(6).
Storm: Sector 2
Tanks: B Raban, H 4T

TURN 4

4.5 Combat:

Tuek's Sietch: G (@) 5T vs H 1T. G plays Cheap Heroine, Lasegun, OS and dials 2; H plays Cheap Hero, Kulon, OS, and dials zero. G wins.

4.6 Spice Collection: A collects 2S for Arrakeen. H collects 2S for Carthag. G collects 2S from Red Chasm and 1S at Tuek's Sietch.

5.1 Storm: Moves 3 sectors to Sector 5, killing the G token in South Mesa.

5.2 Spice Blow: Habbanya Erg (8) and Shai-Halud at Wind Pass North, destroying the spice there. We have another Nexus. Alliances may be made.

Due next time: Orders for the Nexus.

BOARD:

Atriedes (Wilson): 10T @ Arrakeen, 10R, 5L, 15S, (0/7) KH, 4C
Fremen (Anderson): 5T @ Seitch Tabr, 5T @ Habbanya Ridge Sietch, 7R, 3*R, 5L, 1S, 3C.
Guild (Nichols): 1T @ Tuek's Sietch, 2T @ Polar Sink, 1T @ Red Chasm, 1T @ Shield Wall(s9), 10R, 5L, 16S, 2C.
Harkonnen (Fisher): 6T @ Carthag, 4T @ Plastic Basin(s14), 5R, 4L, 6C, 11S.
Spice: Red Chasm(4), Habbanya Erg(8).
Storm: Sector 2
Tanks: B Raban, G 5T, H 5T.

LEGEND: C = cards, L = leaders, R = reserve, S = spice, T = tokens, @ = aggressor

--"Gawain" (continued from previous page)

Board:

Welsh (1): 2A @ Gwent, Powyss.
Brigantes (0.5): 2A @ Strathclyde.
Picts (2.5): 2A @ Dalriada, Galloway, Skye; 1A @ Alban, Caithness, Dunedin, Mar, Moray.
Caledonians (0.5): 2A @ Orkneys.
Irish (1): 2A @ Clywd; 1A @ Devon, Dyfed, March.
Norsemen (2): 1R @ Icelandic, Irish; 1A @ Hebrides.
Dubliners: 4A @ N Mercia; 3A @ Irish, 2A @ Cumbria.
Danes: 6*A, Canute @ Frisian; 3A @ York; 2A @ Cornwall, Cheshire, Essex, S Mercia; 1A @ Avalon, Lindsey, Norfolk, Pennines, Suffolk.
Saxons (2.5): 2A, Edgar @ Downlands.



BLACKBEARD

Turns 188-194



THE CAST:

1. (?????) Tew: Sloop
2. (Zodda) Davis, Sloop
3. (Bargender) Vane**, Sloop
4. (Martin) Rackham, Schooner.

STATUS:

	Captain	Ship	Hex	Spd	Cbt	Not	Cun	Unr	NW	H1	H2	Hostage	Attk
2	Davis	Sloop	S19a	+3	5sc	29	5-2	1	889	--	--	1(11)	NPB
4	Rackham(d&r)	Scnr	J141	+3	3	16	(1)	7	0	200	40	--	BPN
4	Rhett*	KC	M22	5	8								
2	Maynard	KC	Box1	4	7sc								
3	Herdman	KC	T14	3	15								
2	Matthews	KC	CC20	2	7sc								
1	Tew	Sloop	K11	-3	4	2	1	6	0	10	--	--	S
3	Vane**	Sloop	M18	+3	6	5	0	5	08	--	--	--	--
4	Ogle	KC	DD20	3	14sc								

The Board:

Guvs: Pro: 35, 46, 53, 31, 41 Anti: 23, 24, 54, 64, 13
 Merchants: 31
 Warships: S8-5 @ M22, ??? @ D101 Destroyed Port: 14, 32
 Out-of-Play Pirates: Teach (#3), Portugese (#1), Taylor (#3)
 Letters of Marque: PFBP
 Safe Havens: Vane(Port Royal w/839 d)

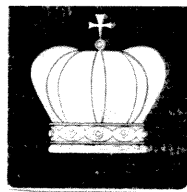
Turn	Player	Action	Draw
188	2	HD ransoms hostage, dr ⁶ = 6 = +\$600+60d	42
189	2	HD recovers from scurvy	63
		Draw New Merchant @ 26	26, 36
190	2	HD refits.	55
191	3	CV moves 1+3 N18-O19-O20-O21	15
192	1->4	Rhett moves to O21; D&R removed from JR	53
193	3	CV moves: O21-L26	66
		Warship Intercepts HD; blockades him in port, -1 unrest	
		Mutiny check: dr ⁶ = 2 < 3, passes, reset unr to 6	11
		Random event, reshuffle; HD unr -1, sc worsens,	
		Maynard (1) Healable wound; Matthews (1) healable wound+	32, 22
		Ogle (6) n/e	
		Place a Pro Gov @ dr ⁶⁶ = 53	56
194	3	CV attacks (S)7 @ 26: 6+3+4-7 = 6 > dr ¹² = 5 capture	*B, 64, 24
		85d, hostage 4+7+0 > 10, yes; HP = 26, no torture, but D&R	54
195	3	CV unavailable, may move Maynard	

STATUS:

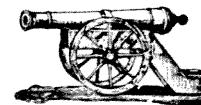
#	Captain	Ship	Hex	Spd	Cbt	Not	Cun	Unr	NW	H1	H2	Hostage	Attk
2	Davis	Sloop	S19a	+3	6	29	5	5	1549	--	--		NPB
4	Rackham	Scnr	J141	+3	3	16	(1)	7	0	200	40	--	BPN
4	Rhett*	KC	O21	5	8								
2	Maynard+	KC	Box1	4	5sc								
3	Herdman	KC	T14	3	15								
2	Matthews+	KC	CC20	2	5sc								
1	Tew	Sloop	K11	-3	4	2	1	6	0	10	--	--	S
3	Vane**(D&R)	Sloop	O21	+3	6	5	0	5	08	85	--	26	S
4	Ogle	KC	DD20	3	13sc								

The Board:

Guvs: Pro: 35, 46, 53, 31, 41 Anti: 23, 24, 54, 64, 13
 Merchants: 26
 Warships: S19 Destroyed Port: 14, 32
 Out-of-Play Pirates: Teach (#3), Portugese (#1), Taylor (#3)
 Letters of Marque: PFBP
 Safe Havens: Vane(Port Royal w/839 d)



RUSSIAN CIVIL WAR "CULLODEN" TURN 1A



NOTE: I'm temporarily (?) running this game until the original GM can resume. It's being run in pbem/ftf fashion rather than the pbm mode of our previous RCW game. To complicate things, one of the players has dropped out during the hiatus between the original GM and me. Anyone wanting position A let me know soonest.

TURN 1A.1: TRADES: None.

TURN 1A.2: PLAYER TURNS

TCC:

Random Events Phase: 3, 1; Epidemic in Ural (n/e), Novg (-R8), Vologda (n/e), Vite (-R4, BY2)

Movement Phase:

Trotsky[3], 1R8 Tver-Yaro-Volo. Peterson[1] Petr-Novg-Volo j-Trotsky. Gail[1] Novg-Volo j-Trotsky. Sablin[1] Psko-Novg-Volo j-Trotsky. Rykov[1], 1R3 Baku-Dagh. Deniken[3], 1W4 Kuba-DCos-Sara(+1W2)-Sama(+1W2)-Kaza. Rodzyanko[1], 1W2 Esto-Livo j-Yudenich. Khanzin[1] 1W3 Chel-Oren-Sama-Kaza. Sidorin[1] 1W3 Stav-Kirg-Sama-Kaza j-Khanzin. Romanovsky[1] Astr-Kirg(+1W2)-Astr-Tere.

Combat Phase:

Rykov[1] 1R3 @ Dagh subversive vs 1Br2 @ Baku (2:1 dr = 2 = DE)
 Yudenich[1], Rodzyanko[1], 2R2 @ Livo vs 1Ba2 (3:1 dr = 3 = DE)
 Deniken[3], 1W4, 2W2 & Khanzin[1], 1W3, Sidorin[1] 1W3 @ Kaza vs Markin 1R2 (6:1 dr = 6 = DE)

Purge Phase:

The Central Committee is: TCC (11 votes), KLF (9 votes), AD (10 votes), SR (9 votes). The Committee votes (Strength 39, DR = 8 -> 1); TCC usurps control of Blucher[1], 1R2, Czar @ Ekst.

Randomizer Phase: BA. +1Ba2 @ Cour, Esto, and Kovn.

AD:

Random Events Phase: 5,6; Draw from the Randomizer: AM.

Movement Phase:

THE BOARD:

A Astronomy Domine (Barrett?): Tukachevsky (109) @ Novg, Zinoviev (112) @ Smol, Sorokin (116) @ Tula, Muriviev (113) @ Psko, Kikvidze (107) @ Vldv, Smirnov @ Orel, Krasnov (212) @ DonC, Chatilov @ Astr, Lukomsky @ Kuba, Kappel @ Omsk, Dietericks (207) @ Vldv
B Socialist Revolutionaries (Martin): Veroshilov (119) @ Kurs, Bogomolitz (106) @ Kras, Kalinin (117) @ Kalu, Sivers (103) @ Yeli, Stalin @ Kurs, Wrangel (211) @ Astr, Miller (218) @ Arch, May-M (201) @ Khar, Abramov (202) @ Yeka, Markov (217) @ Tere
C Les Grogards (Poulter): Lenin (110) @ Petr, Frunze (114) @ Vldm, Vatzetiz (120) @ Yaro, Antonov (101) @ Vite, Yeserov @ Kalu, Slavin @ Smol, Bonch-B (108) @ Olon
D The California Connection (Scott): Trotsky (111, Peterson, Gail, Sablin) @ Volo, Rykov (104) @ Dagh, Deniken (216, 210, 209) @ Kaza, Khanzin (206, Sidorin, 262) @ Kaza, Romanovsky (213) @ Tere, Yudenich (219, Rodzyanko, 220) @ Livo; 1Ba2 @ Cour, Esto, Kovn; Blucher (105, Tsar) @ Ekst
E Kabalistic Latvian Freemasons (Whyte): Budyenny (118) @ Orel, Bela Kun (102) @ Grod, Kamenev @ Tula, Berzin @ Tver, Sytin @ Tver, Kolchak (205, Au) @ Omsk, Dutov (208) @ Oren, Kutepov (203) @ Taur, Ulagi @ Astr
INACTIVE: 1Br2, 1US2 @ Arch; 1TC2 @ Baku; 1Cz4 @ Chel; 1Ge2 @ Cher; 1Sb2 @ Chit; 1TC2 @ Dagh; 1Cz3 @ Ekst; 1Br2 @ Eriv; 3Fn6 @ Finl; 1Si2 @ Irku; 1Uk2 @ Khar; 1Ge2, 3Fr2, 1Gr1, 1Hu1, 1Rm1, 1Uk2 @ Kher; 1Uk4 @ Kiev; 1W2 @ Ural; 1Ge2 @ Livo; 1By2 @ Mins; 1Ge2 @ Mohl; 1Cz3 @ Omsk; 3Po6 @ Pola; 1Ge2 & 1By2 @ Vite; 1Sb2, 2US2, 3Ja6 @ Vldv, RIAU @ Yeka.

VP CHART

A: 3 AM, 2 PM **B:** 1 AM, 2 PM **C:** 1 AM, 2 PM
D: 1 AM, 3 PM, 2 RVP, 302, 1 WVP, 115 **E:** 1 AM, 3 PM **U:** 101, 109, 306

--"1826" (continued from p 15)

PLAYER STATUS (cert. limit 16)

Chris F365, 4*P-O, 1 Paris, 1 Alsar, 1 GC, 1 Belge (7) <priority>
 Chuck F377, 3*GC, 5*Nord, 1 P-O (7)
 Mark F344, 4*Alsar, 4*Belge (6)
 Paul F372, 6*Paris, 3*Ouest, 1 Nord (8)



SILVERTON

Turns 12B-13A



Morrison buys #17 (-\$600), declines #81. Zieske buys #45 (-\$200).

PLAYER STATUS:

#1: Denver, Cary Nichols, \$25,550, S+2,S,P,P, #14, #85, #15, #56(3 C), #66, #67, #3 (0.5 Au), #7 (0.5 Au), #20, #97.
#2: Denver, Wayne Morrison, \$10,900, S+1,S,P+1,P, A3, A2, B9, A1, #33, #19(1 Ag), #17.
#3: El Paso, Debbie Anderson, \$12,550, S+1,S,P+1,P, A20, B22, B21, #83(1 Cu), #38 (4 L), #42(3 L,D), #39(4 L), #80(3 Ag), #93(2 L), #82, #91.
#4: SLC, Paul Zieske, \$30,500, S,S,P+2,P, #53(6 C), A5, #35, #55(6 C), #44(24 C), #30(4 L), #54(8 C), #12(2.5 Ag), #106(5 Cu), #13 (3 Ag), #24, #52, #45

AVAILABLE CLAIMS:

2 Marysville (Au: \$600/\$200)
25 Silverton (Ag: \$700/\$200)
81 Silver City (Ag: \$200/\$200)
99 Gallup (C: \$300/\$200)
PAX: A4, A6, A19, B7, B10, C14a, C16a, C18
5 Leadville (Au: \$500/\$100)
77 Lake Valley (Ag: \$700/\$100)
90 Mc Gaffey (L: \$200/\$150)
101 Capitan (C: \$400/\$100)
The Deck

Turn 12b (SNOW)

#1: Operate #65 (-\$150: 2 = D), #67(-\$150: 12 = 5 C). Deliver 3C from #56 & 5C from #67 to Pueblo (+\$1600).
#2: Operate A2 (+\$250), A3 (+\$400), A1 (+\$100), #33(-\$100: 9 = 2 L), #19(-\$250: 10 = 1 Ag), #17(-\$250: 4+6 = 1 Ag). Deliver not.
#3: Operate A20 (+\$300), B22 (+\$700), #83 (-\$250: 4 = D, #38 (-\$150: 8 = 2 L), #80 (-\$250: 10 = 1 Ag), #39 (-\$250: 6 = 2 L), #93 (-\$250: 5 = 1 L), #82(-\$150: 4+6 = 2 Cu), #91(-\$200: 2+6 = 2 L). Deliver 4 L each 38 & 39 to SF (+\$2,400).
#4: Operate #30(-\$200: 3 = D), #53(-\$100: 6 = 2 C), #44(-\$100: 10 = 4 C), #12(-\$250: 9 = 1 Ag), #106 (-\$400: 7 = 1 Cu), A5(+\$100), #13(-\$200: 8 = 0.5 Ag), #54 (-\$200: 7 = 3 C), #55 (-\$200: 6 = 3 C), #45 (-\$150: 3+6 = 3 C), #52(-\$100: 6+6 = 5 C). Deliver 10C from #54 to SLC (+\$4000), 4 L from #30 to SLC (+\$4,800).

The Market: (IDN = 4)

Au: 5 + (0x4) =	5	nc	5000u	EP L: 11 + 0 - 4 =	7	-1	500
Ag: 11 + (0x2) - 4 =	7	nc	1000	Den C: 5 + (0/2) - 4 =	1	+3	300u
Cu: 5 + 0 =	5	nc	1000u	SLC C: 9 + (10/2) - 4 =	10	-1	300u
Den L: 11 + 0 - 4 =	7	-1	300	Pueb C: 2 + 8 - 4 =	6	nc	200
SLC L: 7 + 4 - 4 =	7	-1	1000	SF C: 5 + 0 - 4 =	1	+3	600
Pueb L: 9 + 0 - 4 =	5	+1	800	EP C: 10 + 0 - 4 =	6	nc	700
SF L: 12 + 8 - 4 =	16	-4	300				

DEPLETIONS: #6, #10, #16, #18, #30, #41-43, #51, #57, #62, #65, #75, #78-79, #83-84, #103-104.

Turn 13a

#1: Prospect #5(-\$500). Survey Cimarron-York Canyon (-\$800).
#2: Prospect A4 (-\$100x27) and #25 (-\$700). Survey(+1) Montrose-Ouray/Placerville (-\$700) and Lake City-South Fork (-\$2000).
#3: Prospect(+1) A19 (-\$100x9) & #101 (-\$400). Survey(+1) San Ysidro-Cuba (-\$600), Dalles-Grant (-\$900).
#4: Prospect Deck twice (#22 & #87 -- Go to Jail). Survey Denver-Manitou Jet (\$600) and (dr = 8) Manitou Jet-Colorado Springs (\$200).

PLAYER STATUS:

#1: Denver, Cary Nichols, \$25,350, S+2,S,P,P, #14, #15, #56(3 C), #66, #67(5 C), #3 (0.5 Au), #7 (0.5 Au), #20, #97, #5.
#2: Denver, Wayne Morrison, \$4,950, S+1,S,P+1,P, A1, A2, A3, A4, B9, #33(2 L), #19(2 Ag), #17(1 Ag), #25.
#3: El Paso, Debbie Anderson, \$10,250, S+1,S,P+1,P, A19, A20, B22, B21, #83(1 Cu,D), #38 (2 L), #42(3 L,D), #39(2 L), #80(4 Ag), #93(3 L), #82, #91, #101.
#4: SLC, Paul Zieske, \$36,700, S,S,P+2,P(Jail), #53(8 C), A5, #35, #55(9 C), #44(28 C), #54(1 C), #12(3.5 Ag), #106(6 Cu), #13 (3.5 Ag), #24, #52(5 C), #45(3 C), #227

AVAILABLE CLAIMS:

2 Marysville (Au: \$600/\$200)
22? Telluride (Ag: \$800/\$200)
77 Lake Valley (Ag: \$700/\$100)
89 Porter (L: \$300/\$150)
11 Heber City (Ag: \$500/\$250)
27 Silverton (Ag: \$300/\$150)
81 Silver City (Ag: \$200/\$200)
90 Mc Gaffey (L: \$200/\$150)

95 Farmington (C: \$400/\$200)

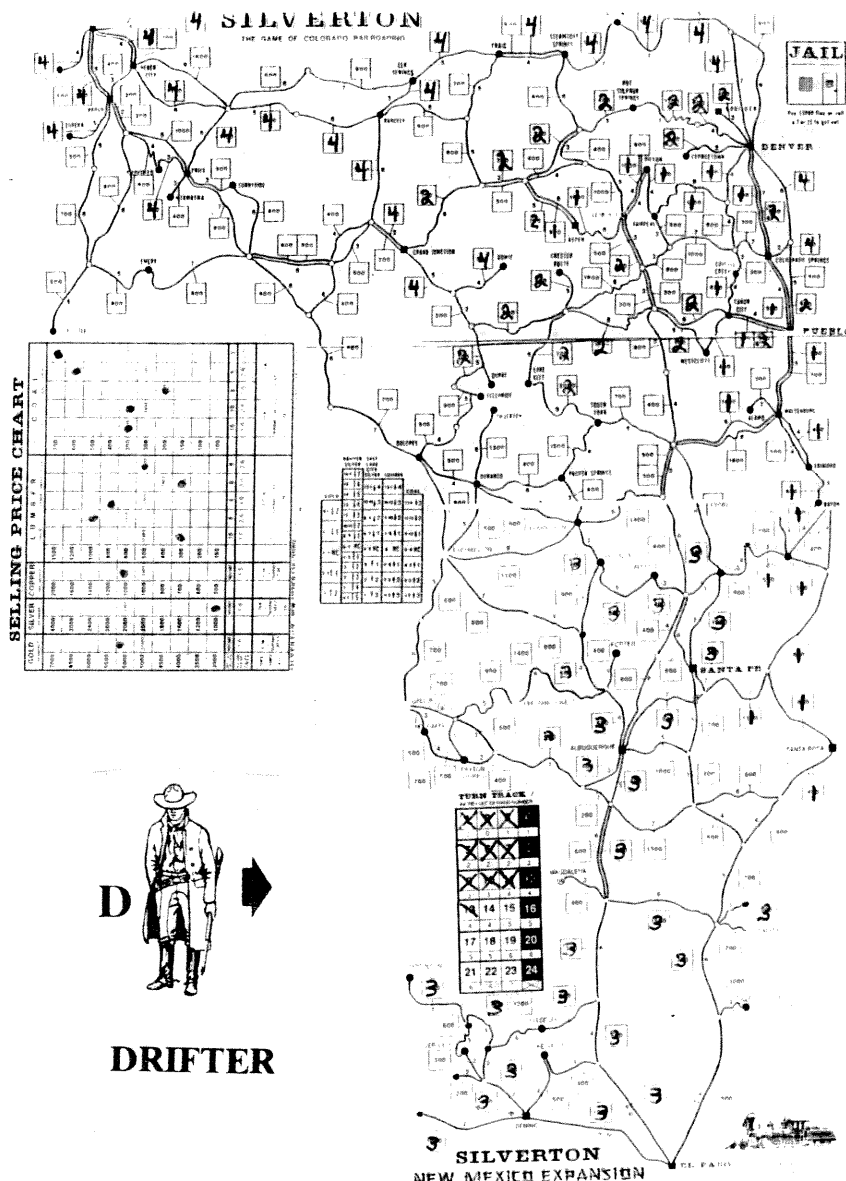
PAX: A6, B7, B8, B12, B10, C14a, C16a, C18

99 Gallup (C: \$300/\$200)

The Deck

Due next times are your orders for Turn 13b operations and deliveries and Turn 14a prospecting and surveying.

LEGEND: Claims in **bold** are unworked. Underlined depletions, Leadville. Ag = silver, Au = gold, C = coal, Cu = copper, L = lumber or lower, m = middle, PAX = passenger, u = upper.





MERCHANT OF VENUS

"Grow"
EeepEEP Wins!
Turns 20.3-25.1



The Cast:

Ms Nar: EeepEEP, \$26, Clipper, Deeds = \$800
Debbie Anderson: Brego the Wynom in *Secretariat*, Clipper, \$230, Deeds = \$800
Ron Fisher: Why the Gossuth in *The Thunderbolt Greaselapper GTO*, Freighter, \$20
Bob Dowrey: Nik, \$558, Clipper, Deeds = \$400.

Turns 20.3-25.1

20.3 Gossuth: Roll (AP=4), 4. Use 4 as Pilot. Move R-B-Y-NC-MGS-R20-Neutron Port. Sell two furniture (+\$360, draw Demand for Genes @ 2 & Demand for Pelts @ 6) and sculpture (+\$250, draw Fare from 9b to 5). Buy Combined Drive and two silk (-\$580). EeepEEP collects \$119 in commissions.

20.4 Nik: Roll 3,3,5,6. Use 3 as Pilot. Move Titan's Tower(p)-B10-(Y30)-(Y10)-R-A-R-B-(Y) NC3-A-NC3-(Y)-B-R-B-(Y)-B-(Y)-R-NC3-R-(Y)-A.

21.1 EeepEEP: Roll 1,3,4,5. Move Jellybeast Landing(s)-p. Sell wine with two demand (+\$180+18, draw furniture & Demand for Grease @ 7b), wine with demand (+\$120+12, draw Demand for Wine @ 5 & Genes). Buy factory (-\$200+20), glass (-\$120+12+60), and dust (-\$10+1).

21.2 Wynom: Roll 1,2,3,6. Move Airhome-Y-B-R-Y30(-\$10)-Y10-A-B20-R20-o-Terror Station(s). Buy Terror Station (-\$200).

21.3 Gossuth: Roll (AP=4), 1->4. Use 4 as pilot. Move: NC-(Y)-B-(R)-B-(R)-Wet Landing(p). Sell silk (+\$440, draw toys & spice), barter IOU (90) & \$10 for G. Junk, pick up Fare to 10, buy spice(-\$30) & Whale Port (-\$200). Wynom collects \$44+9+1+3+20 in commissions. EeepEEP collects \$50.

21.4 Nik: Roll 5,5,5,5. Move A-o-Dryport(s). Buy Dryport (-\$200).

22.1 EeepEEP: Roll 1,5,6,6. Use 5 as Pilot. Move Jellybeast Landing(p)-A-TG3-B-R-B-Y10-R10-B10-Y-B-R-o-Goliath(s). Buy Goliath (-\$160).

22.2 Wynom: Roll 3,4,5,6. Move Terror Station(s)-p. Sell two videos (+\$400+\$40, draw furniture & Demand for Genes @ 9a), buy Liquor (-\$80+8), factory (-\$200+20), and hives (-\$140+70+14).

22.3 Gossuth: Use AP? Roll (AP=4), 1->6. Use 4 as Pilot. Move Wet Landing(o)-A-NC4-(R)-(Y)-B30(-\$10)-(Y)-(o)-OP. Sell G. Junk (+\$200, draw Demand for Dust @ 7b), buy Shield (-\$60) and 3 Wine (-\$60).

22.4 Nik: Roll 1,2,2,4. Move Dryport(s)-p. Sell liquor with demand (\$90+60+9+6, draw Demand for Spice @4b & liquor) and liquor (\$90+9, draw Demand for Liquor @ 9a); buy 2 genes (\$120+12).

23.1 EeepEEP: Roll 3,5,6,6. Move Goliath(s)-p. Sell glass (+\$200+20, draw Demand for Grease @ 7b), Dust with demand (\$50+50+5+5, draw servomechs & liquor), buy servomechs (-\$200+20), factory (-\$80+8), and bolts (-\$100+50+10).

23.2 Wynom: Roll 2,3,5,5. Move Terror Station(p)-R20-Y-B-R-B-Y-B-R-p-B-Paintfall(p). Sell hives (+\$220+22, draw silk) & liquor (+\$90+9, draw Demand for Perfume @ 3); buy two furniture (-\$220+22).

Capitains log : The crew is celebrating on some of the Mulch Wine we picked up as we head for home and we watch for the 1,438th time the winning of the Triple Crown on the anniversary of the victory of the horse that the history recalls as Big Brown. We have affirmed he is a true overlord of all horses.

23.3 Gossuth: Roll 1,4. Use 1 as pilot. Move OP-p-(Y)-B30-(Y)-(R)-NC1-(R20)-NC1-Shuttlestop.

23.4 Nik: Roll 1,4,6,6. Move Dryport(p)-A-(Y)-R-B-R-B-(Y)-B-R-B-(Y)-R-B10-R10-B10-(Y10)-R-o-Rumbleport(s). Buy Rumbleport (-\$200).

24.1 EeepEEP: Roll 3,6,6,6. Use 3 as pilot. Move Goliath(p)-R-B-Y-B10-R10-Y10-B-R-B-TG3-A-Y-R-B-Y-R-A-o-Ice Station(s). Sell bolts (+\$200, draw liquor); buy Ice Station (-\$200).

24.2 Wynom: Roll 1,3,4,6. Use 6 as Pilot. Move Paintfall(p)-Y10-R-B-NC6-R20-NC6-A-p-R-B-R-B-Y-Neutron Port(p). Sell 2 Furniture (+\$360, draw Fare 6-4b & liquor); buy factory (-\$200), silk (-\$140, and traits (-\$120+60). EeepEEP collects \$82 in commissions.

24.3 Gossuth: Roll 1,4. Use 1 as Pilot. Move Shuttle Stop-OP-Space Station-TG4-NC.

24.4 Nik: Roll 1,2,4,6. Move to Rumbleport(s)-p. Sell two genes (\$240+24, draw Demand for Wine @ 4a & genes. Buy the factory, Guard Plants, and 1 perfume (-\$100+10-60+6+30-80+8).

25.1 EeepEEP: Roll 2,3,5,6. Move Ice Station(s)-p. Sell Servomechanisms (+\$300+30, draws silk),

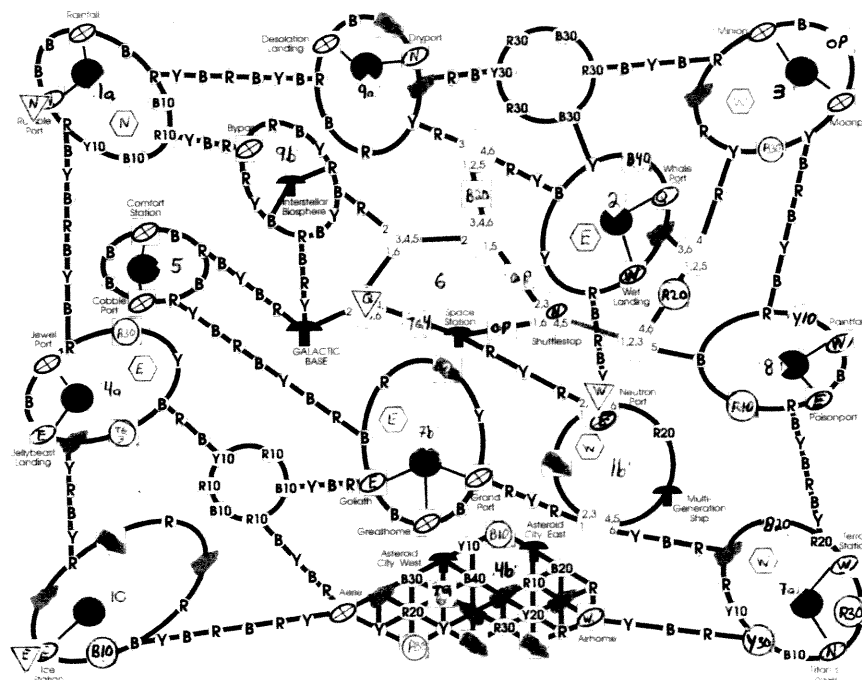
PLAYER STATUS

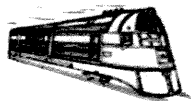
Player	Nar	Anderson	Fisher	Dowrey
Race	EeepEEP	Wynom	Gossuth	Nik
Ship	Clipper	Clipper	Freighter	Clipper
Cash	\$538	\$568	\$330	\$314

IOUs	--	--	4a	--
Hull	Shield	Shield	R Sh, M Gear, Autopilot, Sh	R Y Dr, Shield Plants
Hold 1	---	Silk	Wine	Perfume
Hold 2	---	Traits	Spice	Perfume
Hold 3	xxx	xxx	Comb Dr/Fare-10xxx	xxx
Hold 4	xxx	xxx	Wine	xxx
Hold 5	xxx	xxx	Wine	xxx
Deeds	\$1500	\$1200	\$200	\$700
Total	\$2038	\$1768	\$530	\$1014

CULTURE STATUS

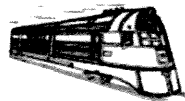
Culture	System	Goods	Factory	Demands
Tinkerers	Galactic Base	---	---	Fares-2,4a,9a
1a Nillis	Rogue Planet	Perfume(x4)	Available	
1b Volois	MultiGeneration Ship	Silk(x1)	Sold, no	
2 Graw	Water World	Spice(x0)	Sold, no Genes	
3 Niks	Inhabited Moon	Wine(1), Toys	Sold, yes	Perfume
4a Dell	Jungle World	Dust(x5)	Sold, no	Fare-Base, Wine
4b Humans	Asteroid System	Videos(1)	Available	2xSpice
5 Shenna	Colony World	Pelts(x6)	Available	2xWine, Fare-Base, Dust
6 Yxklyx	Space Station World	Grease(x4)	Available	2xPelts, Fare-4b
7a Zum	War-Torn System	Liquor(4)	Available	3xDust
7b EeepEeps	Giant Planet	Servomechs(x3)	Available	2xGrease, Fare-Base
8 Wynoms	Polluted Planet	Furniture(x0)	Available	
9a Cholos	Desert World	Genes(x4)	Available	Liquor, Grease
9b Wollow	Interstellar Biosphere	Paperwts(x4)	Available	Fare-5
10 Gossuth	Ice Planet	Sculpture(x3)	Available	Fare-Base. 2xGenes





RAIL BARON

Red Rovered!
Purple Wins!!



THE CAST

Brad Martin (Blue), 106 k\$, CB&Q, B&M, C&O, L&N, NP, D&RGW, N&W, Sch
Chris Bailey (Purple), 209 k\$, NYNH&H, AT&SF, NYC, GN, SOU, B&O, CRI&P, Sch
Andy York, (Green), 145 k\$, C&NW, SAL, RF&P, ACL, T&P, UP, SL&SF, IC, GM&O, Sch
Ron Fisher, (Red), 289 k\$, PA, WP, CMSP&P, MP, SP, GM&O, Sch

URNS 84.4-End

84.4: Red rolls 7+6. Moves on PA to StL, then on 3S on MP (-1 k\$).
85.1: Blue rolls 7+?. Moves on NP to Seattle (-1 + 29.5 k\$). Rolls 8-even, 8-odd = Kansas City. Red die out = 3. Moves on NP to 1W of Spokane.
85.2: Purple rolls 4+6. Moves on CB&Q to Kansas City (-\$10k to Blue), then on SL&SF to Memphis, overrunning Red 1 NW of Memphis (+50 k\$ from Red, -10k\$ to Green).
85.3: Green rolls 3+4. Moves on ACL to 3N of Charleston (-1 k\$). **COURTESY CALL.**
85.4: Red rolls 5+1. Moves on MP to 2N of Houston (-1 k\$).
86.1: Blue rolls 10+1. Moves on NP to Billings then 2S on CB&Q (-1 k\$).
86.2: Purple rolls 8+6. Moves on CRI&P to 1E of Tucumcari, then on AT&SF to 4 NNW of Phoenix (1 k\$).
86.3: Green rolls 8+6. Moves on ACL to RF&P to Washington, then to Philadelphia on PA (-1 + 11 k\$, 10 k\$ to Red).
86.4: Red rolls 5+3. Moves on MP to San Antonio, then SP to 2 SE of El Paso (-1 k\$).
87.1: Blue rolls 7+6. Moves on CB&Q to KC (-1 + 19.5 k\$). **COURTESY CALL.**
87.2: Purple rolls 5+2. Move on AT&SF to 3E of Los Angeles (-1 k\$).
87.3: Green rolls 7-odd, 6-odd = Detroit. Rolls 5+2. Moves on PA to 1W of Columbus (10 k\$ to Red).
87.4: Red rolls 6+3. Moves on SP to 2W of Phoenix (-1 k\$).
88.1: Blue rolls 6-even, 5-even = Oakland. Rolls 7+6. Moves on CB&Q to Denver, then 2W on D&RGW (-1 k\$).
88.2: Purple rolls 9+?. Moves on AT&SF to LA (-1 + 17.5 k\$). Doesn't declare*. Rolls 5-even, 6-even = Dallas. Red die out = 1. Moves 1E on AT&SF.
88.3: Green rolls 8+?. Moves on NYC to Detroit (+6.5 k\$, 10 k\$ to Purple). Rolls 8-odd, 5-odd = Albany. Red die out = 4. Move on NYC to Buffalo.
88.4: Red rolls 9+?. Moves on SP to Los Angeles then AT&SF to San Diego (-1 + 29.5 k\$; 10 k\$ to Purple). Doesn't declare. Rolls 8-odd, 5-odd = Albany. Red die out = 2. Moves on AT&SF to LA.
89.1: Blue rolls 7+3. Moves on D&RGW to 1 N of SLC, then on SP to 1E of Reno (-1 k\$; 10 k\$ to Red).
89.2: Purple rolls 2+2. Moves on AT&SF to 3NW of Phoenix (-1 k\$).
89.3: Green rolls 3+?. Moves on NYC to Albany (+\$5.5 k\$, 10 k\$ to Purple). Roll 7-odd, 10-even = St Louis. Red die out = 4, move on NYC to 1 SW of Buffalo.
89.4: Red rolls 11+4. Moves on SP to 1W of San Antonio (-1 k\$).
90.1: Blue rolls 5+3. Moves on SP to Oakland (+19.5 k\$, 10 k\$ to Red). Rolls 9-even, 10-even = Butte. Red die out = 4. Moves 4N on SP.
90.2: Purple rolls 11+6. Moves on AT&SF to T&P 3W of Dallas, then T&P to Dallas (-1 + 14.5 k\$, 10 k\$ to Green).
90.3: Green rolls 2+6. Moves on NYC to St Louis (+13 k\$, 10 k\$ to Purple).
90.4: Red rolls 8+6. Moves on SP to San Antonio, then on MP to St Louis (-1 k\$).
91.1: Blue rolls 5+5. Moves on SP to NP then to Spokane (-1 k\$, 10 k\$ to Red).
91.2: Purple declares. Rolls 12-even, 9-even = Pocatello for alternate. Rolls 7+5, moves on SL&SF to CRI&P then to Little Rock (-1 k\$, 10 k\$ to Green) and wins!

*NOTE: Purple switched hometowns from LA to Little Rock at the beginning of the game. Had he not, he would've won at this point.

Status:

Player	Cash	Destination	Payoff	RRs
Blue:	148.5 k\$	Butte	12 k\$	CB&Q, B&M, C&O, L&N, NP, D&RGW, N&W, Sch
Purple:	287.5 k\$	Pocatello	15 k\$	NYNH&H, AT&SF, NYC, GN, SOU, B&O, CRI&P, Sch
Green:	159 k\$	St Louis	13 k\$	C&NW, SAL, RF&P, ACL, T&P, UP, SL&SF, IC, GM&O, Sch
Red:	291.5 k\$	Albany	29 k\$	PA, WP, CMSP&P, MP, SP, Sch

MARTIN (Blue): Congratulations to Chris. I was out of the running when I was one turn too slow in buying SP.

FISHER (Red): Congratilations and well played. I thought it was a great game and had a lot of fun.

YORK (Green): Quite an enjoyable game - thanks for the GMing job Paul!

BAILEY (Purple): Well that was closer than I imagined. Weird on so many levels.

First off, that Red managed to dominate the tables for as long as they did even though I had a higher "access percentage." (As I saw it, "access percentages" were as follows: Purple: 73.63, Red: 64.08, Blue: 53.07 and Green: 49.17; though I didn't write the program that calculated this for me, I believe these "access percentages" represented what percentage likelihood someone would be able to go to a city they had access to, not what percentage of cities on the board; if it were that way then New York and Rapid City would be treated equally, which, of course, they are not). I digress. Early on, I had hoped Red would have to sell something off and boy did I have my fingers crossed for the WP ... but it was not to be.

Second, I was surprised to see NO auctions or sell-offs at all. My experience is that there are lots, even bankruptcies. But thru guile and good dice, everyone ... most notably Green ... managed to skirt death.

I have avoided a southern strategy over the years and I did alright with it again, rarely drawing a destination that required access. I must say, though, I am always amazed at how infrequently Miami comes up even though the percentage charts would lead you to believe otherwise.

Finally, an observation on money paid v. money received. By my count, Blue and Green ran deficits of 131 and 70, respectively, while Red and I (Purple) had surpluses of 129 and 82, respectively. As money paid to the bank and money received for reaching destinations was relatively level, I must conclude this game swung on trackage rights paid v. trackage rights received. Clearly a game of the haves v. the have-nots.

Thanks to all.

GM: Here's a few stats that might be of interest:

The value of Blue's rail net is 94 k\$. The value of Blue's rolling stock is 40 k\$. Blue services 35 of the board's 65 cities (53.85%). Blue has a 52.49% chance of rolling a serviced city.

The value of Purple's rail net is 162 k\$. The value of Purple's rolling stock is 40 k\$. Purple services 41 of the board's 65 cities (63.08%). Purple has a 73.05% chance of rolling a serviced city.

The value of Green's rail net is 139 k\$. The value of Green's rolling stock is 40 k\$. Green services 32 of the board's 65 cities (50.77%). Green has a 49.17% chance of rolling a serviced city.

The value of Red's rail net is 119 k\$. The value of Red's rolling stock is 40 k\$. Red services 35 of the board's 65 cities (53.85%). Red has a 63.5% chance of rolling a serviced city.

-"1826" (continued from p 3)

(CH:182+60=242, CB:351+20=371). Price holds at C122. Buy 6-train from Nord for F41.

(GC:102-41=61; Nord:41+41=81)

Quest: Play tile #8 in J4 (se-w). Convert to 10-share company. Run G9-H7-H2-II (150). Pay 15/share dividends (PZ:300+45=345, Ouest:30+105=135); stock to A110.

Belge: Upgrade E15 w/tile #14 (new tracks NE-SW); run train - C11-B12-C13-C15-C17 (140); payout 14/share dividends! Pup:288+56=344, CB: 351+14=365, Belge: 243+56=299; stock moves to D100; buy 1-"4H" train from Alsat for 1 (Belge:299-1=298 & Alsat:601+1=602); sell 4-Belge shares to pool for 400 - stock falls to E90; treasury = 298+400=698.

Nord: Play tile #58 in C9(nw-e). Run G9-D10-C11-C9-B8 (160) & C11-B12-B10-B8 (110). Pay 27/share dividends. (CH:242+135=377, PZ:345+27=372) Price to F75. Buy no train.

CORPORATIONS

Co.	Pres	Price	IO	Pool	Treas	Trains	Cash	Dest	Tokens
P-O	CB	B165	0	0	5	-64	353	yes	G9,I7,1
Paris	PZ	C150a	0	3	0	-64	700	yes	G9,E5,I7,mail in G9
Alsat	MF	C150b	0	5	0	-64	602	yes	G19,L14,C13
GC	CH	C122	5	1	0	+64	61	no*	L14,I13,1
Ouest	PZ	A110	0	0	7	-6	135	yes	G9,2
Belge	MF	E90	0	5	0	-44	698	yes	C13,3
Nord	CH	F75	0	4	0	-64	81	yes	G9,C11,1

* Corporation remains 5-share; + from Algerian

--continued on p 9

1826 SR1-OR 5b

The Players:

Christopher Bailey: F450 <priority>
Chuck Hanna: F450
Mark "Puppy" Frueh: F450
Paul Zieske: F450

SR1a

Chris bids F115 for GCB (Grand Central Belge); F335 uncommitted
Chuck bids F75 on the Chemins de Fer D'Algerie (Algerian); F375 free
Mark bids F225 on the Ligne Strasbourg-Bale (Alsattian); F225 Frueh
Paul bids F45 on Regie des Postes (Mail); F405 free
Chris passes. Chuck buys Ponts et Chaussées (bridge) for F20
Paul gets mail for F45
Chuck gets Algerian for F75
Chris gets GCB for F115

Mark passes. Paul buys Parisian for F160, sets price at F110
Mark gets Alsattian for F225, sets price at F110

Chris buys Le Share Presidente of Paris-Orleans (P-O), sets par at F110 (335-220=115)
Chuck buys presidency of Grand Central de France, setting par at F110. (355-220=135)
Mark buys share of Alsatt, Alsatt floats and has F330 in capital (225-110=115)
Paul buys share of Paris, Paris floats and has F330 in capital (245-110=135)
Chris buys P-O from bank, P-O floats and has F330 in capital (CB 115-110=5)
Chuck buys Central; it floats with a treasury of F330 (CH 135-110=25)
Mark buys share of Paris, Paris has F440 in capital (115-110=5)
Paul buys share of Alsatt, Alsatt has F440 in capital (135-110=25)
All pass. Chris has priority

OR1

Private company income: CB+20, CH+20, MF+30, PZ+35,
Paris: Lays tile #9(se) in F8 and #58(se) in E7 (-40-40); reaches destination (remains 5-share company); token in E5 (-60); no trains, no dividends; price to A100; buys 2 2H trains (-200); treasury 440-40-40-60-200=100.
Alsatt: Lays tiles #4(sw) in H18 and #4(sw) in I17; no train or dividends; price to A100b; buys 2-"2H" trains for F200; treasury = 440-200 = F240.
P-O: Lay tile #9(ne) in H8 and #4(ne) in J6; place token in I7 (-F40); no train, no dividends; price to A100c; buys 2-"2H" trains for F200; treasury: 330-40-100-100=F90
GC: Lay tile #8sw in K15 and #9se in M15 (-40). No train, no run, no dividends; price to A100d. Buy two 2H trains for F200. Treasury F330-40-100-100=F90.

SR2

All pass. Chris maintains priority, nothing sold out.

OR2

Private company income: CB+20 (25+20=45), CH+20 (45+20=65), PZ+10 (60+10=70)
Paris: Play tile #8(sw) in F6 (-40); run G9-E7 & E5-E7(60+50=110), pay 22/share dividends PZ+66, MF+22, Paris+22; stock to A110; buy no train.
Alsatt: Play tile #8 in J16(ne); destination reached - however, remain 5-share company; place Alsatt token in L14 for F120; run trains - G19-H18-I17 & L14-N16 (60+70=130), pay 26/share dividends! MF+78, PZ+26, Alsatt+26; stock to A110b; no train purchase; treasury = 240-120+26 = F146.
P-O: Play tile #4 in K5(ne); destination reached, does not convert to 10-share corporation; run G1-I7 (70) and I7-J6-K5 (40) for F110; pay 22/share divs (CB:+66, P-O:+44); stock to A110c; no train purchase; treasury = 90-44 = F134.
GC: Play tile #6 in M13(ne-w). Run L14-N16 (70) & L14-K17 (60); pay 26/share (CH:65+78=143, GC:90+52=142). Price to A110d. Buy no train.

SR3

Chris buys GC (111-110=1; GC treasury to 252)
Chuck buys Alsattian (143-110=33; Alsatt:146+110=256)
Mark buys GC (135-110=25; GC:252+110=362)
Paul buys PO (162-110=52; PO:134+110=244)
All pass. Chris maintains priority

OR3

Private company income: CB+20 (1+20=21), CH+20 (33+20=53), PZ+10 (52+10=62)
Paris: Play tile #8(ne) in G5; mail token in Paris (G9); run G9-E7 & E5-E7(70+50=120), pay 24/share dividends PZ+72 (62+72=134), MF+24 (25+24=49), Paris+24 (82+24=106); stock to

A122; buy no train; sell 1 share from treasury (+122, 106+122=228), stock to B110.
Alsatt: Play tile #8 in F18(se), keep 5-share corp., run trains for F130, payout 26/share dividends! +78 to Pup (49+78=127), +26 Chuck (53+26=79) +26 Paul (134+26=160); stock moves to A122.
P-O: Play tile #9(ne-ww, towards Bordeaux) in L4; run G1-I7 (70) and I7-J6-K5 (40) for F110; pay 22/share divs CB:+66 (21+66=87), PZ+22 (160+22=182), P-O:+22 (244+22=266); stock to A122b.
GC: Play tile #9se-nw in K13. Run L14-N16 (70) & L14-K17 (60). Pay 26/share dividends. CH: 79+78=157, CB: 87+26=113, MF: 127+26=153. Price to A122c. Buy 4H-train (GC:362-200=162); closing the Algerian (Phase Change).

SR4

Chris: Buy Paris from pool (113-110=3)
Chuck: Sell 1 Alsattian, buy presidency of Chemin de Fer du Nord, setting par at F90. CH: 157+122-180 = 99; Alsattian to B110b.
Mark: Sell 1 GC and 1 Parisian (for 122 + 110) and buy Belge Presidency for 180, share price at C 90. GC stock drops to B110 & Parisian drops to C100. (Pup @ 153+122+110-180 = 205)
Paul: Buy 1 GC for 110. (PZ:182-110=72)
Chris: pass. Chuck: Buy Nord @ 90 (99-90=9), Nord floats.
Mark: Buy Belge share @ F90 (205-90=115)
Paul, Chris, & Chuck: pass. Mark: Buy Belge share @ F90 (115-90=25) Belge Floats!
All pass. Paul has priority

OR4a

Private company income: CB+20 (3+20=23), CH+5 (9+5=14)
P-O: Play tile #15(sw, with new track towards Le Mans and Nantes) in I7. Convert to 10-share corporation. Run I7-G9 (80) and I7-J6-K5 (50); pay F13/share divs; buy 4H-train; (CB:23+39=62, PZ:72+13=85; P-O:266+78-200=144); stock to A135.
Alsatt: Play tile #58(nw-e) in F15. Convert to 10-share corporation. Run L14-K17 (60) & L14-N16 (70). Pay F13/share. Price to B122. Buy 4H-train. (MF:25+39=64, PZ:85+13=98, Alsatt: 256+65-200=121).
GC: Play tile #8 in J12(se-ne). Run L14-M13 (50) & L14-N16 (70) & L14-K17-I17 (70). Pay 38/share. (CH:14+114=128, CB:62+38=100, PZ:98+38=136). Price to B122b.
Paris: Upgrade Paris (tile 514, orientation doesn't matter); convert to 10-share company; run G9-E7 & E5-E7(90+50=140); pay 14/share dividends (PZ:136+42=178, CB:100+14=114); price to C110; buy 4H train (Paris: 228+70-200=98).
Nord: Play tile #9 in F10(sw-ne) (using bridge company special privilege) and #8 in E11(sw-nw). No train, no run, no dividend. Price to C82. Buy 4H train. (Nord:270-200=70).
Belge: Lay tiles #6 in B12(w-se) for F40 and #4 in D14(nw-se) for F60; no train or run - stock falls to C82b; buy 1-"4H" train for 200; treasury: 450-40-60-200=150.

OR4b

P-O: tile #57 in H6 (se-nw); run I7-G9 (100), I7-H6 (50) and I7-J6-K5-M3 (90); pay F24/share divs;(CB:114+72=186, PZ:178+24=202; P-O:144+144=288); stock to A150.
Alsatt: Lay tile #57 in E15(nw-se) (connect to Brussels); run trains - L14-N16 (70), L14-K17 (60) & G19-H18-I17-K17 (90); payout 22/share dividends! Pup (66+64=130), PZ (22+202=224), Alsatt (110+121=231); stock moves to B135; buy 1-"4" train for 200; treasury = 231-200=31.
GC: Lay tile #57 in I13(sw-ne). F60 token in I13. Run L14-N16 (70) & L14-K17 (60) & M13-L14-I13 (70). Pay 40/share dividend. (CH:128+120=248, CB:186+40=226, PZ:224+40=264). Price to B135b.
Paris: Play tile #619 in H6(new spokes ne-w), token in I7 (-80); run G9ne-E7 (90) & G9sw-I7 (110) & E5-H6-I7(100); pay 30/share dividends (PZ:264+90=354, CB:226+30=256, Paris:98-80+150=168); price to 122; buy no train.
Nord: Play tile #58 in D10. Destination reached; become 10-share corporation. Run G9-D10-C11 (100). Pay 10/share dividends. (CH:248+30=278, Nord:70+70=140). Price to C90. Sell 5 treasury shares @90. (Nord:140+90*5=590). Price to G65.
Belge: Lay tile #4 in B10(w-e), run train - B8-B10-B12-C13-D14 for 110; payout 11/share dividends! (Pup 130+44=174, CB 256+11=267 & Belge 150+55=205); stock moves to C90; no train purchase.

SR5

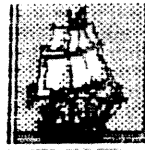
Paul: Sell 1 P-O (to B135), 1 Alsatt (to C122b), 1 GC (to C122c), buy Pres certificate of Ouest at 110 (PZ:354+150+135+135-220=554).
Chris: buy 1 Alsatt from pool (267-122=145)
Chuck: buy P-O from treasury (CH:278-135=143, P-O:288+135=423)
Mark: buy Belge from treasury (174-90=84)
Paul: buy Paris from pool (554-122=432)
Chris: buy P-O from from treasury (CB:145-135=10; P-O:423+135=558)
Chuck: buy Nord from treasury (CH:143-65=78; Nord:590+65=655)
Mark: pass

--continued on p 2

ON DECK

1835: Hanna, Zieske
1870: Hanna, Zieske
AGE OF RENAISSANCE: Copeland
BALKAN WARS: K Wilson, Dave A
CIRCUS MAXIMUS: Nichols, Zieske, Fryling, Anderson (need 1 to 7 more)
COLONIAL DIP: Burgdorf, Copeland, Nichols, Dave A (need 3 more)
GUNSLINGER: Scott, Fowble, R Fisher, Dave A; need 3 or 4 more
HISTORY OF THE WORLD: Anderson, Khaoz, Wilson, Martin
LIFT-OFF!: York, Dave Anderson
MAGIC REALM: Buttitta, Deb A, Teh (need 1-5 more)
PUERTO RICO: Martin
RAIL BARON: Martin, York
SAMURAI (AH): Copeland
WIZARD'S QUEST: Crowe(?), Fisher, Lenoir, Teh(?), Anderson?

OTHER POSSIBILITIES: 1829 (N OR S), 1830, 1856, 4000 AD*, AIR BARON, CIRCUS IMPERIUM, CIRCUS MINIMUS, DOWN WITH THE KING, GODSFIRE, KAMAKURA, MONSTERS RAVAGE AMERICA, PLANET MINERS, STELLAR CONQUEST, SUCCESSORS, TITAN,
 *Guest GM



OUR SUBSCRIBERS

Dave & Debbie Anderson, 20832 Tuck Rd, Site 32, Farmington Hills, MI 48336; (248)473-7482; ravenclawnerdz@sbcglobal.net
 Christopher Bailey, 264 Fifth Avenue, Apartment 3C, New York, New York 10001; (917) 553-0070; christopher_bailey@yahoo.com
 Alan Bargender, alanmb777@hotmail.com
 Paul Barrett, UK; pdh@hiraganadragon.plus.com
 John Boardman, 234 East 19th St, Brooklyn, NY 11226-5302
 Martin Burgdorf, UK; mjb@astro.livjm.ac.uk or martin_burgdorf@hotmail.com
 Tom Butcher, 2129 Pinebrook Trl, Cuyahoga Falls, OH
 thomas-butcher@sbcglobal.net
 John Buttitta, 339 Ninth, Neenah, WI 54956; (414) 725-7218; docjob@tds.net
 Rick Copeland, 1531 Pack Horse Rd, Winchester, VA 22603; (540) 888-4420; cope655321@topofva.net
 Bob Dowrey, 76 Potter Ave., Orchard Park, NY 14127; dowreyhome@adelphia.net
 Ron Fisher, 210 Normandy Dr, Wilmington, NC 28412; (910) 395-8330; skylark3@charter.net
 Mark Frueh, 1128 Olympus Dr, Naperville, IL 60540; (630) 357-7780; mark_frueh@msn.com
 Jim and Marcia Fryling, 5444 Bonnie, Kentwood, MI 49506; james_fryling@cornerstone.edu
 Chuck Hanna, 379 Wilett Ct, Severna Park, MD 21146-1912; (410) 544-3077; cchanna76@yahoo.com
 Chris Hassler, 2000 S Armour Ct, La Habra, CA 90631; chassler@roadrunner.com
 Tom Howell, 365 Storm King Rd, Port Angeles, WA 98363; (360) 928-9698; off-the-shelf@olympus.net
 Doug Kent, 11111 Woodmeadow Pkwy #2327, Dallas, TX 75228; doug@whiningkentpigs.com
 Laird Khaoz, 20832 Tuck Rd, Site 32, Farmington Hills, MI 48336; kbloodcrow@yahoo.com
 Andy Lischett, 2402 Ridgeland Ave, Berwyn, IL 60402
 Brad Martin, Australia; westfront@hotmail.com
 Wayne Morrison, LTSI-ASAC Khamis 05267, 7150 Troy Hill Dr, Elkridge, MD 21075; thomascat_ksa@yahoo.com
 Cary Nichols, 756532-938 S FM 1673, Snyder, TX 79549-8812
 Paul Saunders, 6 North Hill Dr, Carriere, MS 39426; (601) 798-2347; paul_saunders@bellsouth.net
 Mike Scott, 4040 E. Piedmont Dr, Space 61, Highland, CA 92346; (909) 864-4343; mikesmag@sbcglobal.net
 Jack & Rose Shacklett, 365 Hobbs-Reesor Rd, Vine Grove, KY 40174; (502) 828-4281; pilotshack@yahoo.com
 Robert Skynner, thebagge@yahoo.co.uk
 Gina Teh, lone_hammy@yahoo.com.sg
 Kevin Wilson, 18623 Santa Maria Dr., Baton Rouge, LA 70809-6702; (225) 751-3857; ckevinw1@cox.net
 Andrew York, PO Box 201117, Austin, TX 78720-1117; wandrew88@gmail.com
 Paul Zieske, 3501 Keenan Lane, Glenview, IL 60025; (847) 498-9237; zieskep@juno.com
 Rudy Zodda, 7 Hansen Ave, New City, NY 10956; (845) 708-9056; rzodda@aol.com

 DEADLINE FOR MOST GAMES IS 1800 CENTRAL TIME 4 Jul 08

The Bottom Line

This is **BORIS THE SPIDER**, a 'zine dedicated to the play of multiplayer games. BORIS is usually published following the first Friday of the month by Paul Bolduc, 203 Devon Ct, Ft Walton Beach, FL 32547-3110 and currently has a subscription price of \$12.75 for 12 issues in hardcopy in the US. A hardcopy sub will also include an e-mail sub. Make checks payable to "Paul Bolduc". BORIS can be reached at (850) 863-9081, or prbolduc@aol.com. If phoning, expect to be greeted by an answering machine. If we're here, not engaged in an epic computer battle or enthralled in baseball, hockey, or college football, and recognize your voice, you may get to talk to a real human, so don't despair and hang up upon hearing our recorded message (it changes every power outage). Visit the BORIS Website at:

http://members.cox.net/Boris_Spider/BorisHome.html

GAME OPENINGS ELSEWHERE

BLUT UND EISEN (Tom Butcher): Openings in 1826, and whatever you may want to GM. Sub fee: 90¢ to \$1.20 an issue depending on size. Last issue received: #136, deadline 16 Jun 08.

CHEESECAKE (Andy Lischett): **DIPLOMACY**. No game or sub fee. Last issue received: #280, 28 Apr 08, deadline 9 Jul 08.

ETERNAL SUNSHINE (Doug Kent): **DIPLOMACY** and **BALKAN WARS VI**. Last issue posted: #17, Jun 08, deadline 24 Jun 08. <http://www.whiningkentpigs.com/dw/eshtml16.htm>

GRAUSTARK (John Boardman): Standby players for **DIPLOMACY** wanted. Game fee/sub for starting players \$35 for duration of the game. For non-players, \$15 for 10 issues. Last issue found: #784, 8 Dec 07, deadline 4 Jan 08.

S.O.B. (Chris Hassler): Openings in **GUNSLINGER**, **KREMLIN**, **MERCHANT OF VENUS**, **ROBO RALLY**, **HISTORY OF THE WORLD**, **INDUSTRIAL WASTE**, **OUTPOST**, **MACHIAVELLI**, **POWER-GRID**. Sub fee: \$2/issue. Last issue received: #144, May-Jun 2008, deadline 10 Jun 08. See <http://homepages.roadrunner.com/sobhome/index.html>

WESTERN FRONT (Brad Martin): Openings in **DARK CONTINENT**, **DIPLOMACY** (Fog of War), **EMPIRE BUILDER/EURORAILS**, **FAIR MEANS OR FOUL**, **HACIENDA**, **LORDS OF THE SIERRA MADRE**, **MACHIAVELLI**, **MONTGOLFIERE**, **PAX BRITANNICA**, **PRINCES OF FLORENCE**, **PUERTO RICO**, **RAILWAY RIVALS**, **REPUBLIC OF ROME**, **SAMURAI (HIG)**, **SANTIAGO**, **SETTLERS OF CATAN**, **SHANGHAI TRADER**, **TIKAL**. Sub fee: free. Last issue received May 08, #94, deadline 12 Jun 08. See <http://groups.yahoo.com/group/wfront>

