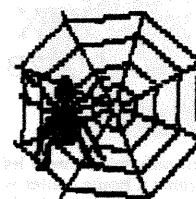


BORIS THE SPIDER
 c/o 203 Devon Ct
 FUB FL 32547-3110
http://members.com.net/boris_spider/Borishome.html

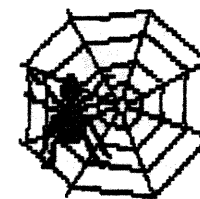
TABLE OF CONTENTS	
Addresses	p 18
BLACKBEARD	p 8
BRITANNIA	p 6
DIPLOMACY	
XIX	
MACHIAVELLI III	p 2
DUNE	p 3
Game Openings Elsewhere	p 7
1826	p 19
1870	pp 14-17,3
KINGMAKER	p 12
KREMLIN	p 4
MERCHANT OF VENUS	p 5
On Deck	p 2
RUSSIAN CIVIL WAR	p 18
SILVERTON	p 9
	pp 10-11



VOLUME IX, #19

BORIS THE SPIDER

A Journal of Duplicitous Doings,
 Raw Power, and Naked Greed
 "Oh, what a tangled web we weave
 When first we practice to deceive!"
 --Sir Walter Scott--



9 Jul 08

#274

1826 Over, 1870 Begins!

Congratulations to Paul Zieske on winning our first game of 1826 by a handy margin. So now we turn to 1870, where we have Zieske, Hanna, Martin, Frueh, and Bailey, starting this time. We have four for HISTORY OF THE WORLD, but would like two or three more, so we'll wait one more month for that to take advantage of the four pages freed by the conclusion of 1826.

Which leaves two or three pages for other gamestarts. Leading candidates are *WIZARD'S QUEST*, *GUNSLINGER*, *PUERTO RICO*, *RAIL BARON* and *MERCHANT OF VENUS*. Sign up soonest and bring a friend.

IMMEDIATE OPENINGS:

BLACKBEARD: Position #1 is available (Tew (2nd Pirate), no KCs)

BORIS'S BULLETIN BOARD

THOUGHT FOR THE MONTH: "Part of the secret of success in life is to eat what you like and let the food fight it out inside." -- Mark Twain

PICTURE OF THE MONTH: "Da Spider" playing *Gangsters* at the 2007 WBC in his 2006 WBC's assistant game master's hat that melted a bit on the trip home.

NEW ON THE WEBSITE: *RAIL BARON* and "Graw" have been moved to the Finished Folder. "Volols" has also made it there. The link to the *RUSSIAN CIVIL WAR* optional rules has gone dead, so I'll be posting them here as soon as I can find my stashed copy.

Rick Copeland has a new e-mail address; see p 18.

There's a new international DIP tourney starting in September. For details, see:

http://www.stabbeurfou.org/docs/regles/en/PresentationMansion_en.html

WARNING: The August deadline falls on 1 Aug and I'll be leaving for WBC on the morning of the 4th, which means the hardcopy has to be duped by 1800 Sunday (when the local Office Depot closes) the 3rd so I can get it collated, stapled, stamped and labeled early enough to get a good night's sleep before the 14+ hr drive of the first leg to Lancaster. That also means orders that don't meet the deadline may not be included, so don't be late.

Remember: The World Boardgame Championships run 5-10 Aug with a four day pre-con starting 1 Aug at the Lancaster Host Hotel, in Lancaster, PA. Be there.

BOOS & KUDOS

The Madame Bolduc Press Excellence Award (and free issue) goes this month to Boris for his GM response in "Gawain".

This month's Ms Nar Super-Sudsy Bomb is lobbed at Paul Saunders for NRR (and thus elimination) in "XIX".

PERSONAL COMMUNICATION HERE (maybe):

Deadline for most games is 1800 CDT 1 Aug 08



ITALY BESET!! RUSSIA OUT! Fall 1984

XIX
2007B

MINAS MORGUL: It's curtains for Russia and things are grim for Italy, with only two centers left -- one of those an unprotected home center. Germany, on the other hand, regains a home center and actually has a vacant home center to build in. Can A/T have recognized they need to keep the Kaiser in the game to give them chances to build a northern fleet to circumvent the Gibraltar and Scandinavian stalemate lines?

TROOP MOVEMENTS

Italian F TYN retreats to ION. Russian F KIE NRR so retreats otb.

AUSTRIA (Wilson): [A Ser-Gre], A Tri-Trl, F Nap S TUR F Aeg-Ion, A War S TUR A Mos-Lvn, A Bud-Vie, A Ven S A Tri-Trl.

ENGLAND (Fisher): [A Lvn-StP](r-???), [F Bot-StP](sc), F Den-Swe, F Nth C A Lon-Den, F Nwg C A Ed-Nwy, A Lon-Den, [A Edi-Nwyl].

FRANCE (Anderson): A Naf S F Wes-Tun, A Bur-Bel, F Mid H, A Mar H, F Wes-Tun, [F Tyn-Ion].

GERMANY (Nichols): [F Hol-Kie], [A Kie-Ber].

ITALY (Copeland): [A Boh-Mun], [A Mun-Ber], [F Tun H](d), A Pie H, [F Ion-Gre](r-???).

RUSSIA (Saunders): No units on board.

TURKEY (Fryling): A Gal-Sil, A Mos-Lvn, F Con-Aeg, A Sev-Mos, A Ukr-Gal, F Aeg-Ion, A Smy-Arm.

Orders in brackets fail; d = destroyed, NMR = no move received, NRR = no retreat received, r-??? = retreat to ???, u = unordered.

English A LVN must retreat otb or to PRU. Italian F ION must retreat otb or to ADR, ALB, or APU.

SUPPLY CHART

AUS: Bud Tri Vie Gre Ser War +Nap +Ven

ENG: Edi Lon Lpl Nwy Den StP Swe

FRA: Bre Mar Par Por Spa Bel+Tun

GER: Ber Hol +Kie

ITA: -Nap Rom -Ven Mun -Tun

RUS: -Kie

TUR: Ank Con Smy Bul Rum Sev Mos

(8) Build 2

(7) Even

(7) Build 1

(3) Build 1

(2) Tear 2

(0) Even = OUT

(7) Even

Due next time are orders for retreats, builds/tears and for Spring 1905. Need Press!

EMBASSY BEAT

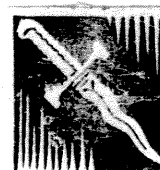
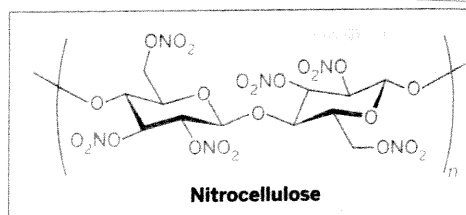
Italy to Austria and France-----You churlish knaves! I knew the stab was coming for some time, but I was unaware that you could actually intercept my orders last turn and make sure my units did not move. Such perfidy. You both should be trying to kill countries who actually have a chance of winning this game. A curse upon both your houses.

--"Culloden" (continued from p 9)

VP CHART

A: 3 AM, 2 PM, 6 RVP, 1WVP, 103, WABM **B:** 1 AM, 2 PM, 212 **C:** 1 AM, 2 PM

D: 1 AM, 3 PM, 2 RVP, 302, 1 WVP, 115 **E:** 1 AM, 3 PM **U:** 101, 109, 306, 1Po6



MACHIAVELLI T/V Rules the Waves! Summer 1501

2007C
pw10

Errata: T/V A CAR failed to move to SLA. French A SAV could have retreated to SALZ.

Ragnociti: The Papal fleet is down to one easily picked off squadron, so the Adriatic has become a T/V pond, as has the Ionian and Central Med. Only the waters off France and Genoa are free of Turkish corsairs, although the French could sortie from their island bases deeper into Unholy waters. The land battle is less clear. Austria clings to the northeast corner and survives at the whim of the Doge. The situation in the central peninsula is quite fluid, but the French are strongly entrenched in the northwest and continue to expand. Figure Austria to go when the Doge can call it a conquest. So it's up to France and F/P to come to some sort of accord to stop T/V. Otherwise, ...

TROOP MOVEMENTS:

French A SAV retreats to PRO. T/V A BOL retreats to PIS.

Austria (Burgdorf, 14d): [A Carin-Tyr], [A Aus S A Carin-Tyr];

Florence/Papacy (Scott, 13d): A Per-Rome, A Cre-Par, [A Gen-Cor], A Sal-Nap, [F Aqu-Anc](d), F Pio-Pisa, A Cap S A Sal-Nap, [F Urb S A Aqu-Anc], F Sav S F LS, [A Bol-Flo], F LS C A Gen-Cor.

France (Nichols: 0d): A Pro H, [A Sla-Aus], [A Nap-Cap](r-???), [A Tyr S A Sla-Aus], [F Cor-LS], F Sar S F GoL, A Mon B2, F GoL S A Pro, A Avi-Tur;

Venice/Turks (Anderson, 13d): A Bari S F LA-Aqu, A Man H, A Trent-Milan, F LA-Aqu, F Pal S F TS, [F Anc S A Car-Urb], [A Pis-Flo], [A Car-Urb], A Tre H, F TS S FRE F Cor-LS, A Cro H, F UA C A Car-Urb.

Autonomous: Luc Mod Mon(d) Pav Sav Tur

French A NAP must retreat otb or into g.

Orders in brackets fail; nlo = no longer owned, nso = not so ordered, nsu = no such unit, r-??? = must retreat somewhere, u = unordered.

Due next time are orders for Fall 1501. And press!

EMBASSY BEAT

F/P: Aw Shucks, why's everybody picking on me?

GM-F/P: 'Cuz you're stuck between the corner powers and they all have to go through you to get at the other guys. Duh.

--1826 (continued from p 17)

PLAYER STATUS (cert. limit 16)

Chris F4316, 6*P-O, 5 SNCF, 2 Belge, 2 Ouest, 1 Alsat, 1 Nord (16)

Chuck F4466, 6*Nord, 5*SNCF, 2 P-O, 2 Belge, 1 Paris, 2 Ouest (16)

Mark F3978, 6*Alsat, 5*Belge, 5*Midl, 3 Paris (16)

Paul F5161, 6*Paris, 6*Ouest, 3 Alsat, 2 P-O, 1 Belge (16)

Available Tiles:

Yellow: 3(1), 4(1), 5(2), 6(2), 57(4), 5 8(3)

Green: 14(3), 15(2), 16(1), 19(1), 20(1), 23(2), 24(1), 25(3), 26(1), 27(1), 28(0), 29(1), 87(0), 88(1), 141(0), 142(1), 143(1), 203(0), 204(0), 619(3)

Brown: 39(1), 40(1), 41(1), 42(2), 43(3), 44(1), 45(1), 46(2), 47(1), 70(1)

Trains: TTTTT

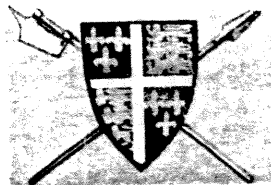
FINAL STANDINGS:

Paul = 5161+2160+1080+660+180+990 = 10,231

Mark = 3978+1080+2160+900+825 = 8,943

Chris = 4316+360+1980+360+165+330+750 = 8,261

Chuck = 4466+360+660+360+990+330+750 = 7,916



KINGMAKER

"King of Pain"

Turn 36 Movement-Turn 37 Events

KOP

The Cast:

THE MAD HUNGARIANS (Dowrey): Fitzalan [30], Warden of the Northern Marches [(1)50], Stanley (50), Earl of Richmond(40), Marshal of England (100), *Le Lucas*, Bouchier (10), Earl of Salisbury [30], Chancellor of Cornwall [(1)50], Berkeley (10), Earl of Essex [20], Flemish Crossbowmen [20], Scrope (10), Clifford (10). Event cards (1), Crown Cards (3).

THE CALIFORNIA CONNECTION (Scott): Pole [30], Chancellor of England [50], Grey [20], Earl of Westmorland [40], Ipswich; Duke of York [30], Courtenay[30], Admiral of England [50], Lancaster [(20)]. Event cards (5), Crown Cards (3).

KNIGHTS OF THE PRIVY POT (Deb Anderson): Mowbray [50], Treasurer of England [50], Hastings [10], Bishop of Carlisle [(30)], Bishop of Durham [(30)], Flemish Crossbowman [20], Cromwell [10], Earl of Kent [30], Steward of the Royal Household [50], Scots Archers [20], Percy [100], Lieutenant of Ireland [(2)50], Archbishop of York [(30)], Northampton [(20)], *Le Michael*, *Le Nicholas*, *Le Rose*, Beaufort[30], Constable of London [(2)50], Carlsbrooke, Newcastle. Event cards (2), Crown Cards (1).

THE STAFFORDSHIRE QUARTERSTAFFS (Shacklett): Stafford [30], Chamberlain of Chester [(2)50], French Foot(100), Nottingham [(20)], Neville [50], Audley [10], Earl of Wiltshire[30], Roos [20], Herbert [10], Talbot [30], Greystoke [10] Irish Kerns (50). Event cards (4), Crown Cards (4).

WESTERN FRONT (Martin): Holland(10). Event cards (6), Crown Cards (4).

TURN 36

EVENTS: Pole does not call Parliament.

MOVEMENT:

MH: Fitzalan and Berkely hold at Preston. *Le Swan* S19-S15-S12-S11-S10-S9. Stanley and Bouchier move GJ-Fe-Fd-Fc-Fb-Fa.

TCC: The nobles of TCC hold in place.

KPP: Mowbray Ib-Hc-Gb-Milford Haven. Hastings & Cromwell give 20 Scots archers to Percy, then sail *Le Nicholas* Continent-S12-S6-S5-S4.

SQ: All hold.

WF: Holland moves Ae-Penzance.

Combat: None.

CROWN DECK: None available. TCC will get the next one.

TURN 37

EVENTS:

MH: #38, Embassy from the Pope (n/e). Resuffle at end of Turn.

TCC: #27, Storms at Sea. *Le Swan* to Corfe or Weymouth. *Le Nicholas* to Carlsbrooke, Chichester, Corfe, Exeter, Pevensey, Plymouth, Southampton, Weymouth.

KPP: #41, Embassy from the King of Scots (n/e)

SQ: #90, Mercenaries Go Home (Scots Archers). KPP loses archers to Crown Deck.

WF: #126, Treachery. Lose Swansea from hand to the Crown Deck.

Due next: Orders for Movement 37. Methinks TCC has to off Eddie III or Artie

NOBLES: Audley, Greystoke, Herbert, Neville, Roos, Stafford, Talbot in Rhuddlan. Beaufort @ Scotland; Berkeley, Duke of York, Fitzalan, Grey, Pole @ Preston. Bouchier, Stanley in Fa. Courtenay & Holland in Penzance, Cromwell aboard *Le Nicholas*. Hastings, Mowbray in Ib. Percy on Continent.

SHIPS: *Le Christopher* & *Le Margarete* @ Penzance, *Le Lucas* @ Beaumaris; *Le Michael* @ Continent, *Le Rose* @ Scotland, *Le Swan* & *Le Nicholas* @ ???.

HEIRS: Reds: Margaret in Scotland w/ Beaufort; Edward of Wales in Beaumaris; Artie in Preston w/ Pole; Pretender (20) w/ Fitzalan @ Preston. Whites: George @ Rhuddlan w/ Audley, Edward III in Preston w/ Berkeley.

RIP: Henry VI, Richard of Gloucester, Edmund of Rutland, Richard of York, Edmund II of March.



KREMLIN

Reagan Elected!
Year 7a



The Cast: (in Table order)

Dave Anderson, Decaying, Licentious Antiquarians (DLA): 1 card, 1 wave

Brad Martin, Western Front (WF): 2 cards

Doug Kent, Whining Kremlin Pigs (WKP): 4 cards

Ron Fisher, Politburo Bureaucrats (PB): 2 cards

Mike Scott, The California Connection (TCC): 3 cards

Cary Nichols, Re-Education Deployment Society (REDS): 2 cards, 1 wave

Politburo

Party Chief:	Strychnin (T)	68?©	TCC(8), REDS(7)
KGB Head:	Wasolin (Z)	55s?	TCC(4), REDS(2)
Foreign Minister:	Nogoodnik (V)	67+	DLA(10+), WKP(10), WF(10)
Defense Minister:	Niewitko (D)	73	REDS(1)
Ideology Chief:	Protsky (U)	56w++	TCC(10), WKP(9), WF(2), REDS(1)
Industry Minister:	Purgemoff (F)	71	TCC(5), WKP(4)
Economy Minister:	Goferbrok (C)	74	REDS(2), PB(1)
Sport Minister:	Mischif (I)	68	PB(1)
Candidates:	HJLMY	People:	NPQ SX
KREMLIN WALL:	AEGKOR	Siberia:	B(83++)NW(62)

6.9 INTERPHASE (Concluded): WKP discards Card #12.

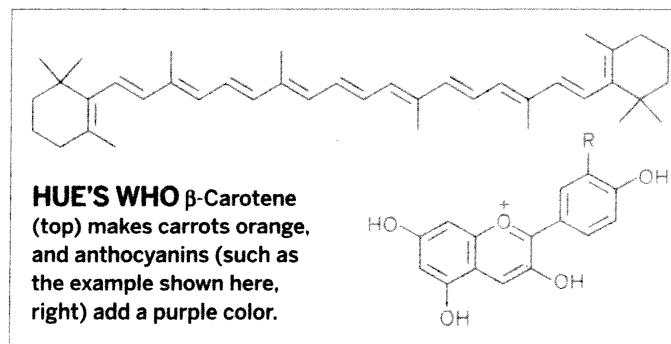
7.1 CURE: PB plays Card #37 "Reagan Elected." Beginning with TCC all players must either play an Intrigue card or declare all the remaining hidden IP of one Politician.

Due next time are your orders for Year 7, Cure through Health Phases.

Politburo

Party Chief:	Strychnin (T)	68?©	TCC(8), REDS(7)
KGB Head:	Wasolin (Z)	55s?	TCC(4), REDS(2)
Foreign Minister:	Nogoodnik (V)	67+	DLA(10+), WKP(10), WF(10)
Defense Minister:	Niewitko (D)	73	REDS(1)
Ideology Chief:	Protsky (U)	56w++	TCC(10), WKP(9), WF(2), REDS(1)
Industry Minister:	Purgemoff (F)	71	TCC(5), WKP(4)
Economy Minister:	Goferbrok (C)	74	REDS(2), PB(1)
Sport Minister:	Mischif (I)	68	PB(1)
Candidates:	HJLMY	People:	NPQ SX
KREMLIN WALL:	AEGKOR	Siberia:	B(83++)NW(62)

LEGEND: s = strong, w = weak, + = sick, ++ = ill, ? = under investigation, © = taking the Cure.





BRITANNIA "Galwain" Turns XIV-XV



The Cast

Copeland: Purple
Zieske: Green

Anderson: Red
Martin: Blue

Score: Green 109, Purple 73.5, Blue 72, Red 52.5.

TURN XIV (concluded)

Board:

Welsh (1): 2A @ Gwent, Powyss.

Brigantes (0.5): 2A @ Strathclyde.

Picts (2.5): 2A @ Dairiada, Galloway, Skye; 1A @ Alban, Caithness, Dunedin, Mar, Moray.

Caledonians (0.5): 2A @ Orkneys.

Irish (1): 2A @ Clywd; 1A @ Devon, Dyfed, March.

Norsemen (2): 1R @ Icelandic, Irish; 1A @ Hebrides.

Dubliners (2): 4A @ N Mercia; 3A @ Irish, 2A @ Cumbria.

Danes: 6*A, Canute @ Frisian; 3A @ York; 2A @ Cornwall, Cheshire, Essex, S Mercia; 1A @ Avalon, Lindsey, Norfolk, Pennines, Suffolk. * may be less available

Saxons (0): 2A, Edgar @ Downlands.

DUBLINERS: Grow 2 pp. 3A in N Mercia-York (6,6,6:4,1,1 -3 Danes). 3A Irish-Cheshire (5,3,3,2: 3,1 -1 Dane, 1 Dane r-Pennines), 1A Cumbria-Cheshire. Overpopulated, so 1A @ Cheshire starves.

DANES: Grow 4 pp. Add 1A @ Pennines. 3A, Canute Frisian-Suffolk-N Mercia (5+1,1+1,1:6,2 -1 each), 2A Pennines-Cumbria (6,3,5 -1 Dane, 1 Dubliner), 2A S Mercia-Hwicce-March, 2A Essex-S Mercia-Hwicce, 2A Frisian-Lindsey, 1A Cornwall-Atlantic-Avalon, 1A Lindsey-N Merc-March (5,4,4:4 -1 Irish), 1A Suffolk-Norfolk. Canute is King, +4 VP for Green. Withdraw 2A & Canute from N Mercia, 1A from March.)

SAXONS (0): Edgar rots away. Grow 0.5 pp. 2A Downlands-S Mercia-N Mercia.

Score: Green 113, Purple 73.5, Blue 72, Red 52.5.

TURN XV

The Danes are King +4 VP and a free army @ Pennines.

Score: Green 117, Purple 73.5, Blue 72, Red 52.5.

Board:

Welsh (1): 2A @ Gwent, Powyss.

Brigantes (0.5): 2A @ Strathclyde.

Picts (2.5): 2A @ Dairiada, Galloway, Skye; 1A @ Alban, Caithness, Dunedin, Mar, Moray.

Caledonians (0.5): 2A @ Orkneys.

Irish (1): 2A @ Clywd; 1A @ Devon, Dyfed.

Norsemen (2): 1R @ Icelandic, Irish; 1A @ Hebrides.

Dubliners (2): 3A @ Cheshire, York.

Danes (1): 2A @ Avalon, Hwicce, Lindsey, Norfolk, March, Pennines; 1A @ Cornwall, Cumbria.

Norwegians: Harald, 10A @ North.

Saxons (0.5): 2A @ N Mercia. Harold @ ???.

Normans: Willie, 4C, 6A @ Channel.

WELSH (1): Grow 1 pp. Move 1A Gwent-Powyss, 2A Powyss-Gwynedd.

Welsh to Saxons: you nuts, coming out of the nice safe Downlands, with the Norwegian and Norman hordes off our shores.

GM to Welsh: He's just sucking up to you. He wants to be eliminated by Purple before Harold can generate and thus deny the Normans the 3 VP for killing Harold.

BRIGANTES (0.5): Grow 1 pp. ...



DUNE Nexus Fremen & Guild Ally! Turn 5b



BOARD:

Atriedes (Wilson): 10T @ Arrakeen, 10R, 5L, 15S, (0/7) KH, 4C

Fremen (Anderson): 5T @ Seitch Tabr, 5T @ Habbanya Ridge Sietch, 7R, 3*R, 5L, 1S, 3C.

Guild (Nichols): 1T @ Tuek's Sietch, 2T @ Polar Sink, 1T @ Red Chasm, 1T @ Shield Wall(s9), 10R, 5L, 16S, 2C.

Harkonnen (Fisher): 6T @ Carthag, 4T @ Plastic Basin(s14), 5R, 4L, 6C, 11S.

Spice: Red Chasm(4), Wind Pass North (6).

Storm: Sector 2

Tanks: B Raban, G 5T, H 5T.

TURN 5

5.2 Spice Blow: Habbanya Erg (8) and Shai-Halud at Wind Pass North, destroying the spice there. We have another Nexus. G and F ally. There is a spice blow at Funeral Plain(6). A sees the top spice card is _____.

5.3 Bidding: There are 3 cards available. A sees that they are _____.

Due next time: Orders for Bidding, and Rival/Shipping/Movement Phases.

BOARD:

Atriedes (Wilson): 10T @ Arrakeen, 10R, 5L, 15S, (0/7) KH, 4C

Fremen (Anderson): 5T @ Seitch Tabr, 5T @ Habbanya Ridge Sietch, 7R, 3*R, 5L, 1S, 3C.

Guild (Nichols): 1T @ Tuek's Sietch, 2T @ Polar Sink, 1T @ Red Chasm, 1T @ Shield Wall(s9), 10R, 5L, 16S, 2C.

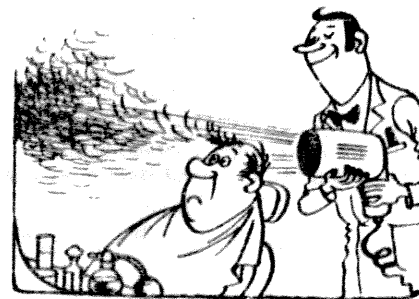
Harkonnen (Fisher): 6T @ Carthag, 4T @ Plastic Basin(s14), 5R, 4L, 6C, 11S.

Spice: Red Chasm(4), Habbanya Erg(8), Funeral Plain(6).

Storm: Sector 2

Tanks: B Raban, G 5T, H 5T.

LEGEND: C = cards, L = leaders, R = reserve, S = spice, T = tokens, @ = aggressor



Penetr / Kuev



BLACKBEARD

Turns 195-196



THE CAST:

1. (?????) Tew: Sloop
2. (Zodda) Davis, Sloop
3. (Bargender) Vane**, Sloop
4. (Martin) Rackham, Schooner.

STATUS:

#	Captain	Ship	Hex	Spd	Cbt	Not	Cun	Unr	NW	H1	H2	Hostage	Attk
2	Davis	Sloop	S19a	+3	6	29	5	5	1549	--	--		NPB
4	Rackham	Scnr	J14i	+3	3	16	(1)	7	0	200	40	--	BPN
4	Rhett*	KC	O21	5	8								
2	Maynard†	KC	Box1	4	5sc								
3	Herdman	KC	T14	3	15								
2	Matthews†	KC	CC20	2	5sc								
1	Tew	Sloop	K11	-3	4	2	1	6	0	10	--	--	S
3	Vane**(D&R)	Sloop	O21	+3	6	5	0	5	08	85	--	26	S
4	Ogle	KC	DD20	3	13sc								

The Board:

Guv's: Pro: 35, 46, 53, 31, 41 Anti: 23, 24, 54, 64, 13
 Merchants: 26
 Warships: S19 Destroyed Port: 14, 32
 Out-of-Play Pirates: Teach (#3), Portugese (#1), Taylor (#3)
 Letters of Marque: PFBP
 Safe Havens: Vane(Port Royal w/839 d)

Turn	Player	Action	Draw
195	3	Mungo moves T14-T15-T16-T17. Vane sleeps off D&R. Warship Attacks Most N Pirate = new W blockades HD	66 16
196	1=4	KC Ogle to BB18 Draw Random Event = Reshulle, -1 Unr to HD; Sc worsens. Maynard=2, Matthews=1 = dead, Ogle = 1. New Guv @ 25. Remove even merchants, add merchant @ 24	13 45, 62, 24 34
197	2		

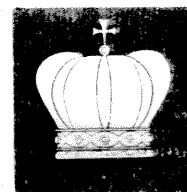
STATUS:

#	Captain	Ship	Hex	Spd	Cbt	Not	Cun	Unr	NW	H1	H2	Hostage	Attk
2	Davis	Sloop	S19a	+3	6	29	5	4	1549	--	--		NPB
4	Rackham	Scnr	J14i	+3	3	16	(1)	7	0	200	40	--	BPN
4	Rhett*	KC	O21	5	8								
2	Maynard†	KC	Box1	4	3sc								
3	Herdman	KC	T17	3	15								
1	Tew	Sloop	K11	-3	4	2	1	6	0	10	--	--	S
3	Vane**	Sloop	O21	+3	6	5	0	5	08	85	--	26	S
4	Ogle†	KC	DD20	3	12sc								

The Board:

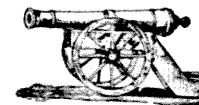
Guv's: Pro: 35, 46, 53, 31, 41, 25 Anti: 23, 24, 54, 64, 13
 Merchants: 24
 Warships: ? @ S19 Destroyed Port: 14, 32
 Out-of-Play Pirates: Teach (#3), Portugese (#1), Taylor (#3)
 Letters of Marque: PFBP
 Safe Havens: Vane(Port Royal w/839 d)

LEGEND: * = minor wound, ** = lost arm, a = anchored, l = Indian Ocean, S = has a stash, † = has scurvy



RUSSIAN CIVIL WAR

"CULLODEN"
TURN 1A.2 CONTINUED



THE BOARD:

A Astronomy Domine (York replaces Barrett): Tukachevsky (109) @ Novg, Zinoviev (112) @ Smol, Sorokin (116) @ Tula, Muriviev (113) @ Psko, Kikvidze (107) @ Vldv, Smirnov @ Orel, Krasnov (212) @ DonC, Chatilov @ Astr, Lukomsky @ Kuba, Kappel @ Omsk, Dietericks (207) @ Vldv
B Socialist Revolutionaries (Martin): Veroshilov (119) @ Kurs, Bogomolitz (106) @ Kras, Kalinin (117) @ Kalu, Sivers (103) @ Yeli, Stalin @ Kurs, Wrangel (211) @ Astr, Miller (218) @ Arch, May-M (201) @ Khar, Abramov (202) @ Yeka, Markov (217) @ Tere
C Les Grogards (Poulter): Lenin (110) @ Petr, Frunze (114) @ Vldm, Vatzetiz (120) @ Yaro, Antonov (101) @ Vite, Yeserov @ Kalu, Slavin @ Smol, Bonch-B (108) @ Olon
D The California Connection (Scott): Trotsky (111, Peterson, Gail, Sablin) @ Volo, Rykov (104) @ Dag, Deniken (216, 210, 209) @ Kaza, Khanzin (206, Sidorin, 262) @ Kaza, Romanovsky (213) @ Tere, Yudenich (219, Rodzyanko, 220) @ Livo; 1Ba2 @ Cour, Esto, Kovn; Blucher (105, Tsar) @ Ekate
E Kabalistic Latvian Freemasons (Whyte): Budyenny (118) @ Orel, Bela Kun (102) @ Grod, Kameney @ Tula, Berzin @ Tver, Sytin @ Tver, Kolchak (205, Au) @ Omsk, Dutov (208) @ Oren, Kutepov (203) @ Taur, Ulagi @ Astr
INACTIVE: 1Br2, 1US2 @ Arch; 1TC2 @ Baku; 1Cz4 @ Chel; 1Ge2 @ Cher; 1Sb2 @ Chit; 1TC2 @ Dag; 1Cz3 @ Ekate; 1Br2 @ Eriv; 3Fn6 @ Finl; 1S2 @ Irku; 1Uk2 @ Khar; 1Ge2, 3Fr2, 1Gr1, 1Hu1, 1Rm1, 1Uk2 @ Kher; 1Uk4 @ Kiev; 1W2 @ Ural; 1Ge2 @ Livo; 1By2 @ Mins; 1Ge2 @ Mohl; 1Cz3 @ Omsk; 3Po6 @ Pola; 1Ge2 & amp; 1By2 @ Vite; 1Sb2, 2US2, 3Ja6 @ Vldv, RIAU @ Yeka.

TURN 1A.2: PLAYER TURNS

AD:

Random Events Phase: 5,6; Draw from the Randomizer: AM.

Movement Phase:

Chatilov moves Astr-Kirg-Urak, attempts to attach #2_ (dr = 4+1 = dy). Tukachevsky moves to Psko and takes control of Muriviev (4R). Sorkin moves Tula-Orel. Smirnov moves to Smol (j Zinoviev). Krasnov w/W8 rails to Yeli (DonC-Kuba-Kuta-Tilf-Yeli). Kappel moves Omsk-Chel. Kikvidze moves Vldv-Harb.

Combat Phase

Tukachevsky (R8,) subverts German unit in Vite at 6-1 (5 = DE). Zinovieve (et al) subverts German unit in Mohl at 4-1 (1 = DE). Sorkin subverts the German unit in Cher at 2-1 (2 = DE). Krasnov attacks Sive at 3-1 (4 = EX = -Sive, R2, W8). Kikvidze subverts a US unit in Vldv at 1-1 (2 = EX = n/e).

Purge Phase: No action.

Randomizer Phase: Draw WABM.

LG:

Random Events Phase: 4,3 = Plague in Poland (-1Po6).

Movement Phase: ...

THE BOARD:

A Astronomy Domine (York): Tukachevsky (109, Muriviev, 113) @ Psko, Zinoviev (112, Smirnov) @ Smol, Sorokin (116) @ Tula, @ Psko, Kikvidze (107) @ Harb, Krasnov @ Yeli, Chatilov @ Astr, Lukomsky @ Kuba, Kappel @ Chel, Dietericks (207) @ Vldv
B Socialist Revolutionaries (Martin): Veroshilov (119) @ Kurs, Bogomolitz (106) @ Kras, Kalinin (117) @ Kalu, Stalin @ Kurs, Wrangel (211) @ Astr, Miller (218) @ Arch, May-M (201) @ Khar, Abramov (202) @ Yeka, Markov (217) @ Tere
C Les Grogards (Poulter): Lenin (110) @ Petr, Frunze (114) @ Vldm, Vatzetiz (120) @ Yaro, Antonov (101) @ Vite, Yeserov @ Kalu, Slavin @ Smol, Bonch-B (108) @ Olon
D The California Connection (Scott): Trotsky (111, Peterson, Gail, Sablin) @ Volo, Rykov (104) @ Dag, Deniken (216, 210, 209) @ Kaza, Khanzin (206, Sidorin, 262) @ Kaza, Romanovsky (213) @ Tere, Yudenich (219, Rodzyanko, 220) @ Livo; 1Ba2 @ Cour, Esto, Kovn; Blucher (105, Tsar) @ Ekate
E Kabalistic Latvian Freemasons (Whyte): Budyenny (118) @ Orel, Bela Kun (102) @ Grod, Kameney @ Tula, Berzin @ Tver, Sytin @ Tver, Kolchak (205, Au) @ Omsk, Dutov (208) @ Oren, Kutepov (203) @ Taur, Ulagi @ Astr
INACTIVE: 1Br2, 1US2 @ Arch; 1TC2 @ Baku; 1Cz4 @ Chel; 1Sb2 @ Chit; 1TC2 @ Dag; 1Cz3 @ Ekate; 1Br2 @ Eriv; 3Fn6 @ Finl; 1S2 @ Irku; 1Uk2 @ Khar; 1Ge2, 3Fr2, 1Gr1, 1Hu1, 1Rm1, 1Uk2 @ Kher; 1Uk4 @ Kiev; 1W2 @ Ural; 1Ge2 @ Livo; 1By2 @ Mins; 1Cz3 @ Omsk; 2Po6 @ Pola; 1By2 @ Vite; 1Sb2, 2US2, 3Ja6 @ Vldv, RIAU @ Yeka.

--continued on p 2



SILVERTON

Turns 13B-14A



Zieske declines #22.

PLAYER STATUS:

#1: Denver, Cary Nichols, \$25,350, S+2,S.P.P. #14, #15, #56(3 C), #66, #67(5 C), #3 (0.5 Au), #7 (0.5 Au), #20, #97, #5.
 #2: Denver, Wayne Morrison, \$4,950, S+1,S.P+1.P, A1, A2, A3, A4, B9, #33(2 L), #19(2 Ag), #17(1 Ag), #25.
 #3: El Paso, Debbie Anderson, \$10,250, S+1,S.P+1.P, A19, A20, B22, B21, #83(1 Cu,D), #38 (2 L), #42(3 L,D), #39(2 L), #80(4 Ag), #93(3 L), #82, #91, #101.
 #4: SLC, Paul Zieske, \$36,700, S.S.P+2.P(Jail), #53(8 C), A5, #35, #55(9 C), #44(28 C), #54(1 C), #12(3.5 Ag), #106(6 Cu), #13 (3.5 Ag), #24, #52(5 C), #45(3 C).

AVAILABLE CLAIMS:

2 Marysville (Au: \$600/\$200)
 22 Telluride (Ag: \$800/\$200)
 77 Lake Valley (Ag: \$700/\$100)
 89 Porter (L: \$300/\$150)
 95 Farmington (C: \$400/\$200)
PAX: A6, B7, B8, B12, B10, C14a, C16a, C18 The Deck

11 Heber City (Ag: \$500/\$250)
 27 Silverton (Ag: \$300/\$150)
 81 Silver City (Ag: \$200/\$200)
 90 Mc Gaffey (L: \$200/\$150)
 99 Gallup (C: \$300/\$200)

Turn 13b

#1: Operate #3(-\$200: 6 = D), #5(-\$100: 3+6 = 0.5 Au), #7(-\$400: 6 = 0.5 Au), #56(-\$150: 3 = D). Deliver 0.5 Au from #3 & 1 Au from #7 to Denver (+\$7,500).
 #2: Operate A1 (+\$100), A2 (+\$250), A3 (+\$400), A4(+\$1350), B9(+\$1350), #33(-\$100: 11 = 2 L), #19(-\$250: 10 = 1 Ag), #17(-\$250: 10 = 1 Ag). Deliver from 4 L from #33 to Pueblo (+\$3,200) & 3 Ag from #19 to Denver (+\$3,000).
 #3: Operate A20 (+\$300), B22 (+\$700), #38 (-\$150: 6 = 1 L), #80 (-\$250: 11 = 2 Ag), #39 (-\$250: 9 = 3 L) #93 (-\$250: 7 = 2 L), #82(-\$150: 9 = 2 Cu), #91(-\$200: 3 = D), #101(-\$100: 5+6 = 5 C). Deliver from 3L from #38 to EP (+\$1500) & 3L from #42 to EP (+\$1500).
 #4: Operate A5(+\$100), #53(-\$100: 11 = 4 C), #44(-\$100: 8 = 3 C), #12(-\$250: 9 = 1 Ag), #106 (-\$400: 5 = 1 Cu), #13(-\$200: 7 = D), #54 (-\$200: 9 = 4 C), #55 (-\$200: 9 = 3 C), #45 (-\$150: 8 = 3 C), #52(-\$100: 8 = 3 C). Deliver 16 C from #44 to Denver (+\$4,800) & 10 C from #53 to SLC (+\$3,000). Pay \$1000 fine to get prospector out of jail.

The Market: (IDN = 4)

Au: 3 + (1.5x4) = 9	-2	4500	EP L: 6 + 6 - 4 = 8	-1	400
Ag: 9 + (3x2) - 4 = 11	-2	1000	Den C: 6 + (16/2) - 4 = 10	-1	300L
Cu: 3 + 0 = 3	+1	1200	SLC C: 8 + (10/2) - 4 = 9	-1	300L
Den L: 6 + 0 - 4 = 2	+2	500	Pueb C: 7 + 0 - 4 = 3	+2	300u
SLC L: 9 + 0 - 4 = 5	+1	1200	SF C: 6 + 0 - 4 = 2	+2	600
Pueb L: 7 + 4 - 4 = 7	-1	600	EP C: 10 + 0 - 4 = 6	nc	700
SF L: 8 + 0 - 4 = 4	+1	400			

DEPLETIONS: #3, #6, #10, #13, #16, #18, #30, #41-43, #51, #56-57, #62, #65, #75, #78-79, #83-84, #91, #103-104.

Turn 14a

#1: Prospect deck (#98 & #88). Survey Vaughn-Torrance (-\$400) & Altmosa-Antonito (-\$300).
 #2: Prospect (+1) #22 (-\$800) and #27 (-\$200). Survey(+1) Placerville-Telluride/Rico (-\$900) and South Fork-Pagosa Springs (-\$1500).
 #3: Prospect(+1) #77 (-\$700) & #89 (-\$300). Survey(+1) Carrizozo-Capitan (-\$700), Almagordo-Cloudcroft (-\$1000).
 #4: Prospect C18 (-\$75x70) & B12 (-\$75x34). Survey Manitou Jct-Pueblo (-\$500) and Price-Sunnyside (-\$500).

PLAYER STATUS:

#1: Denver, Cary Nichols, \$31,300, S+2,S.P.P. #14, #15, #56(3 C,D), #66, #67(5 C), #7, #20, #97, #5(0.5 Au), #887, #997.
 #2: Denver, Wayne Morrison, \$10,600, S+1,S.P+1.P, A1, A2, A3, A4, B9, #33, #19, #17(2 Ag), #25, #22, #27.
 #3: El Paso, Debbie Anderson, \$10,200, S+1,S.P+1.P, A19, A20, B22, B21, #83(1 Cu,D), #38(, #39(5 L), #80(6 Ag), #93(5 L), #82(2 Cu), #101(5 C), #77, #89.
 #4: SLC, Paul Zieske, \$34,200, S.S.P+2.P, A5, B12, C18, #53(2 C), #35, #55(12 C), #44(31 C), #54(5 C), #12(4.5 Ag), #106(7 Cu), #13 (3.5 Ag), #24, #52(8 C), #45(6 C).

AVAILABLE CLAIMS:

2 Marysville (Au: \$600/\$200)

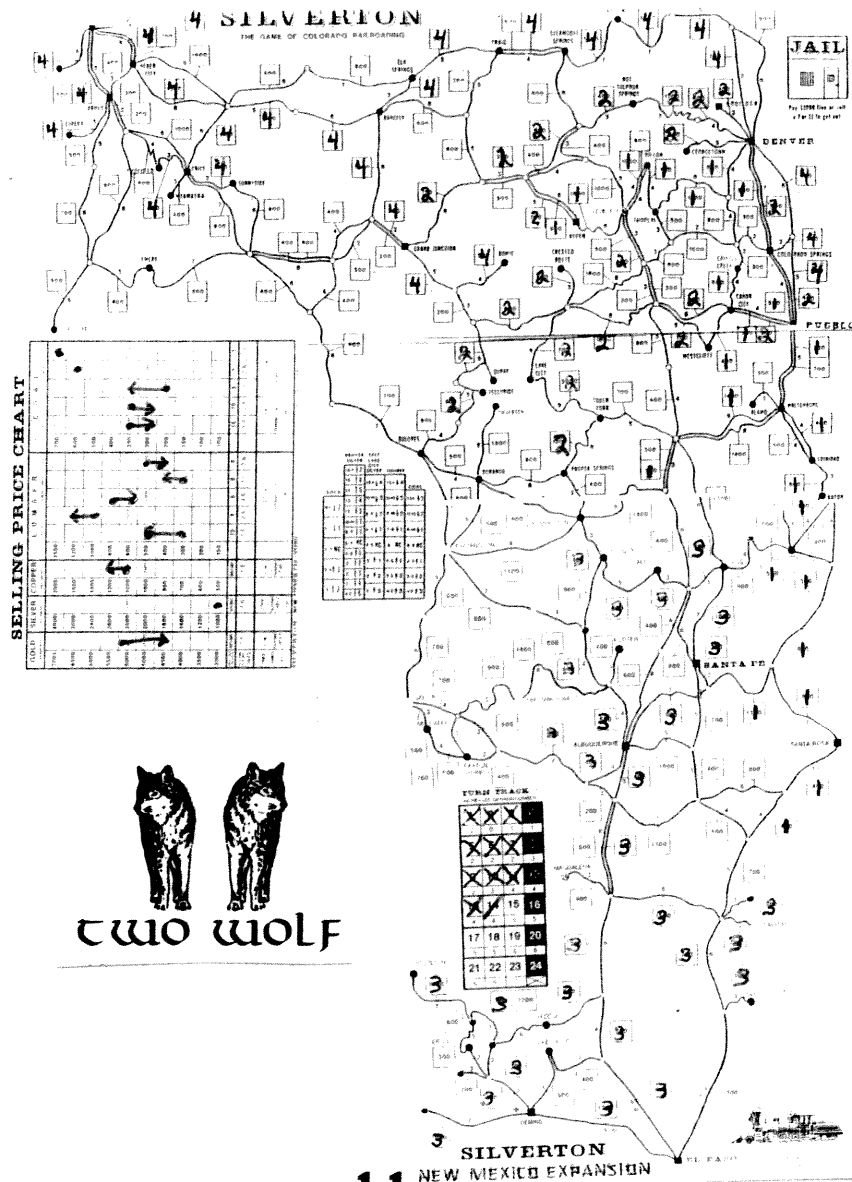
11 Heber City (Ag: \$500/\$250)

81 Silver City (Ag: \$200/\$200)
 90 Mc Gaffey (L: \$200/\$150)
 98? Lee Ranch West (C: \$300/\$100)
PAX: A6, B7, B8, B10, C14a, C15, C16a

88? Tyrone (Cu: \$300/\$100)
 95 Farmington (C: \$400/\$200)
 99 Gallup (C: \$300/\$200)
 The Deck

Due next times are your orders for Turn 14b operations and deliveries and Turn 15a prospecting and surveying.

LEGEND: Claims in **bold** are unworked. Underlined depletions, Leadville. Ag = silver, Au = gold, C = coal, Cu = copper, L = lumber or lower, m = middle, PAX = passenger, u = upper.





MERCHANT OF VENUS

"Graw"
Some Speak!



The Cast:

Andersons: Congrats to Ms. Nar on her victory this game. It was especially ironic, that we were the ones who gave her the winning edge. We could not have reached any other spot on the board except hers, to sell the goods and buy the factory to get the ship ready for the winning turn except Ms. Nars!!! I am not sure what if anything would have happened if the vote was NO for Ms. Nar to have the shield installed since the previous player had not thought about it. Would she have paid a \$40 worth of penaltys some where and wind up with \$ 1998 ?? While the good ship Secretariat flies on to victory?? That I will leave to game historians and or our great GM to answer another day or a few lines down.

1870

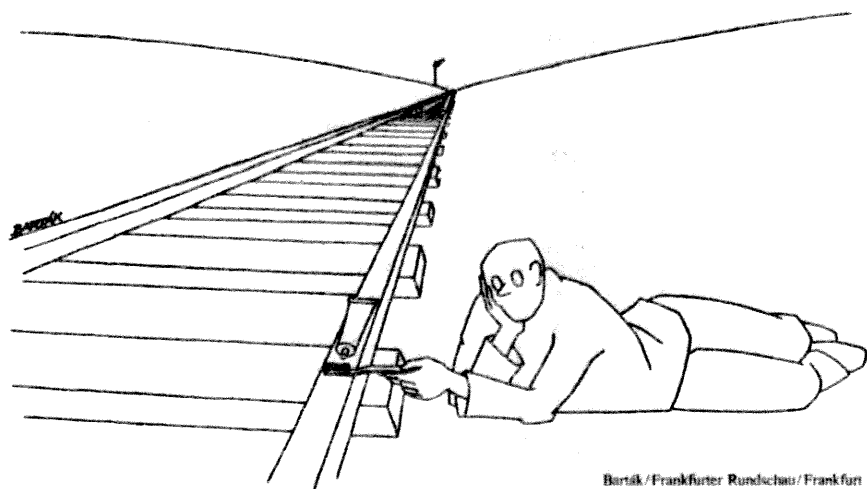
Bart Maverick
We Begin!



The Cast:

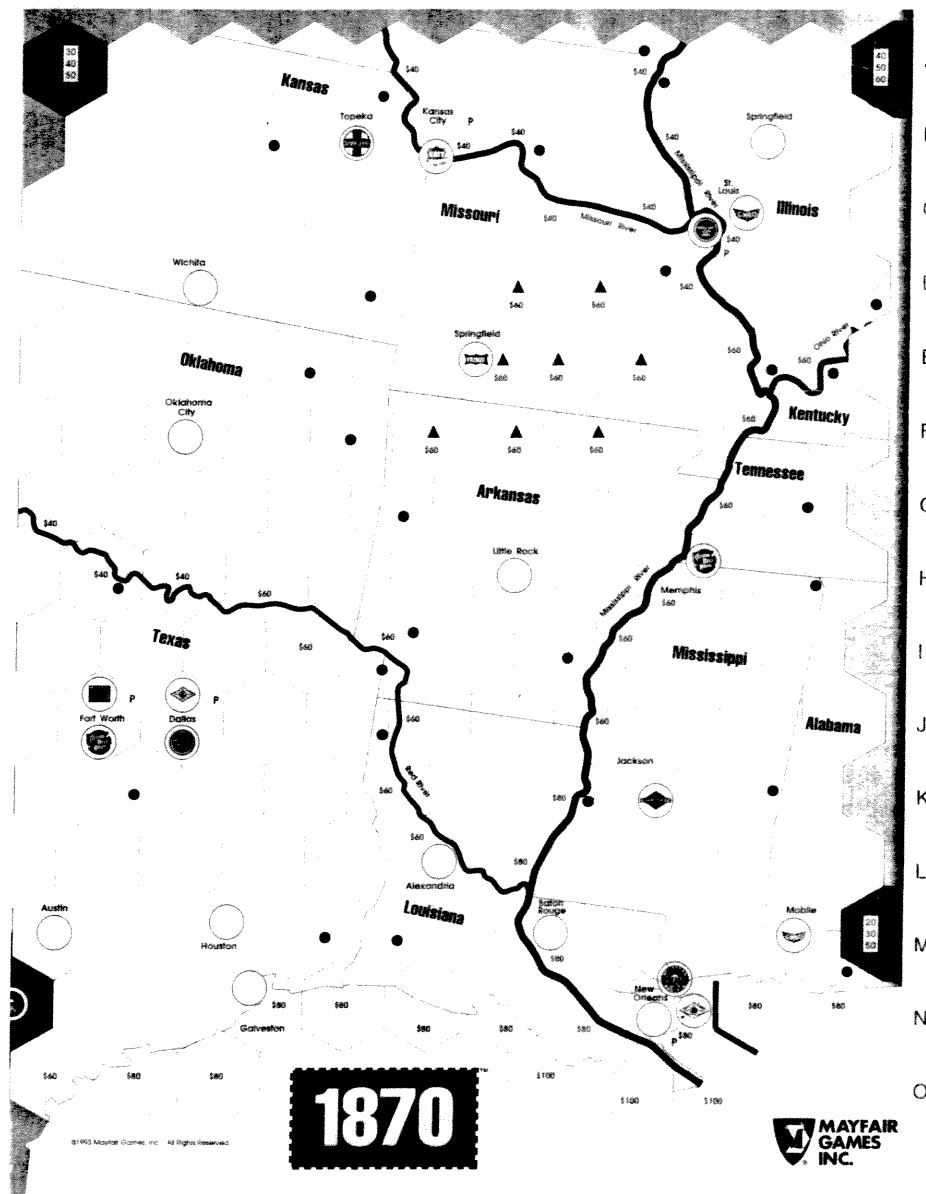
Chris Bailey: \$420. <Priority>
Paul Zieske: \$420.
Brad Martin: \$420.
Mark Frueh: \$420.
Chuck Hanna: \$420.

Due soonest are orders for SR1 and votes on the variant rules, i.e., \$400 Finish, 1830 Diesels, Station Marker Wars, and Historical Start order. This will be a pbm game, but I won't mind if y'all play SR1 pbem.



Bartik/Frankfurter Rundschau/Frankfurt

1 2 3 4 5 6 7 8 9 10 11 12 13 14 15 16 17 18 19 20 21 22



1870

MAYFAIR
GAMES
INC.

1826

SR6-~~END~~

PLAYER STATUS (cert. limit 16)

Chris F365, 4*P-O, 1 Paris, 1 Alsac, 1 Belge (7) <priority>
 Chuck F377, 3*GC, 5*Nord, 1 P-O (7)
 Mark F344, 4*Alsac, 4*Belge (6)
 Paul F372, 6*Paris, 3*Ouest, 1 Nord (8)

CORPORATIONS

Co.	Pres	Price	IO	Pool	Treas	Trains	Cash	Dest	Tokens
P-O	CB	B165	0	0	5	-64	353	yes	G9,I7,1
Paris	PZ	C150a	0	3	0	-64	700	yes	G9,E5,I7,mail in G9
Alsac	MF	C150b	0	5	0	-64	602	yes	G19,L14,C13
GC	CH	C122	5	1	0	+64	61	no*	L14,I13,1
Ouest	PZ	A110	0	0	7	-6	135	yes	G9,2
Belge	MF	E90	0	5	0	-44	698	yes	C13,3
Nord	CH	F75	0	4	0	-64	81	yes	G9,C11,1

* Corporation remains 5-share; + from Algerian

OR 6:

Paris: Play tile #23 in G7 (new track ne); run G9nw-E7-E5-H6 (160) and G9w-H6-I7-J6 (150); pay half-dividends of 16/share; stock to C165; buy 10H-train (-600); buy share from pool (-165); (PZ: 27+96=123; Paris: 700+150-600-165=85)

PHASE CHANGE:

4H-trains obsolete, all non-destinated companies forced to convert, train limit 2, SNCF does not form, 3 Operating Rounds next time, New Corporations when floated are fully vested (10X par), 2nd payout square on edge cities, five (5) 10H trains available, Brown tiles available.

Alsac: Play tile #63 in C13; run B8-C9-C11-B12-C13-C15-C17 (240); pay 24/share dividends; stock to C165b; buy 10H-train for 600; (MF: 14+120=134, CB: 47+24=71; Alsac: 602-600=2).

P-O: Play tile #515 in G9; run G9-I7-H6-H2-I1 (200); pay 20/share dividends (CB: 71+100=171; P-O: 353+100=453); stock to C165c; sell five shares into pool (P-O: 453+825=1278; price unchanged).

GC: Play tile #4 in M17(e-w, -60); run M19-M17-M13-L14-N16 (180); pay 18/share (CH: 42+54=96; GC: 61-60+90=91); stock to D122; sell 3 shares into pool (91+366=457; price unchanged).

Ouest: Play tile #63 in H6; run G9w-H6-H2-I1 (180); withhold revenue; stock to A100; buy 10H-train; (Ouest: 465+180-600=45).

Est: Play tile #9 in G11(e) and tile #8 in G13(w-se); no train, no run, no dividends; stock to A100; buy 6H train from P-O for \$423; (Est: 550-423=127; G-O: 423+1278=1701)

PLM: Play tile #9 in H10(se) and tile #8 in I11(nw-e); no train, no run, no dividends; stock to B90; take F500 loan; stock to B82; Buy 10H-train; (PLM: 500+500-600=400).

Belge: Play tile #63 in C11; place Belge token in C11 (-20); no train, no run, no dividends; stock to E82; buy 10H train for 600; (Belge: 698-20-600=78).

Nord: Play tile #611 in B12; run G9-D10-C11-B12-A13 (230); pay 23/share (CH: 96+115=211); stock to E82b; buy 10H-train from PLM for F1; (Nord: 81-1=80; PLM: 400+1=401).

OR6b

Paris: Play tile #19 in F8 (new track e-sw); run G9nw-E7-E5-H6 (190) and G9w-H6-I7-J6-K5-M3-N2 (290); pay half-dividends of 24/share (240 to Paris, 24/share to owners); stock to C180a; buy share from pool (-180); (PZ: 123+144=267; Paris: 85+240+24-180=169).

Alsac: Play tile #14 in I13 (new track e-w); run G9-I13-L14-M13-M17-M19 (240) and B8-B10-B12-C13-C15-C17 (220); pay 46/share dividends; (CB: 171+46=217; MF: 134+230=364); stock to C180b.

P-O: Play tile #28 in G5 (new track e); token in H6 (-F20); no train, no run, no dividends; stock to C150; buy two E trains (P-O: 1701-20-800-800=81).

PHASE CHANGE:

Special Powers tokens removed (applies to mail and also extra train for GC); 6H trains scrapped; third off-board values are now used; SNCF forms as follows:

SNCF forming companies:

GC CH D122 5 2 -- 457 0 L14,I13,1

Est CB A100b 0 5 -- 127 0 G9,3

PLM CH B82 0 5 -- 401 1 G9,3

CB: 5 Est shares (5 shares total, becomes 2 SNCF shares)

CH: 3 GC shares, 5 PLM shares (8 shares total, becomes 4 SNCF shares; CH assumes presidency)

SNCF: trades in 12 treasury shares of GC, Est, and PLM for 4 SNCF shares and 2 bonds (in SNCF treasury); six pool shares of GC and Est traded for 3 Bonds in the Bank Pool; remaining 5 bonds placed in SNCF treasury. SNCF starting value F111, therefore stock value at A110. SNCF treasury: 457+127+401=985. One loan from PLM inherited by SNCF; accordingly, stock value moves left one space to A100b; one bond placed in bank pool. SNCF receives an additional F400 (985+400=1385)

for undistributed shares; shares move from treasury to pool. SNCF tokens go in the former home stations: Paris (G9), Paris (G9) and Lyon (L14); SNCF token MAY also be placed in Dijon (I13) -- and subsequently IS placed in Dijon; three additional tokens also issued. SNCF will operate normally as none of the forming companies have operated.

Ouest: Play tile #41 in H7 (new track connects e-ne; run H9w-H6-H2-I1-K5-M3 (240); pay 24/share dividends; (PZ: 267+144=411; Ouest: 45+96=141); stock to A110.

SNCF: Play tile #63 in L14; no train, no run, no dividends; stock to A90; pay F40 to bank for bonds in the pool; buy E-train (SNCF: 1385-40-800=545).

Belge: Play tile #63 in E15; run B8-B10-B12-C11-C13-D14-E15-F16-G19 (310); pay 31/share dividends; (MF: 364+186=550; PZ: 411+31=442); stock to E90.

Nord: Play tile #8 in B14(w-se, -40); run G9-D10-C11-B12-B10-B8 (270); pay 27/share dividends; (CH: 211+135=346; Nord: 80-40=40); stock to E90b.

SR7

Chuck buys P-O (346-150=196)

Mark buys President's share of Midi for 220 (550-220=330)

Paul buys P-O (442-150=292)

Chris buys P-O (217-150=67)

Chuck buys P-O (196-150=46)

Mark buys Midi share (330-110=220)

Paul buys P-O (292-150=142); P-O sold out

Chris passes. Chuck sells SNCF, buys Belge (46+90-90=46; SNCF to B82)

Mark buys Midi share (220-110=110)

Paul sells 1 Paris, buys 1 Alsac (no price change)

Chris & Chuck passe. Mark buys Midi share (110-110=0); Midi floats

Paul buys Belge (142-90=52)

All pass. Chris has priority P-O sold-out, rises to B165; 5 unsold Midi shares in Pool.

OR7a

Paris: Play tile #23 in F10 (new track w); run G9nw-E7-E5-H6-H2-I1 (230); pay 23/share dividends; (PZ: 52+115=167; Paris: 169+46=215); stock to B200; buy share from bank pool (215-200=15).

Alsac: Play tile #9 in M11(w); run G9se-I13-L14-M13-M17-M19 (290); pay 29/share dividends; (MF: 0+145=145; CB: 67+29=96; PZ: 167+29=196); stock to B200b.

P-O: Play tile #23 in H8 (new track W); run G9sw-H6-I1 (340) and G9w-H6-E5 (340); pay 68/share dividends; (CB: 408+96=504; CH: 136+46=182; PZ: 136+196=332); stock to B180.

Ouest: Play tile #87 in D10 (new track nw and e); token in H6 (-40); run G9w-H6-H2-I1-K5-J6-I7 (230); pay half dividends of 12/share; (PZ: 332+72=404; Ouest: 141-40+110+48=259); stock to A122.

Midi: Play tile #9 in M5(e, -40) and tile #9 in M7(e); no train, no run, no dividends; stock to A100; purchase 1-"E" train; (Midi: 1100-40-800=260).

Belge: Play tile #611 in C15(e); run train B8-B10-B12-B14-C15-C13-C11-D10-G9ne (360); pay 36/share dividends; (MF: 145+216=361; PZ: 404+72=476; CH: 182+36=218); stock to D100.

Nord: Play tile #3 in D12(w-nw); run G9-D10-D12-C11-B12-C15-C17 (290); pay 29/share dividends; (CH: 218+145=363); stock to D100b.

SNCF: Play tile #47 in M15; run M19-L14-I13-G9 (500); pay F40 bond interest; withhold; stock to B75; buy TGV; (SNCF: 545-40+500-1000=5).

PHASE CHANGE: Grey tiles available, off-board locations to maximum. "E" trains run for 5 cities; non-doubled TGV trains run 3 Cities doubled

OR7b

Paris: Play tile #516 in G9; run H6-H2-I1-K5-J6-I7-G9sw (260); pay 26/share dividends; (PZ: 476+130=606; Paris: 15+78=93); stock to B220; buy 10H from Ouest for F2; sell 3-Paris shares to pool for 660 - price remains at B220; (Paris: 93-2+660=751, Ouest: 259+2=261).

Alsac: Play tile #513 in L14; run G9se-I13-L14-M13-M17-M19 (370); pay 37/share dividends; (MF 361+185=546; CB: 504+37=541; PZ: 606+37=643); stock to B220b.

P-O: Play tile #513 in C11; run C17-C15-B12-C11-H6 (280) and E5-H6-I1-I7-G9sw (270); pay 55/share dividends; (CB: 330+541=871; CH: 110+363=473; PZ: 110+643=753); stock to B200.

Ouest: Play tile #204 in C9 (new track se and sw); no train, no run, no dividends; stock to A110; take 2 loans for F1000; price moves two columns to the left for the loans to A90; buy TGV; buy 10H train from Paris for F250.

Belge: Play tile #513 in C13; run B8-B10-B12-C15-C13-C11-D10-G9ne (460); pay 46/share dividends; (MF: 546+276=822; CH: 473+46=519; PZ: 753+92=845); stock to D110.

Nord: Play tile #87 in D14 (new track ne and e); token in C13 (-20); run G9-D10-C11-C13-C15-B14-B12-B10-B8 (460); pay 46/share (CH: 519+230=749); stock to D110b; (Nord: 40-20=20).

Midi: Play tile #9 in M9(e); token in L14 (-120); run G9se-I13-L14-M13-M19 (360); pay 36/share dividends; (MF: 822+180=1002); stock to A110; Midi: 260-120=140.

SNCF: Play tile #24 in I11(new track to se); run G9-I13-L14-M13-M19 (360) and G9-I13-L14 (380); pay F40 in bond interest, reducing run to 700; pay half dividends 35/share; (CH: 749+105=854, CB: 871+70=941); stock to B90; buy 3 shares from pool; (SNCF: 5+350-270=85)

OR7c

Paris: Play tile #45 in F8; run G9nw-D10-D12-C11-B12-C15-C17 (380); pay 38/share dividends; (PZ: 847+190=1037); stock to B245; buy TGV (-1000).

Alsac: Play tile #8 in E13(e) (e-sw); run B8-B10-B12-C15-C13-C11-D10-G9ne (460); pay 46/share dividends; (MF: 1002+230=1232; CB: 941+46=987; PZ: 1035+46=1081); stock to B245b.

P-O: Play tile #24 in L4(ne, new track se); run C17-C15-B12-C11-H6 (280) and E5-H6-I1-I7-G9sw (270); pay 55/share dividends; (CB: 330+987=1317; CH: 110+854=964; PZ: 110+1081=1191); stock to B220;

Belge: Play tile #57 in F12(ne-sw, -40); run B8-B10-B12-C15-C13-C11-D10-G9ne (460); pay 46/share dividends; (MF: 1232+276=1508; PZ: 1191+92=1283; CH: 964+46=1010); stock to D122; (Belge:78-40=38).

Nord: Play tile #24 in G11(new track ne); run G9-F12-E15-D14-C13-B12-C11-C9-B8 (480); pay 48/share dividends; (CH: 1010+240=1250); stock to D122b.

Midi: Play tile #63 in I13; token in M13 (-20); run G9se-I13-L14-M13-M19 (370); pay 37/share dividends; (MF: 1508+185=1693); stock to A122; (Midi: 140-20=120).

SNCF: Play tile #23 in J12; run G9-I13-L14-M13-M19 (370) and G9-L14-M19 (600); pay F40 bond interest; pay 97/share dividends; (CH: 1250+291=1541; CB: 1317+194=1511); stock to B100; pay off 3 bonds; (SNCF: 85-40+291-300=36).

Ouest: Play tile #47 in F10; run G9w-D10-D12-C11-B12-B10-B8 (370) and G9w-C11-B8 (600); pay 100 interest from revenue (970-100=870); pay half-dividends of 44/share; (PZ: 1283+264 = 1547; Ouest: 11+430+176=617); stock to A100; pay off 1 loan (617-500=117); stock to A110.

SR8

Chris buys SNCF from treasury (CB: 1511-100=1411; SNCF: 36+100=136)

Chuck buys SNCF from treasury (CH: 1541-100=1441; SNCF: 136+100=236)

Mark buys Paris from pool (MF: 1693-245=1448)

Paul buys Paris from pool (PZ: 1547-245=1302)

Chris buys SNCF from treasury (CB: 1411-100=1311; SNCF: 236+100=336)

Chuck buys SNCF from pool (CH: 1441-100=1341)

Mark buys Paris from pool (MF: 1448-245=1203)

Paul buys Alsac from pool (PZ: 1302-245=1057)

Chris buys SNCF from pool (CB: 1311-100=1211); SNCF sold out

Chuck buys Paris from pool (CH: 1341-245=1096)

Mark buys Paris from pool (MF: 1203-245=958); Paris sold out

Paul sells 1 Belge (no price change), buys 1 Alsac from pool (PZ: 1057+122-245=934)

Chris buys Ouest from treasury (CB: 1211-110=1101; Ouest: 117+110=227)

Chuck buys Ouest from treasury (CH: 1096-110=986; Ouest: 227+110=337)

Mark sells 1 Belge (no price change), buy 1 Alsac from pool (MF: 958+122-245=835); Alsac sold out

Paul buys SNCF bond from bank pool (PZ: 934-100=834)

Chris buys Ouest from treasury (CB: 1101-110=991; Ouest: 337+110=447)

Chuck buys Ouest from treasury (CH: 986-110=876; Ouest: 447+110=557); Ouest sold out

Mark & Paul pass. Chris buys Belge from pool (CB: 991-122=869)

Chuck buys Nord from pool (CH: 876-122=754)

Mark & Paul pass. Chris buys Belge from pool (CB: 869-122=747)

Chuck buys Belge from pool (CH:754-122=632); Belge sold out

Mark & Paul pass. Chris buys Nord from pool (747-122=625)

All pass. Chuck has priority. Paris, Alsac, P-O, Belge, SNCF all sold-out, float up one row

respectively. Ouest also sold out, but already on top row so it doesn't move.

OR8a

Paris: Play tile #63 in I7; run G9nw-D10-D12-C11-B12-C15-C19 (380) and C9nw-C11-B8 (600); pay 98/share dividends; (PZ: 834+588=1422; MF: 835+294=1129; CH: 632+98=730); stock to A300.

Alsac: Play tile #14 in F12 (new track se and nw); run G9e-F12-E15-D14-C13-C11-B12-B10-B8 (490); pay 49/share dividends; (MF: 1129+294=1423; PZ: 1422+147=1569; CB: 625+49=674); stock to A300b.

P-O: Play tile #23 in M5(w, new tile nw); run B8-B12-C11-H6-E5 (300) and G9sw-H6-I7-M13-M19 (350); pay 65/share dividends; (CB: 390+674=1064; CH: 130+730=860; PZ: 130+1569=1699); stock to A270.

Belge: Play tile #63 in F12; run G9e-F12-E15-D14-C13-C11-B12-B10-B8 (500); pay 50/share dividends; (MF: 1423+250=1673; CB: 1064+100=1164; CH: 860+100=960; PZ: 1699+50=1749); stock to C150.

Nord: Play tile #24 in G13(se, new track nw); run G9-F12-E15-D14-C13-B12-C11-C9-B8 (500); pay 50/share dividends; (CH: 960+300=1260; CB: 1164+50=1214); stock to C135.

Midi: Play tile #8 in H14(sw, new track sw and nw); run G9-I13-L14-M13-M17 (370); pay 37/share dividends; (MF: 1673+185=1858); stock to A135.

Ouest: Play tile #203 in E7 (new track ne); token in C11 (-120); pay interest (-50); run B8-B12-C11-H6-G9sw (380) and B8-C11-G9w (600); pay half dividends of 49/share; (PZ: 1749+294=2043; CB: 1214+98=1312; CH: 1260+98=1358); stock to A122; pay off loan (-500); stock to A135; (Ouest: 557-120-50+490-500=377).

SNCF: No tile play; run G9-F12-I13-L14-M19 (380) and G9-L14-M19 (600); pay F10 bond interest to PZ; pay 98/share dividends; stock to A122; redeem bond from PZ. (CH: 1358+490=1848; CB: 1312+490=1802; PZ: 2043+10+100=2153; SNCF: 336-10-100=226).

OR8b

Paris: Play tile #23 in E11; run G9nw-F12-E15-D14-C15-B12-A13 (360) and G9nw-F12-B8 (560); pay 94/share dividends; (PZ: 2153+564=2717; MF: 1858+282=2140; CH: 1848+94=1942); stock to A330.

Alsac: No tile lay; run G9e-F12-E15-D14-C15-C13-B12-B10-B8 (480); pay 48/share dividends; (MF: 2140+288=2428; PZ: 2717+144=2861; CB: 1802+48=1850); stock to A330b.

P-O: Play tile #4 in D16 (ne-sw, -F60); run C17-E15-F12-H6-G9sw (340) and M19-M13-I1-H6-I7 (270); pay 61/share dividends; (CB: 1850+366=2216; PZ: 2861+122=2983; CH: 1942+122=2064); stock to A300; (P-O: 81-60=21).

Belge: No tile lay; token in B12 (-20); run London-to-Paris for 500; pay 50/share dividends; (MF: 2428+250=2778; CB: 2216+100=2316; CH: 2064+100=2164; PZ: 2983+50=3033); stock to C165; (Belge: 38-20=18).

Nord: No tile lay; run London-to-Paris for 500; pay 50/share dividends; (CH: 2164+300=2464; CB: 2316+50=2366); stock to C150.

Midi: No tile lay; token in I13 (-60); run Paris-to-Milan for 380; pay 38/share dividends; (MF: 2778+190=2968); stock to A150; (Midi: 120-60=60).

Ouest: Play tile #58 in I3 (w-se, -40); run B8-B12-C11-H6-G9sw (380) and B8-C11-G9w (600); pay 98/share dividends; (PZ: 3033+294=3621; CB: 2366+186=2552; CH: 2464+186=2650); stock to A150; (SNCF: 377-40=347).

SNCF: No tile lay; run for 980; pay 98/share dividends; (CB: 2552+490=3042; CH: 2650+490=3140); stock to A135.

OR8c

Paris: Play tile #141 in I3 (new track e); run G9nw-F12-E15-D14-C15-B12-A13 (360) and C9nw-F12-B8 (560); pay 94/share dividends; (PZ: 3621+564=4185; MF: 2968+282=3250; CH: 3140+94=3234); stock to A360.

Banque has busted; game will end after this operating round.

Alsac: No tile lay; run G9e-F12-E15-D14-C15-C13-B12-B10-B8 (480); pay 48/share dividends; (MF:3250+288=3538; PZ:4185+144=4329; CB:3042+48=3090); stock to A360b.

P-O: No tile lay; run C17-E15-F12-H6-G9sw (340) and M19-M13-I1-H6-I7 (270); pay 61/share dividends; (CB: 3090+366=3456; PZ: 4329+122=4451; CH: 3234+122=3356); stock to A330.

Belge: No tile lay; run London-to-Paris for 500; pay 50/share dividends; (MF: 3538+250=3788; CB: 3456+100=3556; CH: 3356+100=3456; PZ:4451+50=4501); stock to C180.

Nord: No tile lay; run London-to-Paris for 500; pay 50/share dividends; (CH: 3456+300=3756; CB: 3556+50=3606); stock to C165.

Midi: No tile lay; run Paris-to-Milan for 380; payout 38/share dividends; (MF: 3788+190=3978); stock to A165.

Ouest: No tile lay; run B8-C9-D10-C11-B12-C15-D14-E15-C17 (440) and B8-C11-G9w (600); pay 104+6=110 (+6 for 8.2 run correction)/share; (PZ: 4501+660=5161; CH: 3756+220=3976; CB: 3606+220=3826); stock to A165b.

SNCF: No tile lay; run for 980; pay 98/share dividends; (CB: 3826+490=4316; CH: 3976+490=4466); stock to A150. **GAME OVER.**

CORPORATIONS

Co.	Pres	Price	Pool	Treas	Trains	Cash	Tokens
Paris	PZ	A360a	0	0	XT	1	G9,E5,I7
Alsac	MF	A360b	0	0	-X	2	G19,L14,C13
P-O	CB	A330	0	0	EE	21	G9,I7,H6
Belge	MF	C180	0	0	-X	18	C13,C11,B12,I
Nord	CH	C165	3	0	-X	20	G9,C11,C13
Midi	MF	A165a	5	0	-E	60	M3,L14,M13,I13,I
Ouest	PZ	A165b	0	0	XT	337	G9,H6,C11
SNCF	CH	A150	0	0	-TE	226	G9,G9,L14,I13,I4

--continued on p3

ON DECK

1835: Hanna, Zieske

AGE OF RENAISSANCE: Copeland, Frueh

BALKAN WARS: K Wilson, Dave A

CIRCUS MAXIMUS: Nichols, Zieske, Fryling, Anderson (need 1 to 7 more)

COLONIAL DIP: Burgdorf, Copeland, Nichols, Dave A (need 3 more)

GUNSLINGER: Scott, Fowble, R Fisher, Dave A; need 3 or 4 more

HISTORY OF THE WORLD: Anderson, Khaoz, Wilson, Martin

LIFT-OFF!: York, Dave Anderson

MAGIC REALM: Butitta, Deb A, Teh (need 1-5 more)

PUERTO RICO: Martin

RAIL BARON: Martin, York

SAMURAI (AH): Copeland

WIZARD'S QUEST: Crowe(?), Fisher, Lenoir, Teh(?), Anderson?

OTHER POSSIBILITIES: 1829 (N OR S), 1830, 1856, 4000 AD*, AIR BARON, CIRCUS IMPERIUM, CIRCUS MINIMUS, DOWN WITH THE KING, GODSFIRE, KAMAKURA, MONSTERS RAVAGE AMERICA, PLANET MINERS, STELLAR CONQUEST, SUCCESSORS, TITAN,

*Guest GM

OUR SUBSCRIBERS

Dave & Debbie Anderson, 20832 Tuck Rd, Site 32, Farmington Hills, MI 48336; (248)473-7482;

ravenclawnerdz@sbcglobal.net

Christopher Bailey, 264 Fifth Avenue, Apartment 3C, New York, New York 10001;

(917) 553-0070; christopher_bailey@yahoo.com

Alan Bargender; alanmb777@hotmail.com

Paul Barrett, UK; pdb@higanadragon.plus.com

John Boardman, 234 East 19th St, Brooklyn, NY 11226-5302

Martin Burgdorf, UK; mjb@astro.livjm.ac.uk or martin_burgdorf@hotmail.com

Tom Butcher, 2129 Pinebrook Trl, Cuyahoga Falls, OH

thomas-butchersbcglobal.net

John Butitta, 339 Ninth, Neenah, WI 54956; (414) 725-7218; docjob@tds.net

Rick Copeland, 1531 Pack Horse Rd, Winchester, VA 22603; (540) 888-4420;

cope655321@dishmail.net

Bob Dowrey, 76 Potter Ave., Orchard Park, NY 14127; dowreyhome@adelphia.net

Ron Fisher, 210 Normandy Dr, Wilmington, NC 28412; (910) 395-8330; skylark3@charter.net

Mark Frueh, 1128 Olympus Dr, Naperville, IL 60540; (630) 357-7780; mark_frueh@msn.com

Jim and Marcia Fryling, 5444 Bonnie, Kentwood, MI 49506; james_fryling@cornerstone.edu

Chuck Hanna, 379 Wilett Ct, Severna Park, MD 21146-1912; (410) 544-3077;

cchanna76@yahoo.com

Chris Hassler, 2000 S Armour Ct, La Habra, CA 90631; chassler@roadrunner.com

Tom Howell, 365 Storm King Rd, Port Angeles, WA 98363; (360) 928-9698;

off-the-shelf@olympus.net

Doug Kent, 11111 Woodmeadow Pkwy #2327, Dallas, TX 75228; doug@whiningkentpigs.com

Laird Khaoz, 20832 Tuck Rd, Site 32, Farmington Hills, MI 48336;; kblooderow@yahoo.com

Andy Lischett, 2402 Ridgeland Ave, Berwyn, IL 60402

Brad Martin, Australia; westfront@hotmail.com

Wayne Morrison, LTISI-ASAC Khamis 05267, 7150 Troy Hill Dr, Elkridge, MD 21075;

thomascatsa@yahoo.com

Cary Nichols, 756532-938 S FM 1673, Snyder, TX 79549-8812.

Paul Saunders, 6 North Hill Dr, Carriere, MS 39426; (601) 798-2347; paul_saunders@bellsouth.net

Mike Scott, 4040 E. Piedmont Dr, Space 61, Highland, CA 92346; (909) 864-4343;

mikesmag@sbcglobal.net

Jack & Rose Shacklett, 365 Hobbs-Reesor Rd, Vine Grove, KY 40174; (502) 828-4281;

pilotshack@yahoo.com

Robert Skynner, thebagge@yahoo.co.uk

Gina Teh; lone_hammy@yahoo.com.sg

Kevin Wilson, 18623 Santa Maria Dr., Baton Rouge, LA 70809-6702; (225) 751-3857;

ckevinw1@cox.net

Andrew York, PO Box 201117, Austin, TX 78720-1117; wandrew88@gmail.com

Paul Zieske, 3501 Keenan Lane, Glenview, IL 60025; (847) 498-9237; zieskep@juno.com

Rudy Zodda, 7 Hansen Ave, New City, NY 10956; (845) 708-9056; rzodda@aol.com



DEADLINE FOR MOST GAMES IS 1800 CENTRAL TIME 1 Aug 08

The Bottom Line

This is *BORIS THE SPIDER*, a 'zine dedicated to the play of multiplayer games. BORIS is usually published following the first Friday of the month by Paul Bolduc, 203 Devon Ct, Ft Walton Beach, FL 32547-3110 and currently has a subscription price of \$12.75 for 12 issues in hardcopy in the US. A hardcopy sub will also include an e-mail sub. Make checks payable to "Paul Bolduc". BORIS can be reached at (850) 863-9081, or prbolduc@aol.com. If phoning, expect to be greeted by an answering machine. If we're here, not engaged in an epic computer battle or enthralled in baseball, hockey, or college football, and recognize your voice, you may get to talk to a real human, so don't despair and hang up upon hearing our recorded message (it changes every power outage). Visit the BORIS Website at:

http://members.cox.net/Boris_Spider/BorisHome.html

GAME OPENINGS ELSEWHERE

BLUT UND EISEN (Tom Butcher): Openings in whatever you may want to GM. Sub fee: 90¢ to \$1.20 an issue depending on size. Last issue received: #137, deadline 21 Jun 08.

CHEESECAKE (Andy Lischett): *DIPLOMACY*. No game or sub fee. Last issue received: #280, 28 Apr 08, deadline 9 Jul 08.

ETERNAL SUNSHINE (Doug Kent): *DIPLOMACY* and *BALKAN WARS VI*. Last issue posted: #18, Jul 08, deadline 29 Jul 08. <http://www.whiningkentpigs.com/dw/eshtml18.htm>

GRAUSTARK (John Boardman): Standby players for *DIPLOMACY* wanted. Game fee/sub for starting players \$35 for duration of the game, For non-players, \$15 for 10 issues. Last issue found: #784, 8 Dec 07, deadline 4 Jan 08.

S.O.B. (Chris Hassler): Openings in *GUNSLINGER*, *MERCHANT OF VENUS*, *POWER-GRID*, *HISTORY OF THE WORLD*, *INDUSTRIAL WASTE*, *OUTPOST*, *MACHIAVELLI*. Sub fee: \$2/issue. Last issue received: #145, Jul 2008, deadline 22 Jul 08. See <http://homepages.roadrunner.com/sobhome/index.html>

WESTERN FRONT (Brad Martin): Openings in *CARTAGENA*, *CAYLUS*, *DARK CONTINENT*, *EMPIRE BUILDER*, *EURORAILS*, *FAIR MEANS OR FOUL*, *HACIENDA*, *LORDS OF THE SIERRA MADRE*, *MACHIAVELLI*, *MONTGOLFIERE*, *ORIGINS OF WWII*, *PAX BRITANNICA*, *PRINCES OF FLORENCE*, *PUERTO RICO*, *RAILWAY RIVALS*, *SAMURAI (HIG)*, *SANTIAGO*, *SETTLERS OF CATAN*, *SHANGHAI TRADER*, *TIKAL*, *TRANSAMERICA*. Sub fee: free. Last issue received Jun/Jul 08, #95, deadline 1 Aug 08. See <http://groups.yahoo.com/group/wfront>

