



BORIS THE SPIDER

A Journal of Duplicitous Doings,
Raw Power, and Naked Greed

*"Oh, what a tangled web we weave
When first we practice to deceive!"*
--Sir Walter Scott--



VOLUME VII, #24

(#208)

20 Dec 02

We're Late Again! HAPPY HOLIDAYS!

Due to my inability to get a coherent stream of thought together for a 5000 word term paper on "emergy" (yes, spelled with an "m"), this issue has been delayed about a week. Then when the prof dropped a take-home final on us, there went another couple of days. Just as well, as the "usual" deadline would've been 3 Jan -- way too close to the holiday season.

And it may only get worse in the next few months. I'm signed up for a course that will demand weekly 1000 word papers and a 10-15 page, single-spaced course term paper. This is the final course (given that the term paper isn't unworthy nor my take-home final a complete bust) I need to complete a Certificate in Environmental Policy and Management from the University of Florida. I'm already in trouble in tht the local bookstore can't promise delivery of the text until after the first paper is due. And I'd hoped to get one or two ahead during the holidays.

GAME OPENINGS:

1835: Don Chinnery's position (including Dir of BY) may be open.

CIRCUS MAXIMUS: We have two 1-1-1-1 chariots available.

BORIS'S BULLETIN BOARD

THOUGHT FOR THE MONTH: "Statesmen rise and fall on the smallest of actions." -- Mark Helprin

Railgamers: Don't miss the Chattanooga Rail Challenge (aka Chattanooga Choo-choo Con, Ref 1), 23-26 Jan 03 at the Country Suites off the Shallowford Rd Exit of I-75). As it's only a six-hour/one tank of gas drive from here, I've been there the last few years and have met pbm rail gaming foes Mark Derrick (host), Mark Frueh, and Michael Quist there. I learned and fell in love with UNION PACIFIC there. The Saturday night AGE OF RENAISSANCE game is always a hoot, but since Ken Gutermuth has moved to Dallas and Mark Frueh won't be attending -- who's to say if it will happen? In any case, check out the flyer on p 13.

BOOS & KUDOS

This month's Madame Boldue Press Excellence Award (and free issue) goes to Rick Copeland for his "Genoa-Paria" dispatch in AGE OD RENAISSANCE.

This month's Ms Nar Super-Suday Bomb is lobbed at James Kanne for orders that came in over two weeks late.

REFERENCES:

1. <http://home.chattanooga.net/~derrick/gaming.htm>

PERSONAL COMMUNICATION HERE (maybe):

Deadline for most games is 1800 CST 10 JAN 03



AUSTRIA INVADED!!
Turks poised for Counterattack
Spring 1902

XVI
2002C

MIRKWOOD: Russia seems to have a two-front war on his hands. Germany redeploys aggressively in the West but has left a fleet in the East for protection from the fallout in Scandinavia. The other powers are warily eying each other waiting for a provocation.

TROOP MOVEMENTS:

AUSTRIA (R Fisher): A Gal-Vie, A Ser S F Alb-Gre, F Alb-Gre, A Bud H;

ENGLAND (Morrison): A Nwy-Fin, [F Nwg-Nwy], F Nth-Ska, F Lon-Nth;

FRANCE (Boyum): [A Spa-Mar], A Bur S A Par-Pic, F Por-Mid, [F Mar-Spoisc], A Par-Pic;

GERMANY (Anderson): A Den S A Ber-Kie, A Bel-Ruh, F Hol-Bel, A Ber-Kie, A Mun S A Bel-Ruh, F Kie-Bal;

ITALY (K Wilson): A Tun H, A Ven-Pie, F Ion H, F Nap-Tyn;

RUSSIA (Fowble): A War-Gal, [A Rum S A War-Gal], F Sev S A Rum, F Swe S F StP(nc)-Nwy, A Mos-StP, F StP(nc)-Nwy;

TURKEY (Nichols): F Bla S A Bul-Rum, [A Bul-Rum], [A Con-Bul], A Ank-Arm;

Orders in brackets fail; oth = off the board, r-??? = must retreat somewhere.

Due next time: Your orders for Fall 1902 and Press.

EMBASSY BEAT

Austria to Italy: Hey, don't look now but the French are coming. So naturally that fleet in Ion Sea should just ignore what's going on in Greece. Oh and look-there's no one in TRI to keep you from protecting your western border.

Austria to Turkey: You actually think I'll suport you into Rum after the Greece debacle?

Austria to Russia: Okay, I'm moving away from you so lets play nice now.

Austria to Germany: Hey, better watch what your doing or World War I might get started. France looks pretty uppity and you should hear what he's saying about you.

Austria to France: Just ignore what I said to Germany, okay?

Austria to England: Looks like your on the short end of the stick-hope you got a good thing going with France cause I'm thinking Russia and Germany might have a hankering for Yorkshire pudding for the holidays.

Italy to France: You talk peace but prepare for war. Didn't someone famous encourage just that course of action? If you aren't nice I'll ask the Pope to cancel shipments of sacramental wine. So watch out.

Italy to Germany: 3 builds! I doubt the rest of the board know just how dangerous that makes you. Well, maybe they do now. :-)

Russia to Austria: You claim you want to ally, then you try to grab Rumania. Not only do you antagonize me, you give up an almost automatic conquest of Greece. How odd.

T-A: Peace!

T-R: I must protect my borders. Hopefully, my orders to RUM will bounce, leaving you in control there.





Spring 1528

RAGNOCITTA: Legion must have been the French King's sins that he needed to send 30d to the Holy See. The Turkish and Venetian command and control structures are showing signs of being overextended. How will Pope Kevin use the windfall?

TROOP MOVEMENTS

Papal A ROM retreats to PAT. Turkish F LA retreats to IS. Florence (40d) maintains all, builds none (-27d). France (30d) disbands all and gives 30d to Papacy. Papacy (7+30d) maintains A PER & G PER (-6d). Turkey (30d) maintains all but F COR & A ALB (-24d), and builds F DUR & G ALB (illegal) (-6d). Venice (62d) maintains all (-33d) and builds A PAD, A TRE and F VEN (-9d).

FLORENCE (Cole, 23d): F Cor-LS, F Pisa S F Cor-LS, A Luc S A Mod, A Mod S A Luc, G Gen H, F Pio S A Sic, A Are S A Flo, A Flo S A Sic, [A Sic-Pat].

FRANCE (McConnell, 0d): No units;

PAPACY (K Wilson, 31d): A Per H, G Per S A Per;

TURKEY (Scott, 0d): A Rome, S F TS-Pat, F Anc S F Dur-LA, F TS-Pat, A Spo-Per, F Otr S F Dur-LA, [A Alb-Her]nsu, F IS S F Dur-LA, [A Dal S A Alb-Her]nsu, F Dur-LA, G Anc S F Anc, [G Alb=A]nsu, [F Sar-TS]nsu).

VENICE (Vasseur, 18d): A Cre S G Mil=A, [F LA S A Urb-Dal]r-???, A Mil-Tyr, A Bol-Urb, G Mil = A, A Sla-Carin A Bos-Her, A Par H[u], F UA C A Urb-Dal, A Aus S A Mil-Tyr, [A Urb-Dal], A Pad-Fer, A Tre-Ver, F Ven-Fri, [A Per-Pav]nc).

AUTONOMOUS: Rom

Orders in brackets fail; b = besieged, d = destroyed, imp = impossible, nc = not controlled, nsu = no such unit, ntb = nothing to besiege, otb = off the board, otm = on the move, r-??? = must retreat to ???, u = unordered.

Venetian F LA must retreat otb or to ALB, AQU, BARI, RAG.

Due next time are retreats and orders for Summer 1528 and Press. Ma Nar craves Press. We now have a Miller #: 2002Gpw10.

EMBASSY BEAT

Florence: To quote my wife during one of our games at home, "Wait, don't attack me now - I'm trying to drink my coffee."

FRANCE-POPE MERRY XMAS...

Pope (in exile in Perugia) to the Infidel Turk: The Holy Church will never surrender. We will see Christianity's victories (in the form of Venice or France) before we will see your vile, corrupt and soulless hordes overrun God's kingdom. In the meanwhile, where's that coffee we ordered and those mathematicians and astronomers. You just can't get good help here. No one is willing to question authority.

T-1: I hope your fleets are aimed westward. Else we will be stalemated while others gain.

BORIS WORLD PRESS REVIEW

London Dispatch: The Government will gamble all on the words of it's two closest neighbors to counter the greater threat of a six center Russia. This could only mean that Russia is out to claim all in a quick conquest and we ask all of the other belligerents to stop the Russian expansion to the West.



They Are Set!

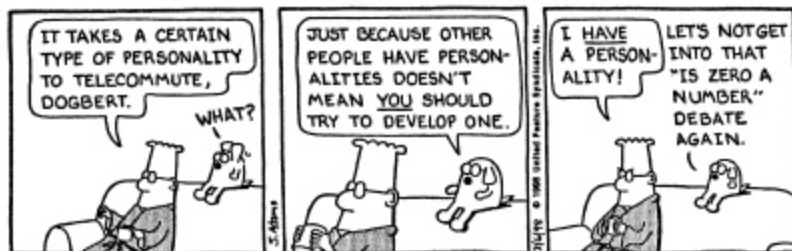
Lane	COLOR	DRIVER (CDM/DH)	CART	Whip	Wheels	TEAM	END	Speed	D/E
1	Aqua	Whiplash Willie (+1/6)	M	Y	10/10	5495	40	18	3/3
2	Green	Josephis (+2/9)	L	Y	10/10	7447	33	24	3/3
3	Purple	Leadfoot Laertes (+1/7)	M	Y	10/10	6335	52	18	3/3
4	Yellow	Davidus Detroiti (+2/6)	L	Y	10/10	4444	74	18	3/3
5	Orange	Maximus Gladious (0/7)	M	Y	10/10	7436	40	20	3/3
6	Blue	Sprinticus Rex (+2/8)	L	Y	10/10	7545	27	23	3/3
7	White	Minnesotus (+1/7)	M	Y	10/10	7536	36	21	3/3
8	Red	Rufus Magnus (+2/7)	H	Y	10/10	5324	30	16	3/3

Josephis (R Fisher), Rufus (O'Hara), Davidus (Dave A), Max (York), Sprinticus (Copeland), Minnesotus (Kanne), Leadfoot (tba), Whiplash (tba). The tbd chariots are open for late entries or will be controlled by random draw of orders supplied by the players.

Due next time are your initial bets, and your orders for Turn 1. Turn 1 orders must include whether you will whip (there will be a random at start 1d6 movement penalty as mandated by Rule 6.9, Special case), who you will attack (and how) if out of the safe zone, and how you would respond to an attack (brake, evasion, or take it). Defense orders may be conditional on whatever you deem relevant as long as it has already happened in the turn. And include orders for Leadfoot and Whiplash. In case you've forgotten, you (and any non-players that want to bet) have 10,000 sesterces (s) at your disposal. If you run a chariot, you must bet at least 100 s on your own chariot; if you bet on other chariots, you must bet more on your own chariot than you bet on all the others. Minimum bet is 100 s, in increments of 100 s. The initial bets placed will decide the odds on the race. You will have two other opportunities to place bets. at the end of 1st and 2nd laps. These later bets won't change the odds.

See map at: <http://hometown.aol.com/MsNar/maps/Cm5.gif>

See revised house rules at: <http://hometown.aol.com/prboulduc/boris/hrules/CircusMax.html>



ERRATA: An HC is in Kie, not a VC. A VC is in Mon.

THE CAST: (In Tiebreak Order)

London (McCabe): \$107, 13C, 2K, 150M, Gal-6

Paris (Frueh): \$345, 16C, 0K, 250M, Gal-4

Genoa (Copeland): \$70, 9C, 5K, 100M, Gal-6

Hamburg (Debbie A): \$105, 8C, 3K, 70M, Gal-4

Venice (Hanna): \$151, 11C, 3K, 125M, Gal-6

Barcelona (Buttitta): \$89, 9C, 3K, 100M, Gal-6

ADVANCES

A,E,F,I,N,O,R,X

A,E,F,I,N,R

A,E,F,N,R,V

A,B,I,R

E,F,I,N,R

A,F,I,N,R,V

Leaders are Majid (1st, P) and Gutenberg (B, \$3).

5.4: Purchase Phase

H (2t) buys Stabilization (\$6), Galley-6 (\$10), "Holy Indulgence" (F: \$60, +1 ML).

P (5t) pays \$3 to B for Gutenberg, buys "Institutional Research" (X: \$100, 10 MR), "Printed Word" (O: \$0 + 60 cr, 10 MR), "Laws of Matter" (C: \$60, 30 cr, 5 MR), "Wind/Watermill" (J: \$20, 20 cr, 5 MR), "Improved Agriculture" (K: \$30, 20 cr, 25 MR, -1 ML, "Seaworthy Vessels" (S: \$50, 30 cr, 5 MR), "Ocean Navigation" (T: \$60, 60 cr, 5 MR), "Urban Ascendancy" (V: \$20, 5 MR), -2 ML (70 MR).

L (9t) buys "Cathedral" (H: \$80, 40 cr, +1 ML, 25 MR), "Wind/Watermill" (J: \$20, 20 cr, 5 MR), "Urban Ascendancy" (V: 20 cr, 5 MR), and Stabilization (\$3). -1 ML (35 MR).

V (9t) pays B \$3 for Gutenberg, buys "The Heavens" (A: \$30, 5 MR), "Wind/Watermill" (J: \$30, 10 cr, 5 MR), "Printed Word" (O: \$10, 50 cr, 10 MR), "Nationalism" (W: \$60, 5 MR), Stabilization (\$3). -1 ML (35 MR).

B (12t) buys "Printed Word" (O: \$10, 50 cr, 10 MR), "Seaworthy Vessels" (S: \$60, 20 cr, 5 MR), and Stabilization (\$6).

G (17t) pays \$3 to B Gutenberg, buys Printed Word" (O: \$10 + 50 cr, 10 MR), and "Nationalism" (W: \$50, 10 cr, 5 MR). No stabilization so +1 ML.

5.5: Expansion Phase

H (2t) plays 2t(G,B:W 4,2:1 -1VT) @ Kaf.

P (5t) plays 5t(-c) @ Chi.

L (9t) plays 4t(-c, 5,6:6 -1GC) @ Tri, 5t(-c; 3,4:2 -1GT) @ Cal.

V (9t) plays 3t(-c, 6,6:1 -1GT) @ Nap, 5t(-c; 3,5:1 -PC) @ Mil, eat 1t.

B (12t) plays 2t(1,1:3 no) @ Jer, 8t(-c, 6,4:1) @ Tre, eat 2t.

G (17t) plays 7t(5,3:6 no) @ Lyo, 4t(3,3:4 no) @ Gra, 3t(4,4:5 no) @ Sic, 3t(-c, 2,6:4 -1PC) @ Bel.

L earns the expansion bonus card which ends the Second Epoch.

5.6: Interest & Profit Phase:

L,P (15C) earn \$105. V (12C) earns \$87. B,G (10C) earn \$75. H (8C) earns \$63. There are surpluses in Metal (5,6+2) and Wine (4,3+4), but no majority holders.

6.2: Card buy Phase: G buys a card (-\$10).

THE CAST: (In Turn 5 Order)

Hamburg (Debbie A): \$92, 8C, 4K, 70M, Gal-6

Paris (Frueh): \$107, 15C, 1K, 150M, ON-1

London (McCabe): \$109, 15C, 4K, 150M, Gal-6

Venice (Hanna): \$102, 12C, 4K, 100M, Gal-6

Barcelona (Buttitta): \$97, 10C, 4K, 100M, Gal-6

Genoa (Copeland): \$782, 10C, 7K, 125M, Gal-6

ADVANCES

A,B,F,I,R

A,C,E,F,I-K,N,O,R,T,V,X

A,E,F,H-J,N,O,R,V,X

A,E,F,I,J,N,O,R,W

A,F,I,N,R,V

A,E,F,N,O,R,V,W

--continued on p 17



BRITANNIA

"Egbert"
Turns XI & XII



The Cast:

Blue: Kevin Wilson Green: Dave Anderson Purple: Chuck Hanna Red: Peter Boyum

Board

R-Bs (0): 2A @ Mar.

Welsh (0): 1A @ Cornwall, Chwyd, Devon, Dyfed, Gwent, Gwynedd, Powys.

Brigantes (0.5): 1A @ Galloway.

Picts (0): 3A @ Alban.

Caledonians (1): 1A @ Hebrides.

Irish (2.5): 3A @ Hwicce; 1A @ Cheshire, Pennines.

Scots (2): 1A @ Dalraida, Skye.

Norsemen: 3A @ Caithness; 1A @ Cumbria, Moray, Orkneys.

Danes: 4R @ Frisian, North

Saxons (0.5): 2A @ Lothian, Strathclyde; 1A @ Avalon, Bernicia, Downlands, Essex, Kent, Lindsey,

Norfolk, S Mercia, Suffolk, Sussex, Wessex, York; Egbert @ ???

Score: Purple 63, Red 55.5, Green 39.5, Blue 31

TURN XI

Danes:

2A North-York (6.2.5 -1 Dane, -1 Saxon, 1 Dane, w-North), 1A North-York-N Mercia (w-North), 1A North-Frisian-Essex (3.3; 4.5 -Dane), 2A Frisian-Kent (5.5.4-Saxon, w-Frisian), 2 Danes Frisian-Channel-Sussex (5.4.3 -Saxon w-Frisian). Score 4 VP.

Saxons (0.5): Grow 10 pp. Add 1A @ S Mercia, Essex, & Lindsey and Egbert @ Lindsey. 1A Egbert Lindsey-York, 1A Essex-Kent, 1A S Mercia-N Mercia-York, 1A Bernicia-York, 2A Lothian-Bernicia-York, 1A Strathclyde-Bernicia-Lothian, 1A Strathclyde-Bernicia.

Score: Purple 63, Red 55.5, Green 43.5, Blue 31

TURN XII

The Saxons are King (+4 VP) and get an extra A @ York.

Score: Purple 63, Red 59.5, Green 43.5, Blue 31

R-Bs (0): Grow 0.5 pp. 2A Mar-Moray (6.4.1 -1 Norseman).

Welsh (0): Grow 4.5 pp. Add 1A @ Powys. Hold.

Brigantes (0.5): Grow 0.5 pp. 1A Galloway-Strathclyde.

Picts (0): Grow 0.5 pp. 1A @ Alban-Mar.

Caledonians (1): Grow 0.5 pp. Hold.

Irish (2.5): Grow 3.5 pp. Add 1A @ Cheshire. 1A @ Hwicce-March.

Scots (2): Grow 1 pp. Add 1A @ Dalraida. 1A Skye-Dalraida, 2A Dalraida-Strathclyde (6.3.4 -1 Brig. Brigantes extinct).

Norsemen (0): Grow 2 pp. 1A @ Atlantic-Galloway, 1A @ Atlantic-Dalraida, 1A @ Caithness-Icelandic-Dalraida, 1A @ Caithness-Skye, 2A @ Irish-Dalraida (6.5.2.1.3 -1 Scot). Score 6 tourist VP.

Dubliars: 2R Irish-Cumbria (4.1.3; 6.4.5 Norseman r-Galloway, w-Irish)

RED to All: We await the Danes. We strongly advise our Danish friends to remain at sea in peace and prosperity. Let's not have bloodshed at this time of year. Stay where you are and enjoy the sea breeze and the salt air.

Score: Red 65.5, Purple 63, Green 43.5, Blue 31

Board

R-Bs (0.5): 2A @ Moray.

Welsh (0): 2A @ Powys; 1A @ Cornwall, Chwyd, Devon, Dyfed, Gwent, Gwynedd.

Picts (0): 2A @ Alban; 1A @ Mar.

Caledonians (1.5): 1A @ Hebrides.

Irish (1): 2A @ Cheshire, Hwicce, March; 1A @ Pennines.

Scots (2): 2A @ Strathclyde.

Norsemen (2): 4A @ Dalraida; 2A @ Galloway; 1A @ Caithness, Orkneys, Skye.

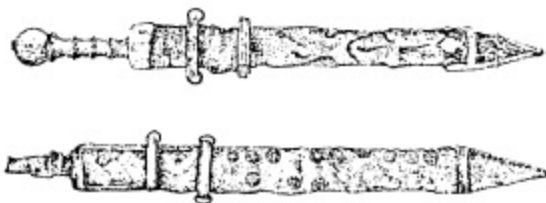
Dubliners: 2R @ Irish.

Danes: 6A, Bros, 2R @ North; 4R @ Frisia.

Saxons (0.5): 6A, Egbert @ York; 1A @ Avalon, Bernicia, Downlands, Essex, Kent, Lindsey, Lothian, Norfolk, S Mercia, Suffolk, Wessex.

Legend: A = infantry army, C = cavalry army, F = fort, L = leader, pp = population point, R = raider, r-??? = retreats to ???, w-??? = withdraws to ???, * = in melee, # = attack by/against cavalry

See map at: <http://hometown.aol.com/MaNar/maps/Egbert.gif>



Roman gladii A.D. 79



Source of the Nile

Turn 10



The Cast:

Dan Farrow (dropped)

Ron Fisher (dropped)

Don Chinnery

Jason Bargender

Andrew York

D&D Anderson

No Press.

Published: DD12 (lake, +79 acres), DD11 (lake, +75 acres), CC11 (lake, +88 acres), AA13 (veldt, river from 1 and 4 to 2), Z14 (veldt, river from 5 to 4, cataract, waterfall is 350 feet), Z13 (veldt, river from 1 to 2) and tribe L11 (the Mphahlele) in Z13.

Positions still available for fearless explorers.



LORD STANLEY

OR 5.1 & 5.2



Errata: GLSC was closed when the Port token was played. GW ran for \$180 upping Hanna's cash by \$24 and Butitta's & GW's cash by \$4. The extra cash means Hanna bought a pool LPS rather than a GT from IO (finishes with \$6 cash). GT is at it's loan limit and has only 195 in escrow. LPS is at E100, GT at F80, & CA at D75.

PLAYER STATUS: (* = Prez)

Frueh: \$22, NFSBC, 5 CA*, 1 LPS, 1GW
 Chinnery: \$2, 5 GT*, 4 CV* (Priority)
 Butitta: \$111, W&S, SCFTC, 5 WR*
 Zieske: \$72, 6 LPS*
 Hanna: \$6, 6 GW*, 2 LPS

CORPORATION STATUS:

Corp	Prez	Price	Par	IO	Pool	Loans	Escrow	Cash	Trains	Tokens
LPS	PZ	E100	90	0	1	5	---	591	33	C14, F17 Fios
WR	JB	A100	100	5	0	0	0	500	--	(O16)
GT	DC	F80	65	2	2	6	195	260	3	P9 CC
CA	MF	D75	80	4	1	2	80	80	4	D17, C14(Port),
CV	DC	D65	70	6	0	2	0	100	4	N11w
GW	CH	H55	65	2	0	6	195	93	33	F15, F17, D17

OR 5.1

Privates pay LPS \$5, GT \$10, JB \$20, and MF \$20.

Corp	Title	Lay	Token	Earn	Div	Loans	Trains	Price	Notes
LPS	#8/D13(sw)	--	--	\$200	\$20	(5)-50	33+4	E110	
WR	#5/O16(s)	O16	--	--	0	+4	A90		
GT	#8/L7(sw)	--	--	\$110	\$11	(6)-60	3	F90	
CA	#9/E14(sce)	--	--	\$160	\$16	(3)+70	4	D80	
CV	#59/L15(ne)	--	--	\$120	\$12	(2)-20	4	D70	a
GW	#6/B19(n)	--	--	\$190	\$19	(6)+40	33	H60	Destination

a) CV ordered #59/L15(s), which is impossible; GM adjusted lay to (ne).

OR 5.2

Privates pay LPS \$5, GT \$10, JB \$20, and MF \$20.

Corp	Title	Lay	Token	Earn	Div	Loans	Trains	Price	Notes
LPS	---	--	--	\$320	\$32	(6)+40	334	E120	
GT	#57/K8(ne)	--	--	\$110	No	(6)-60	3	F80	Destination
WR	#5/O18(ne)	--	--	\$70	\$7	(1)+90	4	A100	a
CA	#8/G14(sw)	--	--	\$160	\$16	(4)+60	4	D90	b
CV	#14/L13(s)	--	--	\$130	\$13	(2)-20	4	D75	
GW	#7/G16(nw)	--	--	\$200	\$20	(7)+30	33	G65	

a) Buys W&S from Butitta for \$80. Attempts to buy closed GLSC and place a port in O18.

b) Buys NFSBC from Frueh for \$200.

PLAYER STATUS: (* = Prez)

Frueh: \$517, 5 CA*, 1 LPS, 1GW
 Chinnery: \$236, 5 GT*, 4 CV* (Priority)
 Butitta: \$186, SCFTC, 5 WR*
 Zieske: \$384, 6 LPS*
 Hanna: \$344, 6 GW*, 2 LPS

CORPORATION STATUS:

Corp	Prez	Price	Par	IO	Pool	Loans	Escrow	Cash	Trains	Tokens
LPS	PZ	E120	90	0	1	5	---	253	334	C14, F17, F10s
WR	JB	A100	100	5	0	1	0	240	4	O16, W&S
CA	MF	D90	80	4	0	2	80	042	4	D17, C14(Port), NFSBC
GT	DC	F80	65	2	2	6	---	314	3	P9 CC
CV	DC	D75	70	6	0	2	0	100	4	N11w
GW	CH	G65	65	2	0	6	---	358	33	F15, F17, D17

The Bank has \$9,026.

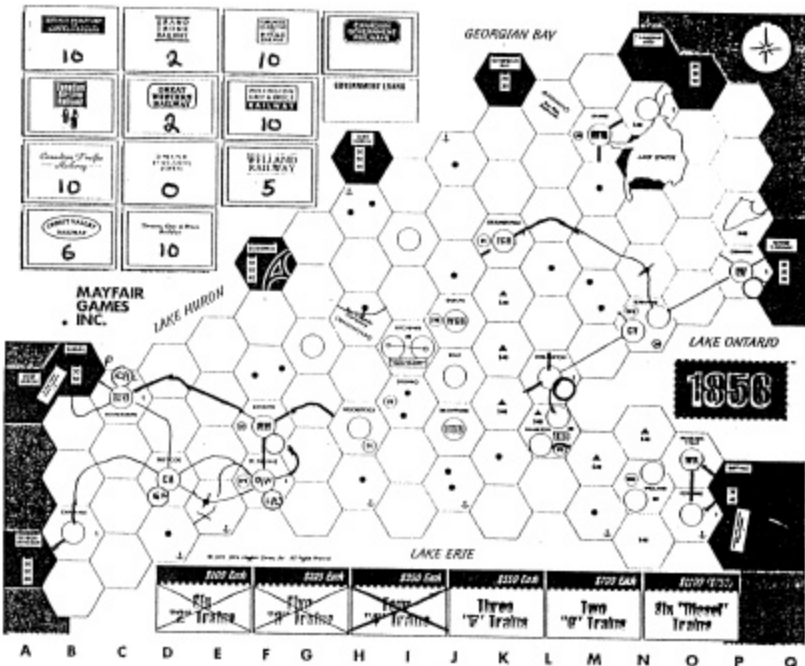
AVAILABLE TRAINS: 55566DDDDDD...

AVAILABLE TILES:

Yellow: #1(1), #2(1), #3(3), #4(3), #5(0), #6(1), #7(5), #8(7), #9(9), #55(1), #57(3), #58(1), #69(1)

Green: #14(1), #15(1), #16(1), #17(1), #18(1), #19(1), #20(1), #23(4), #24(4), #25(1), #26(1), #27(1), #28(1), #29(0), #59(1), #121(1)

Due next time: Orders for SR 6. Chinnery has the Priority.





1835

Back to OR 4



ERRATA: Here's the deal. In OR 3, Don's BY ordered track lays of #8/M13(se), #58/M15(nw), and #9/K15(nw) while Don closed the N-F in order to lay a token in L14N. After checking the rules, I ruled the K13 lay illegal since tokens are laid after tile plays and the token needed to be there before the tile in K13 could be laid (I loved the idea, though). Don protested, but never cited any reason to overturn the ruling other than "N-F closure is different", and thereafter wouldn't submit orders until I "corrected the tile placement". He seems to have forgotten the first rule of pbm play: "The GM is always right, unless you can convince him he isn't." Don didn't, nor did he propose any of several simple fixes.

I eventually consulted Tom Butcher, another 18xx GM, who concurred with Don that N-F closure is different. He then referred me to a non-working URL for verification, which of course raised my doubt hackles in my adjunct college professor role. Non-existent/imaginary references on a term-paper are a sure way to an "F". However, Tom's been GM'ing 18xx more intensely than I have, so I accept his ruling. And I have to admit, the 1835 rules are at best an insipid translation of probably indifferently written German rules. See House Rules for other translation disputes. Tom has promised to mail me some information, but it hasn't arrived yet.

OK, given that BY's OR 3 orders are valid, it follows that it's OR 4 orders, submitted in the same mailing, will be valid also, with increased income, so we publish those below. However, placement of the token in OR 3 severely affects SX's options when it comes online, so in fairness, I'm halting the turn there to let Chuck reassess SX's options.

Don has resigned from the game. Since he's won his case, I hope he'll reconsider. If not, I'll use VP (House Rules) orders for the BY until (if ever) I can find a replacement for Don's position or BY gets a new Direktor normally.

By the way, Tom needs 18xx players (I'm tired of getting sucked in to make a decent quorum). See subscriber list for how to contact him.

OR4 (revisited)

Corp	Tile Lay	Token	Earn	Dv	Trains	Price	Notes
BY:	#1/117(sw), #202/H20(sw)	H20	180	18M	22,2+,2+	D94	-160M
SX:		HH16)					

Player Status: (* = Director)

Fisher: 302 M, #1, #3, #6, 1BY, SX

Hanna: 81 M, L-D, 4 SX*, Braun

Buttitta: 56 M, #2, PB, 2 BY, SX <Zug>

Chinnery: 170 M, 4 BY*, Hann, OB

Zieske: 194 M, #4, #5, 3 BY

CORPORATION STATUS:

Corp	Dir	Price	IO	Pool	Cash	Trains	Tokens
#1	RF	--	--	--	60	2	H2
#2	JB	--	--	--	165	2	E19W
#3	RF	--	--	--	75	2	F14
#4	PZ	--	--	--	90	22	G5
#5	PZ	--	--	--	75	2	E19N
#6	RF	--	--	--	90	2	C11
BY	DC	D94	0	1	328	222+2+	O15, L14N, H20
SX	CH	D88	4	0	528		H16 (yet to operate)

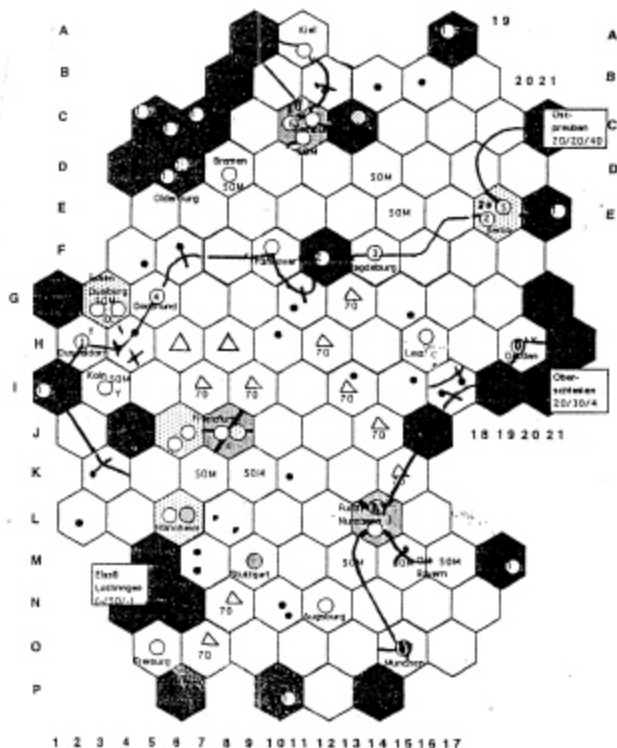
The Bank has 9,786 M.

Trains available: 2+2+3333,3+3+3+,444,4+,55,5+,66,6+6+6+

Titles available:

Yellow: #1(0), #2(1), #3(1), #4(3), #5(3), #6(1), #7(8), #8(12), #9(7), #55(1), #56(1), #57(0), #58(0), #69(1), #201(1), #202(0)

Due next: SX orders for OR 4 and orders for SR 5 and OR 5.1 (have most already). Butitta has der Zug.



3

180M



Beuth, 1844

Down with the King

Awaiting Wedding Orders!

Turn 6 (Still)



The Cast:

D&D Anderson: Knight Jeffrey (#23), 2 IP, 12/-2 PP, 12 cards, #51, #24(MC), #44.
A. Bargender: Knight James (#22), 6 IP, 17/6 PP, 10 cards, #52(H), #34, -#62, #12(H).
Copeland: Marquise Margaret (#56), 3 IP, 28/4 PP, 14 cards, Philip, #46, #54, #31, #53.
Fowble: Sir Robert (#16/62), 1 IP, 9/8 PP, 11 cards, #13(H), #21, #11.
York: Countess Mary (#54), 6 IP, 16/9?1? PP, 12/13? cards; #42(H), #63(H), #55?.

The Cabinet:

Monarch: King George (30 Support)
Navy: Lord Arthur (#36)
State: Earl Duncan (#34), Ja
Trade: Duke Marley (#44)
Epallin: Sir Donald (#21), Ro
Sandarkan: Sir Guy (#12), Ja
City States: Sir Richard (#14)

Consort: Queen Catherine
High Minister: Duke Henry (#43)
Army: Earl Francis (#33)
Justice: <Vacant>
Besyzan: Sir Michael (#15) Mg
Cronos: Sir Drew (#11), Ro
Treasury: Duke Roland (#42) H My

Turn 6.5:

Earl Duncan counseled the Monarch for Knight James regarding Treason and Conspiracy Trials to Make an Offer of Amnesty. It was accepted, but to no effect.

Wedding. Awaiting Knight James & Countess Mary's Intrigue Instructions, Knight Jeffrey proposes to Vikke (#51, automatically accepted, so the wedding will occur in Turn 7).

Marquise Margaret's discards INFORMER and EVIDENCE cards.

We still don't know:

1. Who, if anyone, is Sir James' MC.
2. Countess Mary's discard.
3. From whom Knight James and Countess Mary will intrigue a card.

The Cast:

D&D Anderson: Knight Jeffrey (#23*), 2 IP, 12/-2 PP, 12 cards, #51, #24(MC), #61*(engaged)
A. Bargender: Knight James (#22), 6 IP, 19/8 PP, 10 cards, #52(H), #34, (MC), #12(H).
Copeland: Marquise Margaret (#56), 3 IP, 28/4 PP, 12 cards, Philip, #46, #54, #31, #53.
Fowble: Sir Robert (#16/62), 3 IP, 19/15 PP, 12 cards, #13(H), #21, #11.
York: Countess Mary (#54), 6 IP, 16/1 PP, 12 cards; #42(H), #63(H), #55(H)???

The Cabinet:

Monarch: King George (30 Support)
Navy: Lord Arthur (#36)
State: Earl Duncan (#34), Ja
Trade: Duke Marley (#44), Je
Epallin: Sir Donald (#21), Ro
Sandarkan: Sir Guy (#12), Ja
City States: Sir Richard (#14)

Consort: Queen Catherine
High Minister: Duke Henry (#43)
Army: Earl Francis (#33)
Justice: <Vacant>
Besyzan: Sir Michael (#15)
Cronos: Sir Drew (#11), Ro
Treasury: Duke Roland (#42) H Ma

Turn 7:

1. Player order is: Robert, Margaret, Mary, Jeffrey, James.
2. Justice Ministry is vacant.
3. Political Problems: Treason & Conspiracy Trials, Monarch's support is 20 ± 10.
4. Crown Event: 4 = Famine.

7th Annual Chattanooga Rail Gaming Challenge

Country Suites, I-75 at exit 5 (Shallowford Rd.)

Chattanooga, TN

January 24-26, 2003

Entry Fee is only \$25 in advance, \$30 at the event



Come to the friendliest, longest running rail gaming convention in the southeast! This convention has been described as "Rail Gamer Heaven" and why not? We have three days of tournament gaming (four including informal Thursday gaming), more prizes than ever, one low entry fee with no separate event fees and a great venue with more convenience including a free airport shuttle. Call the hotel directly at 423/899-2300 and ask for the Chattanooga Rail Gaming Challenge discounted rate. Other lodging and restaurant options are nearby. Gamers of all skill levels are welcome. See who will claim the coveted (?) "It wasn't my fault award" for the first player bankruptcy! We will have a kick off event for the early birds on Thursday night where short German Style games will be featured and some kind of separate prize will be awarded. One-day admissions are available and once again, all admission charges are waived for players from outside the US! We expect strong players from Europe again in 2003! The 18xx Grand Prix returns for fans of the 18xx series and a separate tournament for all other rail games will be conducted. An open gaming area will be available all weekend. Meet some new friends and play some great games! For more details see my web page below or email me for the latest details, we'd love to have you!

Mark Derrick/M&M Promotions

3601 Glenaire Drive

Chattanooga, TN 37416-1546

Email to: derrick@chattanooga.net

Telephone: 423-344-0638 (before 10:00 p.m. EST, please)

For info on the convention, see <http://home.chattanooga.net/~derrick/gaming.htm>

Info on our host hotel can be found at <http://www.countryinns.com>



KREMLIN

No One Purged!



THE CAST (in Table Order):

Cary Nichols: Re-Education Deployment Society (REDS), 1 cards
 Ron Fisher: Red Bivalve Factory (RBF), 2 cards, 2 WAVEs
 Mike Scott: The California Connection (TCC), 2 cards
 Warren "Goz" Goese: Sneaky, Treacherous, Annoying Bastards (STAB), 2 cards
 Kevin Wilson: Red Army Ministry of Subversion (RAMS), 2 cards
 Dave Anderson: Dying Anarchists (DA), 2 cards

POLITBURO:

Party Chief:	Schrukrutov (B), C20	83	RBF 8, RAMS 6, DA 2
KGB Head:	Palavrian (G)	71	STAB 10, REDS 9
Foreign Minister:	Strychnin (T)	63?	RAMS 4, TCC 3, DA 1
Defense Minister:	Eatstumuch (M)	68s+	RBF 10, TCC 9, DA 3
Ideology Chief:	Satin (O)	62s	DA 7
Industry Minister:	Nogoodnik (V)	61+0	REDS 8, RBF 7
Economy Minister:	Niewitko (D)	73	REDS 7
Sport Minister:	Shootemdedsky (H)	70?	
Candidates: EFIKN			People: JLPQRSUWYZ
The Wall: A			Siberia: CX

3.2: PURGE PHASE: TCC plays Card 26 "German Teenager", 1st purge (+3) against the Defense Minister. Palavrian fails to purge Eatstumuch (11+3-2), aging 3 SP to 74.

3.3: SPY INVESTIGATION PHASE: Defense Minister Eatstumuch opens an investigation on Economy Minister Niewitko, aging 1 SP to 69.

3.4: HEALTH PHASE:

Party Chief Schrukrutov (B) smokes 6 packs of cigarettes a day, grows sick.
 KGB Head Palavrian (G) drinks 5 liters of vodka a week, grows sick.
 Foreign Minister Strychnin (T) jogs 11 km weekly, remains healthy.
 Defense Minister Eatstumuch drinks 10 glasses of orange juice daily, remains sick.
 Ideology Chief Satin (O) gives 5 hour speech, grows sick.
 Industry Minister Nogoodnik (V) stays in bed for 10 days, remains sick.
 Economy Minister Niewitko (D) swims 18 hours, remains healthy.
 Sport Minister Shootemdedsky (H) sits 6 hours in a duck blind, grows sick.

3.5: FUNERAL COMMISSION PHASE: n/a

Due next are orders for Replacement, Rehabilitation, and Parade Phases and, if you can, for the 1st Increase Influence Interphase (draw cards, increase influence on what politician, etc).

PRESS:

STAB to TCC: I know that I told you, RAMS & DA that I was going to attempt to purge the Party Chief now that I had control of the KGB. Did you just want to make it tougher on us, or had you consigned the game to RBF and wanted to play a card before it ended?

POLITBURO:

Party Chief:	Schrukrutov (B), C20	83+	RBF 8, RAMS 6, DA 2
KGB Head:	Palavrian (G)	74+	STAB 10, REDS 9
Foreign Minister:	Strychnin (T)	63?	RAMS 4, TCC 3, DA 1
Defense Minister:	Eatstumuch (M)	69s+	RBF 10, TCC 9, DA 3
Ideology Chief:	Satin (O)	62s+	DA 7

--continued on p 17

Cast: Mike Fisher (F) James Kanne (K) Rick Copeland (C) Debbie Anderson (A)

ERRATA: Robber is in b2, not in d2 as depicted on the map.

13.3 (C): (3) K collects 3 grain and A 2 grain in c4. C collects 2 brick in f2. Trade 1 lumber to F for grain, then trade 3 grain for 1 ore. Build road at g1/f2 (-bl).

13.4 (A): (9) F collects 2 brick. C & F collect 1 lumber. Can't build settlement (no lumber), GM buys a card (-gwo) _____ instead.

14.1 (F): (7) Moves Robber to b3 and steals grain from K. Build roads @ f3/f4 & f3/g3 (-bbl).

14.2 (K): (10) K collects 3 wool and F 1 wool from c3. F collects 3 wool from f4. Buy two cards (-ggwwo) _____ & _____.

14.3 (C): (2) No collection. Build road at f1/f2 (-bl).

Proposed trades: None.

Inventory/Summary (Robber at b2).

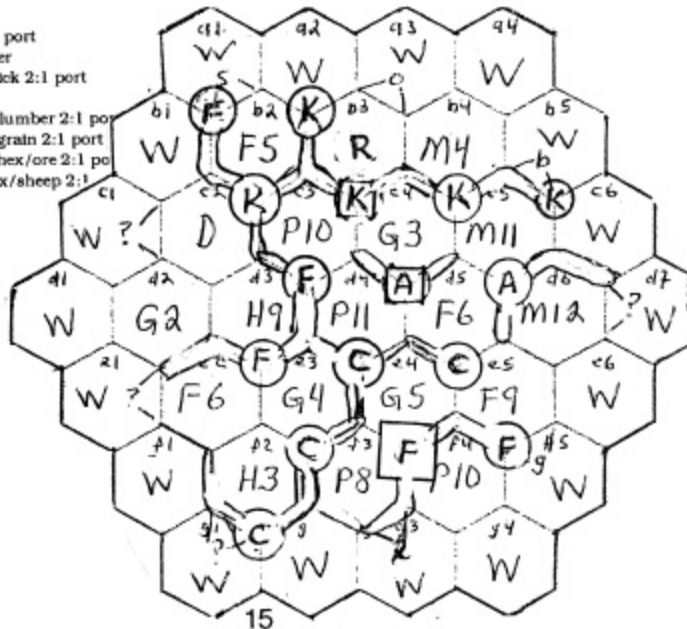
Player	Br	Gr	Lum	Ore	Wool	VP	Cards	Knights	Other
Fisher	0	1	0	0	4	6	1	0	
Kanne	2	0	0	0	1	6	0	1	
Copeland	0	1	0	1	2	6	1	0	Road(8)
Deb A	1	2	0	0	2	5	0	3	Army

Die Rolls Turn 14.4 to 15.4:

Deb A: 7 Fisher: 2 Kanne: 6 Copeland: 8 Deb A: 10

LEGEND:

- ? generic 3:1 port
- # dice number
- H/b hill hex/brick 2:1 port
- D desert hex
- F/l forest hex/lumber 2:1 port
- G/g grain hex/grain 2:1 port
- M/o mountain hex/ore 2:1 port
- P/s pasture hex/sheep 2:1 port
- R robber
- W water tile





ATRENS EPOCH V



The Cast

Dave Anderson: Orange
Mike Fisher: Purple

Laird Khaoz: Red
Wayne Morrison: Ebony

Kevin Wilson: Green
James Kanne: Azure

THE BOARD:

AI: Irr, LT(c); **AIII:** Tar; **AIV:** Che, Eln, Mek(2), Yan(C,AM).
EI: App, PSb, WAN(2); **EIV:** Dan.
GI: CAm(2,C), Cey, EGH; **GII:** Goll(c,f); **GIV:** Sum.
OI: PSD; **OII:** Hig(f,c); **OIII:** EAn(2), GPC(c,OM), Hok (C,f), Pin, StK, WGa, WGH; **OIV:** ED(c), Tur, WDe, WSt; **OV:** CMa, Lib, NGa(C,f), Sha(c).
PI: Yel(3,C,f); **PII:** Sib(2); **PIII:** Wei; **PIV:** Ara(C,PM), GaD(EM), GaV, Hin, Lev, Lin(GM), Mal(c,f), MT(c), Nil(RM), Pal, PP(RM), Uln(GM), UT(PM), Zag(c,AM); **PV:** Alb(RM), CEu, Ire, LRh, Pyr, Sea, Win.
RI: Con, Mad, Nub; **RII:** BSb(c); **RIV:** Bal(C), Cre, Dal, Mor(EM), Nap, SAp(OM).
Sens: At(P), Bla(E), BoB(G), EMS(R), Nth(P), Red(P), SCS(A), SoJ(O), WMS(2O)

SCORE: E(16+), R(22+), G(43+), A(47+), O(50), P(68)

EPOCH V:

HRE (V): Bid 13. Play "Kingdom" @ UNI (+1Al,f,c). Play 1A,C @ CEu (1PV r-LRh), "Surprise Attack" & 1A @ NGa (6,4:1 -C,f, -1OV +c +AM), CMa (4,4:4; 5,4:2 -1OIV), 2A @ Nap (4,2:5,4; 4,4:3,1 -1AV, 1RIV), SAp (5,4:2 -1RIV), 3A @ Alb (5,2:6,5; 2,1:5,1; 5,5:4,3 -2AV, -1PV), 1A @ LRh (4,3:1 -1RII). VP = 47 - 13 + C(2x2) + c(3) + M(2x2 + 3) + S(1) + Mid E(P=2) + N Afr(P=2) + China(D=6) + S Eur(P=3) + N Eur(D=4) + SE Asia(D=4) = 70.

AGI4: No show.

Sung Dynasty (E): Bid 10. 1A,C @ Sze, 3A @ Irr (3,2:6,3; 3,3:6,3; 6,5:4,2 -2EV, -1Al). Play "Treachery" & 1A @ Mal (-1PIV,c,f), F @ SCS (6,5:4 -1AF), 1A @ GaD (4,2:4,3; 5,2:5,3; 6,1:5,4 -1PIV), 1A @ Sum (6,2:6,3; 4,3:4,4; 5,2:4,1 -1GIV), EGH (2,1:3,1 -1EV). VP = 16 - 10 + C(1x2) + M(1x2) + S(2) + Mid E(P=2) + China(P=3) + India(P=3) + N Eur(P=2) + SE Asia(D=4) + N Amer(P=1) = 27.

Sefid Turks (R): Bid 15. Play "Empires Revive 4" @ 1RI @ Nub, 1RIV @ Mor & 2RIV @ Bal and "Empire Fortify 2" at Mor & Bal. Play 1A @ Tur (1OIV r-WSt), 3A @ PP1 (2,1:6,3; 4,1:6,2; 6,2:5,6 -2RV, -1PIV), 1A @ Hin (6,3:4 -1PIV), Uln (6,1:2 -1PIV), 2A @ Tar(6,2:6,5; 2,1:5,5; 5,3:1,1 -2RV, -1AIII), 1A @ Wei (4,1:3,2 -1PIII), 1A, RM @ Sze (6,4:1 -1EV,C +c), Yan (5,3:5; 2,2:1 -1AIV,C +c), 1a Che (4,3:1 -1AIV). VP = 22 - 15 + C(1x2) + c(2) + M(2x2 +3) + S(1) + Mid E(P=2) + N Afr(P=2) + China(D=6) + India(P=3) + S Eur (D=6) + Eurasia(P=1) = 39.

Orange to Green - Kill Azure, Kill the Purple people eater.

Mongols (G): Bid 26. Play 1A @ Mon. ...

SCORE: E(27), R(39), G(43-26+), O(50), P(68), A(70)

Due now: Orders for Mongols.

THE BOARD:

AI: LT(c), Uln(c,f); **AIV:** Eln, Mek(2); **AV:** Alb(RM), BSb; CEu(C,AM), CMa, Nap, NGa(c), SAp(OM).

EI: App, PSb, WAn(2); **EIV:** Dan; **EV:** GaD(EM), Irr, Mal, Sum.
GI: CAM(2,C), Cey, EGh; **GII:** Golt(c,f).
OI: PSD; **OII:** Hglf(c); **OIII:** EAn(2), GPC(c,OM), Hok (C,f), Pin, StK, WGa, WGh; **OIV:** EDe(c), WDe, WSt(2); **OV:** Lib, Shalc).
PI: Yel(3,C,f); **PII:** Sib(2); **PIV:** Ara(C,PM), GaV, Lev, Lin(GM), MT(c), Nil(RM), Pal, UTi(PM), Zag(c,AM); **PV:** Ire, LRh(2), Pyr, Sca, Win.
RI: Con, Mad, Nub(2); **RIV:** Bal(3,C,f), Cre, Dal, Mor(2,f,EM); **RV:** Che, Hin, PPI(RM), Sze(c,RM), Tar, Tur, Uln(GM), Wei, Yan(c,AM).
Seas: At(P), Blaf(E), BoB(G), EMS(R), Nth(P), Red(P), SCS(E), SoJ(O), WMS(2O)

Map posted at: <http://hometown.aol.com/msnar/maps/Atreus.gif>

--"Cyning" (continued from p 5)

PRESS

Genoa to Paris----Nicely done, Mark. Very nicely done! If I were not the suicidal maniac that I am, I would surrender to you now. Unfortunately, I must fight to the bitter end.

Genoa to all---Paris will be spending \$345 this turn in case you hadn't noticed. According to my meager records, Mark has played 6 of the 12 commodity cards which have been played so far in this game. Perhaps we can all learn a lesson from this. Also, if anyone has any idea how we can stop Paris from winning, please contact me.

THE BOARD:

B: C @ Alex, Alg, BAR, Basq, Fez, Gra, Lis, Tol, Tre, Val; IT @ Barc, Tou.
G: C @ Bel, Con, Cyp, Flo, GEN, Mar, Smy, Sue, Tun; IT @ Ada.
H: C @ Col, Dan, HAM, Kie, Lub, Nov, Pra, Rig; IT @ Ama, Bre, Cop, Kaf, Mal, Mit, Smo, Ste, Whi.
L: C @ Ber, Cal, Che, Edi, Ice, LON, Por, Sev, Sic, StM, Sto, Tri, WAF, Wat, Yor; IT @ Arm, Corn, Kon, She, Wal.
P: C @ Acr, Alep, Basl, Bor, Bru, Bud, Chi, Cre, Dij, Dub, Lyo, Nur, PAR, Str, Vie; IT @ Ath, Dur, Gal, Jer, Lev, Tar.
V: C @ Ang, Erz, Mil, Mon, Nap, Potl, Rom, Saio, Sar, Tan, Var, VEN; IT @ Salz, StG.

Due next time are orders for Turns 5.7 (Token Bid), 6.3 (Card Play).

Your cards (Karte) are:

LEGEND: c = white circle, C = colored circle, K = cards, M = misery, ML = misery level, t = white token, T = colored token

See <http://hometown.aol.com/msnar/maps/Cyning.gif> for map

--KREMLIN (continued from p 14)

Industry Minister:	Nogoodnik (V)	61+0	REDS 8, RBF 7
Economy Minister:	Newitko (D)	73?	REDS 7
Sport Minister:	Shootemdedsky (H)	70?+	
Candidates:	EFIKN	People:	JLPGRSUWYZ
The Wall:	A	Siberta:	CX

LEGEND: s = strong, w = weak, + = sick, ++ = ill, ? = under investigation, C# = card # remains as a bribe, 0 = Taking the Cure.

ON DECK



1830: Chinnery, R Fisher, Zieske, Copeland, Zodda, Hanna

1835: Hanna

1856: Hanna

1870: Zieske

AGE OF RENAISSANCE: Hanna

AIR BARON: R Fisher, Copeland, Zodda

BRITANNIA: Dave A, Hanna, Butitta, Wilson, Boyum (awaiting end of Devon or Egbert)

CIRCUS IMPERIUM: O'Hara

COLONIAL DIPLOMACY: O'Hara

DIPLOMACY: Fisher, Shacklett, Zodda

DUNE: Dave A, R Fisher, K Wilson, Butitta, O'Hara; need 1-4 more

GLADIATOR: O'Hara

GUNSLINGER: Scott, Fowble, R Fisher, O'Hara; need 3 more

HISTORY OF THE WORLD: Zodda

JUNTA: Copeland, Dave A, Hanna

KINGMAKER: R Fisher, Shacklett, O'Hara

KREMLIN: Zodda, Scott

MAGIC REALM: Butitta, Deb A, Chinnery, O'Hara

MAHARAJA: Hanna

MERCHANT OF VENUS: R Fisher, Deb A, Chinnery

MONSTERS RAVAGE AMERICA: Butitta, TJ Klausutis(?)

RUSSIAN CIVIL WAR: O'Hara, Scott

SETTLERS of CATAN: Chinnery, Goz, K Wilson, Copeland

SILVERTON: Zieske, Deb A

TITAN: Khaos, A & J Bargender, York, (Webb), O'Hara; need 1 or 2 more

WIZARD'S QUEST: A&J Bargender, Farrow, R Fisher, Deb A, O'Hara

OTHER POSSIBILITIES: 1829 (N OR S), AFTER THE HOLOCAUST (*GM Fowble), GODSFIRE, KAMAKURA, PLANET MINERS, SAMARAI

* Offered by guest GM, when space is available.

OUR SUBSCRIBERS

Dave & Debbie Anderson, 20832 Tuck Rd, Site 32, Farmington Hills, MI 48336; (248) 473-7482;

Dave: andersond4@michigan.gov; Deb: andersond5@juno.com

Alan Bargender, 6 Gregg Dr, Selingsgrove, PA 17870; (570) 379-9951; alanmb@peoplepc.com

John Boardman, 234 East 19th St, Brooklyn, NY 11226-5302

Peter Boyum, 720 Sunrise Ave #36, Roseville, CA 95661; pboyum@sawest.net

Tom Butcher, 674 Roanoke Ave, Cuyahoga Falls, OH 44221; chikakob@msn.com

John Butitta, 339 Ninth, Neenah, WI 54956; (414) 725-7218; docjob@tds.net

Don Chinnery, 1232 Fordham Drive, Sun City Center FL 33573; (813) 634-9119; wu9t@aol.com

Forest Cole, 11210 Montverde Ln, Houston, TX 77099; (281) 564-4688; simply4est@yahoo.com

Rick Copeland, 1531 Pack Horse Rd, Winchester, VA 22603; (540) 888-4420;

cope655321@aol.com

Fred Davis, 3210 Wheaton Way, Ellicott City, MD 21043-4254.

Michael Fisher, 43 W Mannheim St Apt 2, Philadelphia, PA 19144-2942; (215) 438-9966;

mikefisher65@yahoo.com.

Ron Fisher, 210 Normandy Dr, Wilmington, NC 28412; (910) 395-8330; skylark3@charter.net

Wade L. Fowble, 1127 Longbrook Rd, Lutherville, MD 21093-6307; (410) 828-8753;

wfobe@aol.com

Mark Frueh, 1128 Olympus Dr, Naperville, IL 60540; (630) 357-7780; mark_frueh@msn.com

Warren Goesle, 623 Scenic Circle, Holland, OH 43528; wgoesle@core.com

Chuck Hanna, 379 Wilett Ct, Severna Park, MD 21146-1912; (410) 544-3077; ochanna@tand.net

Chris Hassler, 2000 S Armour Ct, La Habra, CA 90631; chassler@adelphia.net

James Kanne, RR1 Box 77, Franklin, MN 55333; jkanne@means.net

TJ Klausutis, 115 Dana Pointe Lane, Niceville, FL 32578; (850) 678-6239; tklausutis@aol.com

Laird Khaoz, 4733 S. Huron River Dr, Flat Rock, MI 48134; kblodcrow@yahoo.com
 Andy Lischett, 2402 Ridgeland Ave, Berwyn, IL 60402
 Philip McCabe, 615 Smith St, Plymouth, WI 53073; (920) 892-7554; pmccabe@excel.net
 Lee McConnell, 2023 Stancrest Rd, Dublin, OH 43016-9546; blackhawk@netwalk.com
 Wayne Morrison, LTSI-ALSALAM (KM) Box 762, 1119 Wilco Drive, Baltimore, MD 21223-3230;
 thomascet_ksa@yahoo.com
 Cary Nichols, 756532-938 S FM 1673, Snyder, TX 79549-8812.
 Walt O'Hara, 10730 Burr Oak Way, Burke, VA 22015; hotapur@hackermail.com
 Paul Saunders, 124 Hopeland Lane, Sterling, VA 22614; (703) 406-0773;
 paul.saunders@verizon.net
 Mike Scott, 16603 Colonial Dr, Fontana, CA 92336; (909) 357-6030; mikesmag2@juno.com
 Jack & Rose Shacklett, 365 Hobbs-Reesor Rd, Vine Grove, KY 40174; (502) 828-4281;
 jlhack@bbtel.com
 Sven Vasseur, Fredriksbergsvägen 12, SE-185 35 Vaxholm, Sweden +46 8 541 302 16;
 sven.vasseur@swipnet.se
 Kerry Watson, 2138 Clovernook Lane, Neenah, WI 54956; (920) 733-9576; kwatson1@new.rr.com
 Kevin Wilson, 373 Gateford Dr, Ballwin, MO 63021; (636) 391-9865; ekevinw@aol.com
 Bill Wordelmann, 541 Canyon Trail, Carol Stream, IL 60188-1364; (630) 665-8304;
 vulch@tx.netcom.com
 Andrew York, PO Box 201117, Austin, TX 78720-1117; wandrew@compuserve.com
 Paul Zieske, 3501 Keenan Lane, Glenview, IL 60025; (847) 498-9237; zieskep@juno.com
 Rudy Zodda, 7 Hansen Ave, New City, NY 10956; (845) 708-9056; rzodda@aol.com

 DEADLINE FOR MOST GAMES IS 1800 CENTRAL TIME 10 JAN 03

The Bottom Line

This is **BORIS THE SPIDER**, a 'zine dedicated to the play of multiplayer games. **BORIS** is usually published following the first Friday of the month by Paul & Meg Bolduc, 203 Devon Ct, Ft Walton Beach, FL 32547-3110 and currently has a subscription price of \$10.50 for 12 issues in hardcopy (\$13.25 in Canada, and \$16 overseas) or a token \$1 by e-mail. A hardcopy sub will also include an e-mail sub. Make checks payable to "Paul Bolduc". **BORIS** can be reached at (850) 863-9081, or prbolduc@aol.com. If phoning, expect to be greeted by an answering machine. If we're here, not engaged in an epic computer battle or enthralled in baseball, hockey, or college football, and recognize your voice, you may get to talk to a real human, so don't hang up upon hearing our recorded message (it changes every power outage).



STELLAR CONQUEST

William T. Riker: Due are Turn 34 combat and movement orders for Turn 35-36. Please expedite your orders.

"Kurzon Dax". We have four applicants, others apply soonest.

BORIS THE SPIDER

**c/o 283 Devon Ct
FLWB, FL 32547-5118**

TABLE OF CONTENTS

Addresses	pp 18-19
AGE OF RENAISSANCE	pp 5,17
BRITANNIA	pp 6-7
CIRCUS MAXIMUS	p 4
DIPLOMACY	
"Boris XVI"	pp 2,3
MACHIAVELLI	p 3
DOWN WITH THE KING	p 12
1835	pp 10-11
1896	pp 8-9
HISTORY OF THE WORLD	pp 16-17
Hobby Service Message	p 13
KREMLIN	pp 14,17
On Deck	p 18
SETTLERS OF CATAN	p 15
SOURCE OF THE NILE	p 7
STELLAR CONQUEST	p 19

FIRST CLASS MAIL