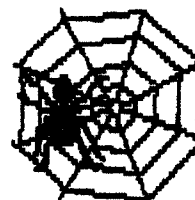


TABLE OF CONTENTS	
Addresses	pp 18-19
AGE OF RENAISSANCE	p 14
AIR BARON	p 15
BRITANNIA	
"Devon"	p 6
"Prison"	p 7
DIPLOMACY	p 2
"Boris XVI"	p 3
MACHIAVELLI	p 12
DOWN WITH THE KING	p 8
DUNE	pp 10-11
1830	p 17
JUNTA	p 16
KREMLIN	p 18
On Deck	pp 5&13
SETTLERS OF CATAN	p 4
SOURCE OF THE NILE	p 19
STELAR CONQUEST	p 9
TITAN	

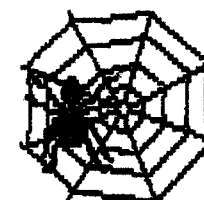
**BORIS THE SPIDER**  
 c/o 203 Devon Ct  
 FWB, FL 32547-3110  
<http://hometown.aol.com/prbolduc/boris/borishome.htm>



VOLUME VIII, #8

## BORIS THE SPIDER

A Journal of Duplicitous Doings,  
 Raw Power, and Naked Greed  
 "Oh, what a tangled web we weave  
 When first we practice to deceive!"  
 --Sir Walter Scott--



20 Aug 04

(#228)

### No Real Wood from WBC!

Oh, the ignominy of it all! Read about it on p 4.

While sticking mailing labels on July's issue, it struck me that we had only 18 paid subscribers for the hard copy of BORIS and all but one of those get the e-copy. This focused attention on a couple of lines of thought, to wit:

1. Our subscriber base has been shrinking for a couple of years now, and that probably also accounts for the difficulty we've had filling games of late.
2. At what point does putting a hard copy out at all cease to make sense?

I spread around a couple of handfulls of back issues at WBC, but this year have yet to get a response. Perhaps y'all can convince some of your ffl gaming buddies to subscribe and play in some games.

On a related topic, the cost of duplicating the 'zine has gone up 10% which means we'll either need to raise the sub fee to \$1.00/issue (from the present \$0.875/issue) or drop to 16 pages from the present 20. The latter could easily be done by pulling the e-mail games out of the 'zine.

Looks like we have space and quora for JUNTA and for Gunboat MACH. If one or both don't start, let t's try 1870 (need a minimum of 4).

#### IMMEDIATE GAME OPENINGS:

DUNE: BG is available.

Gunboat MACH: Probably starting! See p 3 for details.

1870: Have Zieske, Hanna, Fruch need 1 to 3 more.

JUNTA: Have 4, starts next time. Have room for three or more. See p 17 for details.

#### BORIS'S BULLETIN BOARD

THOUGHT FOR THE MONTH: "If it's not illegal, immoral, or fattening ... go for it!" --- Harold R. McAlindon

WBC will be moving from Hunt Valley, MD to Lancaster, PA next year. The mini-cons remain where they were. Make plans now. See Reference 1.

Chuck Hanna has a new e-address.

We have some details on PsychoCon on p 13.

#### BOOS & KUDOS

The Madame Bolduc Press Excellence Award (and free issue) this month goes to Lee McConnell for his MACHIAVELLI press.

This month's Ms Nar Super-Sudsy Bomb is lobbed at Rudy Zodda for very late DIP orders..

#### REFERENCES:

1. <http://www.boardgamers.org/>

PERSONAL COMMUNICATION HERE (maybe):

Deadline for most games is 1800 CDT 10 Sep 04



## A FIRE IN THE EAST

Fall 1984

XVII  
2003F

**MINAS MORGUL:** It's all but over for Russia and Turkey and it's not looking too good for Britain. The question now is "Who is next for the dustbin of History?". Both Germany and Italy border on the three surviving Powers, but Italy is the weaker of the two so is the favorite of the bookies in London and New York.

### TROOP MOVEMENTS

Austrian A BUL retreats to GRE. English F Mid retreats to WES. French F ENG retreats to BRE.

**AUS:** (Rick Copeland) A Gal S A Rum, A Gre-Bul, F Aeg S ITA F Smy-Con, A Ser S A Gre-Bul, A War-Mos, [A Ukr-Sev], A Rum S A Gre-Bul;  
**ENG:** (Jack Shacklett) F Wes-Tun, [F Eng-Wal(r-???), F Lon S F Eng-Wal, F Edi H;  
**FRA:** (Kevin Wilson) A Bur S A Bel, A Lpl S F Wal, F Wal S F Bre-Eng, F Bre-Eng, A Bel H, F Spa(ac) H, F Mid S F Bre-Eng;  
**GER:** (Rudy Zodda) A Fin-StP, A Hol H, F Bot-Bal, A Mun H, A Swe-Nwy, F Den-Nth;  
**ITA:** (Ron Fisher) A Syr-Smy, A Tus-Rom, F Eas S A Syr-Smy, F Smy-Con;  
**RUS:** (Dave Anderson) [A Arm-Sev], [A Bul S TUR A Con(kotm,d), F Bla S A Bul;  
**TUR:** (Cary Nichols) [A Con-Bul(d), [A Ank-Arm].

Orders in brackets fail; d= destroyed, otb = off the board, nso = not so ordered, r-??? = must retreat somewhere. Full transcript of game and the latest Map are on the Website.

English F ENG must retreat otb, or to IRI or PIC.

### SUPPLY CENTERS:

AUS: Bud Tri Vie Gre Ser Bul War +Mos +Rum	(9) Build 2
ENG: Edi Lon -Nwy -StP +Tun	(3) Tear 1*
FRA: Bre Mar Par Bel Por Spa Lpl	(7) Even
GER: Ber Kle Mun Den Hol Swe +Nwy +StP	(8) Even
ITA: Nap Rom Ven -Tun +Con +Smy	(5) Even
RUS: -Mos Sev -Rum	(1) Tear 1
TUR: Ank -Con -Smy	(1) Even

\*Even if F ENG r-otb.

Orders for the retreat, builds/tears and for Spring 1905 are due next time.

### EMBASSY BEAT

**LONDON:** The admiralty announced today that it cancel most of its tours outside of local waters due to a rash of French tourists. However, a Mediterranean has been offered at the last moment with proposed ports of call into Spain, Marseilles, and Tunis. Some ports in Italy may also be available.

T-R/I: Maybe in winning the battle for Turkey, you lost the war.

### BORIS WORLD PRESS REVIEW

**Vienna Zeitung:** (transcript of a letter sent by General Zuruckgang to the Austrian Emperor.)  
Sire,

We advanced to Warsaw as you ordered. The treasure you have entrusted us to deliver to the Czar's armies is still in our possession. Upon reaching Warsaw we found no Army, only a town in a miserable state of ruin. The soldiers did their Christian duty and handed out all the rations we carried. The countryside is in a sorry state as well, with no order but what we establish. The soldiers are behaving very well, and thusly bring honor upon all Austrians..

We will now advance upon Moscow with the hope of reaching some authority or power to whom we can entrust your gift. We understand that your gift was for the czar to use to equip new armies to fight the heathen Turk, but it is our considered opinion that we should distribute the treasure to the needy in Russia. Please advise your humble servant as to how I should proceed upon reaching Moscow.

Yours to command,  
Zuruckgang, General VII Army.



MACHIAVELLI  
France Bribes!  
Summer 1517

2003 D  
pw10

**Ragnocitti:** France's deep pockets have put two more cities essentially under his heel. This puts *La Belle France* perilously close to victory. One question is whether Venice will survive to the end. The more important one is if Turkey, the Papacy and Austria can coordinate enough of a counterattack to thwart a French victory before Spring.

### TROOP MOVEMENTS:

Venetian A FER retreats into garrison.

**AUSTRIA** (Wilson, 1d): F WM-GoL, [F Dur-Alb], F TS S F WM-GoL, F Sal S F Nap, F CM-IS, F Cor S F TS, F Nap H, F Sar S F WM-GoL, [A Bari-Aqu];

**FRANCE** (Scott, 14d): Two bribes of (G) 6d vs SIE & PIO. [A Mod-Par], F Sie S F LS-Pio, [A Cre-Par], A Ber S A Mil, [A Tyr S A Mil(r-???), F LS-Pio, F Gen-LS, [A Mil S A Tyr], [A Mar-Pro], A Sav-Mon, [F Pro-GoL].

**PAPACY** (Anderson, 16d): F Pisa H, A Man-Bol, [A Aqu S A Cap-Nap], A Fer B1, F Ven H, G Man = A, [A Cap-Nap];

**TURKEY** (McConnell, 4d): A Carin S A Aus-Tyr, A Fri S A Tre B2, F Dal-LA, A Tre B2, F UA S F Dal-LA, [A Trent -Mil], [A Her-Alb], [A Ver-Pad], A Aus-Tyr;

**VENICE** (Nichols, 4d): [G Fer = A], [A Pad S G Fer = A], [G Tre = A](d).

**Autonomous:** Luc, Mon, Pio(d), Sied(d).

Orders in brackets fail. b = besieged, d = destroyed, imp = impossible, no = not owned, nso = not so ordered, nsu = no such unit, otb = off the board, otm = on the move, r-??? = must retreat otb or elsewhere.

French A TYR must retreat otb, into garrison, or to COMO, SWI, TUR.

Orders for Fall 1517 are due next time. And Press. Ms Nar craves Press. Game transcript and map are on the website.

### EMBASSY BEAT

TURK-FRANCE: THE POPE MADE ME DO IT.

France to all, again.... heard from only one of you, is that all the friends a guy like me has? Here I am, supporting your boarders, not making any trouble, and I don't hear much from you. Doesn't seem right somehow.



Gunboat MACHIAVELLI

Shall We Start?



Methinks we have four signed up, which is our minimum quorum. More are welcome so if you want to play, answer up -- the default scenario will take up to eight. If you want in, state your druthers concerning:

1. Scenario (default is Scenario 1, "Struggle For Dominance, Pt 1")
2. Country (default is random selection)
3. Rules to be used (default is all rules except "12. Excommunication")
4. Press or no Press (default is Press allowed)



## Source of the Nile

Turn 26



### The Cast:

Dan Farrow (dropped)  
Andrew York

Jason Bargender  
Don Chinnery

Ron Fisher (dropped?)  
D&D Anderson

**Published:** DD12 (lake, +79 acres), DD11 (lake, +75 acres), CC11 (lake, +88 acres), AA13 (veldt, river from 1 and 4 to 2), Z14 (veldt, river from 5 to 4, cataract, waterfall is 350 feet), Z13 (veldt, river from 1 to 2) and tribe L11 (the Mphahlele) in Z13. G24 (jungle, river from 3 to 6), H24 (swamp), G22 (mountain, river begins and extends to 4), H21 (desert, river from 1 to 3, oasis), I22 (veldt, river from 6 to 3), J19 (swamp), J18 (veldt), K18 (veldt), M10 (the Kimbundu) in G22, L15 (the Bagaza) in J19, M36 (the Ruanda) in J18, M37 (the Maleonde) in I22. P2 (swamp), O4 (lake, +21 acres), N4 (lake, +33 acres), M1 (the Ankrin) in P2, FF8 (mountain, river from 6 to 5, cataract), FF7 (jungle/swamp), EE8 (jungle/swamp), EE9 (mountain, river from 3 to 1, 65 foot waterfall), DD8 (jungle/swamp), GG5 (veldt, river to 1), FF5 (veldt, river from 4 to 1), EE6 (desert, river from 4 to 1), DD6 (veldt, river from 4 to 2, 85 ft waterfall), DD7 (jungle/swamp), M24 (the Gadami) in FF7, and S2 (the Ngubane) in GG5.

Positions still available for fearless explorers. Contact Alan Bargender if interested.

### PRESS:

Dear Horis,

Our 2nd journey is definitely more difficult than traversing the Nile!! Haven't had had this many problems since we tried to help those chaps Lewis and Clark. Although that young Indian lass they had was quite a looker.

We did not bring our boating equipment. Lakes seem to spread for miles.

I'm not sure Englantine can float across. Write soon, Emelious.

### WBC REPORT

Yes, despite five games of GANGSTERS, two games of CIRCUS MAXIMUS, PRINCESS RYAN'S, STAR MARINES, SAN JUAN, and UNION PACIFIC, and one game of ATTIKA, BRAWLING BATTLESHIPS, ENEMY IN SIGHT, MONSTERS RAVAGE AMERICA, SLAPSHOT, SQUAD LEADER, VANISHED PLANET, and WIZARD'S QUEST (and the Orcslayer variant), the best I did was make the semifinals in GANGSTERS (twice -- don't ask) and UNION PACIFIC and won the WIZARD'S QUEST consolation round (OK, that was wood, but I made it). I did swindle a win in SQUAD LEADER when I had a single broken Russian squad in an upstairs hex of the objective building, thus denying the Germans total control and the game. Also had a joint win in VANISHED PLANET - a very cooperative game. Picked up SAN JUAN (*vide infra*), the PUERTO RICO expansion kit, and THEOPHRASTUS (an alchemical card game, although it could just as easily be about stealing corporate secrets).

The Con started out with its first ever game auction. I came in a bit late and never even registered to bid, but while I watched I saw two copies of TITAN go for \$110 each. What I saw was too rich for me. On the other hand, I've got many unpunched, unplayed or hardly played games that, if I would sell, could clear needed space for more recent additions.

As you may recall, my usual roomie for WBC, Paul Saunders of Sterling, VA, moved to Carriere, MS right about the time I made the HVI room reservation. There was some chance he could still make it, but about 6 Jul, he knew he couldn't, which was too late to revoke the room reservation without a day's penalty (122.04 after taxes). So I was bereft of a staging point and someone to share the room. Tom Dworsdzk and Ian Woll answered my ad on the BPA website and saved me from the Nar's financial scorn (You spent \$600 for a room for this ...!!!!!!). Joe Gunderson also was in, but he found someone else on the first day of the Con.

### OBSERVATIONS:

1. WBC is becoming more a family forum; there appeared to be more women (and presumably children though that's hard to tell) than before. The hardcore wargamers are still protected by sequestering them to increasingly smaller and more soundproof rooms. On the other hand, with the move to Lancaster, PA, who knows where the games will be distributed.

2. Rolinda Collinson, the GM of HISTORY OF THE WORLD, told me that the Hasbro version will now be the only version used at WBC. Bummer. I now have both, but am better versed at Pt 1.

3. If you like PUERTO RICO, you'll love SAN JUAN (PR as a card game --one minute set up, and half the playing time), 2-4 players.

4. If you like NAVAL WAR/ENEMY IN SIGHT you'll also like BRAWLING BATTLESHIPS (Ref 2).

## SoC

## Development!

Turns 3.5- 4.2

## Ernst

The Cast: R Fisher (F) P Zieske (Z) M Scott (S) K Wilson (W) R Copeland (C)

**CHANGE:** The map has been updated although I may not have been able to correct h4 from H11 to M11.

### Turns 3.5-4.2:

**3.5 (C):** Roll 3. S collects 1 brick from d6 and 1 wool from e5; C collects 1 grain from g2. No action.

**4.1 (F):** Roll 6. F, S & C collect 1 lumber from e4; Z collects 1 wool from g3; W collects two lumber from c5. Plays Knight to move robber to e6, steals 1 brick from S. Buys a card \_\_\_\_\_ (-gow).

**4.2 (Z):** Roll 7. Move robber to e4. Steal lumber from F. Trade 4 grain for 1 brick. Build road g2/h2.

**4.3 (S):** Roll \_.

### COMMODITY STATUS

Player	brick	grain	lumber	ore	wool	Knights	cards	VP	Other
F	1	0	0	0	0	1	1	3	
Z	0	3	1	1	2	0	0	2	
S	1	1	0	0	2	0	0	2	
W	0	0	1	0	0	0	0	4	
C	0	2	2	0	0	0	0	2	

### Development: (Robber @ e4)

**F:** Settlements: e3/e4/f3, b3/c3/c4, a2/b2/b3

Roads: b3/c3, e3/e4, b2/b3, e3/f3

**Z:** Settlements: d2/d3/e3, g3/h2/h3

Roads: d2/d3, g3/h2, c2/d3?

**S:** Settlements: d6/e6/e7, e4/e5/f4

Roads: e6/e7, e5/f4, e5/f5, f4/f5

**W:** Cities: b4/c4/c5, f5/f6/g5

Roads: c4/c5, f5/f6, e6/f5, e5/e6

**C:** Settlements: d3/d4/e4, f3/g2/g3

Roads: d3/d4, g2/g3, g2/h2



**Euro Quest II**  
November 11<sup>th</sup> - 14<sup>th</sup>, 2004  
Days Hotel  
Timonium, MD

A dozen repeat-play format tournaments for "European" style games including the popular Wild Card event for those who love variety with an added night for Open Gaming.





## BRITANNIA

"Devon"  
Turn XV



## BRITANNIA

"Frisian"  
Turn V



### The Cast:

Blue: Kevin Wilson  
Purple: Rudy Zodda

Green: Rick Copeland  
Red: Peter Boyum

### Turn XV

#### Board

**Welsh (1):** 2A @ Clywd, Dyfed; Gwent, Gynnedd, Powys; 1A @ Cornwall, Devon.  
**Brigantes (1):** 2A @ Dunedin, Lothian, Mar, Pennines; 1A @ Cheshire.  
**Picts (0.5):** 3A @ Caithness; 2A @ Skye; 1A @ Alban, Dalraida, Hebrides.  
**Caledonians (0.5):** 2A @ Orkneys.  
**Norsemen (2):** 2A @ Moray.  
**Dubliners (0):** 3A @ Strathclyde; 1A @ Cheshire, Cumbria, Galloway.  
**Danes (1):** 4A @ Hwicce, S Mercia; 2A @ Essex, N Mercia; 1A @ Avalon, Bernicia, Lindsey, Norfolk, York.  
**Jutes (1.5):** 2A @ Kent.  
**Norwegians:** Harald, 10A @ North.  
**Saxons (1.5):** 2A @ Wessex; 1A @ Downlands; Harold @ ???.  
**Normans:** Willie, 6A, 4C @ Channel.

**Score:** Green 112.5, Red 79.5, Blue 52, Purple 44.5.

Danes to Norwegians: You can't hide in the North Sea forever! Come ashore and taste our axes of death! (Or, if you wish to live here, our TAXES to death!)

**Norwegians:** 1st Wave: 2A, Harald @ North-York (4+1, 1:3 -1 Dane), 2A @ North-Bernicia (3, 1:1; 6, 3:6 -1 each), 2A North-York-N Mercia (1, 1:1 Dane r-Hwicce), 2A North-Frisian-Norfolk (5, 1:3 -1 Dane), 2A North-Frisian-Suffolk (5, 4:5 -1 each). 2nd Wave:

**Score:** Green 112.5, Red 79.5, Blue 52, Purple 44.5.

#### Board

**Welsh (1):** 2A @ Clywd, Dyfed; Gwent, Gynnedd, Powys; 1A @ Cornwall, Devon.  
**Brigantes (1):** 2A @ Dunedin, Lothian, Mar, Pennines.  
**Picts (0.5):** 3A @ Caithness; 2A @ Skye; 1A @ Alban, Dalraida, Hebrides.  
**Caledonians (0.5):** 2A @ Orkneys.  
**Norsemen (2):** 2A @ Moray.  
**Dubliners (2.5):** 2A @ Cheshire, Galloway; 1A @ Cumbria, Strathclyde.  
**Danes (0.5):** 6A @ March, 3A @ Hwicce; 2A @ Lindsey; 1A @ Avalon, Essex, N Mercia\*, S Mercia, .  
**Jutes (2.5):** 1A @ Kent, Sussex.  
**Norwegians:** Harald, 2A @ York; 2A @ N Mercia, Norfolk; 1A @ Bernicia, Suffolk.  
**Saxons (1.5):** 2A @ Wessex; 1A @ Downlands; Harold @ ???.  
**Normans:** Willie, 6A, 4C @ Channel.

**Legend:** A = infantry army, C = cavalry army, F = fort, L = legion or leader, pp = population point, R = raider, r-??? = retreats to ???, w-??? = withdraws to ???, (\*) = in melee, \_#\_ = attack by/against cav/legion

Current map and game transcript can be found on the website.

### The Cast: Nations in Italics are extinct, in parentheses are not yet in play.

**A (Hanna):** Romans, (R-Bs, Norsemen, Norwegians)  
**B (Anderson):** Welsh, Jutes, (Normans)  
**C (Buttita):** Brigantes, Caledonians, (Danes)  
**D (Boyum):** Picts, Irish, Angles  
**E (Fruch):** *Belgae*, Scots, Saxons, (Dubliners)

#### Board:

**Romans (A):** 2L @ York; 1L, F @ Bernicia, Cheshire, Essex, Kent, S Mercia, Suffolk; 1L @ Hwicce, Pennines; F @ Alban, Avalon, Dunedin, Lindsey, Lothian, March, N Mercia, Sussex.  
**Welsh (B, 2):** 3A @ Downlands; 2A @ Gwent; 1A @ Chwyd, Cornwall, Devon, Gwynedd, Powys.  
**Brigantes (C, 0):** 4A @ Strathclyde; 1A @ Cumbria, Galloway; L @ ???.  
**Picts (D, 2.5):** 2A @ Caithness, Mar; 1A @ Dalriada, Moray, Skye;  
**Caledonians (C, 1):** 2A @ Orkneys; 1A @ Hebrides.  
**Irish (D, 0):** 4R @ Atlantic.  
**Scots (E, 0):** 1R @ Irish.  
**Jutes (B, 0):** 4R @ Channel.  
**Saxons (E, 0):** 3R @ Channel, 3A @ Wessex.  
**Angles (D, 0):** 5R @ Frisian.

**Score:** A(24), C(23), E(9.5), B(9), D(9)

**Romans:** 1A Pennines-York-March, 1A Bernicia-York, 1A York-N Mercia-Suffolk-Norfolk.

**Welsh (2):** Grow 4 pp. Add 1A @ Powys & Gwynedd. 1A Powys-Dyfed, 1A Gwynedd-Dyfed.

**Brigantes (0):** Romans allow growth. Grow 2.5 pp. Place L in Strathclyde. Hold.

**Picts (2.5):** Grow 2.5 pp. Add 1A @ Mar. 2A Mar-Dunedin (3, 1:6 Pict r-Mar).

**Caledonians (1):** Grow 1 pp. ....

**Irish (0):** ...

#### Board:

**Romans (A):** 2L @ York; 1L, F @ Cheshire, Essex, Kent, March, S Mercia, Suffolk; 1L @ Hwicce, Norfolk; F @ Alban, Avalon, Bernicia, Dunedin, Lindsey, Lothian, N Mercia, Sussex.  
**Welsh (B, 0):** 3A @ Downlands; 2A @ Dyfed, Gwent; 1A @ Chwyd, Cornwall, Devon, Gwynedd, Powys.  
**Brigantes (C, 2.5):** 4A, L @ Strathclyde; 1A @ Cumbria, Galloway.  
**Picts (D, 2):** 2A @ Caithness, Mar; 1A @ Dalriada, Moray, Skye;  
**Caledonians (C, 1):** 2A @ Orkneys; 1A @ Hebrides.  
**Irish (D, 0):** 4R @ Atlantic.  
**Scots (E, 0):** 1R @ Irish.  
**Jutes (B, 0):** 4R @ Channel.  
**Saxons (E, 0):** 3R @ Channel, 3A @ Wessex.  
**Angles (D, 0):** 5R @ Frisian.

**Score:** A(27), C(17), E(9.5), B(9), D(9)

Current map and game transcript can be found on the website.



## DUNE

### Turn 6 Nexus



**ERRATA:** H captured Soo Soo Sook and killed him for the 2S. Due this time are Nexus orders.

#### The Board:

**ATREIDES (Nichols):** 3T @ Broken Land, 7R, 6S, 1C  
**BENE GESSERIT (O'Hara):** 3T @ Arrakeen; 2T @ Carthag; 1T @ Tueks Sitch, Imperial Basin, Minor Erg, 13S, 12R, 1C  
**BENE TLEILAXU (Buttitta):** 1S, 3C, Tr @ Habbanya Ridge Sitch  
**FREMEN (Barrett):** 5T @ Sitch Tabr, 3T, 2\* @ Hagg Basin, 8S, 4C  
**GUILD (Anderson):** 6T @ Tuek's Sitch, 3R, 1S, 2C  
**HARKONNEN (Wilson):** 5T Carthag, 12R, 13S, 8C  
**LANSRAAD (R Fisher):** 20R, 2S, 4C  
**Spice:** None  
**Storm:** Sector 7  
**Tanks:** Lady J, Otheym, T Hawat, B Rabban, Dr Y, S Tuek, Guild Rep, SS Sook, A 8T, F 7T, H 4T, G 11T

**6.2 Spice Blow:** Shai-Halud appears in Habbanya Erg, consuming A 2T and 4S. Nexus. No alliances change. Spice blows occur in The Great Flat (10) and Sihaya Ridge (6). The next Spice card is \_\_\_\_\_.

**6.3 Bidding:** There are four cards available. They are by type: \_\_\_\_\_, \_\_\_\_\_, \_\_\_\_\_, \_\_\_\_\_.

#### PRESS:

#### The Board:

**ATREIDES (Nichols):** 3T @ Broken Land, 7R, 6S, 1C  
**BENE GESSERIT (O'Hara):** 3T @ Arrakeen; 2T @ Carthag; 1T @ Tueks Sitch, Imperial Basin, Minor Erg, 13S, 12R, 1C  
**BENE TLEILAXU (Buttitta):** 1S, 3C, Tr @ Habbanya Ridge Sitch  
**FREMEN (Barrett):** 5T @ Sitch Tabr, 3T, 2\* @ Hagg Basin, 8S, 4C  
**GUILD (Anderson):** 6T @ Tuek's Sitch, 3R, 1S, 2C  
**HARKONNEN (Wilson):** 5T Carthag, 12R, 13S, 8C  
**LANSRAAD (R Fisher):** 20R, 2S, 4C  
**Spice:** None  
**Storm:** Sector 7  
**Tanks:** Lady J, Otheym, T Hawat, B Rabban, Dr Y, S Tuek, Guild Rep, SS Sook, A 10T, F 7T, H 4T, G 11T

Due next time are your orders for Turn 6 Bidding through Turn 7 Spice Blow. If there be Combat, we'll halt for that. Ms Nar craves Press. Transcript and map are posted on the website. Your cards are:



## TITAN

### Green Eliminated! Turn 14



**ERRATA:** Last time was Turn 13, not 14.

**COMBAT:** Blue Anchor defeats Green Hook @ Plains 115, gains 60 VP. Green Dagger defeats Red Maltese Cross at Plains 15, gains 48 VP. Brown Bell defeats Green Fleur-de-Lis at 134, gains 80 VP, slays the Green Titan and gains 128 VP for Green's remnant legions. Mustered were Angel(x2), Cyclops, Ranger.

**SLAIN TURN 13:** Angel(x3), Behemoth, Centaur(x7), Cyclops(x7), Gorgon(x3), Lion(x3), Ogre(x3), Ranger(x4), Titan.

#### THE BOARD:

Brown (Frueh), 8-4, 208 VP, dr=1: Spider 37-42; Antlers 3-100 (Combat); Chest 135-134 spawns Hourglass; Bearpaw 6-200; Bell 134-133.  
 Blue (York), 6-4, 60 VP, dr=5 Batman 122-23. Octopus 28-27; Anchor 115-20, Twister 116 hold.  
 Red (Bargender), 8-4, 204 VP, dr=1: Heart 41-100 (Combat).

**MUSTERED:** Cyclops, Guardian, Minotaur, Ranger, Troll.


**COMBAT:** Red Bleeding Heart vs Brown Antlers in 100. Brown is the defender by virtue of a random roll.

**FORCE POOL:** Archangels (6), Angels (15), Behemoths (15), Centaurs (3), Colossi (10), Cyclops (4), Dragons (18), Gargoyles (7), Giants (18), Gorgons (15), Griffons (18), Guardians (5), Hydra (10), Lions (21), Minotaurs (20), Ogres (5), Rangers (22), Serpents (10), Trolls (15), Unicorns (12), Warbears (21), Warlocks (5), Wyverns (17).

**DEAD POOL:** Behemoth, Centaur(21), Cyclops(17), Gargoyles(10), Gorgon(4), Lion(5), Ogre(11), Ranger(3), Titan(3), Troll(8).

Your Turn 15 die roll is: \_\_\_\_\_. Current masterboard and game transcript are on the website.

Your Legions are:



## WAM III

January 27<sup>th</sup> - 30<sup>nd</sup>, 2005

Hunt Valley Inn, Hunt Valley, MD

The two-player, card-driven wargame genre is covered in depth in our annual Winter Activation Meeting.

• We the People

• Hannibal

• Wilderness War

• Paths of Glory

• Barbarossa to Berlin

• For the People

9



# FRUEH IS MISSING

SR 4 continues

FIM

## PLAYER STATUS: (\*Denotes Presidency)

Zodda: \$245, SVNRR, D&H, 1 C&O, 1 CP, 1 B&O

Hanna: \$265, 4 NYNH&H\*, 2 B&O

Bolduc: \$26, B&Opc, 3 B&O\*, 2 C&O, 2 CP\*

Copeland: \$290, 2 C&O\*, 3 PR\*

Zieske: \$328, 1 CP, 3 B&M\*

## CORPORATE STATUS:

Corp	Pres	Price	Par	IO	Pool	Cash	Trains	Tokens
B&O	PB	A100	100	6	0	\$1000	--	(I15), 3
NYNH&H	CH	F71	90	3	0	\$80	2223	G19, 1, C&A
C&O	RC	H68a	--	0	5	\$50	233	F6, 2, M&H
CP	PB	H68b	71	2	4	\$170	223	A19, B16, 2, C&SL
B&M	RZ	A100	100	7	0	---	--	(E23), 2
PRR	RC	B90	100	5	1	---	--	(H12), 3

## SR #4: (continued):

Copeland buys 1 PRR from initial offering (-\$100).

Zieske buys 1 B&M (-\$100).

Zodda buys 1 B&O (-\$100).

Hanna buys 1 B&O (-\$100).

Bolduc sells 3 B&O, buys 1 C&O (+\$300-68); B&O falls to D78; PB Prez of C&O, CH Prez of B&O.

Copeland buys 1 CP from the pool for -\$68.

Zieske buys 1 B&O from pool, and then sells it, falls to E71.

Zodda passes.

Hanna buys 1 B&O from the pool. (-\$71).

Bolduc buys 1 CP from the pool. (-\$68).

Copeland buys 1 PRR from initial offering. (-\$100) PRR floats!

Zieske buys 1 B&M from initial offering (-\$100).

Zodda ...

## PLAYER STATUS: (\*Denotes Presidency)

Zodda: \$145, SVNRR, D&H, 1 C&O, 1 CP, 2 B&O

Hanna: \$94, 4 NYNH&H\*, 4 B&O\*

Bolduc: \$190, B&Opc, 3 C&O\*, 3 CP\*

Copeland: \$122, 2 C&O, 5 PR\*, 1 CP

Zieske: \$128, 1 CP, 5 B&M\*

## CORPORATE STATUS:

Corp	Pres	Price	Par	IO	Pool	Cash	Trains	Tokens
PRR	RC	B90	100	4	1	\$1000	--	(H12), 3
B&O	CH	E71	100	2	2	\$1000	--	(I15), 2
NYNH&H	CH	F71	90	3	3	\$80	2223	G19, 1 C&A
C&O	PB	H68a	--	0	5	\$50	233	F6, 2 M&H
CP	PB	H68b	71	2	2	\$170	223	A19, B16, 2 C&SL
B&M	PZ	A100b	100	5	0	---	--	E23, 1

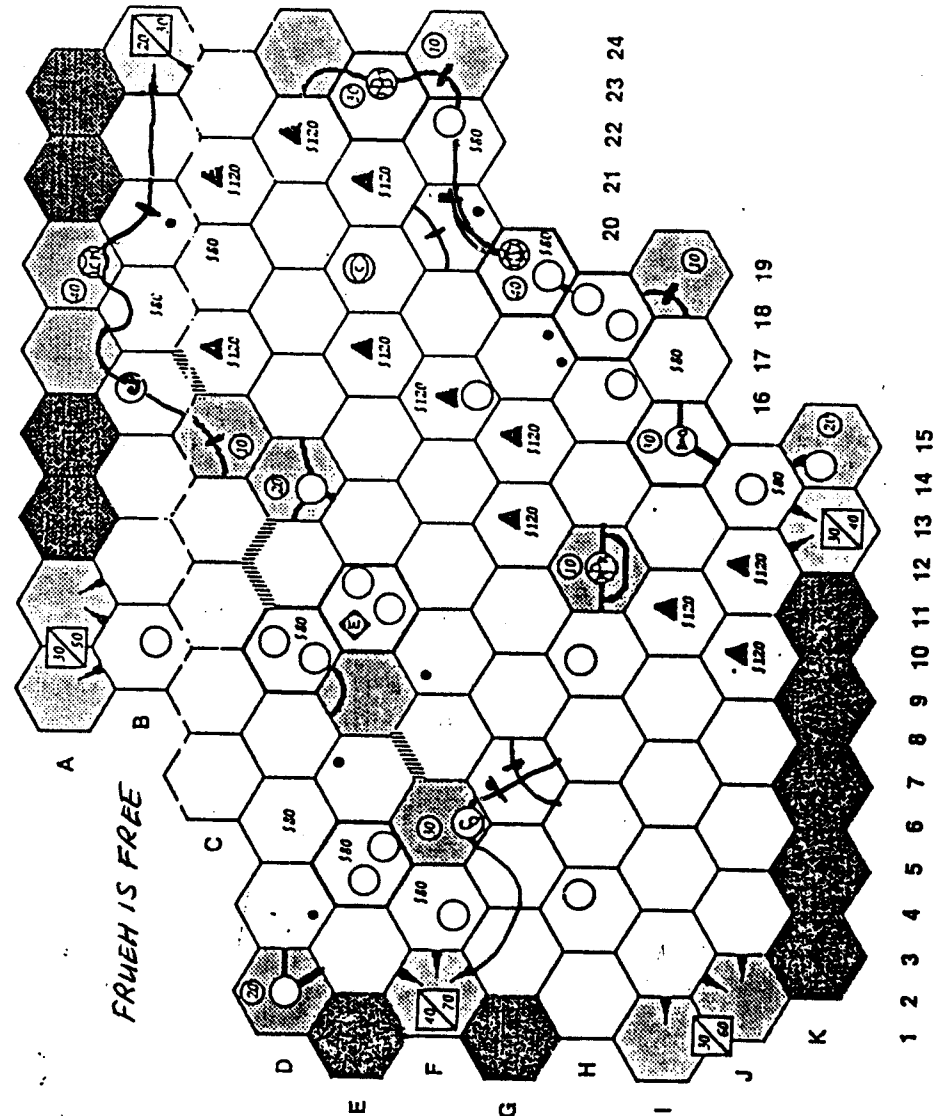
The Bank has \$9,021.

AVAILABLE TRAINS: 3 4444 555 66 DDDDDD

## AVAILABLE TILES:

Yellow: #1(0), #2(1), #3(2), #4(2), #7(3), #8(7), #9(6), #55(1), #56(1), #57(4), #58(1), #69(0)

Green: #14(3), #15(2), #16(1), #18(1), #19(1), #20(1), #23(3), #24(3), #25(1), #26(1), #27(1), #28(1), #29(1), #53(2), #54(1), #59(2)



Down  
with the  
King

Some Speak!  
No Takers on Rematch



# The Cast:

**D&D Anderson:** Congratulations to King Fowble on his win.

**A. Bargader:** Congratulations Wade and Duke Robert! Rick and Wade really showed how this game is supposed to be played.

I never seemed to be able to recover from a mid-game bad prestige table roll.

Thanks to all the players and to Paul for running this rather book-keeping heavy title.

**Rick Copeland:** Nice job Wade. You really crushed my faction with your murderous usurpation. And thanks again to Paul for running this game. It must really be a nightmare to judge.



"Good heavens. You're right. Wood and bronze are different!"

## PSYCOCON 2004 UPDATED INFORMATION:

From 2pm Friday 8th October to 6pm Sunday 10th October 2004

The Clifton Hotel, SCARBOROUGH, UK

£4 per day, or £8 for the weekend if booked before 31st August.

£6 per day if paying on the door.

Overseas attendees admitted FREE!

>>>> Full Registration Details, including a downloadable form at:

<http://www.psychozine.co.uk/psychocon>.

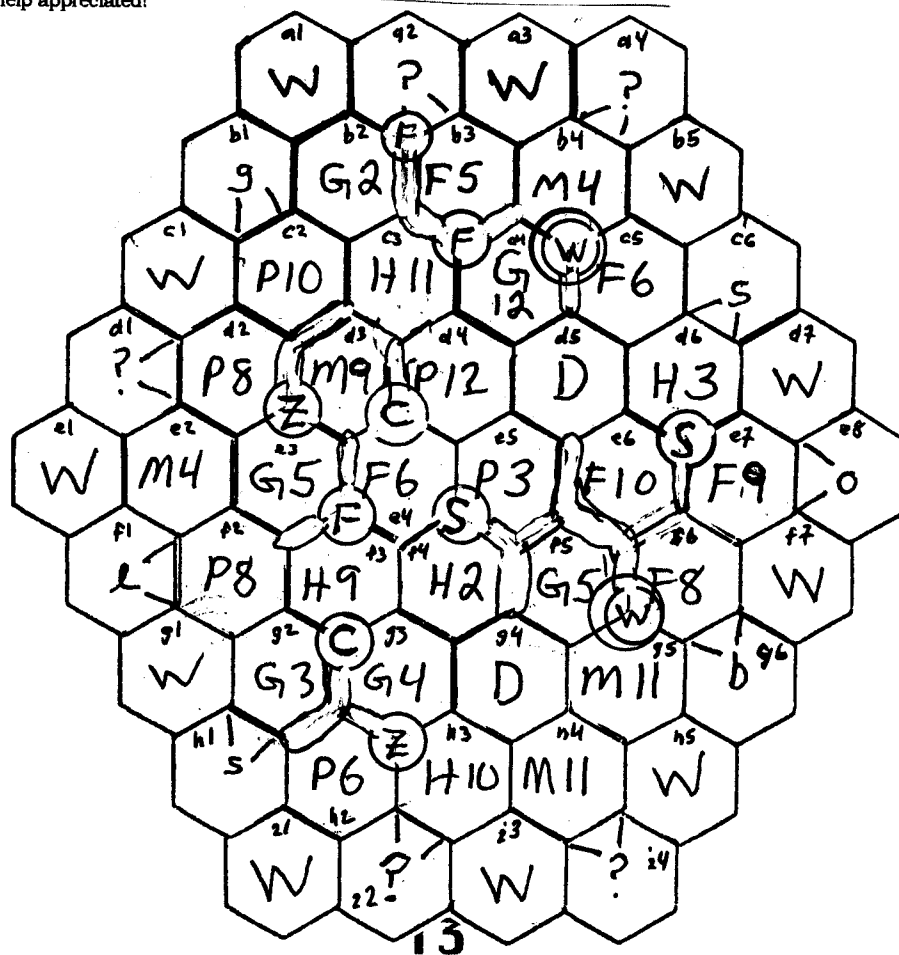
If you are attending - please REGISTER as soon as possible.

>>>> Games to be played - many and various! Please bring any games that you particularly would like to play. You are sure to find players!

>>>> Prizes! There are many ad-hoc tournaments. Prizes have been donated by MAYFAIR GAMES, EAGLE GAMES, RIO GRANDE GAMES, SPIRIT GAMES, and THE BOARD GAMES COMPANY with more to come!

>>>> Accommodation is booked separately: The Clifton has some single rooms available @ £35 / night. It also has double and twin rooms. Book early to avoid disappointment! Telephone: 01723 375691. Other accommodation, to suit all pockets is available in nearby hotels and guest houses via the Tourist Information Centre - 01723 373333.

>>>> Publicity: Please can you undertake any publicity you are able to do on our behalf to your mates, players in games you currently play in, and to any games clubs you are a member of. Your help appreciated!



# HoR

## THE KNIGHTS TALE

Famine & Mysticism!!  
Turns 4.7 & 5.3



### The Cast (in Tiebreak Order)

BARCELONA (Butitta): \$76, 15C, 3K, 50M, SV-10  
VENICE (Hanna): \$67, 13C, 3K, 50M, SV-10  
GENOA (Copeland): \$67, 11C, 4K, 80M, Gal-8  
PARIS (Frueh): \$97, 13C, 3K, 70M

### Advances

N,R,S,X  
A,I,R,S  
A,E,N,R,W  
A,E,I,N,R,W

There is a surplus of metal; there is a shortage of grain.

### 4.7: BID PHASE

B & V bid 10t. G bids 30t. P bids 32t. B pays \$6 to relieve the surplus of metal.

### 5.3: CARD PLAY PHASE

B (10t) plays "Metal" (B +\$24, GP +\$6).  
V (10t) plays "Stone" (V +\$9, GP +\$4) and "Timber" (V +\$12, BG +\$3).  
G (30t) plays "Famine" (V +4 ML, BP +3 ML, G +2 ML) and "Grain" (G +\$36, BP +\$16), shortage removed.  
P (32t) plays "Mysticism Abounds" (G,P,V +3 ML; B +4 ML, "Cloth" (P +\$45, V&G +\$20).

### The Cast (in Tiebreak Order)

BARCELONA (Butitta): \$103, 15C, 2K, 80M, SV-10, 10t  
VENICE (Hanna): \$98, 13C, 1K, 60M, SV-10, 10t  
GENOA (Copeland): \$106, 11C, 2K, 100M, Gal-8, 30t  
PARIS (Frueh): \$136, 13C, 1K, 100M, 32t

### Advances

N,R,S,X  
A,I,R,S  
A,E,N,R,W  
A,E,I,N,R,W

### The Board:

B: C @ Alg Ang, Basq BAR Cai Con Fez Gra Lis Sev Smy Tan Tol Val Waf; 1T @ Ora.  
G: C @ Bel Bor Gen Lyo Mar Nap Rom Sic Tri Tun Var.  
P: C @ Acr Alep Basl Bru Col Dji Flo Mil Nur PAR Pra Str Sue; 1T @ Lev StG.  
V: C @ Alex Bud Cre Cyp Dub Erz Mon Pot Salo StM Tre VEN Vie; 1T @ Gal, Kaf.

Due next time are orders for Token Bid and Card Play phases. Your cards are:

**Legend:** c = white circle, C = colored circle, K = cards, M = misery, ML = misery level, t = white token, T = colored token. See website for transcript and map.

## AIR BARON

"Boston"

### Turn 7



### The Cast

Rick Copeland: Hindenburg Lines (Orange), \$21, BWI, ORF, PIT, RDU (DCA), BOS, BUF, PHL, PVD, SJU, SYR, ORY (JFK), CLE, SLC 180 MS  
Cary Nichols: TransCon Air (Green), \$0, ELP, ABQ, TUS (PHX), MCI, OMA (DIA), LIT, OKC, TUL (DFW), BNA 100 MS  
Rudy Zodda: Trans Tucan (Red), \$15, MCO, PBI, TPA (MIA), AUS, MSY, SAT (HOU), CVG 100 MS  
Paul Barrett: Barrett Airline Retro Transportation (Purple), \$12, MKE, MSP, STL, IND (ORD), MEM, CLT 120 MS

### TURN 7:

BART is out of fare wars, draws OKC (\$1 to TCA) and TUL (TCA +\$1), buys NRT (-\$10).  
HL is out of fare wars, draws ORY (\$20 to HL) and MCO (\$7 to TT), buys DAY(-\$2) +20 MS.  
TT is out of fare wars, draws ABQ (\$2 to TCA and PHL (\$6 to HL), buys NAS (-\$15).  
TCA is out of fare wars, draws BUF (\$3 to HL) and MSY (\$2 to TT), buys BHM (-\$3).

### Press:

HL to BART-Peace, brother. We're all trapped in this commercialism mess. I say we all go socialist and give one another a spur line that we don't really need. I mean, who needs ALL this money anyway??? Da Man just gonna tax it right outta us anyway. So hows about it Bart? Wanna trade me Milwaukee (we love beer) for Salt Lake City? You could open a groovy commune there.

### TURN 8:

Player Order: BART (ORY, CLT), HL (OKC, CLE), TCA (Local Competitor, SJU), TT (PHX, SAT).

### The Cast

Rick Copeland: Hindenburg Lines (Orange), \$48, BWI, ORF, PIT, RDU (DCA), BOS, BUF, PHL, PVD, SJU, SYR, ORY (JFK), CLE, DAY (DTW) SLC 200 MS, drew \_\_\_\_\_  
Cary Nichols: TransCon Air (Green), \$1, ELP, ABQ, TUS (PHX), MCI, OMA (DIA), LIT, OKC, TUL (DFW), BNA, BHM 100 MS  
Rudy Zodda: Trans Tucan (Red), \$9, MCO, PBI, TPA, NAS (MIA), AUS, MSY, SAT (HOU), CVG 100 MS  
Paul Barrett: Barrett Airline Retro Transportation (Purple), \$2, MKE, MSP, STL, IND, NRT (ORD), MEM, CLT 120 MS

Due next time are your orders for Turn 8. Note that only two domestic spokes are left unbought, CMH and JAX. TCA and TT should provide conditional orders.

## Enlightenment VIII

March 18<sup>th</sup> - 20<sup>nd</sup>, 2005

Hunt Valley Inn

Hunt Valley, MD



A four-round swiss format of *Age of Renaissance* using a special best three-out-of-four scoring system that encourages fast play and keeps most players in contention throughout.





## KREMLIN

Turn 1.1-1.2



### CAST (in Table Order):

Paul Bartlett: Party Bureaucrats (PB), 3 cards  
 Mike Scott: The California Connection (TCC), 3 cards  
 Dave Anderson: Decaying Licentious Antequarians (DLA), 3 cards  
 Rudy Zodda: Red Zealots (RZ), 3 cards  
 John Butitta: Proletariat Worker's against Imperialism (PWI), 3 cards  
 Cary Nichols: Re-Education Development Society (REDS), 3 cards

### POLITBURO:

Party Chief:	Aparatschik (A)	80+
KGB Head:	Doberman (L)	63
Foreign Minister:	Badenuff (X)	53
Defense Minister:	Manjak (P)	61
Ideology Chief:	Satin (O)	62s
Industry Minister:	Strychnin (T)	57w
Economy Minister:	Patina (S)	58
Sport Minister:	Krakemheds (E)	72
Candidates:	CHJMV	People: BDFGIKNQRUWYZ

Set Up: REDS reveals 3 ip on "X".

### TURN 1

**1.1 CURE PHASE:** TCC reveals 3 IP on "A". TCC has Party Chief Aparatschik take the Cure. Aparatschik still ages 1 SP for being Party Chief. Industry Minister Strychnin ages 1SP to 58 for being weak in office. TCC reveals 1 IP on H, then plays card #40, assassinating him [13], then denounces "X", Boris is convicted and executed [14].

**1.2 PURGE PHASE:** PWI reveals 1 IP on Doberman, BART reveals 3 IP on "L", RZ reveals 5 IP, PWI reveals 4 more IP. We have an IP tie and since REDS doesn't know what cards he has yet, we'll halt here to allow higher bids and/or tie break negotiations.

Due next time: Are orders for the rest of the Purge Phase, the Spy Investigation Phase, and the Health Phase. No need to invoke Ms Nar's (un)kind mercies on the Health rolls as my venerable Apple Igs performs them.

### POLITBURO:

Party Chief:	Aparatschik (A)	81+@	TCC(3)
KGB Head:	Doberman (L)	63	RZ(5), PWI(5), BART(3)
Foreign Minister:	<VACANT>		
Defense Minister:	Manjak (P)	61	
Ideology Chief:	Satin (O)	62s	
Industry Minister:	Strychnin (T)	58w	
Economy Minister:	Patina (S)	58	
Sport Minister:	Krakemheds (E)	72	
Candidates:	CJMV	People: BDFGIKNQRUWYZ	
The Wall:	HX	Siberia:	

**LEGEND:** s = strong, w = weak, + = sick, ++ = ill, @ = Cure, ? = under investigation, \_ = position is vacant

## JUNTA

We begin?

### THE CAST: (and Table order)

Rick Copeland      D&D Anderson      Chuck Hanna      John Butitta

Note that we have room for three more players and if some join in, I'll let ya'll know soonest. PBEM players only, due to the dynamics of coup warfare. Please begin the nominations by 1 Sep so we can get the set-up over by the next issue.

PBEM system/House Rules follow.

Your cards are: \_\_\_\_\_

## PBEM RULES FOR JUNTA

The standard Rules as published by West End Games © 1985 will be used except as altered here.

**CONCEPT:** The game will play much like the ftf game except that the GM will handle all card draws and maintain a record of Bank deposits/withdrawals and that the players will communicate by e-mail.

**SET-UP:** The Game Master (GM) will randomly assign table positions and "deal" each player five political cards. He will inform all players of the Table order and inform each player secretly of his/her political cards.

**INITIAL ELECTION:** Player #1 will have the first opportunity to nominate a player to be El Presidente and to choose a faction name/color. Nominations (and faction/color selection) then proceed in table order. Then the second round of voting. If no El Presidente is elected, further rounds of nominations/voting will occur until El Presidente is elected. The first game year then begins.

### GAME YEAR

A/C: GM draws political cards and money cards, informing the appropriate players

B: El Presidente may (re)assign cabinet positions

D: El Presidente proposes the Budget, and the Chamber of Deputies votes thereon

E: Each player sends his Location to the GM

F: Assassinations are announced and attempted.

G: The Bank does business (maybe).

H/I/J: A coup may occur. If so, there follows a Coup aftermath then the Bank does business.

### COUPS

Dice rolls will be resolved either by the GM or by dice@pbm.com.

### DEADLINES:

Players will normally be expected to make their moves within 48 hrs of the previous move. Extensions will be available.

### NMR:

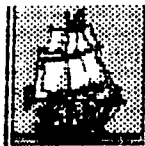
Should a player disappear, the following are the default orders

- Abstain on all votes.
- Location will be chosen at random (exc: the player will go into exile the 2nd time this occurs); if location is the Bank, the player will deposit all monies in pocket if not assassinated
- No assassination attempted
- Remains loyal during coups
- Units will only fire if fired upon.
- Cards will be discarded at random to maintain a 6-card hand

Should El Presidente fail to send orders, the following are his default orders

- Ministries will not be reassigned
- Ms Nar will propose a Budget

## ON DECK



1830: Fruch, Zodda, Zieske  
 1835: Hanna, Zieske  
 1856: Hanna, Fruch, Zieske  
 1870: Zieske, Hanna, Fruch  
**BLACKBEARD:** Zodda, A Bargender  
**BRITANNIA:** Zieske  
**COLONIAL DIPLOMACY:** Copeland, Nichols, Anderson, Boyum; need 3 more.  
**DIPLOMACY:** Boyum, Fryling, Nichols confirmed; Curtis iffy.  
**GUNSLINGER:** Scott, Fowble, R Fisher; need 4 more  
**HISTORY OF THE WORLD:** Zieske, Morrison and Anderson, need 2 to 4 more.  
**JUNTA:** Copeland, Dave A, Hanna, Buttitta  
**KINGMAKER:** Deb Anderson, R Fisher, Shacklett, Scott  
**MACHIAVELLI** (Gunboat): Have 3.  
**MAGIC REALM:** Buttitta, Deb A  
**MAHARAJA:** Hanna, Zodda, Anderson  
**MERCHANT OF VENUS:** R Fisher, Deb A, Khaoz?  
**PUERTO RICO:** R Fisher, Buttitta  
**RUSSIAN CIVIL WAR:** Scott  
**SILVERTON:** Zieske, Deb A  
**WIZARD'S QUEST:** A&J Bargender, Farrow?, R Fisher, Deb A

**OTHER POSSIBILITIES:** 1829 (N OR S), AFTER THE HOLOCAUST (\*GM Fowble), GODSFIRE, KAMAKURA, MONSTERS RAVAGE AMERICA, PLANET MINERS, SAMARAI.  
 \* Offered by guest GM, when space is available.

## OUR SUBSCRIBERS

Dave & Debbie Anderson, 20832 Tuck Rd, Site 32, Farmington Hills, MI 48336; (248)473-7482; andersond4@michigan.gov  
 Alan Bargender, 1517 Creekside Road, Green Bay, WI 54311; alanmb777@hotmail.com  
 Paul Barrett; pdb@htraganadragon.plus.com  
 John Boardman, 234 East 19th St, Brooklyn, NY 11226-5302  
 Peter Boyum, 7615 Morningside Drive, Granite Bay, CA 95746; (916) 705-2091; peterboyum@msn.com  
 Tom Butcher, 674 Roanoke Ave, Cuyahoga Falls, OH 44221; chikakob@msn.com  
 John Buttitta, 339 Ninth, Neenah, WI 54956; (414) 725-7218; docjob@tds.net  
 Rick Copeland, 1531 Pack Horse Rd, Winchester, VA 22603; (540)888-4420; cope655321@aol.com  
 Michael Fisher, 43 W Mannheim St Apt 2, Philadelphia, PA 19144-2942; (215) 436-9966; mikesfisher65@yahoo.com  
 Ron Fisher, 210 Normandy Dr, Wilmington, NC 28412; (910) 395-8330; skylark3@charter.net  
 Wade L. Fowble, 1127 Longbrook Rd, Lutherville, MD 21093-6307; (410) 828-8753; wfobe@aol.com  
 Mark Fruch, 1128 Olympus Dr, Naperville, IL 60540; (630) 357-7780; mark\_fruch@msn.com  
 Chuck Hanna, 379 Willett Ct, Severna Park, MD 21146-1912; (410) 544-3077; ochanna76@yahoo.com  
 Chris Hassler, 2000 S Armour Ct, La Habra, CA 90631; chassler@adelphia.net  
 Tom Howell, 365 Storm King Rd, Port Angeles, WA 98363; (360) 928-9698; off-the-shelf@olympus.net  
 Andy Lischett, 2402 Ridgeland Ave, Berwyn, IL 60402  
 Philip McCabe, 615 Smith St, Plymouth, WI 53073; (920) 892-7554; pmccabe@excel.net  
 Lee McConnell, 2023 Stancress Rd, Dublin, OH 43016-9546; blackhawk@netwalk.com  
 Wayne Morrison, LTSI-ASAC Khamis 05267, 7150 Troy Hill Dr, Elkridge, MD 21075; thomascat\_ksa@yahoo.com  
 Cary Nichols, 756532-938 S FM 1673, Snyder, TX 79549-8812.  
 Tony Rezzarday, 18-D NW Cape Dr, FWB, FL 32548; (850) 243-0986; tonyrezz@netscape.net  
 Paul Saunders, 6 North Hall Dr, Carriere, MS 39426; (601) 798-2347; kraktoof@hotmail.com  
 Mike Scott, 16603 Colonial Dr, Fontana, CA 92336; (909) 357-6030; mikescmag2@juno.com  
 Jack & Rose Shacklett, 365 Hobbs-Reesor Rd, Vine Grove, KY 40174; (502) 828-4281; jlsack@bbtel.com  
 Kerry Watson, 2138 Clovernook Lane, Neenah, WI 54956; (920) 882-5505; kwatson1@new.rr.com  
 Kevin Wilson, 18623 Santa Maria Dr., Baton Rouge, LA 70809-6702; (225) 751-3857; ckevinw@aol.com  
 Andrew York, PO Box 201117, Austin, TX 78720-1117; wandrew@compuserve.com  
 Paul Zieske, 3501 Keenan Lane, Glenview, IL 60025; (847) 498-9237; zieskep@juno.com  
 Rudy Zodda, 7 Hansen Ave, New City, NY 10956; (845) 708-9056; rzodda@aol.com

\*\*\*\*\*  
 DEADLINE FOR MOST GAMES IS 1800 CENTRAL TIME 10 Sep 04  
 \*\*\*\*\*

## The Bottom Line

This is BORIS THE SPIDER, a 'zine dedicated to the play of multiplayer games. BORIS is usually published following the first Friday of the month by Paul & Meg Bolduc, 203 Devon Ct, Ft Walton Beach, FL 32547-3110 and currently has a subscription price of \$10.50 for 12 issues in hardcopy (\$13.25 in Canada, and \$16 overseas) or a token \$1 by e-mail (waived if overseas). A hardcopy sub will also include an e-mail sub. Make checks payable to "Paul Bolduc". BORIS can be reached at (850) 863-9081, or prbolduc@aol.com. If phoning, expect to be greeted by an answering machine. If we're here, not engaged in an epic computer battle or enthralled in baseball, hockey, or college football, and recognize your voice, you may get to talk to a real human, so don't hang up upon hearing our recorded message (it changes every power outage). Visit the BORIS Website at: <http://hometown.aol.com/prbolduc/boris/borishome.htm>



## STELLAR CONQUEST

**William T. Riker:** Due are Turn 41 combat to movement orders for Turn 42-44.

**Kurzon Dax:** Orders for Production 12 and movement to Turns 13-16 are due soonest.