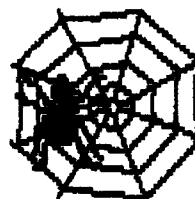


TABLE OF CONTENTS	
Addresses	p 14
AGE OF RENAISSANCE	p 11
BRITANNIA	
"Devon"	p 2
"Triton"	p 7
DIPLOMACY	
1890	p 2
"Boris XVII"	pp 8-9
JUNTA	p 5
KREMLIN	p 10
MACHIAVELLI	
II	p 3
Gunboat	p 4
MAHARAJA	pp 6,3
On Deck	p 14
PUERTO RICO	p 12
SETTLERS OF CATAN	p 13
SOURCE OF THE NILE	p 15
STELLAR CONQUEST	p 15
TITAN	p 4

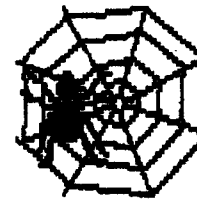
**BORIS THE SPIDER**  
 C/O 203 Devon Ct  
 FWB, FL 32547-3110  
<http://hometown.aol.com/prbolduc/boris/borishome.htm>



VOLUME VIII, #18

## BORIS THE SPIDER

A Journal of Duplicitous Doings,  
 Raw Power, and Naked Greed  
 "Oh, what a tangled web we weave  
 When first we practice to deceive!"  
 --Sir Walter Scott--



9 Mar 05

(#235)

### BORIS is 20!

This issue marks the 'zine's 20th birthday and the 13th birthday of the multi-game issues. To celebrate we've posted pdf files for the first three plus volumes to the website. Don't think I have enough web space for all seven past volumes, nor those from this -- the last issue alone takes up 864 kB as a pdf file.

Well, it took us over 7 years and seven players to finish it, but at last we have a winner in "William T. Riker", aka "Willie". Ron Fisher gained the kudos with an unofficial score of 35 VP to Kevin Wilson's 19 VP to Mike Wyatt/Rick Copeland's 9 VP to Pitt Crandlemire/Eddy LaForge/Wayne Morrison's 1 VP. The game started around November 1997 as an e-mail game running parallel with "T. William Riker" aka "Tommy" which was won by Rick Copeland many moons ago.

We have a quorum for HISTORY OF THE WORLD (could use one or two more, though), but no space. Either a game needs to end without a replacement or we need to fill three more games (or one more single page game and a double page game like 18xx or SILVERTON). CIRCUS MAXIMUS, AIR BARON, and (perhaps) BLACKBEARD would qualify for the former.

I recently had a chance to play TWILIGHT IMPERIUM 3rd Edition (TI3). It's sort of a combination of COSMIC ENCOUNTER, STELLAR CONQUEST, PUERTO RICO, AXIS & ALLIES, SETTLERS OF CATAN and who knows what else. It's pricey at about \$70. It would be pbem-able. If there's enough interest, I might pick up a copy this summer at WBC.

**THOUGHT FOR THE MONTH:** "My own experience has taught me this: if you wait for the perfect moment when all is safe and assured it may never arrive. -- Maurice Chevalier

#### BORIS'S BULLETIN BOARD

Zine Register #30 is out. Contact Tim Snyder, 12001 Dessau Rd, #825, Austin TX 78754 or [tsnyder@opti.mcombs.utexas.edu](mailto:tsnyder@opti.mcombs.utexas.edu) for details on how to get your own copy.

#### BOOS & KUDOS

The Madame Bolduc Press Excellence Award (and free issue) goes this month to "Milan" in Gunboat. She agrees wholeheartedly.

This month's Ms Nar Super-Sudsy Bomb is lobbed at John Butitta for delay of games.

**PERSONAL COMMUNICATION HERE (maybe):**

Deadline for most games is 1800 CST 1 Apr 05



## ITALIANS SMASHED! Spring 1908

XVII  
2003F

**MINAS MORGUL:** A full 25% of Italy's forces in the field were destroyed by an almost casual French maneuver. With the stab season before us, this can do nothing to enhance Austrian confidence in Italian competence and GRE is very, very empty. On the other side of the stalemate line, HOL is ripe for the taking. Meanwhile the Austrian army in FIN is tying down four German units; it will eventually succumb, allowing Austria to temporarily retake STP.

### TROOP MOVEMENTS

Austrian A STP retreats to FIN. French A MAR retreats to GAS. Italian F WES retreats to TYN. France disbands A LON. Italy builds F ROM.

**AUS:** (Rick Copeland) A Pru S A War-Lvn, A Rum-Gal, F Aeg-Ion, A Gal-War, [A Fin-Swe], A War-Lvn, [A Mos-StP], A Sil S A Pru, [A Trl-Mun], A Boh S A Sil;  
**FRA:** (Kevin Wilson) A Bur S A Gas-Mar, F Wes-Lyo, [F Mid-NAF], A Ruh S GERA Mun, F Por H, F Spa(sc) S F Wes-Lyo, A Gas-Mar;  
**GER:** (Rudy Zodda) A StP H, A Nwy-Swe, F Bal S A Ber, A Ber S A Mun, A Kie S A Mun, F Bar S A StP, A Mun H, F Den S A Nwy-Swe;  
**ITA:** (Ron Fisher) A Ven-Pie, [A Mar H](d), F Tyn S F Tun-Wes, F Ion-Tun, [F Lyo S F Tun-Wes](d), [F NAF-Mid], F Tun-Wes, F Rom-Tus.

Orders in brackets fail; d = destroyed, otb = off the board, nso = not so ordered, r-??? = must retreat somewhere. Full transcript of game and the latest Map are on the Website.

Orders for Fall 1908 are due next time. How about some Press?

**PRESS:** None.



**BRITANNIA**  
"Devon"  
Green Speaks

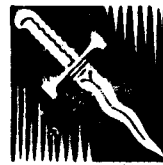
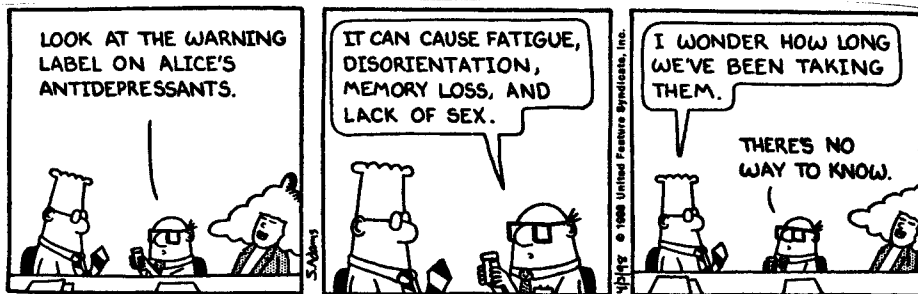


### The Cast:

Blue: Kevin Wilson  
Purple: Rudy Zodda

Green: Rick Copeland  
Red: Peter Boyum

**COPELAND:** Thank you, my friends, for an enjoyable game. I consider my victory a function of luck. Peter, you would have won AGAIN if Kevin's Angles had not joined me and almost obliterated your nasty Saxons. Thanks, Kevin, for your support. Please forgive my heinous betrayal of our truce. Seeing that victory was within reach, I was compelled to grab some of your land to boost my point totals. Sorry about that. But hey, that is what King Canute would have done. I'll happily play you all in a rematch so you can get your proper revenge.



## MACHIAVELLI France Bribes! Fall 1519

2003 D  
pw10

**Ragnocittd:** The remaining powers are still relatively even in the race for victory. The Turks maintain the lead but are perilously close to losing all their home centers. The Pope has regained the Holy See. France remains a contender as will Austria after her fleets regroup.

### TROOP MOVEMENTS:

Austrian A ANC retreats to AQU. Austrian F TS retreats to PAL. French A CARIN retreats to VER. Turkish A BOL retreats to FER. Turkish A CRE retreats to BER.

**AUSTRIA** (Wilson, 5d): F GoL-Sar, F Rag S F LA, F Otr-GoN, [F LA S A Her-Dal], [F Rome S F Pal-TS](r-???), F LS-Cor, A Aqu-Nap, F Pal-TS, A Spo S F Rome, [A Her-Dal];  
**FRANCE** (Scott, 14-12d): Bribe TUR A TRENT to disband (-12d). A Mil-Carin, A Cre-Mil, A Ver-Trent, F Gen-LS, [A Tyr S A Mil-Carin](r-???), A Mod S A For-Par, F Mar H, A For-Pav.  
**PAPACY** (Anderson, 3d): F TS-Rome, A Pat S F TS-Rom, [F Ven-UA], A Flo-Pis, A Bol-Flo, F Pio-Pisa, A Per S F TS-Rome, G Bol = A;  
**TURKS** (McConnell, 0d): [A Trent-Mil](nsu), [A Fer-Man], [F Dal-Her], A Anc-Aqu, [F UA-LA], [A Ber S A Trent-Mil](nsu), A Cro-Bos, A Urb-Are, [A Man-Par], A Carin-Tyr, A Aus S A Carin-Tyr.

Orders in brackets fail. b = besieged, d = destroyed, imp = impossible, no = not owned, nso = not so ordered, nsu = no such unit, otb = off the board, otm = on the move, R = Rebellion, r-??? = must retreat otb or elsewhere, u = unordered.

Austrian F ROME must retreat otb or to CAP. French A TYR must retreat otb or to Como, Swi, Tur or garrison.

**Supply Chart:** Variable income roll is "2".

**AUS** (5+36\*d): BARI MES PAL SAR 1st -Tur? Cor tun otr Dur NAP sal Alb Anc -pat -Rome +cap? +her +Rag +spo;  
**FRA** (2+34\*d): AVI pro SALZ Gen Pav Swi como for MAR Mil Sav -ber -Man -Aus par -Tyr? +carin +Mod +Trent +Tur?;  
**PAP** (3+30\*d): BOL PER -spo -Are Flo -aqu -cap? Pisa Ven Luc Pio Sie +pat +pis +ROME;  
**TUR** (0+35\*d): bos -her HUN TUN(c) car Cro Dal -Rag -carin fri Tre -Trent Pad ver Cre Fer -Mod sla urb +aqu +Are +Aus +ber +Man +Tyr?.

\* If AUS F Rome r-Cap: AUS +1d, PAP -1d  
+ If FRE A Tyr r-g: FRA +1d, TUR -1d  
If FRE A Tyr r-Tur: FRA +2d, AUS -2d

Orders for Spring 1520 are due next time. And Press. Ms Nar demands Press.

### EMBASSY BEAT

**FRANCE:** Come on Mr wonderful Turk, back off a bit so we can get this game over.

**Cholas** (0.5): 1A @ Mysore.  
**Mauriyas** (x): 2A @ Baluchistan; 1A @ Agra, Bengal, Bihar, Bundelkhand, Delhi, Gandhara, Gujarat, Jaunpur, Kashmir, Khandesh, Lahore, Ladakh, Magadha, Malwa, Orissa, Oudh, Punjab Rajputana.  
**Sinhalese**: 1A @ Karnatak, Lanka, Sinhala.  
**Rajputs**: 6A @ C Asia; 4A @ China.

Ashoka, 1A @ Ladakh, Khandesh, Sind, Baluchistan, Gujarat and Bengal go bye-bye.

**Pandya** (1.5): Grow 1 pp. 1A Kerala-Malabar.

**Greeks** (0): ...

Game transcript and map are posted on the website.



## Gunboat MACHADOZZZZ

### Venice Bribes!

### Summer 1455

2004A  
pw1Q

**ERRATA:** France loaned Florence the 3d necessary for the bribe.

#### TROOP MOVEMENTS:

Florentine A ARE retreats to garrison. French A PAV retreats to FOR. Venetian A AUS retreats to CARIN.

**AUSTRIA** (0d): A Trent-Mil, A Aus-Carin, [A Hun-Sla], A Tyr S A Aus-Carin;

**FLORENCE** (0d): [A Per S G Are = A], A Sic -Pat, F Pisa-Pio, [G Are = A];

**FRANCE** (0d): A Sav-Mon, [A For S A Sav-Mon](d), [F Sar-TS], [A Tur S A Sav-Mon](r-??), F GoL-LS;

**MILAN** (6d): A Mod S A Par-For, A Como-Tur, A Gen S A Par-For, A Pav S A Como-Tur, A Par-For;

**NAPLES** (0d): F Aqu S A Bari-LA, F Otr S F Mes-IS, [F TS S G Pal = F], F Bari-LA, F GoN S F TS, F Mes-IS, [G Pal = F];

**PAPACY** (2d): A Pio S A Are B1, A Are B1, [F Urb-Bol], [A Bol-Pis](nsu), [A Rom-Per], [G Anc = F];

**TURKS** (4d): G Rag = F, [F IS S F CM-Pal](r-??), [F CM-Pal], [F LA-Anc](r-??), F Tun-WM;

**VENICE** (13-12d): Bribes PAP A BOL to disband (-12d). A Carin-Trent, [A Car-Sla], F Ist H, F UA S A Fer-Bol, A Fer-Bol, A Ver S A Carin-Trent, F Ven S F UA;

**AUTONOMOUS:** Fer, Man, Mod, Mon, Luc, Pio, Salz, Sav, Sic, Tur

Orders in brackets fail. b = besieged, C = convoy or C, d = destroyed, imp = impossible, no = not owned, nso = not so ordered, nsu = no such unit, oth = off the board, otm = on the move, r-?? = must retreat oth or elsewhere, u = unorderd.

French A TUR must retreat oth or to AVI, PRO, SALZ, SAV, SWI or garrison. Turkish F IS must retreat oth or to DUR. Turkish F LA must retreat oth or to ALB, DAL or HER.

Orders for Fall 1455 are due next time. And Press. Ms Nar craves Press. Game transcript and map are on the website.

#### EMBASSY BEAT

Milan: Am I the only one who writes Press? People, this is a Gunboat game. I would think we all need to do our communication here.. What say?



## TITAN

### Two Speak!



**FRUEH:** Of all games to GM - simultaneous Titan has to be one of the most challenging in terms of figuring out what is what. My hearty appreciation and admiration to Paul and Mrs. Nar for their undertaking and successful completion of the challenge. You were simply great!

As for Titan - luck and good fortune is the cornerstone of the game - the right time, the right place and the right "roll"s are key....I had them - I freely admit. The game was fun and Andrew York played a great game. For those who love Titan - may I recommend semi-live pbem games at [acts.warhorsesaim.com](http://acts.warhorsesaim.com).

**YORK:** Thanks for a good game Mark and an excellent GMing job Paul (this was a bugger, wasn't it!).

**GM:** Actually, it was easier than most. The key was to keep track of all the legion compositions and this was easily done by dedicating a 3x5 card to each legion and adding and deleting creatures as they were mustered, killed, or split off. Most of the grief was getting battles moving.



## JUNTA

### JUAN ASSASSINATED!

Year 2-3



#### THE CAST: (and Table order)

Rick Copeland (Martini)  
Chuck Hanna (Shades)  
Wayne Morrison (Mustache)

Dave Anderson (Hat)  
John Buttitta (Stickpin)

**STATUS:** The Bank is open and not safe. There is no Coup excuse.

**Martini:** *El Presidente* (1v), Bankers (7v), Peasants (3v), 4C, 0\$

**Hat:** Air Force CO, Admiral (2v), Conservatives (8v), Radicals (3v), 4C, 2\$

**Shades:** 2nd Brd CO (1v), Labor Union (5v), 2C, 0\$

**Stickpin:** 3rd Brd CO (1v), 6C, 3\$

**Mustache:** Minister, 1st Brd CO (2v), The Church (10v), 5C, 1\$

#### TURN 2

**2.4 Locations:** Martini is at the Nightclub. Hat, Mustache, Shades and Stickpin are at the Bank.

**2.5 Assassinations:** The Ministerial Assassin awaits Carlos at home so misses. Mustache plays bribe card and pays 1 MP to assassinate Juan at the Bank and succeeds! 5\$ = \_ MB to Mustache. Stickpin loses 6 cards. *El Presidente's* brother-in-law is temporarily in command of 3rd Brigade.

**2.6 Banking:** Mustache deposits \_\$. Shades deposits \_\$. Hat plays "Secret Political Donation", receives 1\$ (\_ MP), and deposits \_\$.y.

#### 2.7 Coup: None

**STATUS:** The Bank is not safe.

**Martini:** *El Presidente* (1v), 3rd Brd CO (1v), Bankers (7v), Peasants (3v), 4C

**Hat:** Air Force CO, Admiral (2v), Conservatives (8v), Radicals (3v), 3C

**Shades:** 2nd Brd CO (1v), Labor Union (5v), 2C

**Stickpin:** DEAD

**Mustache:** Minister, 1st Brd CO (2v), The Church (10v), 4C

#### PRESS:

Juan's family cries out for justice. Is there no one who can stop the violence? Our country can be saved only by new leadership even if it takes force to bring it about.

#### TURN 3

**3.1 Card Draw:** Stickpin revives. All draw 2 cards. Martini plays "Socialists" and discards "Christian Defense Militia" and "Helicopter Gunship". Hat donates \_\_\_\_\_ to Stickpin. Mustache discards \_\_\_\_\_.

**3.2 Cabinet:** *El Presidente* gives 3rd Brigade back to Stickpin. No other change.

**3.3 Budget:** *El Presidente* draws \_ \_ \_ \_ \_

**STATUS:** The Bank is not safe.

**Martini:** *El Presidente* (1v), Bankers (7v), Peasants (3v), Socialists (5v), 3C

**Hat:** Air Force CO, Admiral (2v), Conservatives (8v), Radicals (3v), 5C

**Shades:** 2nd Brd CO (1v), Labor Union (5v), 4C

**Stickpin:** 3rd Brd CO (1v), 2C

**Mustache:** Minister, 1st Brd CO (2v), The Church (10v), 6C

Due next: *El Presidente* announces the budget, the Budget vote, location, and assassinations.

You have \_ MP in hand and \_ MP in the Bank.



## MAHARAJA

Turns 3-5  
Mauryans Score Big!



**THE CAST:**  
Rudy Zodda: Green  
Paul Barrett: Yellow

Dave Anderson: Purple  
Wayne Morrison: Blue

### Turn 3

#### BOARD:

**Pandya** (2.5): 1A @ Bidar, Maharashtra.  
**Cholas** (2.5): 1A @ Golconda, Andhra.  
**Mauryans** (0.5): 4A @ C Asia; 2A @ Gujarat, Lahore; 1A @ Bengal, Bihar, Delhi, Gandhara, Kashmir, Khandesh, Magadha, Malwa, Punjab, Rajputana.

**Cholas** (2.5): Grow 0.5. Add 1A @ Andhra. 2A Andhra-Golconda (6,2:3,2 -1 Pandya, 1 Pandya r-Mysore)

**Mauryans** (0.5): Grow 11.5 pp. Add 1A @ A @ Bihar, Bengal, Malwa and Magadha. 3A @ C Asia-Gandhara, 1A @ C Asia-Kashmir-Punjab, 1A @ Gujarat-Sind-Baluchistan, 1A @ Gujarat-Sind, 1A @ Lahore-Delhi, 1A Bengal-Orissa, 1A Bihar-Jaunpur, 1A Delhi-Rajputana, 1A Khandesh-Malwa, 1A Magadha-Bundelkhand, 1A Malwa-Oudh, 1A Malwa-Agra, 1A Rajputana-Gujarat. Score 2 Maharaja VP.

**Score:** Blue 10, Yellow 3, Green 0, Purple 0.

### Turn 4

#### BOARD:

**Pandya** (0.5): 1A @ Bijapur, Mysore.  
**Greeks:** Alexander, 6A @ Afghanistan.  
**Cholas** (0): 2A @ Golconda.  
**Mauryans** (0.5): 4A @ Gandhara; 2A @ Punjab; 1A @ Agra, Baluchistan, Bengal, Bihar, Bundelkhand, Delhi, Gandhara, Gujarat, Jaunpur, Kashmir, Khandesh, Lahore, Magadha, Malwa, Orissa, Oudh, Rajputana, Sind. Ashoka @ ?..  
**Sinhalese:** (3A @ Lanka).

**Pandya** (0.5): Grow 1 pp. 1A Bijapur-Mysore; 1A Mysore-Kerala.

**Greeks:** 2A Afghanistan-Baluchistan (5,1:6 -1 each), 2A Afghanistan-Baluchistan-Sind (5,2:3 -1 Mauryan), 2A Alex Afghanistan-Punjab (5+1,1+1:6,4 -1 each, Mauryan r-Gandhara). Greeks score 3 VP. Alex and 1A @ Punjab & Baluchistan withdraw offboard.

**Cholas** (0): Grow 0.5 pp. 2A Golconda-Mysore (6,6:5 -1 each).

**Mauryans** (0.5): Grow 16 pp. Add 1A @ Delhi, Kashmir, Lahore, Malwa, Rajputana and Ashoka @ Gandhara. 4A.L @ Gandhara-Sind (5+1,4+1,3,2:6,6 -2 each), 1A Delhi-Baluchistan, 1A Kashmir-Ladakh, 1A Lahore-Baluchistan, 1A Malwa-Khandesh, 1A Rajputana-Punjab. Score 2 Maharaja VP.

**Sinhalese:** 3A appear @ Lanka. 1A Lanka-Sinhala, 1A Lanka-Karnatak.

#### TURN 4 VP:

Yellow: Mauryans (23), Sinhalese (3)	26
Green: Pandya (1), Greeks (0)	1
Purple: Cholas (3)	3

**Score:** Yellow 31, Blue 10, Green 4, Purple 3.

### Turn 5

#### BOARD:

**Pandya** (1.5): 1A @ Kerala.  
**Greeks:** 3A @ Persia  
--MAHARAJA (continued from p 6)  
**Marathas:** (6A @ Maharashtra)

---continued on p 3



## BRITANNIA

### "Frisian"

Turn VII



**The Cast:** Nations in Italics are extinct, in parentheses are not yet in play.  
A (Hanna): *Romans*, R-Bs, (Norsemen, Norwegians)  
B (Anderson): Welsh, Jutes, (Normans)  
C (Buttita): Brigantes, Caledonians, (Danes)  
D (Boym): Picts, Irish, Angles  
E (Frueh): *Belgae*, Scots, Saxons, (Dubliners)

### TURN VII (Continued)

#### BOARD:

**R-Bs** (A, 2): Artie, 1C, 1A @ Hwicce; 2A @ N Mercia; 1A @ Lindsey, Pennines.  
**Welsh** (B, 1): 3A @ Devon; 2A @ Powys; 1A @ Clwyd, Cornwall, Dyfed, Gwent.  
**Brigantes** (C, 2): 2A @ Lothian; 1A.L @ York; 1A @ Bernicia, Cumbria, Dalriada, Galloway, Strathclyde.  
**Picts** (D, 1): 3A @ Alban; 2A @ Skye; 1A @ Mar, Moray.  
**Caledonians** (C, 1): 2A @ Caithness; 1A @ Hebrides.  
**Irish** (D, 0): 2A @ Chester, Gwynedd; 1A @ Downlands.  
**Scots** (E, 0): 3A.Fergus @ Irish; 1A @ Orkneys.  
**Jutes** (B, 0): 3R @ Channel.  
**Saxons** (E, 2): 4A @ Frisian; Hengist, 3A @ Essex; 2A @ Suffolk; 1A @ Kent, S Mercia, Sussex, Wessex.  
**Angles** (D, 0): 8A @ North; 3R @ Frisian; 3A @ Dunedin.

**Scots** (0): 1st Wave: 3A, "Fearless" Fergus Irish-Dalriada (5+1,4+1,1+1:5 -1 each). 2nd Wave: Hold.

**Jutes** (B, 0): 2A, 1R Channel-Sussex (6,2,1:4 -Saxon, R w-Channel).

**Saxons** (2): Grow 5 pp. Hengist dies. Add 1A @ Wessex & S Mercia. 1A Wessex-Avalon, 2A S Mercia-Hwicce, 3A Essex-S Mercia-Hwicce (2,3,2,5,3:1+1,2+1; 6,6,5,3,3:5+1,2+1 -1 Saxon, -Artie, C.A), 1A Suffolk-Norfolk, 1A Suffolk-S Mercia, 3A Frisian-Essex, 1A Frisian-Suffolk. Score 5 E VP.

**Angles** (0): Grow 1 pp. 1st Wave: 2A @ Dunedin-Strathclyde (4,3:4 Brig r-Galloway), 3R Frisian-York, 2A @ North-York (6,5,4,3,2:6+1 -1 Angle, -1 Brig.L), 3A @ North-Bernicia (5,4,1:1 -1 Brig), 1A @ North-Frisian-Norfolk (6:3 -1 Saxon), 2A @ North-Bernicia-Pennines (6,4:4 -1 RB). 2nd Wave:

**SCORE:** A(42), C(23), E(21.5), D(17), B(12)

#### BOARD:

**R-Bs** (A, 2): 2A @ N Mercia; 1A @ Lindsey.  
**Welsh** (B, 1): 3A @ Devon; 2A @ Powys; 1A @ Clwyd, Cornwall, Dyfed, Gwent.  
**Brigantes** (C, 2): 2A @ Galloway, Lothian; 1A @ Cumbria.  
**Picts** (D, 1): 3A @ Alban; 2A @ Skye; 1A @ Mar, Moray.  
**Caledonians** (C, 1): 2A @ Caithness; 1A @ Hebrides.  
**Irish** (D, 0): 2A @ Chester, Gwynedd; 1A @ Downlands.  
**Scots** (E, 0): 2A.Fergus @ Dalriada; 1A @ Orkneys.  
**Jutes** (B, 0): 2A @ Sussex, 1R @ Channel.  
**Saxons** (E, 2): 4A @ Hwicce; 3A @ Essex; 1A @ Avalon, Kent, S Mercia, Suffolk, Wessex.  
**Angles** (D, 0): 2A/3R-1 @ York; 3A @ Bernicia; 2A @ Pennines, Strathclyde; 1A @ Dunedin, Norfolk.

**Legend:** A = infantry army, C = cavalry army, F = fort, L = legion or leader, pp = population point, R = raider, r-??? = retreats to ???, w-??? = withdraws to ???, (\*) = in melee, \_#\_ = attack by/against cav/legion

Current map and transcript can be found on the website.



## FRUEH IS MISSING

SR 5 Ends, OR 5a & 5b

FIM

### PLAYER STATUS

Bailey: \$2, 3 C&O, 3 B&O\*, 1 PA  
Hanna: \$13, 6 NYNH&H\*, 5 NYC\*  
Boulduc: \$26, 5 CP\*, 2 NYNH&H, 2 PA, 1 B&O  
Copeland: \$30, 5 C&O\*, 5 PA\*  
Zieske: \$57, 6 B&M\*, 1 CP, 1 B&O, 1 C&O

### CORPORATE STATUS

Corp	Pres	Price	Par	IO	Pool	Cash	Trains	Tokens
NYNH&H	CH	F75	90	2	0	322	4	G19, F22
PA	RC	E71	100	3	0	224	45	H12, H10, 2
CP	PB	H68	--	0	4	602	3	A19, B16, 2
B&M	PZ	F67	100	1	3	30	45	E23, F22
NYC	CH	H67	76	3	2	760	--	(E19), 2
B&O	CB	J50y	100	2	3	0	34	I15, 2
C&O	RC	J40c	--	0	1	0	33	F6, 2

### SR5 (continued)

All pass. Nothing is sold out. Bailey has the Priority.

### OR 5a

NYNH&H: Play #7 in F18(se). Run E23-F22-F20-F19 (\$160). Retain earnings. Price falls to F71. Buy 5-train. (\$322+160-450 = \$32)

PA: Play #57 in H16(w). Run H10-H12-H16 & H10-G7-F6 (\$110). Pay dividends (CB +\$11, PB +\$22, RC +\$55). Price to E76.

CP: Play #8 in B12(nw). Run A11-B16-A19 (\$120). Pay dividends (PB +\$60, CP +\$48, PZ +\$12). Price climbs to G69. Buy 6-train (-\$630) -- all 3-trains are scrapped.

B&M: Play #62 in G19. Run G19-F20-F22-E23 & F22-F24-E23 (\$280). Pay dividends (PZ +\$168, B&M +\$84). Price to F71b.

NYC: Play #57 in E19(sw). Place token in E19. No train, no run, share price falls to H60y. Buy 6-train for \$630.

B&O: Play #15 in H16 (e). Run K13-J14-I15-(I17)-H16 (\$40+\$20+\$30+\$30 = \$120). Pay dividends (CB +\$36, PB +\$12, PZ +\$12; corporate +\$60). Price to I60.

C&O: Play #14 in hex H10(w). No train, no run. Share price falls to K30r. President Copeland is forced to dig into his own pocket to purchase a train for the financially pirated C&O. C&O pays \$1 to PA to purchase a 4 train.

### OR 5b

PA: Play #59 in hex H18(w). Run 5 train H18-H16-H10-G7-F6. Payoff \$140. Pay dividends. (+\$14 to CB. +\$28 to PB. +\$70 to RC). Stock moves to E82.

NYNH&H: Play #2 in G17(se). Run E23-F24-F22-F20-G19 (\$190) & G19-G17-G19 (\$170). Pay (CH+\$216, PB+\$72). Price rises to F75.

B&M: Run E23-F24-F22 (\$100) & F22-F20-G19-G17-G19 (\$210). Pay \$31/share dividends (PZ+\$186, B&M+\$93). Prices goes to F75b

CP: Play #25 in B12(e). Run A11-B16-A19-B20-B24 (\$160). Pay dividends (PB +\$80, CP +\$64, PZ +\$16). Price moves to G70.

B&O: Play #67 in H18 (ne). Run G19-H18-H16-I15 (\$200). Pay dividends (CB +\$60, PB +\$20, PZ+\$20, B&O +\$60). Price moves to H67.

### PLAYER STATUS:

Bailey: \$123, 3 C&O, 3 B&O\*, 1 PA <priority>  
Hanna: \$229, 6 NYNH&H\*, 5 NYC\*  
Boulduc: \$320, 5 CP\*, 2 NYNH&H, 2 PA, 1 B&O  
Copeland: \$154, 5 C&O\*, 5 PR\*  
Zieske: \$471, 6 B&M\*, 1 CP, 1 B&O, 1 C&O

### CORPORATE STATUS

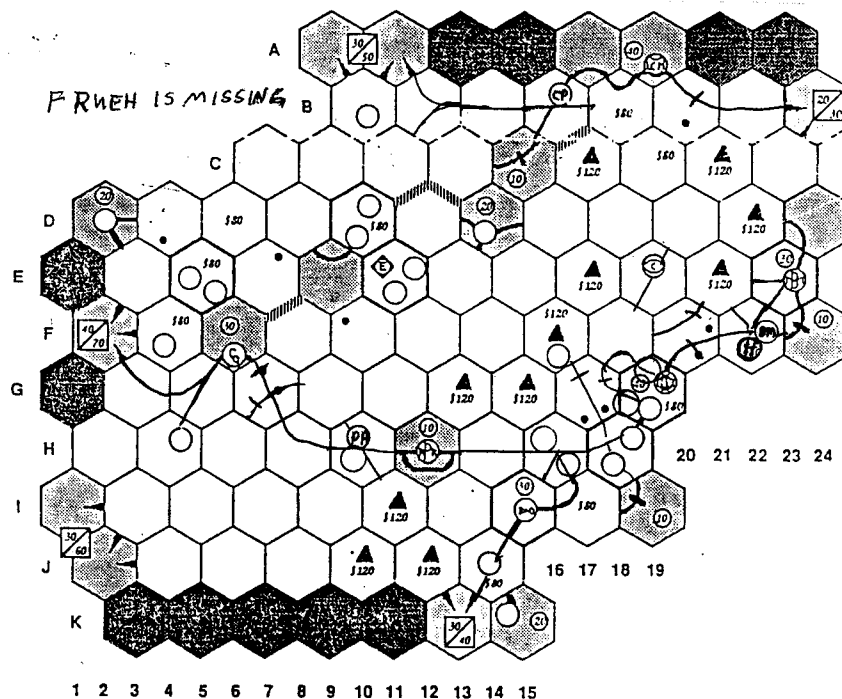
Corp	Pres	Price	Par	IO	Pool	Cash	Trains	Tokens
PA	RC	E82	100	3	0	225	5	H12, H10, 2
NYNH&H	CH	F75a	90	2	0	32	45	G19, F22
B&M	PZ	F75b	100	1	3	207	45	E23, F22
CP	PB	G70	71 0	4	84	6	4	A19, B16, 2
B&O	CB	H67	100	2	3	96	4	I15, 2
NYC	CH	H60y	76 3	2	130	6	4	E19, 3
C&O	RC	K30r	--	0	1	0	4	F6, 2

Bank has \$9,929.

### AVAILABLE TRAINS: DDDDDD...

### AVAILABLE TILES:

Yellow: 3(2), 4(2), 7(1), 8(4), 9(5), 55(1), 56(1), 57(0), 58(1)  
Green: 14(1), 15(1), 16(1), 18(1), 19(1), 20(1), 23(2), 24(3), 25(0), 26(1), 27(1), 28(1), 29(1), 53(1), 59(2)  
Brown: 39(1), 40(1), 41(2), 42(2), 43(2), 44(1), 45(2), 46(2), 47(1), 61(1), 63(3), 64(1), 65(1), 66(1), 68(1), 70(1)

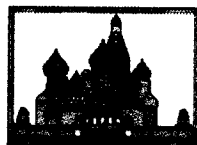




## KREMLIN

### Aparatschik Shuffles Politburo!

#### Turns 3.6-Interphase



#### CAST:

Paul Bartlett: Bolsheviks Against Russian Treason (BART), 1 card  
Mike Scott: The California Connection (TCC), 0 cards  
Dave Anderson: Decaying Licentious Antequarians (DLA), 2 cards  
Rudy Zodda: Red Zealots (RZ), 1 card  
John Butitta: Proletariat Worker's against Imperialism (PWI), 3 cards  
Cary Nichols: Re-Education Development Society (REDS), 3 cards

#### POLITBURO:

Party Chief:	Aparatschik (A)	84?+	TCC(3)
KGB Head:	Doberman (L)	69?++	RZ(8), BART(8), PWI(5)
Foreign Minister:	Krakemheds (E)	75w?+	PWI(3)
Defense Minister:	Manjak (P)	76	BART(1)
Ideology Chief:	Satin (O)	63s?C	REDS(4)
Industry Minister:	Schukrutoff (B)	75?+	
Economy Minister:	Patina (S)	60?	REDS(1)
Sport Minister:	Talksalott (J)	68?C	TCC(1)
Candidates: D, GMV			People: IKN(DLA 2)RUWY(REDS 1)Z(DLA 1)
The Wall: HTX			Siberia: CF

#### TURN 3 (Continued)

**3.6 REPLACEMENT PHASE:** Party Chief Aparatschik "A" tries to shift "J" to Ideology, but REDS plays Card #28 "Downing of Airliner" to prevent "O" from leaving the Ideology slot. "A" then shifts "J" to Industry, and "B" to Sports, then demotes "D" to People, "S" to Candidates, & "L" to Industry, then promotes "J" to KGB, "M" to Economy, and "K" & "N" to Candidates, aging 7 SP to 91.

**3.7 REHABILITATION PHASE:** No action.

#### 3.8 PARADE PHASE:

Party Chief Aparatschik waves (9), aging 1 SP to 92. TCC has 1 wave.

**1st INTERPHASE:** DLA places 1 IP on "O" and "F". RZ takes 2 cards. PWI places 2 IP on "J". REDS adds 1 IP to "O" and "S". BART adds 2 IP to "L". TCC takes 2 cards.

**Due next time:** Orders for Turn 4 Cure to Health phase. Note that Aparatschik must take the Cure to avoid retirement (95).

#### POLITBURO:

Party Chief:	Aparatschik (A)	92?+	TCC(3)
KGB Head:	Talksalott (J)	68?C	PWI(2), TCC(1)
Foreign Minister:	Krakemheds (E)	75w?+	PWI(3)
Defense Minister:	Manjak (P)	76	BART(1)
Ideology Chief:	Satin (O)	63s?C	REDS(5), DLA(1)
Industry Minister:	Doberman (L)	69?++	BART(10), RZ(8), PWI(5)
Economy Minister:	Eatstumuch (M)	64	
Sport Minister:	Schukrutoff (B)	75?+	
Candidates: GKNS(60?), REDS 2/V			People: DI(DLA 2)RUWY(REDS 1)Z(DLA 1)
The Wall: HTX			Siberia: CFI(DLA 2)

**LEGEND:** s = strong, w = weak, + = sick, ++ = ill, C = Cure, ? = under investigation, \_ = position is vacant

## AoR

## THE INNOICES TALE

New World!

Turns 8.3-8.6 & 9.1-9.2



**ERRATA:** G has tie break precedence so goes 2nd.

#### The Cast (in Tiebreak Order)

GENOA (Copeland): \$115, 16C, 4K, 250M, SV-10  
PARIS (Frueh): \$53, 5C, 3K, 200M, SV-10  
BARCELONA (Butitta): \$196, 17C, 4K, 350M, ON-2  
VENICE (Hanna): \$28, 7C, 2K, 200M, ON-2

#### Advances

A.E.F.H.I.N.R.S.V.W  
A.B.E.F.I.-K.N.O.R.S.V.W  
A.F.H.I.N.R.T.V.X  
A.E.F.I.N.R.T.V

V & P use 2t & 1t respectively from bids to cover Plague losses. Leaders: Columbus (1st, P), Erasmus (V, \$5), Caxton (V, \$5). Papal Decree bans Religion advances. G has Longbow.

#### 8.4: PURCHASE PHASE:

P (27-1) buys "Ocean Navigation" (T: \$40, 80 cr, 5 MR), Stabilization (\$6).  
G (30t) rents Caxton and Erasmus from V (\$10), buys Stabilization (\$10), "Institutional Research" (K: \$70, 30 cr, 10 MR), "Printed Word" (O: \$0, 80cr, 10 MR), "Wind/Watermill" (J: \$20, 20 cr, 5 MR).  
B (30t) buys ship upgrade (\$10), "New World" (U: \$90, 70 cr, 25 MR), "Printed Word" (O: \$40, 20 cr, 10 MR), "Human Body" (B: \$30, 30 cr, -1 ML, 10 MR), Stabilization (\$10). 45 MR + 85 buys -1 ML to 250 M.  
V (33t) buy "Printed Word" (O: \$0, 70 cr), "Wind/Watermill" (J: \$30, 10 cr, 5 MR), Stabilization (\$3).

#### 8.5: EXPANSION PHASE:

P (27-1) buy a card (3t), play 2t+1T = c) @ Dj, 2t+1T = c) @ Basl, 2t+1T = c) @ Str, 3t+1T = c) @ Bru, 3t+1T = c) @ Col, 2t+1T = c) @ Nur, 1t+1T = c) @ Pra, 2t (G.B.W = 6,2:1 = c, -VT) @ StM, 5t5,2:3 = c -GC) @ Sab, 1t @ Vie.  
G (30t) play 5t = c w/H -VC) @ Cyp, 6t = c w/H -Pc) @ Str, 5t4,4:1 = c -BC) @ Lis, 1t5,6:5 -BT) @ Pal, 8t5,6:2 = c -BC) @ BAR, 4t5,4:3 = c -BC) @ Val, burn 1t.  
B (30t) play 6t = c) @ NAM, 7t1,2:1 = c -GC) @ Cre, 12t5,5:5; 6,3:5 = c -GC) @ Bel, 4t1,1:4; 4,3:6 = no) @ Lev, eat 1t.  
V (33-2t) play 2t+1T = c) @ Bud, 7t1,6:2 = c -Pc) @ Bru, 16t3,1:2; 1,3:4 = no) @ Flo, 4t5,1:5 = no) @ Sab, eat 1t.  
P gets the expansion bonus card with 7c.

#### 8.6: INCOME PHASE:

G (18C) earns \$87. B (17C) earns \$83. P (12C) earns \$63. V (8C) earns \$47. There is a surplus of Cloth (5,1+5) and a shortage of Silk (2,6+4). V pays \$3; P gets a card. B loses 1 ML due to "U".

**9.1 & 9.2: CARD DRAW & CARD BUY PHASES:** All draw 1 card; G,P,&V buy another (\$10).

#### The Cast (in Turn 8 Order)

PARIS (Frueh): \$60, 12C, 7K, 200M, ON-1  
GENOA (Copeland): \$82, 18C, 6K, 250M, SV-10  
BARCELONA (Butitta): \$94, 17C, 5K, 200M, ON-3  
VENICE (Hanna): \$39, 8C, 4K, 200M, ON-2

#### Advances

A.B.E.F.I.-K.N.O.R.T.V.W  
A.E.F.H.-J.N.O.R.S.V-X  
A.B.F.H.I.N.O.R-V-X  
A.E.F.I.J.O.N.R-T,V

#### THE BOARD:

B: C @ Alex Alg Ang, Basq Bel Cai Chi Cre Ein Nam Sar Sev Sue Tan Tol Tre Waf, 1T @ Con Kam Ora.  
G: C @ BAR Bor Cyp Fez GEN Gra Lis Lyo Mar Nap Pot Rom Sic Str Tri Tun Val Var, 1T @ Pal.  
P: C @ Acr Alep Basl Col Dj Erz Flo Mil Nur Pra Salo StM, 1T @ Jer Lev Tar Vie  
V: C @ Bru Bud Dub Ind Kie Mon Smy VEN, 1T @ Gal Kaf Vie.

#### Press:

Mark to Chuck - Use of the "Black Death" card should be used in order to improve your situation or cause great harm to the player involved ... your action doesn't appear to help your position or cause me great harm ... thanks for the expansion card bonus.

Mark to Rick - Breaking deals with me is not a good thing .... I trust you know what this means for our two City States.....nothing worse than a rapid Puppy on the loose.

Mark to John - I think you're going to win this game, keep up the good work!

Due next time are orders for Token Bid and Card Play phases. Your cards are:



# PUERTO RICO

Turn 4



# SoC

Slow Going Still!

Turns 7.1-7.3

# Ernst

The Cast: R Fisher (F) P Ziecke (Z) M Scott (S) K Wilson (W) R Copeland (C)

## Turn 7:

7.1 (F): Roll 7. S discards 4 cards (g,3l). F moves Robber to f5 and steals lumber from W. No action.

7.2 (Z): Roll 4. W collects 2 ore from b4. F collects 1 ore from e2. Z collects 2 grain and C 1 grain from g3. Z trades one ore to C for one brick. Z gives an ore to F for a lumber. SSP: C upgrades settlement at d3/d4/e4 to City (-2g,3o, +1 VP).

7.3 (S): Roll 4. W collects 2 ore from b4. F collects 1 ore from e2. Z collects 2 grain and C 1 grain from g3. ...

## COMMODITY STATUS

Player	brick	grain	lumber	ore	sheep	Knights	cards	VP	Other
F	0	1	1	4	0	1	1	4	
Z	1	5	1	0	0	0	0	4	
S	1	1	1	0	0	0	0	4	
W	0	1	1	6	0	0	0	4	
C	0	1	0	0	1	0	0	3	

Development: Robber @ f5.

F: Settlements: e3/e4/f3, b3/c3/c4, a2/b2/b3, e2/f2/e3

Roads: b3/c3, e3/e4, b2/b3, e3/f3, b3/c4, b3/b4

Z: Cities: d2/d3/e3, g3/h2/h3

Roads: d2/d3, g3/h2, c2/d3

S: Settlements: d6/e6/e7, e4/e5/f4, e5/e6/f5, f4/f5/g4

Roads: e6/e7, e5/f4, e5/f5, f4/f5

W: Cities: f5/f6/g5, b4/c4/c5

Roads: c4/c5, f5/f6, e6/f5, e5/c6, f6/g5

C: City: d3/d4/e4

Settlement: f3/g2/g3

Roads: d3/d4, g2/g3, g2/h2, c3/d3

## STATUS:

Tom Butcher: Gov. Sm Sugar(x), Construction Hut(x). Corn(x), Sugar(x), Sugar(x), Quarry(\_). 2d, 1 VP

Brad Martin: Sm Warehouse(x), Tobacco St(\_). Corn(x), Tobacco(x), Tobacco(\_), Coffee(\_), 0d, 0 VP

Paul Barrett: Sm Market(\_), L Indigo(\_x), Sm Indigo(\_). Indigo(x), Quarry(x), Coffee(\_), Indigo(\_), 4d, 0 VP

John Butitta: Sm Market(x), Sm Indigo(x), Construction Hut(\_). Indigo(x), 2xCorn(\_), 4d, 3 VP

Ron Fisher: Hacienda(x), Hospice(x), Sm Indigo(\_). Indigo(x), Sugar(x), Quarry(x), Corn(x), Indigo(\_), 0d, 0 VP

Governor Butcher chooses Mayor, places 1 colonist on the Quarry and the other in San Juan. Martin places colonist on Tobacco St. Barrett places colonist on Sm Market. Butitta places colonist in Construction Hut. Fisher places colonist on Sm Indigo. Mayor restocks colony ship with 5 colonists.

Martin chooses Prospector (+3d).

Barrett chooses Builder and builds Coffee roaster (-4d). Butitta builds Hospice (-4d). Fisher builds not. Butcher builds Sm Warehouse (-2d). Martin builds not.

Butitta chooses Trader (+1d).

Fisher chooses Settler and takes Quarry, with colonist, and Indigo from the piles. Butcher chooses Quarry. Martin chooses Coffee. Barrett chooses Indigo. Butitta chooses Quarry. Two Corn and two Sugar are discarded. Fisher draws 6 new tiles.

## Turn 8

## STATUS:

Brad Martin: Gov. Sm Warehouse(x), Tobacco St(\_x). Corn(x), Tobacco(x), Tobacco(\_), 2xCoffee(\_), 3d, 0 VP

Paul Barrett: Sm Market(x), L Indigo(\_x), Sm Indigo(\_), C Roaster(\_). Indigo(x), Quarry(x), Coffee(\_), 2xIndigo(\_), 0d, 0 VP

John Butitta: Sm Market(x), Sm Indigo(x), Construction Hut(x), Hospice(\_). Indigo(x), 2xCorn(\_), Quarry(\_), 1d, 3 VP

Ron Fisher: Hacienda(x), Hospice(x), Sm Indigo(\_). Indigo(x), Sugar(x), 2xQuarry(x), Corn(x), 2xIndigo(\_), 0d, 0 VP

Tom Butcher: Sm Sugar(x), Construction Hut(x), Sm Warehouse(\_). Corn(x), Sugar(x), Sugar(x), Quarry(x), Quarry(\_). SJ(1), 0d, 1 VP

AVAILABLE BUILDINGS: All but Sm Market, Construction Hut, Sm Warehouse, Hospice.

AVAILABLE ROLES: Builder, Captain(1d), Craftsman(2d), Prospector(1d), Prospector, Settler, Trader.

AVAILABLE PLANTATIONS: 2xQuarry, 2xTobacco, 2xSugar, Coffee, Corn

COLONY SHIP: 5 colonists.

SHIPS: 6-ship (3 corn), 7-ship, 8-ship

STOCK: 70 colonists, 118 VP, 9 coffee, 9 tobacco, 6 corn, 11 sugar, 11 indigo

TRADING HOUSE: Corn.

Transcript and map are on the website.

## Enlightenment VIII

March 18<sup>th</sup> - 20<sup>nd</sup>, 2005

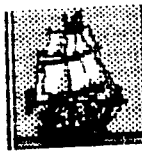
Hunt Valley Inn

Hunt Valley, MD



A four-round swiss format of Age of Renaissance using a special best three-out-of-four scoring system that encourages fast play and keeps most players in contention throughout.

## ON DECK



1890: Frueh, Zodda, Zieske  
 1895: Hanna, Zieske  
 1898: Hanna, Frueh, Zieske  
 1870: Zieske, Hanna, Frueh  
**BLACKBEARD:** Zodda, A Bargender, Barrett  
**BRITANNIA:** Zieske  
**COLONIAL DIPLOMACY:** Copeland, Nichols, Anderson, Boyum; need 3 more.  
**DIPLOMACY:** Boyum, Fryling, Nichols, Copeland confirmed; Curtis iffy.  
**GUNSLINGER:** Scott, Fowble, R Fisher; need 4 more  
**HISTORY OF THE WORLD, Pt 1:** Zieske, Morrison, Anderson, Wilson, Nichols like 1 or 2 more.  
**KINGMAKER:** Deb Anderson, R Fisher, Shacklett, Scott  
**MACHIAVELLI:** Nichols  
**MAGIC REALM:** Butitta, Deb A  
**MERCHANT OF VENUS:** R Fisher, Deb A  
**RUSSIAN CIVIL WAR:** Scott  
**SILVERTON:** Zieske, Deb A, Nichols  
**WIZARD'S QUEST:** A Bargender, R Fisher, Deb A

**OTHER POSSIBILITIES:** 1829 (N OR S), GODSFIRE, KAMAKURA, MONSTERS RAVAGE AMERICA, PLANET MINERS, SAMARAI.

## OUR SUBSCRIBERS

Dave & Debbie Anderson, 20832 Tuck Rd, Site 32, Farmington Hills, MI 48336; (248)473-7482; andersond4@michigan.gov  
 Christopher Bailey, 264 Fifth Avenue, Apartment 3C, New York, New York 10001; (917) 553-0070; christopher.bailey@csfb.com  
 Alan Bargender, 1517 Creekside Road, Green Bay, WI 54311; alanmb777@hotmail.com  
 Paul Barrett; pdb@hiraganadragon.plus.com  
 John Boardman, 234 East 19th St, Brooklyn, NY 11226-5302  
 Peter Boyum, 522 U Street, Rio Linda, CA 95673; (916) 705-2091; peterboyum@msn.com  
 Tom Butcher, 674 Roanoke Ave, Cuyahoga Falls, OH 44221; thomas-butcher@yahoo.com  
 John Butitta, 339 Ninth, Neenah, WI 54956; (414) 725-7218; docjob@tds.net  
 Rick Copeland, 1531 Pack Horse Rd, Winchester, VA 22603; (540) 888-4420; copec655321@topofva.net  
 Michael Fisher, 43 W Mannheim St Apt 2, Philadelphia, PA 19144-2942; (215) 438-9966; mikesfisher65@yahoo.com  
 Ron Fisher, 210 Normandy Dr, Wilmington, NC 28412; (910) 395-8330; skylark3@charter.net  
 Mark Frueh, 1128 Olympus Dr, Naperville, IL 60540; (630) 357-7780; mark\_frueh@msn.com  
 Chuck Hanna, 379 Wilett Ct, Severna Park, MD 21146-1912; (410) 544-3077; cchanna76@yahoo.com  
 Chris Hassler, 2000 S Armour Ct, La Habra, CA 90631; chassler@adelphia.net  
 Tom Howell, 365 Storm King Rd, Port Angeles, WA 98363; (360) 928-9698; off-the-shelf@olympus.net  
 Andy Lischett, 2402 Ridgeland Ave, Berwyn, IL 60402  
 Lee McConnell, 2023 Stancress Rd, Dublin, OH 43016-9546; blackhawk@netwalk.com  
 Wayne Morrison, LTSI-ASAC Khamis 05267, 7150 Troy Hill Dr, Elkridge, MD 21075; thomascat\_ksa@yahoo.com  
 Cary Nichols, 756532-938 S FM 1673, Snyder, TX 79549-8812.  
 Mike Scott, 16603 Colonial Dr, Fontana, CA 92336; (909) 357-6030; mikescmag2@juno.com  
 Jack & Rose Shacklett, 365 Hobbs-Reesor Rd, Vine Grove, KY 40174; (502) 828-4281; pilotshack@yahoo.com  
 Kerry Watson, 2138 Clovernook Lane, Neenah, WI 54956; (920) 882-5505; kwatson1@new.rr.com  
 Kevin Wilson, 18623 Santa Maria Dr., Baton Rouge, LA 70809-6702; (225) 751-3857; ckevinw@aol.com  
 Andrew York, PO Box 201117, Austin, TX 78720-1117; wandrew@compuserve.com  
 Paul Zieske, 3501 Keenan Lane, Glenview, IL 60025; (847) 498-9237; zieskep@juno.com  
 Rudy Zodda, 7 Hansen Ave, New City, NY 10956; (845) 708-9056; rzodda@aol.com

\*\*\*\*\*  
 DEADLINE FOR MOST GAMES IS 1800 CENTRAL TIME 1 Apr 05  
 \*\*\*\*\*

## The Bottom Line

This is **BORIS THE SPIDER**, a 'zine dedicated to the play of multiplayer games. BORIS is usually published following the first Friday of the month by Paul & Meg Bolduc, 203 Devon Ct, Ft Walton Beach, FL 32547-3110 and currently has a subscription price of \$10.50 for 12 issues in hardcopy (\$13.25 in Canada, and \$16 overseas) or a token \$1 by e-mail (waived if overseas). A hardcopy sub will also include an e-mail sub. Make checks payable to "Paul Bolduc". BORIS can be reached at (850) 863-9081, or prbolduc@aol.com. If phoning, expect to be greeted by an answering machine. If we're here, not engaged in an epic computer battle or enthralled in baseball, hockey, or college football, and recognize your voice, you may get to talk to a real human, so don't hang up upon hearing our recorded message (it changes every power outage). Visit the BORIS Website at: <http://hometown.aol.com/prbolduc/boris/borishome.htm>



## Source of the Nile

Turn 35



**The Cast:**  
 Brad Martin  
 Andrew York

Jason Bargender  
 Don Chinnery

D&D Anderson

**Published:** DD12 (lake, +79 acres), DD11 (lake, +75 acres), CC11 (lake, +88 acres), AA13 (veldt, river from 1 and 4 to 2), Z14 (veldt, river from 5 to 4, cataract, waterfall is 350 feet), Z13 (veldt, river from 1 to 2) and tribe L11 (the Mphahlele) in Z13. G24 (jungle, river from 3 to 6), H24 (swamp), G22 (mountain, river begins and extends to 4), H21 (desert, river from 1 to 3, oasis), I22 (veldt, river from 6 to 3), J19 (swamp), J18 (veldt), K18 (veldt), M10 (the Kimbundu) in G22, L15 (the Bagaza) in J19, M36 (the Ruanda) in J18, M37 (the Maleonde) in I22. P2 (swamp), O4 (lake, +21 acres), N4 (lake, +33 acres), M1 (the Ankan) in P2, FF8 (mountain, river from 6 to 5, cataract), FF7 (jungle/swamp), EE8 (jungle/swamp), EE9 (mountain, river from 3 to 1, 65 foot waterfall), DD8 (jungle/swamp), GG5 (veldt, river to 1), FF5 (veldt, river from 4 to 1), EE6 (desert, river from 4 to 1), DD6 (veldt, river from 4 to 2, 85 ft waterfall), DD7 (jungle/swamp), M24 (the Gadami) in FF7, and S2 (the Ngubane) in GG5.

Positions still available for fearless explorers. Contact Alan Bargender if interested.



## STELLAR CONQUEST

William T. Riker: Is over.

Kurzon Dax: Working orders for Production 16 and movement to Turns 17-20.