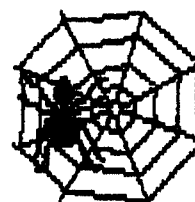


TABLE OF CONTENTS	
Address	pp 18-19
BLACKBEARD	p 8
BRITANNIA	p 7
CIRCUS MAXIMUS	p 5
COLONIAL DIPLOMACY	p 3
DIPLOMACY	p 2
1830	pp 10-11
1870	pp 12-13, 16
HISTORY OF THE WORLD	p 16
JUNTA	p 15
KINGMAKER	p 9
MACHIAVELLI	p 4
MAHARAJA	p 6
On Deck	p 18
PUERTO RICO	p 17
SCRABBLE	p 14
SOURCE OF THE NILE	p 19
STELLAR CONQUEST	p 19

BORIS THE SPIDER
 c/o 203 Devon Ct
 FWB, FL 32547-3110
<http://hometown.aol.com/prbolduc/boris/borishome.htm>



VOLUME VIII, #25

BORIS THE SPIDER

A Journal of Duplicitous Doings,
 Raw Power, and Naked Greed
 "Oh, what a tangled web we weave
 When first we practice to deceive!"
 -- Sir Walter Scott --



10 Jan 06

(#245)

HANNA WINS 1830!

Professor Hanna again showed us all how it should be played with a convincing win in "Frueh Is Missing", our 7th regular game of 1830 and his third victory. Yours truly came in a distant second, followed by Paul Zieske, Rick Copeland and Chris Bailey, who, having inherited a bad position, somehow averted bankruptcy -- a minor miracle.

IMMEDIATE GAME OPENINGS:

1830: Anticipate a game start in the next month or so to replace "Frueh Is Missing". Have Frueh, Zodda, Zieske, Copeland, and maybe Bailey. Would like 1 or 2 more.

SCRABBLE: There's only a turn or two left, see if you can outplay the leaders in at least one rack.

BORIS'S BULLETIN BOARD

THOUGHT FOR THE MONTH: "If someone ever tries to kill you, you try to kill them right back." -- Malcolm Reynolds, Captain of *Serenity*

NEW ON THE WEBSITE: We've updated the "Hall of Fame" page and fixed some typos in the official rule change pages for GUNSLINGER and CIRCUS MAXIMUS. Current games have, of course, been updated.

PICTURE OF THE MONTH: Wayne "Disaster Magnet" Morrison flicking elks at WBC.

Those of you receiving a hardcopy will note an additional stamp on this issue, a harbinger of a subscription rate hike. Yep, effective 8 Jan 06 (send complaints to the USPS), the new sub rate is \$11.50/12 issue year (or 0.9583¢ an issue). It costs me (5x11¢ for duplication + 39¢ postage) 94¢ alone to dupe and mail them.

The answer to last month's puzzle was 720 days (1 min/day * 60 min/hr * 12 hr).

BOOS & KUDOS

The Madame Bolduc Press Excellence Award (and free issue) goes this month to Jack Shacklett for his article datelined Istanbul in *Boris XVIII*.

This month's Ms Nar Super-Sudsy Bomb is lobbed at Cary Nichols for severe delay of game.

PERSONAL COMMUNICATION HERE (maybe):

Deadline for most games is 1800 CST 3 Feb 06



Tension in West!
Fall 1902

XVIII
2005F

CLIFFHOME: France and Germany, much to England's delight, seem very much like they are about to throw everything they have at each other. Ruse or not? In the East, the Lepanto has been blunted and the Russian heartland is wide open, so things look good for Sultan Ali Jack especially since Austro-Italian cooperation seems to be minimal.

TROOP MOVEMENT

AUSTRIA (Nichols): A Ser S F Gre, A Gal-Ukr, [F Gre S ITA F Ion-Aeg]nso, A Bud S A Vie-Tri, A Vie-Tri;

ENGLAND (Anderson): A Cly-Lpl, F Nwg-Nth, F Ska S F Nwg-Nth, F Lon S F Nwg-Nth;

FRANCE (Boyum): A Gas S A Pic-Bur, [A Pic-Bur], [F Mid-Eng], [F Eng-Pic], [F Spa(sc)-Mid];

GERMANY (Haffey): [A Den-Swe], A Bel S A Ruh-Bur, F Hol S A Bel, A Mun S A Ruh-Bur, A Ruh-Bur, [F Hel-Nth];

ITALY (Copeland): A Tun H, A Tri-Alb, [F Ion-Eas], [F Nap-Ion];

RUSSIA (R. Fisher): [A Fin-Swe], [A War-Gal], [F Rum S TUR A Bul]otm, r-???, F Nwy S GER F Hel-Nth, F StP(nc) S F Nwy.

TURKEY (Shacklett): A Bul-Rum, A Sev S A Bul-Rum, [F Aeg S ITA F Ion-Gre]nso, A Con-Bul, [F Smy-Eas].

Orders in brackets fail: amb = ambiguous, nso = not so ordered, otb = off the board, otm = on the move, r-??? = retreats somewhere.

Russian F RUM must retreat otb or to BLA.

SUPPLY CENTERS:

AUS: Bud Tri Vie Gre Ser

ENG: Edi Lon Lpl -Nwy

FRA: Bre Mar Par Por Spa

GER: Ber Kie Mun Bel Den Hol

ITA: Nap Rom Ven Tun

RUS: Mos StP War -Rum Swe +Nwy

TUR: Ank Con Smy Bul Sev +Rum

- (5) Even
- (3) Tear 1
- (5) Even
- (6) Even
- (4) Even
- (5) Even*
- (6) Build 1

* If F RUM r-otb, then may build 1.

Due next are orders for retreat, builds/tears and for Spring 1903 and Press. Ms Nar loves Press.

EMBASSY BEAT

A-R: Yes, I agree.

Istanbul: The Sultan was very distressed at the illness of Prime Minister Anderson, especially at the news that Turkish Treat may have been the cause. The Turkish government has not sent any Turkish Treat to the PM and suspects that devilish duplicitous doings induced the incapacitation. The Turkish government is also recalling a shipment of Feta cheese as it did not realize the PM was lactose intolerant. Special Envoy Aslan has assured the Sultan that Turkey has been cleared of any suspicion and will relay that information to Queen-Regent Deborah.

France - World: Greetings! I see the Krautmeister's massing troops along my border. Kaiser, what are you up to? As everyone can see, I have made no moves against you. Shuffling troops along my border is innocent. You will try to claim the same, but we all know half of what you say is false and the rest untrue. Someone needs to give the German a wedge! Who'll do it? Step forward now.



COLONIAL DIPLOMACY
"Wide Open Spaces"
French Flounder!
1888

2003I
ea07

ERRATA: Japanese [A Kyu-Nan] failed.

MIRKWOOD: Britain continues her slide into irrelevance, but it is France that appears to be in dire peril, losing a fleet at sea and surrounded by hostile China and Holland. Russia continues her recovery, the Turks continue their growth and may soon own the southwest corner of the board. Japan seems determined to irk her neighbors.

TROOP MOVEMENT

British A BEN retreats to HYD.

BRITAIN (Nichols): A Nep-Ben, A Hyd S A Nep-Ben, F Kar H, [F GoM S F Mad-WIO], A Bom S A Hyd, A Del-Pun, [F RS-Aden]r-???, F Mad-WIO;

CHINA (Paulson): A Yun S A Ben-U.Bur, A Sha-Nan, [A Tib-Ben], A Ben-U.Bur, A Pun-Nep, [A Kam-Tib], A Afg-Kag, A Ass S A Ben-U.Bur, [A Chu-Can];

FRANCE (G. Wilson): [A U.Bur S A Ran]r-???, A Ran S A U.Bur, [F Sul.S-Dav]d, F Ban(ec) S F GoS-Mal, F Coc-Ann, [F SCS-Can]r-???, [F GoS-Mal];

HOLLAND (Anderson): A Mna S F Cebu, F Cebu S F CS-Sul.S, F Sin S F Mal, F Cey S F EIO-GoM, F MP-LS, [F Mal S F Sun.S], F CS-Sul.S, F EIO-GoM, [F LP-Dav], F Sun.S S F CS-Sul.S, F Sar S F Sun.S, F AS S F EIO-GoM;

JAPAN (Quigley): F SoJ C A Ota-Via, A Seo H, F For S F ECS-SCS, F UP-MP, F ECS-SCS, A Kyo-Aki, F HK S F ECS-SCS, [F YS-SCS]imp, A Kyu-Kyo, A Ota-Via;

RUSSIA (Copeland): [A Ara-Aden], A Tas H, A Bok S A Tas, A Mos TSR Omsk;

TURKEY (Boyum): A Per-Afg, A Shi-Per, F Egy S F Med-RS, F Syr-Med, F Med-RS, F GoA-Ara.S, F PG S A Shi-Per.

Orders in brackets fail: d= destroyed, imp = impossible, otb = off the board, nso = not so ordered, r-??? = must retreat somewhere, u = unordered.

British F RS must retreat otb or to ERI, MEC, or SUD. British F GoM must retreat otb or to BoB or MAD. French A U.BUR must retreat otb or to MAY. French F SCS must retreat otb or to TON.

Supply Center Chart:

BRI: Bom Del Mad -Egy Kar Sud Ben -Omsk

CHI: Pek Sha Sik Ass Mon Mac P.Art Kam Kag +Chu +U.Bur

FRA: Ann Coc Ton May -HK -U.Bur Ban +Ran

HOL: Bor Java Sum New Ran Sar Dav Sin Ceb Mal Mna Cey

JAP: Kyo Kyu Ota Tok Fus Sak For Seo Via Can +HK

RUS: Mos Ode Aden Tas +Omsk

TUR: Ang Bag Con Per Rum Tab Shi +Egy

- (6) Tear 2*
- (11) Build 2
- (6) Build 1 **
- (12) Even
- (11) Build 2
- (5) Build 1
- (8) Build 1

* If both F GoM and F RS r-otb, then even. If either r-otb, then tear 1.

** If A U.BUR r-otb, then build 2.

Due next time are retreats, builds/tears, and orders for 1890. And press: Ms Nar craves press.

EMBASSY BEAT

France -> China/Holland/Japan: Group hug!

GM-France: Close. Would you believe group stab?

CLASSIFIEDS

Honk Kong - Japanese occupation forces today raided a brothel for Dutch military officers on leave. Arrested in the early morning raid were several high ranking Dutch naval officers who appeared to be men but were really just silly, screaming women. Japanese officials promise to keep their finger on the Dyke situation.



Gunboat MACHIAVELLI Three Sieges Begin! Summer 1458

2004A
pw1Q

TROOP MOVEMENTS: Turk F GoN retreats to SAL.

AUSTRIA (0d): A Sla-Car, A Tyr S A Aus, A Aus S A Tyr;
FRANCE (1d): F Cor Htu), A Mon B1, A Swi S AUS A Tyr, A Cre-Ber, A Tur B1, F Mar-Pro;
NAPLES (0d): F Otr S F IS-Mes, F IS-Mes, [F Bart-Aqu], [F Pal-TS], [F CM-Tun], [F GoN-Nap];
PAPACY (1d): A Sic B1, A Are-Urb, A Per S A Pat-Rome, [F Anc-Aqu] (r-???), A Luc S A Flo-Bol, A Pisa H, A Pat-Rom, A Flo-Bol;
TURKS (0d): F Dur-IS, [F Sal-Nap], [F Tun-CM], F Alb-LA, F Mes = G;
VENICE (0d): A Carin-Mil, [A Rome H] (r-???), A Mil-Pav, F LA-Anc, [A Man-Bol], F UA S F LA-Anc, [F TS S TUR F Sal-Nap];
AUTONOMOUS: Fer Mod Mon(b) Pio Salz Sie(b) Tur(b)

Orders in brackets fail. b = besieged, C = convoy, d = destroyed, imp = impossible, nlo = no longer owned, no = not owned, nso = not so ordered, nsu = no such unit, otb = off the board, otm = on the move, r-??? = must retreat otb or elsewhere, u = unordered.

Papal F ANC must retreat otb or into g. Venetian A ROME must retreat otb, or into g, or to CAP or SPO.

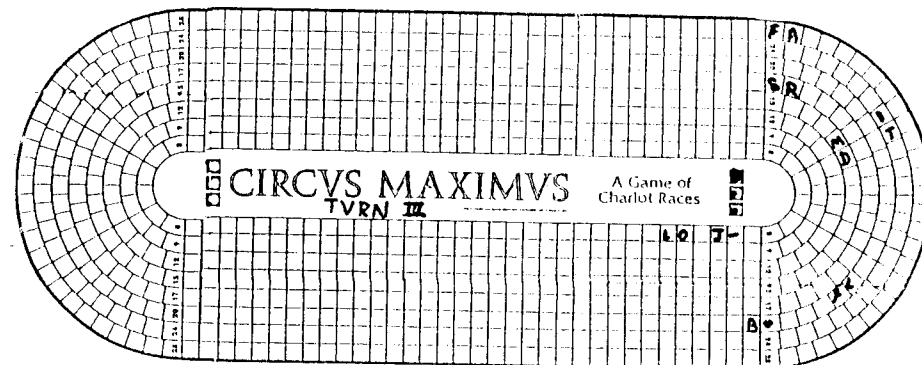
Orders for Fall 1458 are due next time. And Press. Ms Nar craves Press. Game transcript and map are on the website.

EMBASSY BEAT

The Pope to Venice/Turkey: If we continue our war and the other two are able to end theirs, as Austria has suggested, our strength and wealth may not matter. Perhaps we too should consider a truce. I don't think either of us can really take the other out so maybe we should cooperate and eliminate the other two and then we can either fight or call it square. I've ordered this turn to defend myself and to retake what I've lost but I'm not so locked into that idea that a positive sign from you (or positive press) can get me to back off. Hopefully you'll consider the same.

Naples to Venice/Turkey: Ouch!! Nice touch. I guess I should have paid more attention to how much cash you were holding on to. Nice aggressive move. I wish I had thought of it. It is, however, a very expensive way to gain forces. :-)

Austria to GM: Oh, how unfair, being able to bribe when being besieged. Not nice at all... I thought rule 4) (original battleline rules) of the special bribe rules would prevent that.... but I see that the rewritten rule on next to last line of the 9.3 Bribes rules says controled areas, thus Trent qualify's, huh?



TWO NMRS!

Odds	COLOR	DRIVER (CDM/DH)	CART	Whip	Wheels	TEAM	END	Speed	D/E
3-1	White	Trickster (+2/9)	L	Y	0/0	6333	43	17	0/0
5-1	Aqua	Mellito Domi Adsum (+2/8)	M	Y	0/0	3433	30	17	0/0
7-1	Green	Benjios (0/6)	H	Y	0/0	6435	52	18	0/0
7-1	Red	Fastus Maximus (+2/10)	L	Y	0/0	7536	18	23	1/0
9-1	Yellow	Josephis (+2/9)	L	Y	0/0	6335	41	19	0/0
9-1	Blue	Sprinticus Rex (+2/8)	L	Y	0/0	7536	30	23	0/0
22-1	Purple	Luke Outtus (+1/7)	M	Y	0/0	5435	43	18	0/0
39-1	Orange	Flippus Maximus (+2/10)	H	Y	0/0	5324	27	16	0/0

TURN #:

Flippus Max: 16, no whip. Ahead 3, attack MDA cart-horse (9+2 vs 5+2, MDA doesn't evade, 7+3 = 2 in pts to #4 horse), ahead 4, attack Fastus cart-cart (7+2 vs 11+2, Fastus evades), out 1, repeat attack (6+2 vs 5+2, no evasion, 10+2-2 = no effect), ahead 1, attack Fastus cart to horse (7+2 vs 7+2, Fastus brakes -2 END), ahead 1, in 1.

Benjios: 18, NMRI! In 2, ahead 14.

Luke Outtus: 18, no whip. In 1, ahead 10, attack Josephus cart-cart (5+1 vs 8+2, J brakes -2 END), ahead 5.

Mellito Domi Adsum: 17-2, no whip. Ahead 2, attack SR cart to horse (12+2 vs 5+2, succeeds, 11+2-2 = n/e), ahead 1, attack cart-horse (3+2 vs 3+2, SR brakes, -2 END), in 1, ahead 8.

Fastus Max: 23, no whip. Ahead 23.

Trickster: 17, NMRI! Ahead 17.

Josephis: 8, no whip. Ahead 6, in 1.

Sprinticus Rex: 18, no whip. Ahead 2, corner strain @ 3 (10-2 = n/e, -3 END), ahead 8, out 1, ahead 7.

Odds	COLOR	DRIVER (CDM/DH)	CART	Whip	Wheels	TEAM	END	Speed	D/E
3-1	White	Trickster (+2/9)	L	Y	0/0	6333	43	17	1/0
5-1	Aqua	Mellito Domi Adsum (+2/8)	M	Y	0/0	3433	30	15	1/0
7-1	Green	Benjios (0/6)	H	Y	0/0	6435	52	18	1/0
7-1	Red	Fastus Maximus (+2/10)	L	Y	0/0	7536	16	23	1/0
9-1	Yellow	Josephis (+2/9)	L	Y	0/0	6335	39	19	0/0
9-1	Blue	Sprinticus Rex (+2/8)	L	Y	0/0	7536	25	23	1/0
22-1	Purple	Luke Outtus (+1/7)	M	Y	0/0	5435	43	18	0/0
39-1	Orange	Flippus Maximus (+2/10)	H	Y	0/0	5324	27	16	1/0

Game transcript and map are on the website.

There is much pleasure to be gained from useless knowledge.

Bertrand Russell



MAHARAJA

Turn 12



BRITANNIA

"Frisian"

Turn XI



Rudy Zodda: Green
Paul Barrett: Yellow

THE CAST:

Dave Anderson: Purple
Wayne Morrison: Blue

Muslims (0): Grow 4 pp. Add 1A @ Maharashtra. 3A Delhi-Agra (Rajputs submit; Muslims w-Malwa), 1A Maharashtra-Bidar, 1A Khandesh-Berar, 1A Malwa-Khandesh. Score 1 Raj VP.
Press: Rajputs submit to the Muslim horde. That way they can be forced to retreat back to Delhi and face the Mughal horde.

Mughals (2): Grow 4 pp. Add 1A @ Rajputana (only 1 left in force pool). *1st Wave:* 2A Kashmir-Lahore-Delhi, 2A Lahore-Delhi-Agra (Rajputs may submit), 1A Punjab-Rajputana-Malwa, 3A Rajputana-Malwa (6.5, 4.3:5.4, 3.2 -1 Muhal, -2 Muslims*), 2A Afghanistan-Punjab-Sind, 2A Afghanistan-Punjab, 2A Afghanistan-Punjab-Rajputana, 2A Afghanistan-Punjab-Lahore, 2A Afghanistan-Punjab-Kashmir, 2A Afghanistan-Gandhara, 2A Afghanistan-Baluchistan. Akbar Afghanistan-Punjab-Delhi. *2nd Wave:*
* Muslims may retreat to Oudh or Kandesh.

Score: Purple 55, Yellow 48, Blue 41, Green 14.

BOARD:

Pandya (0.5): 1A @ Golconda.
Marathas (2.5): 2A @ Bijapur, Mysore; 1A @ Andhra, Orissa.
Cholas (x): 1A @ Malabar, Sinhala.
Sinhalese (1.5): 2A @ Karnatak, Lanka.
Rajputs (0.5): 2A @ Bundelkhand, Ladakh; 1A @ Agra*, Nepal; Sanga @ Gondwana.
Muslims (1): 2A @ Maharashtra, Malwa*, Oudh; 1A @ Berar, Bidar, Khandesh.
Mughals (0): 3A @ Malwa*, Akbar, 2A @ Delhi; 2A @ Agra*, Baluchistan, Gandhara, Lahore, Kashmir, Punjab, Rajputana, Sind.
Portuguese: 2A @ Arabian, 1A, F @ Gujarat, Albuquerque @ ???.
Dutch: 2A @ Indian O.
British: 2A @ Arabian

LEGEND: A = Army, F = factory, L = leader, pp = population points, r-??? = retreats-???, w-??? = withdraws-???

Game transcript and map are posted on the website.

A CLEAN DESK IS A SIGN OF A SICK MIND

Eleven hundred executives were asked to rate the orderliness of their desks. Fifty-eight percent said they keep their desks "spotless"; 31% rated theirs "messy."

The price of the stock of the messy desk group rose 3.5% last year while the Mr. Cleans watched their share price drop by nearly 1%. The survey team concluded that those with messy desks are more creative and that that increased corporate value. Or was it the other way around? In fact, were the differences in the averages statistically significant? Who cares, we messy desk types knew the answers all along.

Jericho Promotions, NYC

The Cast: Nations in Italics are extinct, in parentheses are not yet in play.
A (Hanna): *Romans, R-Bs*, Norsemen, (Norwegians)
B (Anderson): Welsh, *Jutes*, (Normans)
C (Butitta): Brigantes, Caledonians, Danes
D (Boyum): Picts, Irish, Angles
E (Frueh): *Belgae*, Scots, Saxons, (Dubliners)

Turn XI

Board:

Welsh (B, 2): 3A @ Powys; 2A @ Clwyd; 1A @ Cornwall, Devon, Dyfed, Gwent.
Brigantes (C, 0): 2A @ Dalriada, Galloway, Strathclyde.
Picts (D, 0.5): 2A @ Alban, Mar, Skye; 1A @ Hebrides, Moray.
Caledonians (C, 1): 2A @ Calthness.
Irish (D, 2): 2A @ Cheshire, Gwynedd; 1A @ March.
Norsemen: 2A @ Cumbria, Orkneys.
Danes: 4R @ Frisian, North.
Saxons (E, 2.5): 2A @ N Mercia; 2A, Egbert @ Downlands; 1A @ Avalon, Essex, Hwicce, Kent, Lindsey, Norfolk, S Mercia, Suffolk, Sussex, Wessex.
Angles (D, 1): 3A @ Bernicia; 2A @ Dunedin, Lothian, Pennines.

Angles (1): Grow 3.5 pp. Add 1A @ Bernicia. 4A Bernicia-Lothian-Strathclyde (6, 4, 4, 3, 3, 1 -1 Brig *).

*Brigante may retreat to Galloway or Dalriada; if so, the Angles will lose 2A to overpopulation.

SCORE: C(52), D(47), A(45), C(43), B(34)

Turn XII

Board:

Welsh (B, 2): 3A @ Powys; 2A @ Clwyd; 1A @ Cornwall, Devon, Dyfed, Gwent.
Brigantes (C, 0): 2A @ Dalriada, Galloway; 1A @ Strathclyde.
Picts (D, 0.5): 2A @ Alban, Mar, Skye; 1A @ Hebrides, Moray.
Caledonians (C, 1): 2A @ Calthness.
Irish (D, 2): 2A @ Cheshire, Gwynedd; 1A @ March.
Norsemen: 2R @ Atlantic, Irish; 2A @ Cumbria, Orkneys.
Danes: 6A, Bros @ North; 4R @ Frisian, North.
Saxons (E, 2.5): 2A @ N Mercia; 2A, Egbert @ Downlands; 1A @ Avalon, Essex, Hwicce, Kent, Lindsey, Norfolk, S Mercia, Suffolk, Sussex, Wessex. Alfred @ ?
Angles (D, 1.5): 4A @ Strathclyde; 2A @ Dunedin, Lothian, Pennines.

Saxons are King (+4 EVP and 1A to be placed now).

SCORE: C(56), D(47), A(45), C(43), B(34)

Welsh (2): Grow 3.5 pp. Add 1A @ ...

Legend: A = infantry army, C = cavalry army, F = fort, L = legion or leader, pp = population point, R = raider, r-??? = retreats to ???, w-??? = withdraws to ???, (*) = in melee, _#_ = attack by/against cav/legion

Current map and transcript can be found on the website.



BLACKBEARD

Turns 68-72



THE CAST:

1. (Barrett) Portugues: Sloop
2. (Zodda) Davis, Sloop
3. (Bargender) Taylor, Sloop
4. (Martin) Rackham, Schooner.

STATUS:

#	Captain	Ship	Hex	Spd	Cbt	Not	Cun	Unr	NW	H1	H2	Hostage	Attk
1	Portugues	Sloop	P18A	+3	6	28	(2/3)	4	212	30	5	--	FSN
2	Davis	Sloop	H25A	+3	4	14	5	4	649	25	--	--	NP
4	Rackham	Senr	C221	-2	5	0	2	7	0	--	--	--	--
4	Rhett	KC	T18	5	13								
3	Taylor	Sloop	P18A	+3	6	0	3	4	0	45	--	--	
4	Ogle	KC	Box1	3	11	sc							
2	Maynard	KC	Box1	4	14								
3	Herdman	KC	Box1	3	15								

The Board:

Guvs: Pro: 35, 46, 53, 31
 Merchants: Q22 (S7), 66, 54, 16, 26(B6), 54, 52, 26, 24, 52, 52, 55, 55, 21, 61, 61, 45
 Warships: P18
 Out-of-Play Pirates: Teach (#3)

Anti: 24, 54, 64

Destroyed Port: 14, 32

Turn	Player	Action	Draw
68	3	JT 2+3, weighs anchor, slips by warship 1+3 > 1, moves to O15, search = 2 merchants Random event (reshuffle), scurvy worsens Portuguese Letter of Marque	65 11
69	1	BP 6+3, weighs anchor, slips by warship 1+3 > 2, moves to O15	25
70	4	JR moves 3-2 to C211, search = no	16
71	1	BP breaks off attack, -1 Unr	54
72	2	HD sells H1 for 25	44,21
73	4		32
			55

STATUS:

#	Captain	Ship	Hex	Spd	Cbt	Not	Cun	Unr	NW	H1	H2	Hostage	Attk
1	Portugues	Sloop	O15	+3	6	28	(2/3)	3	212	30	5	--	FSN
2	Davis	Sloop	H25A	+3	4	14	5	4	674	--	--	--	NP
4	Rackham	Senr	C211	-2	5	0	2	7	0	--	--	--	--
4	Rhett	KC	T18	5	13								
3	Taylor	Sloop	O15	+3	6	0	3	4	0	45	--	--	
4	Ogle	KC	Box1	3	9	sc							
2	Maynard	KC	Box1	4	14								
3	Herdman	KC	Box1	3	15								

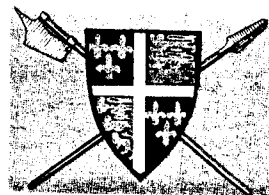
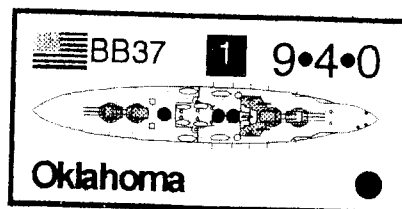
The Board:

Guvs: Pro: 35, 46, 53, 31
 Merchants: Q22(S7), 66, 54, 16, 26(B6), 54, 52, 26, 24, 52, 52, 55, 55, 21, 61, 61, 45, O15, O15(??)
 Warships: P18
 Out-of-Play Pirates: Teach (#3)

Anti: 24, 54, 64

Destroyed Port: 14, 32

Letter of Marque: P



KINGMAKER

"King of Pain"

TURN 10

KOP

The Cast:

THE MAD HUNGARIANS (Dowrey): Percy [100], Lieutenant of Ireland [(2)50], Archbishop of York [(30)], Bishop of Durham [(30)], Burgundian Crossbowmen [30], Carlsbrooke, Northampton [(20)], Fitzalan [30], Warden of the Northern Marches [(1)50], Duke of Lancaster[30], Scots Archers [20], *Le Nicholas*. Event cards (5), Crown Cards (5).

THE CALIFORNIA CONNECTION (Scott): Pole [30], Chancellor of England [50], Scrope [10], Earl of Wiltshire [30], Chancellor of Cornwall [(1)50], Swansea [(20)], Leicester [(20)], Holland [20], Duke of Lancaster [30], Scots Archers [20], Courtenay[30], Admiral of England [50]. Event cards (5), Crown Cards (5).

KNIGHTS OF THE PRIVY POT (Deb Anderson): Mowbray [50], Treasurer of England [50], *Le Swan*, Lancaster [(20)], Hastings [10], 2 Flemish Crossbowmen [20], Bishop of Carlisle [(30)], Burgundian Crossbowmen [30], Cromwell [10], Earl of Kent [30], Constable of London [(2)50]. Event cards (3), Crown Cards (4).

THE STAFFORDSHIRE QUARTERSTAFFS (Shacklett): Stafford [30], Chamberlain of Chester [(2)50], Scots Archers [20], Nottingham [(20)], Neville [50], Audley [10], Roos [10], Herbert [10], Talbot [30], Company of Saxons [20]. Event cards (2), Crown Cards (3).

WESTERN FRONT (Martin): Howard [10], Duke of Exeter [20], Archbishop of Canterbury, *Le Rose*, Bristol [(30)], Coventry [(20)], Clifford [10], Earl of Worcester [30], Captain of Calais [(3)50], Bishop of Lincoln [20], Gray [20], Berkeley [10], Newcastle. Event cards (3), Crown Cards (4).

NOTE: Percy went to Durham rather than York.

Turn 10 Movement:

SG: Audley & Roos @ Lh-Li-Kd-Jc-Jd-Ig, Herbert, Neville & Stafford @ Hg-Ih-Ig, Talbot (unordered) holds at Hd. **WF:** Clifford @ Lincoln-Kk-Jk-Jm-Iq-Hpi(play free move)-Gu-London. Howard @ Canterbury-Ei-Eh London. Berkeley & Grey @ Rye-Ei-Eh-London. *Le Rose* @ Rye sails to S26. **MH:** Percy Durham-Pn-Oh-Og-Oe-Na (Preston). DoL Kenilworth-Jg-Ke-Li-Mh-Net(play free move) -Nd-Nc-Na, joins Percy at Preston. Fitzalan (unordered) holds at Bamburgh. **KPP:** Cromwell @ Daventry-Hn-Gm-Wallingford. Hastings @ Carlisle-Qc-Pc-Pd-Oc-Preston. Mowbray holds in Beaumaris. **TCC:** Pole & Courtenay @ Kenilworth-Hn-St Albans-London(C). Holland w/ Richard of York into Kenilworth Castle. Duke of York comes into play at Fotheringhay-Iq-Royston-Pleshey-London(C). *Le Margaret* holds @ Maldon. *Le Christopher* holds @ Dartmouth. Scrope (unordered) holds at Kenilworth.

PRESS:

Pole @ London: Cromie, Oh Cromie, where art thou? Come out and play. Let's mix it up a bit - our side vs you, OK?

GM to Pole: Since you're the challenger, that makes you "skins". That makes him "shirts/armor".

Turn 10 Combat:

Percy & Duke of Lancaster (320) vs Hastings (110) @ Preston.

NOBLES: Audley, Herbert, Neville, Roos, Stafford @ Ig; Berkeley, Clifford, Courtenay, Grey, Howard, Pole @ London; Fitzalan @ Bamburgh; Percy, DoL & Hastings @ Preston; Mowbray w/ Edmund in Beaumaris; Holland in Kenilworth. Scrope @ Kenilworth. Talbot @ Hd. Cromwell in Wallingford. **SHIPS:** *Le Christopher* @ Dartmouth, *Le Margarete* @ Maldon, *Le Nicholas* & *Le Rose* @ S26, *Le Swan* @ Preston.

HEIRS: King Henry, Margaret, & Edward of Wales @ Preston w/ Percy, Richard of York in Kenilworth w/Holland, Edward of March @ Carlsbrooke, Edmund of Rutland in Beaumaris w/ Mowbray, George @ Ig w/ Stafford, Richard of Gloucester (RIP).

MH & KPP have until 20 Jan to agree to peace or augment their forces in Preston. I'll resolve the battle and do the Crown and event cards that weekend so we can get a full turn in next time.

1870

1870
"ARTEMIS GORDON"
SR 10-SR 3



PLAYER STATUS:

(* indicates Presidency)
Frueh: \$147, SC Co, KATYpc, 1 KATY
Bailey: \$205 MRB Co, 2 SL&SF*
Hanna: \$340, GS Co.
Martin: \$400, GRS.
Zieske: \$420.

CORPORATE STATUS:

Corp	Prez	Price	Par IO	Pool	Cash	Trains	Dest	Tokens
SL&SF	CB	A100	100 8	0	\$1000	--	N	(E12), 2,D

SR 10:

Martin buys Prez Cert of GM&O setting par = \$68 (-\$136).
Zieske buys Prez Cert of KATY setting par = \$82 (-\$164).
Frueh buys GM&O (-\$68).
Bailey passes. Hanna & Martin buy GM&O (-\$68 each).
Zieske buys KATY (-\$82).
Frueh buys GM&O (-\$68). GM&O floats!
Bailey, Hanna & Martin buy GM&O (-\$68 each).
Zieske buys KATY (-\$82).
Frueh passes. Bailey buys KATY (-\$82). KATY floats!
Hanna buys GM&O (-\$68). GM&O sold out!
Martin & Zieske buy 1 KATY (-\$82 each).
All pass. Frueh has the priority. GM&O is sold out so rises to E72.

OR 1:

Privates pay Martin \$5, Bailey \$10, Hanna \$15, Frueh \$30.
SL&SF: Place initial token in E12. Lay #57(nw) in E12 (-\$60) & #8(ne) in D11. No train, no run. Price retreats to A90. Buy three 2-trains (-\$240).
KATY: Place initial token in B11. Lay #6(w) in B11 (-\$40) & #8(nw) in C12. No train, no run. Price retreats to C76. Buy two 2-trains (-\$160).
GM&O: Place initial token in M20. Lay #57(e) in M20 & #8(sw) in M18. No train, no run. Price retreats to E68. Buy two 2-trains (-\$160).

PLAYER STATUS:

(* indicates Presidency)
Frueh: \$41, SC Co, KATYpc, 1 KATY, 2 GM&O <Priority>
Bailey: \$65 MRB Co, 2 SL&SF*, 1 KATY, 1 GM&O
Hanna: \$151, GS Co., 3 GM&O
Martin: \$51, GRS, 4 GM&O*, 1 KATY.
Zieske: \$10, 5 KATY*.

CORPORATE STATUS:

Corp	Pres	Price	Par IO	Pool	Cash	Trains	Dest	Tokens
SL&SF	CB	A90	100 8	0	\$700	222	N	E12, 2,D
KATY	PZ	C76	82 2	0	\$620	22	N	B11,2,D
GM&O	BM	E68	68 0	0	\$520	22	N	M20,1,D

The Bank has \$9,842.

AVAILABLE TRAINS: 33333344444555556666888,10,10,2...

AVAILABLE TILES:

Yellow: 1(1), #2(1), #3(3), #4(6), #5(2), #6(1), #7(9), #8(19), #9(23), #55(1), #56(1), #57(3), #58(4), #69(1)

SR 2:

Frueh & Bailey pass. Hanna buys 1 KATY (-\$82).
Martin passes. Zieske has KATY redeem 1 share from him (\$76).

Frueh, Bailey, Hanna, & Martin pass. Zieske buys 1 KATY (-\$82). KATY sold out!
All pass. Frueh retains the Priority. GM&O and KATY sold out so rise to D72 and B82 respectively.

OR 2:

Privates pay Martin \$5, Bailey \$10, Hanna \$15, Frueh \$30.
SL&SF: Lay #9(se) in F13 (-\$60) & #8(nw) in G14. Run E12-B11 (\$40). Pay dividends (CB +\$8, SLSF +\$32). Price returns to A100.
KATY: Lay #6(sw) in B9 & #9(sw) in C8. Run E12-B11 (\$40) & B11-B9 (\$40). Pay dividends (PZ +\$40, MF, CB, CH, BM, & KATY +\$8). Price to B90. Buys one 3-train (-\$180). **Phase change.**
GM&O: Lay #5 in N17(-\$80) & #9(sw) in M16. Run M20-M22 (\$40) & M20-N17 (\$40). Day dividends (BM +\$32, CH +\$24, MF +\$16, CB +\$8). Price to D76. Buys one 3-train (-\$180)

PLAYER STATUS:

(* indicates Presidency)
Frueh: \$95, SC Co, KATYpc, 1 KATY, 2 GM&O <Priority>
Bailey: \$99 MRB Co, 2 SL&SF*, 1 KATY, 1 GM&O
Hanna: \$116, GS Co., 3 GM&O, 1 KATY
Martin: \$96, GRS, 4 GM&O*, 1 KATY.
Zieske: \$44, 5 KATY*.

CORPORATE STATUS:

Corp	Prez	Price	Par IO	Pool	Cash	Trains	Dest	Sh	Tokens
SL&SF	CB	A100	100 8	0	\$672	222	N	0	E12, 2,D
KATY	PZ	B90	82 0	0	\$372	223	N	1	B11,2,D
GM&O	BM	D76	68 0	0	\$260	223	N	0	M20,1,D

The Bank has \$10,247.

AVAILABLE TRAINS: 3333444445555666888,10,10,2...

AVAILABLE TILES:

Yellow: 1(1), #2(1), #3(3), #4(6), #5(1), #6(0), #7(9), #8(18), #9(20), #55(1), #56(1), #57(3), #58(4), #69(1)
Green: #14(4), #15(4), #16(2), #17(2), #18(2), #19(2), #20(2), #23(4), #24(4), #25(3), #26(2), #27(2), #28(2), #29(2), #141(2), #142(2), #143(1), #144(1)

SR 3:

Frueh & Bailey pass. Hanna sells 3 GM&O and 1 KATY, buys presidency of IC, setting par at \$68 (+\$318 -136). GM&O falls to E64 and KATY falls to C82.
Martin buys 1 GMO (-\$64).
Zieske has KATY buys 1 share of itself from bank pool (-\$82).
Frueh buys GM&O(-\$64).
Bailey buys GM&O from pool for \$64, GM&O sold out.
Hanna buys Frisco from IO for \$100.
Martin, Zieske, Frueh & Bailey pass. Hanna buys 1 SLSF, then sells 2 SLSF (+\$100), SLSF drops to C82.
Martin, Zieske, Frueh & Bailey pass. Hanna buys 1 IC (-\$68).
Martin, Zieske, Frueh & Bailey pass. Hanna buys 1 IC (-\$68).
Martin, Zieske, Frueh & Bailey pass. Hanna buys 1 IC (-\$68).
Martin, Zieske, Frueh & Bailey pass. Hanna buys 1 IC (-\$68). IC floats.
All pass. Martin has the Priority. KATY & GM&O are sold out so rise to B90 & F68b respectively.

PLAYER STATUS:

(* indicates Presidency)
Frueh: \$31, SC Co, KATYpc, 1 KATY, 3 GM&O
Bailey: \$35 MRB Co, 2 SL&SF*, 1 KATY, 2 GM&O
Hanna: \$26, GS Co., 6 IC*
Martin: \$31, GRS, 5 GM&O*, 1 KATY, <Priority>
Zieske: \$44, 5 KATY*.

CORPORATE STATUS:

Corp	Prez	Price	Par IO	Pool	Cash	Trains	Dest	Sh	Tokens
KATY	PZ	B90	82 0	0	\$290	223	N	2	B11,2,D
SL&SF	CB	C82	100 6	2	\$672	222	N	0	E12,2,D
IC	CH	F68a	68 4	0	\$680	--	N	0	(K16),1,D
GM&O	BM	F68b	68 0	0	\$260	223	N	0	M20,1,D

The Bank has \$9,951.

Q₁₀

SCRABBLE

Turns 3/4

A₁

Standard SCRABBLE rules apply. Everyone plays the same rack of tiles vs three computer opponents. You score what you propose to be played. We take the highest scoring submission (ties broken at random) and play that to the board.

Acceptability of words will be decided by the program (high score only), my unabridged dictionary, Ms Nar's SCRABBLE dictionaries, and common usage, so yes, we'll allow those much maligned four letter Anglo-Saxon words (but the program won't).

The Turn 3 rack is: A,A,G,S,S,Y,blank

PLAYER	WORD(S)	SCORE	TOTAL
Thels	GAINSAYS	72 pts	196 pts
MacDuff	GAINSAYS	72 pts	196 pts
Nichols	GayS/aG/aY/IS	12 pts	136 pts
York	GAMaY/Ya	29 pts	102 pts
Orgelfinger	<NMR>	0 pts	71 pts
D&D Anderson:	<Resigned>	0 pts	20 pts
Copeland:	<NMR>	0 pts	14 pts

ON THE BOARD

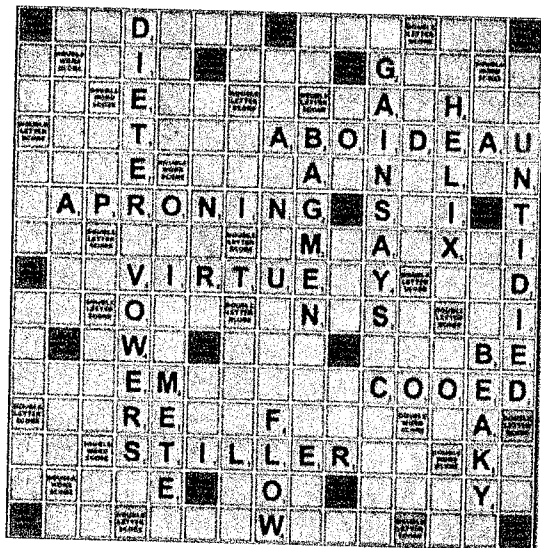
Team Boris:	GAINSAYS	72 pts	196 pts
MacAdam:	MEtE/eM/rE	22 pts	118 pts
MacBeth:	APRONING	68 pts	215 pts
MacCormick:	DIETER	18 pts	98 pts

The current rack is: IOQRSUV.

There are no tiles left "in the bag" (in fact, MacCormick has only six on its rack). The game ends when one of the players depletes his/her/its rack. Negative points accrue for unused tiles.

LEGEND: Capital letters are being played. Small letters are already on the board. Underlined letters are blanks. The MacXxxx entries are computer generated.

Game transcript and board are on the website.



JUNTA

MUSTACHE ASSASSINATED!

Years 5-6

**THE CAST:** (and Table order)

Rick Copeland (Martini)
 Chuck Hanna (Shades)
 Wayne Morrison (Mustache)

Dave Anderson (Hat)
 John Buttitta (Stickpin)

YEAR 5:**STATUS:**

Shades: *El Presidente*, Labor Union (5v), Rigged Voting (5v), Monarchists (3v), 3C, 3\$

Stickpin: 1st Brgd CO, Air Force CO, (2v), 4C, 2\$

Mustache: 1st Brgd CO (2v), The Church (10v), 5C, 1\$

Martini: Admiral (1v), 5C, 0\$

Hat: Minister & 2nd Brgd CO (2v), Conservatives (8v), Radicals (3v), Christian Democrats (5v), 3C, 2\$

E. LOCATIONS: Hat is at work. Stickpin and Martini are at the bank. Mustache and Shades are at home.

F. ASSASSINATIONS & BANKING: Minister's assassin targets Mustache @ Home. Hat plays "Character Assassin" vs Mustache @ Mistress' and "Amateur Assassin" vs Mustache @ Bank (-1 MP). Minister's assassin makes the hit (dr = 5), __MP to Hat. The Church and 5 cards are discarded. Stickpin makes a deposit.

The Hat faction denies any involvement in the recent death of the Mustache leader. The Minister was at home drinking eggnog and trimming the Christmas tree.

We are in deep remorse by the loss and will get back to work after the holidays and investigate the whole matter. In our remorse, we will send a card to the mustache's widow for solace.

YEAR 6:**STATUS:**

Shades: *El Presidente*, 3rd Brgd CO (2v), Labor Union (5v), Rigged Voting (5v), Monarchists (3v), 3C, 3\$

Stickpin: 1st Brgd CO, Air Force CO, (2v), 4C, 0\$

Mustache: elects heir; 0v, 0C, 0\$.

Martini: Admiral (1v), 5C, 0\$

Hat: Minister & 2nd Brgd CO (2v), Conservatives (8v), Radicals (3v), Christian Democrats (5v), 1C, 3\$

A. CARD DRAW: All draw 2 cards. Shades plays "Secret Political Donation" (__MP) and discards one card. Stickpin plays "Secret Political Donation" (__MP). Martini plays "Annual Street Festival" (Coup Excuse) and discards "Rabble". Hat plays Students and donates _____ to Mustache. Mustache does nothing.

B. CABINET ASSIGNMENTS: Mustache receives 2nd Brigade

C: BUDGET: *El Presidente* receives the foreign aid of _____. He proposes:

Due next: Budget announcement and vote. Locations and assassinations. Banking. Coup?

STATUS: There is a Coup excuse.

Shades: *El Presidente* (1v), Labor Union (5v), Rigged Voting (5v), Monarchists (3v), 3C, 3\$

Stickpin: 1st Brgd CO, Air Force CO, (2v), 5C, 1\$

Mustache: 2nd Brgd CO (1v); 0v, 3C, 0\$.

Martini: Admiral (1v), 5C, 0\$

Hat: Minister & 3rd Brgd CO (2v), Conservatives (8v), Radicals (3v), Christian Democrats (5v), Students (3v), 1C, 3\$

You have __MP in hand and __MP in the Bank.



HISTORY OF THE WORLD

CHRYSES

EPOCH VI



THE CAST:

Azure: Martin
Orange: Anderson

Ebony: Nichols
Purple: Zieske

Green: Wilson
Red: Morrison

EPOCH VI

BOARD:

AIII: Yel(c); **AIV:** Dan, Mor, NAP, SAp(c,PM); **AV:** Che, ESt, GPC(AM), Mal, Man, Mek, Mon, SiK, Sz(c,AM), Tar(OM), Wei(RM), Yan(GM).
EI: Con, SAF; **EII:** Dnl, LRh(2), NEP(2); **EIII:** Alb(EM), CMa, Hig, Ire, NGa, WGa; **EIV:** Ara(c), EAn, Lev, MTi, Nub, Pal, PSD, UTi; **EV:** CEu(C), BSb(3).
GII: Cau; **GV:** GaD(RM), Irr.
OI: CAm(C,F); **OIV:** Bal(3,C,F), Dal(2), Pin, WAn; **OV:** Sca, Sib, Wlb, WIn.
PIII: Cre, Pyr; **PV:** Hin, LTi(PM), PPI, Tur, Zag.
RI: App, Dee; **RIII:** GaV, Hok(C,f), UIn(PM); **RIV:** Cey(2), EGh, WGH, WSt; **RV:** EGh(C,RM, Architecture), LIn(GM), Sum, WDe.
Fleets: AtI(O), Blai(O), BoB(R), EMS(P), Nth(O), Red(2E), SoJ(A), WMS(P).
Vacant: Nil(AM).

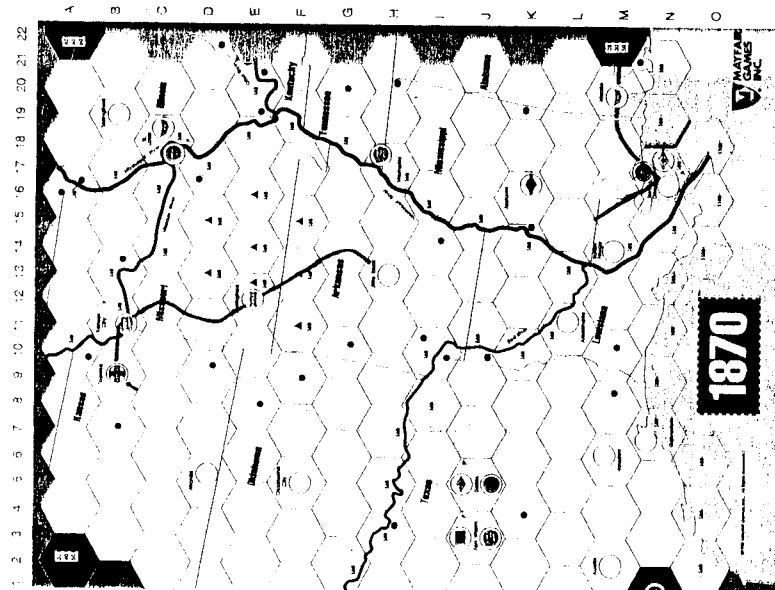
S<URE (VP/SP): G(118/46), R(98/42), P(96/54), A(93/55), O(85/41), E(82/48)

Orange passes to Green. Red passes to Azure. Green passes to Ebony. Ebony passes to Red. Purple holds. Azure must pass to Orange.

MING DYNASTY (R): Play "Black Death" in China & SE Asia (Che=4, GPC=3, SiK=5, Sze=6, Tar=3, Wei=5, Yan=2, Yel=2, EIn=5, Irr=6, Mal=6, Mek=4, Sum=3 n/c). 1A,C @ Che (1AV r-Yan), ...

S<URE (VP/SP): G(118+/46+), R(98+/52), P(96+/54+), A(93+/55+), O(85+/41+), E(82+/48+)

IMPORTANT: Look ahead a bit and if you occupy (or plan to occupy) the starting territory of an Epoch VI empire, kingdom, or minor, send retreat instructions. That would be Hig (EIII), Tur(PV), NAn, Mex, WAn(OIV), Wlb(OV), Pyr(PIII), GaV(RIII), PSD(EIV).



PUERTO RICO

Turns 11-12



Turn 11 (concluded)

Fisher chooses **Trader**, sells indigo for 1+1d. Butcher sells sugar for 2d. Martin passes.
Butcher chooses **Builder** and builds City Hall (-6d, 4 cr). Martin can't build. Barrett builds Hacienda (1d, 1 cr). Buttitta and Fisher build not.

Martin chooses **Craftsman** (+1d), produces (3+1) tobacco and 1 corn. Barrett produces 3 indigo, 1 coffee, 1 sugar, 1 corn and 3d. Buttitta produces 1 indigo, 3 corn, and 3 tobacco. Fisher produces 4 indigo, 1 sugar, 2 corn. Butcher produces 1 sugar, 1 indigo, 1 corn, and 2d. Both Prospectors and Captain gain 1d.

STATUS:

Paul Barrett: Gov, Mayor. Sm Market(x), L Indigo(x_x), Sm Indigo(x), C Roaster(x), Sm Sugar(x), Factory(x), Residence(_), Quarry(x), Coffee(x), 3xIndigo(x), Corn(x), Coffee(_), Sugar(x), 6d, 2 VP, 3 indigo, 1 coffee, 1 sugar, 1 corn.

John Buttitta: Settler. Sm Market(x), Sm Indigo(x), Construction Hut(_), Hospice(x), Tobacco St(xxx), Office(x), L Market(x), Indigo(x), 3xCorn(x), Quarry(x), 4xTobacco(x), 1d, 8 VP, 1 indigo, 3 corn, 3 tobacco.

Ron Fisher: Trader. Hacienda(_), Hospice(x), Sm Indigo(x), L Indigo(xxx), Office(x), L Sugar(_x_x), 4xIndigo(x), 2xSugar(x), 3xQuarry(x), 2xCorn(x), Tobacco(_), 2d, 12 VP, 4 indigo, 1 sugar, 2 corn.

Tom Butcher: Builder. Sm Sugar(x), Construction Hut(x), Sm Warehouse(x), Factory(x), Sm Indigo(x), Corn(x), 3xSugar(x), 3xQuarry(x), Indigo(x), Indigo(_), SJ(2), 2d, 2 VP, 1 sugar, 1 indigo, 2 corn.

Brad Martin: Sm Warehouse(x), Tobacco St(xxx), Harbor(x), Guild Hall(x), Corn(x), 3xTobacco(x), 2xCoffee(x), 2xCoffee(_), Sugar(_), 2d, 10 VP, 4 tobacco, 2 corn.

AVAILABLE BUILDINGS: All but Sm Indigo, Sm Market, Hacienda, Construction Hut, Sm Warehouse, Hospice, Office, Factory, Guild Hall, Residence, City Hall.

AVAILABLE PLANTATIONS: Corn, 2xIndigo, 2xSugar, Tobacco

AVAILABLE ROLES: Builder, Captain(1d), Craftsman, Mayor, 2xProspector(1d), Settler, Trader.

COLONY SHIP: 7 colonists.

SHIPS: 6-ship, 7-ship, 8-ship

STOCK: 17 colonists, 89 VP, 8 coffee, 2 tobacco, 1 corn, 7 sugar, 1 indigo

TRADING HOUSE: indigo, sugar.

Turn 12

Governor Buttitta chooses **Trader**, sells tobacco for (3 + 4 cr). Fisher, having Office, sells sugar for 2d. Trading House is full, no further trades allowed. House empties to stock.

Fisher chooses **Builder** and builds a L Market (-2d, 3cr). Butcher ...

STATUS:

John Buttitta: Gov, Trader. Sm Market(x), Sm Indigo(x), Construction Hut(_), Hospice(x), Tobacco St(xxx), Office(x), L Market(x), Indigo(x), 3xCorn(x), Quarry(x), 4xTobacco(x), 8d, 8 VP, 1 indigo, 3 corn, 2 tobacco.

Ron Fisher: Builder. Hacienda(_), Hospice(x), Sm Indigo(x), L Indigo(xxx), Office(x), L Sugar(_x_x), L Market(_), 4xIndigo(x), 2xSugar(x), 3xQuarry(x), 2xCorn(x), Tobacco(_), 2d, 12 VP, 4 indigo, 2 corn.

Tom Butcher: Sm Sugar(x), Construction Hut(x), Sm Warehouse(x), Factory(x), Sm Indigo(x), City Hall(_), Corn(x), 3xSugar(x), 3xQuarry(x), Indigo(x), Indigo(_), SJ(2), 2d, 2 VP, 1 sugar, 1 indigo, 2 corn.

Brad Martin: Sm Warehouse(x), Tobacco St(xxx), Harbor(x), Guild Hall(x), Corn(x), 3xTobacco(x), 2xCoffee(x), 2xCoffee(_), Sugar(_), 2d, 10 VP, 4 tobacco, 2 corn.

Paul Barrett: Sm Market(x), L Indigo(x_x), Sm Indigo(x), C Roaster(x), Sm Sugar(x), Factory(x), Residence(_), Quarry(x), Coffee(x), 3xIndigo(x), Corn(x), Coffee(_), Sugar(x), 6d, 2 VP, 3 indigo, 1 coffee, 1 sugar, 1 corn.

AVAILABLE BUILDINGS: All but Sm Indigo, Sm Market, Hacienda, Construction Hut, Sm Warehouse, Hospice, L Market, Office, Factory, Guild Hall, Residence, City Hall.

AVAILABLE PLANTATIONS: Corn, 2xIndigo, 2xSugar, Tobacco

AVAILABLE ROLES: Builder, Captain(1d), Craftsman, Mayor, 2xProspector(1d), Settler.

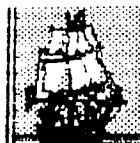
COLONY SHIP: 7 colonists.

SHIPS: 6-ship, 7-ship, 8-ship

STOCK: 17 colonists, 89 VP, 8 coffee, 3 tobacco, 1 corn, 9 sugar, 2 indigo

TRADING HOUSE: empty.

ON DECK



1830: Frueh, Zodda, Zieske, Copeland
1835: Hanna, Zieske
1856: Hanna, Frueh, Zieske
AGE OF RENAISSANCE: Copeland
BALKAN WARS: K Wilson
BRITANNIA: Zieske, Copeland
DUNE: K Wilson, Martin
GUNSLINGER: Scott, Fowle, R Fisher; need 4 more
HISTORY OF THE WORLD I: Zodda.
MACHIAVELLI: Nichols.
MAGIC REALM: Butitta, Deb A
MERCHANT OF VENUS: R Fisher, Deb A, Dowrey
RUSSIAN CIVIL WAR: Scott, Martin
SAMURAI (AH): Copeland
SETTLERS OF CATAN: Copeland, Scott
SILVERTON: Zieske, Deb A, Nichols
WIZARD'S QUEST: A Bargender, R Fisher, Deb A

OTHER POSSIBILITIES: 1829 (N OR S), 4000 AD, AGE OF RENAISSANCE, AIR BARON, ATTIKA, BALKAN WARS DIP, CIRCUS IMPERIUM, CIRCUS MINIMUS, DOWN WITH THE KING, EVO, GODSFIRE, KAMAKURA, KREMLIN, LIFTOFF!, MONSTERS RAVAGE AMERICA, PLANET MINERS, SAMURAI, STELLAR CONQUEST, TITAN.

OUR SUBSCRIBERS

Dave & Debbie Anderson, 20832 Tuck Rd, Site 32, Farmington Hills, MI 48336; (248)473-7482; ravenclawnerdz@sbcglobal.net
 Christopher Bailey, 264 Fifth Avenue, Apartment 3C, New York, New York 10001; (917) 553-0070; christopher.bailey@yahoo.com
 Alan Bargender, 1517 Creekside Road, Green Bay, WI 54311; alanmb777@hotmail.com
 Ben Barrett; hd@hiraaganadragon.plus.com
 Paul Barrett; pdb@hiraaganadragon.plus.com
 Tom Blennerhassett; aquamonkey6@hotmail.com
 John Boardman, 234 East 19th St, Brooklyn, NY 11226-5302
 Peter Boyum, 522 U Street, Rio Linda, CA 95673; (916) 705-2091; peterboyum@msn.com
 Tom Butcher, 2129 Pinebrook Trl, Cuyahoga Falls, OH 44323-3303; thomas-butcher@sbcglobal.net
 John Butitta, 339 Ninth, Neenah, WI 54956; (414) 725-7218; docjob@tds.net
 Rick Copeland, 1531 Pack Horse Rd, Winchester, VA 22603; (540) 888-4420; cope655321@topofva.net
 Bob Dowrey, 76 Potter Ave., Orchard Park, NY 14127; dowreyhome@adelphia.net
 Ron Fisher, 210 Normandy Dr, Wilmington, NC 28412; (910) 395-8330; skylark3@charter.net
 Mark Frueh, 1128 Olympus Dr, Naperville, IL 60540; (630) 357-7780; mark_frueh@msn.com
 Jim and Marcia Fryling, 5444 Bonnie, Kentwood, MI 49506; james_fryling@cornerstone.edu
 Tim Haffey Sr, 810 53rd Ave, Oakland, CA 94601; (510) 536-3513; trhaffey@yahoo.com
 Chuck Hanna, 379 Willett Ct, Severna Park, MD 21146-1912; (410) 544-3077; cchanna76@yahoo.com
 Chris Hassler, 2000 S Armour Ct, La Habra, CA 90631; chassler@adelphia.net
 Tom Howell, 365 Storm King Rd, Port Angeles, WA 98363; (360) 928-9698; off-the-shelf@olympus.net
 Andy Lischett, 2402 Ridgeland Ave, Berwyn, IL 60402
 Lee McConnell, 2023 Stancrest Rd, Dublin, OH 43016-9546; blackhawk@netwalk.com
 Wayne Morrison, LTSI-ASAC Khamis 05267, 7150 Troy Hill Dr, Elkridge, MD 21075; thomascat_ksa@yahoo.com
 Cary Nichols, 756532-938 S FM 1673, Snyder, TX 79549-8812.
 Gerry Paulson, Box 156, Amisk, AB T0B-0B0 CANADA; hanginga@telusplanet.net
 John Outgley, 8266 Yeakel Road, Zionsville, PA 18092; 215-541-0342; john@outgleyclan.com
 Mike Scott, 16603 Colonial Dr, Fontana, CA 92336; (909) 357-6030; mikesmag2@juno.com
 Jack & Rose Shacklett, 365 Hobbs-Reesor Rd, Vine Grove, KY 40174; (502) 828-4281; pilotshack@yahoo.com
 Kerry Watson, 21138 Clovermook Ln, Neenah, WI 54956; kwatson1@new.rr.com
 Graham Wilson, 48 Harbournview Cres, Toronto, Ontario M8V 4B1; grahamaw@rogers.com
 Kevin Wilson, 18623 Santa Maria Dr., Baton Rouge, LA 70809-6702; (225) 751-3857; ckevinwl@cox.net
 Andrew York, PO Box 201117, Austin, TX 78720-1117; wandrew@compuserve.com
 Paul Zieske, 3501 Keenan Lane, Glenview, IL 60025; (847) 498-9237; zieskep@juno.com

Rudy Zodda, 7 Hansen Ave, New City, NY 10956; (845) 708-9056; rzodda@aol.com

DEADLINE FOR MOST GAMES IS 1800 CENTRAL TIME 3 Feb 06

The Bottom Line

This is **BORIS THE SPIDER**, a 'zine dedicated to the play of multiplayer games. BORIS is usually published following the first Friday of the month by Paul & Meg Bolduc, 203 Devon Ct, Ft Walton Beach, FL 32547-3110 and currently has a subscription price of \$10.50 for 12 issues in hardcopy or a token \$1 by e-mail (waived if overseas). A hardcopy sub will also include an e-mail sub. Make checks payable to "Paul Bolduc". BORIS can be reached at (850) 863-9081, or prbolduc@aol.com. If phoning, expect to be greeted by an answering machine. If we're here, not engaged in an epic computer battle or enthralled in baseball, hockey, or college football, and recognize your voice, you may get to talk to a real human, so don't hang up upon hearing our recorded message (it changes every power outage). Visit the BORIS Website at:

<http://hometown.aol.com/prbolduc/boris/borishome.htm>



Source of the Nile

Turn 45



The Cast:

Brad Martin
 Andrew York

Jason Bargender
 Don Chinnery

D&D Anderson

Published this turn: F4 (veldt, river 3 to 5), G5 (swamp), F5 (desert, river to 4).

Published: DD12 (lake, +79 acres), DD11 (lake, +75 acres), CC11 (lake, +88 acres), AA13 (veldt, river from 1 and 4 to 2), Z14 (veldt, river from 5 to 4, cataract, waterfall is 350 feet), Z13 (veldt, river from 1 to 2), G3 (jungle, river from 1 to 5), F3 (jungle, river from 1 and 3 to 4), E4 (jungle, river from 3 and 6 to 4), D3 (lake +38 acres), G4 (jungle, river starts and runs to 6), G24 (jungle, river from 3 to 6), H24 (swamp), G22 (mountain, river begins and extends to 4), H21 (desert, river from 1 to 3, oasis), I22 (veldt, river from 6 to 3), J19 (swamp), J18 (veldt), K18 (veldt), P2 (swamp), O4 (lake, +21 acres), N4 (lake, +33 acres), FF8 (mountain, river from 6 to 5, cataract), FF7 (jungle/swamp), EE8 (jungle/swamp), EE9 (mountain, river from 3 to 1, 65 foot waterfall), DD8 (jungle/swamp), GG5 (veldt, river to 1), FF5 (veldt, river from 4 to 1), EE6 (desert, river from 4 to 1), DD6 (veldt, river from 4 to 2, 85 ft waterfall), DD7 (jungle/swamp), CC6 (veldt), BB6 (veldt, river to 5), BB5 (mountain, river from 2 to 4 and 5), CC4 (desert, river to 4), DD3 (swamp), CC5 (desert), DD10 (lake, +32 acres), DD9 (lake, +56 acres), CC10 (veldt), CC9 (jungle, river begins and flows to 1), BB10 (jungle, river from 4 to 1), AA11 (jungle, river from 4 to 1), AA12 (veldt), Z12 (veldt, river 4 to 5), CC12 (lake), F4 (veldt, river 3 to 5), G5 (swamp), F5 (desert, river to 4).

Positions still available for fearless explorers. Contact Alan Bargender if interested.

STELLAR CONQUEST

Kurzon Dax: Awaiting orders for Production 32 and Movement 33-36.