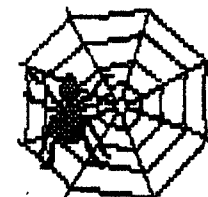


VOLUME VIII, #26

BORIS THE SPIDER

A Journal of Duplicitous Doings,
Raw Power, and Naked Greed
"Oh, what a tangled web we weave
When first we practice to deceive!"
-- Sir Walter Scott



8 Feb 06

(#246) CHOO-CHOO GAME NIRVANA

CHATTANOOGA RAIL GAMING CHALLENGE X was held at the Country Suites Inn in Chattanooga on 13-15 Jan 06. Registration was \$25 in advance. Rooms were \$94/night plus tax, but you got two rooms and a bath including two double beds, a couch, two TVs, a microwave, a minifridge, free breakfast, and a comp buffet with beer and soda Thursday night.

The CRGC was really two cons in one. Downstairs raged the team 18xx tourney featuring the likes of Don Chinnery, Ken Getermuth, and Anthony Carver. Upstairs, the Puffing Billy Tourney held sway. I played in the latter (alas! couldn't scare up a Team Boris), so I'll be reporting on it.

The Puffing Billy Tourney began with an early bird round Thursday night consisting of one game each of UNION PACIFIC and TICKET TO RIDE with the first two places getting prizes (I came in third). The tourney proper began Friday morning with rounds starting every two hours from 0800 to 2200 hrs inclusive with every round featuring two or three different games. Play as many as you can or as few as you wanted to. Saturday's schedule was the same but Sunday was 0800 and 1230.

I played thirteen games over the four days, UNION PACIFIC (twice), TICKET TO RIDE (twice), TICKET TO RIDE EUROPE (twice), SANTA FE RAILS (twice), EURORAILS, EXPRESS, RAIL BARON, SILVERTON, and RAILROAD TYCOON. I managed a win in SF RAILS and TICKET TO RIDE EUROPE as well as a special prize (five gold Sack1 dollars) for the first gold delivery in SILVERTON. Also offered were 1830, EMPIRE BUILDER, METRO, 1870, STEVENSON'S ROCKET, INDIA RAILS, DAMPFROS 18AL, AGE OF STEAM, FREIGHT TRAIN, BRITISH RAILS, IRON DRAGON, NEW ENGLAND RAILS, AUSTRALIAN RAILS, 1856, LUNAR RAILS, MAINLINE 1829, RUSSIAN RAILS (deliver tanks to Moscow anyone?), and NIPPON RAILS. Competition was friendly and they didn't mind that it'd been 15 years since I last played EURORAILS.

If you can share a room with a buddy or two, this Con is a great bargain. Mark Derrick, the sponsor, is thinking of moving it to February to deconflict with the middle-school cheerleader convention that's driven up room prices these last two years, so don't mark your calendars yet.

BORIS'S BULLETIN BOARD

THOUGHT FOR THE MONTH: "The time is always right to do what is right." -- Martin Luther King Jr.

NEW ON THE WEBSITE: We've fixed some typos in the Coalfields and Bonds variants for 1830. "Frueh is Missing" has been moved to the finished section.

PICTURE OF THE MONTH: Ex-Boriser Don Chinnery hard at work in 1856 at Chattanooga Railgame Challenge X.

Tom Butcher is looking for some NEW WORLD players for his zine *Blut und Essen*. See p 18 for his e-address.

BOOS & KUDOS

The Madame Bolduc Press Excellence Award goes this month to BORIS for the press responding Anderson's "ASS" press.

This month's Ms Nar Super-Sudsy Bomb is lobbed at the author of the classified in "Wide Open Spaces". Cute, but distasteful.

PERSONAL COMMUNICATION HERE (maybe):

BORIS THE SPIDER

c/o 203 Devon Ct

FWB, FL 32547-3110

<http://hometown.aol.com/prbolduc/boris/borishome.htm>

TABLE OF CONTENTS

Addresses	
BLACKBEARD	pp 18-19
BRITANNIA	p 8
CIRCUS MAXIMUS	p 7
COLONIAL DIPLOMACY	p 5
DIPLOMACY	p 3
1830	p 2
1870	pp 10-11
HISTORY OF THE WORLD	pp 12-13
JUNTA	p 15
KINGMAKER	p 16
MACHIAVELLI	pp 9, 11
MAHARAJA	p 4
On Deck	p 6
PUERTO RICO	p 18
SCRABBLE	pp 17, 4, 5
SOURCE OF THE NILE	p 14
STELLAR CONQUEST	p 19

Deadline for most games is 1800 CST 3 Mar 06



VIENNA SACKED! Spring 1903

XVIII
2005F

ERRATA: Russian A War-Gal did not fail.

CLIFFHOME: Austria has indeed scored a pyrrhic victory. In smashing the wandering Italian army in ALB, she has allowed probable enemies into both VIE and GRE. The Russian army can be easily dislodged (perhaps towards strongman Germany), but that Turkish fleet will require (ahem) Italian assistance to dislodge -- or is the the beginning of an unholy Austro-Turkish alliance? Meanwhile in the West, little was accomplished other than shifting of forces. Russia now has another army available to defend MOS and the naval muscle to theoretically send British F SKA packing. The French are hunkering down to defend their centers, but with Queen Debbie's fleets stretched to the max, why are FGR hesitating to put an end to Wicked Witch West?

TROOP MOVEMENT

Russia retreats F RUM otb. England disbands A LPL. Russia builds A WAR. Turkey builds A CON.

AUSTRIA (Nichols): [A Ser S A Bud], [A Ukr-War], F Gre-Alb, A Bud S A Ser, A Tri S F Gre-Alb;
ENGLAND (Anderson): [F Nth-Hol], F Ska S F Lon-Nth, [F Lon-Nth];
FRANCE (Boyum): [A Gas S A Pic-Par], A Pic H(u), F Mid-Bre, [F Eng-Pic], F Spa(sc)-Mar;
GERMANY (Haffey): A Den S RUS A Nwy-Swe, [A Bel-Pic], [F Hol-Bel], [A Mun-Bur], [A Bur-Gas], [F Hel-Nth];
ITALY (Copeland): A Tun-Apu, [A Alb S AUS A Gre](otm, d), F Ion C A Tun-Apu, F Nap-Tyn;
RUSSIA (R. Fisher): A Fin-StP, A Gal-Vie, F Nwy-Swe, F StP(nc)-Nwy [A War-Mos].
TURKEY (Shacklett): A Rum S A Bul-Ser, [A Sev-Mos], F Aeg-Gre, [A Bul-Ser], F Smy-Aeg, [A Con-Bul].

Orders in brackets fail: amb = ambiguous, nso = not so ordered, otb = off the board, otm = on the move, r-??? = retreats somewhere.

Due next are orders for retreat and for Fall 1903 and Press. Ms Nar loves Press.

EMBASSY BEAT

Italy to all--The Italian army in Albania has reported to the Pope that the grate counterfeit cheese scare did not originate in Albania. Apparently there is nothing at all to eat in that benighted province, so if there were any counterfeit cheese, it would be consumed by the locals at once. We will continue to examine the problem.

--"King of Pain" (from p 9)

COMBAT: None.

CROWN CARDS: None to distribute.

TURN 12

EVENT CARDS (reshuffled at end of Turn 11:

MH: #130, "Vacillating Noble". Fitzalan forfeits movement phase(?).
TCC: #47, "Peasant Revolt" Bourchier to Pleshey (n/e), Pole to Wingfield, Essex to Colchester (n/e), Marshal to Maldon (n/e).
KPP: #61, "Scots Raid" Fitzalan to Berwick.
SQ: #100, "Gales at Sea" *Le Rose* and *Le Lucas* sink and go back to the Crown Deck.
WF: #22, "Parliament May be Summoned by the Chancellor" Pole's option.

NOBLES: Audley, Herbert, Neville, Roos, Stafford, Talbot @ Ig; Berkeley, Clifford, Grey @ Wallingford(c); Fitzalan in Berwick; Hastings & Percy @ York(c); Howard @ Ed; Mowbray in Beaumaris; Courtenay, Holland, Scrope in Bath; Talbot @ Hd; Cromwell in Wallingford; Pole in Wingfield.

SHIPS: *Le Christopher* @ Douglas, *Le Margarete* & *Le Nicholas* @ Lynn, *Le Swan* @ Preston.

HEIRS: Reds: King Henry @ York(c) w/ Percy, Margaret & Edward of Wales @ York(c) w/ Hastings; Artie @ Cardigan. Whites: Richard of York in Bath w/ Holland, Edward of March @ Carlsbrooke, Edmund of Rutland in Beaumaris w/ Mowbray, George @ Ig w/ Stafford, Richard of Gloucester (RIP).



COLONIAL DIPLOMACY "Wide Open Spaces" Brits Beset! 1890

2003I
ea07

ERRATA: The Dutch lost RAN so must tear 1. France is even. Japan may only build 1.

MIRKWOOD: The situation continues to deteriorate for the Brits. On their eastern flank the Chinese have grabbed BEN (again), the Turks are sucking up their African colonies and menacing the western borders of India. But for the Sultan's pisspoor messenger service, the Russians could've made a beach landing in Mysore and the Turks have another fleet through the Suez. Can it get worse than that? Probably. Meanwhile, the Japanese have taken two slugs to the chin as their two vanguard units have been both clobbered.

TROOP MOVEMENT

British F RS retreats otb. British F GoM retreats to MAD. French A U.BUR retreats to MAY. French F SCS retreats to TON. Brits tear F WIO. China builds A MAC & A SHA. Holland tears F SIN. Japan builds F KYU. Russia builds A MOS. Turkey builds F BAG.

BRITAIN (Nichols): [A Ben H](r-???), A Hyd S A Ben, [F Kar-Ara.S](r-???), [F Mad-GoM], A Bom H, A Pun-Del.

CHINA (Paulson): A Yun S A U.Bur-May, A Nan S A Chu-Can, A Tib S A Nep-Ben, A U.Bur-May, A Nep-Ben, A Kam S A Kag, A Kag S RUS A Tas-Afg, A Ass S A Nep-Ben, A Chu-Can, A Mac H, A Sha S A Chu-Can;

FRANCE (G. Wilson): [A May-Can](r-???), A Ran S F Ban(ec), F Ban(ec) H, F Ann S F GoS-SCS, F Ton S F GoS-SCS, F GoS-SCS;

HOLLAND (Anderson): A Mna S F Cebu, F Cebu S F LP-MP, F Cey-WIO, [F LS-For], F Mal S F AS, F Sul.S-Dav, F GoM S F Cey-WIO, F LP-MP, F Sun.S S F Mal, F Sar-Sul.S, F AS S F GoM;

JAPAN (Quigley): F SoJ C A Aki-Via, A Seo H, [F For S F MP], F MP H(r-???), F SCS H(d), A Aki-Via, F HK S F SCS, F YS S F Kyu-ECS, A Kyo H, A Vla-Irk, F Kyu-ECS;

RUSSIA (Copeland): [A Ara-Mys], A Tas-Afg, A Bok-Tas, A Omsk-Kra, A Mos-TSR-Omsk.

TURKEY (Boyum): A Afg-Kar, A Per S A Afg-Kar, F Egy-Sud, [F Med-Red](F Egy otm), F RS-Eri, F Ara.S S A Afg-Kar, F PG S A Afg-Kar, F Bag-Shi.

Orders in brackets fail; d= destroyed, imp = impossible, otb = off the board, nso = not so ordered, r-??? = must retreat somewhere, u = unordered.

British A BEN must retreat otb or to LUC or U.BUR. British F KAR must retreat otb or to RAJ. French A MAY must retreat otb or to N.SIAM. Japanese F MP must retreat otb or to UP.

Due next time are retreats and orders for 1892. And press: Ms Nar craves press.

EMBASSY BEAT

Russia to Japan -- Stop using me as an excuse to send your troops to the mainland. You just want the Chinese coastal centers and everyone, including China, knows of your greediness. Beware.

Russia to Holland -- Hey Dutchy, I see you have a nice way of treating your friends and allies. However, since your fleets can't reach Moscow, how about we get together and have some sushi. If we could ally, it might stretch the Japanese line a might thin, don't you think?

CLASSIFIEDS

From the Argentine Embassy in Southeast Asia: Dutch Dykes get the French-Kiss of Death; Russian Red Returns; Lazy Turks Resting on their Ottomans; Japan and China will rule the world as Western Powers watch their holdings vanish.



Gunboat / NACHATZELL

Naples Thumped!

Fall 1458

2004A
pw1Q

TROOP MOVEMENTS:

Papal F ANC retreats into g. Venetian A ROME retreats into garrison.

AUSTRIA (0d): A Car S A Aus-Carin, A Tyr S A Aus-Carin, A Aus-Carin;

FRANCE (1d): F Cor-Sar, A Mon B2, A Swi S AUS A Tur, A Ber-Trent, A Tur B2, F Pro-Sav;

NAPLES (0d): F Otr-Sal, F Mes B1, F Bari H, F Pal-TS, F CM-TS, F GoN-Nap;

PAPACY (1d): A Sie B2, A Urb S G Anc = F, A Per S A Rome, G Anc = F, A Luc S A Bol, A Pisa H, A Rome B1, A Bol S A Urb;

TURKS (0d): F IS-Mes, F Sal S VEN F TS-Nap, F Tun-CM, F LA-Otr, G Mes S F IS-Mes;

VENICE (0d): A Mil S A Man-Cre, G Rome = A, A Pav H, F Anc H, A Man-Cre, F UA-Bol, F TS-Nap;

AUTONOMOUS: Fer Mod Mon(b) Pio Salz Sie(b) Tur(b)

Orders in brackets fail. b = besieged, C = convoy, d = destroyed, imp = impossible, nlo = no longer owned, no = not owned, nso = not so ordered, nsu = no such unit, otb = off the board, otm = on the move, r-??? = must retreat otb or elsewhere, u = unordered.

Venetian F ANC must retreat otb or to AGU.

Control Chart: (Variable Income Roll is "2")

AUS (0+11d): carin HUN TYR AUS -mil +Car = 4C

FRA (1+21d): MAR pro -Pav Sar Cor -Cre Sav Swi +AVI +Man +Trent +Tur = 9C

NAP (0+14d): -aqu(?) BARI cap NAP -MES PAL -sal +otr = 3C

PAP (1d+25d): ANC rome spo FLO PISA ARE pis Per urb +Bol +Sie = 7C

TUR (0d+17d): ALB bos DUR her TUN Rag -otr +Mes +sal = 5C

VEN (0d+35d): DAL fir PAD TRE VEN ver -Car Cro -Bol ist -Trent Mil -sie +aqu(?) +Cre +Pav +Rome(c) = 10C

Autonomous: Fer Mod -Mon Pio Salz -Sie -Tur

Orders for the retreat and for Spring 1459 are due next time. And Press. Ms Nar craves Press. Game transcript and map are on the website.

EMBASSY BEAT

Austria to France: Thank you. I'll support your army now in Ber to go into MIL on the Spring Turn, unless this turn you've written press that says different.

The Pope to Venice & Turkey: The offer still stands. Austria is coming south. France is come east. We're massively entangled. The only parties who profit by our continued fight is everyone else. Again, my orders, for both, are defensive in nature or attempting to hold/retake what I previously held. All you need to do is show some interest in cooperation and we're off to the races. Like I said, let's kill the rest and then duke it out ourselves.

Naples to Venice & Turkey: We're following the Pope's lead. He speaks for our combined forces. :-)

--"PUERTO RICO" (from p 17)

AVAILABLE BUILDINGS: Sm Sugar, L Sugar(2), Coffee Roaster(2), University(2), Harbor, Wharf, Fortress, Custom House

AVAILABLE PLANTATIONS: 3xCoffee, Indigo, 2xSugar

AVAILABLE ROLES: Builder, Captain, Craftsman, 2xProspector(2d), Settler, Trader.

COLONY SHIP: ? colonists.

SHIPS: 6-ship, 7-ship, 8-ship

STOCK: 15 colonists, 63 VP, 7 coffee, 2 tobacco, 2 corn, 9 sugar, 2 indigo

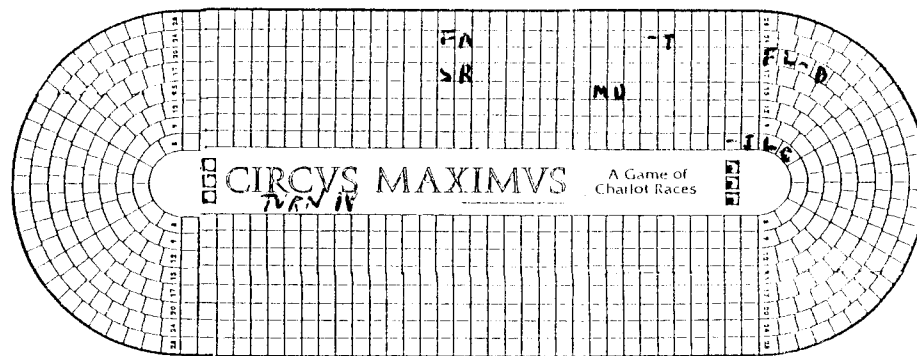
TRADING HOUSE: empty.

STATUS:

Ron Fisher: Gov. Hacienda(x), Hospice(x), Sm Indigo(x), L Indigo(xxx), Office(x), L Sugar(x, x), L Market(x). 4xIndigo(x), 2xSugar(x), 3xQuarry(x), 2xCorn(x), Tobacco(x), 3d, 16 VP, 2 corn, 4 indigo, and 1 sugar.

Tom Butcher: Sm Sugar(x), Construction Hut(x), Sm Warehouse(x), Factory(x), Sm Indigo(x), City

--continued on p 5



Trickster Slowed!

Odds	COLOR	DRIVER (CDM/DH)	CART	Whip	Wheels	TEAM	END	Speed	D/E
3-1	White	Trickster (+2/9)	L	Y	0/0	6333	43	17	1/0
5-1	Aqua	Mellito Domi Adsum (+2/8)	M	Y	0/0	3433	30	15	1/0
7-1	Green	Benjios (0/6)	H	Y	0/0	6435	52	18	1/0
7-1	Red	Fastus Maximus (+2/10)	L	Y	0/0	7536	16	23	1/0
9-1	Yellow	Josephis (+2/9)	L	Y	0/0	6335	39	19	0/0
9-1	Blue	Sprinticus Rex (+2/8)	L	Y	0/0	7536	25	23	1/0
22-1	Purple	Luke Outtus (+1/7)	M	Y	0/0	5435	43	18	0/0
39-1	Orange	Flippus Maximus (+2/10)	H	Y	0/0	5324	27	16	1/0

TURN N:

Flippus Max: 16, no whip. Ahead 10, attack Trickster cart-horse (9+2 vs 7+2), Trickster fails to evade so takes 9+3 = 4 injury to #1 horse. Ahead 5.

Trickster: 17-4, whip (2, -2 END). Ahead 8, attack Fastus driver lash, (7+2 vs 6+2), Fastus fails to evade (8+2 vs 11+2 = -3 column, 3 = M = -2 MP). Ahead 6, in 1.

Benjios: 18, no whip. Ahead 18.

Josephis: Speed 9, no whip. Ahead 2, corner strain @ 1 over (8-2 = n/e, -1 END), ahead 7.

Luke Outtus: 10, no whip. Ahead 5, corner strain @ 2 over (8-2 = n/e -2 END), ahead 5.

Mellito Domi Adsum: 15, no whip. Ahead 5, attacks Sprinticus cart-cart (6+2 vs 8+2); Sprinticus must brake -2 END). Ahead 10

Sprinticus Rex: 20, no whip. Ahead 1, cornerstrain @ 3 over (6-2 = n/e, -3 END), ahead 19.

If attacked swerve outward to avoid attack. If attacked while in turn and no swerve outside is available, brake instead. If forced to the wall, brake to avoid attack..

Fastus Max: 23-2, no whip. Ahead 19, in 1.

Odds	COLOR	DRIVER (CDM/DH)	CART	Whip	Wheels	TEAM	END	Speed	D/E
3-1	White	Trickster (+2/9)	L	Y	0/0	2333	41	13	1/0
5-1	Aqua	Mellito Domi Adsum (+2/8)	M	Y	0/0	3433	30	15	1/0
7-1	Green	Benjios (0/6)	H	Y	0/0	6435	52	18	1/0
7-1	Red	Fastus Maximus (+2/10)	L	Y	0/0	7536	16	23	1/0
9-1	Yellow	Josephis (+2/9)	L	Y	0/0	6335	38	19	1/0
9-1	Blue	Sprinticus Rex (+2/8)	L	Y	0/0	7536	20	23	1/0
22-1	Purple	Luke Outtus (+1/7)	M	Y	0/0	5435	41	18	1/0
39-1	Orange	Flippus Maximus (+2/10)	H	Y	0/0	5324	27	16	1/0

Game transcript and map are on the website.

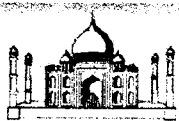
--"PUERTO RICO" (from p 4)

Hall(), L Indigo(), Corn(x), 3xSugar(x), 3xQuarry(x), Indigo(x), 2xIndigo(). SJ(2). 4d, 6 VP, 2 sugar, 1 corn, 1 indigo.

Brad Martin: Sm Warehouse(x), Tobacco St(xxx), Harbor(x), Guild Hall(x). 2xCorn(x), 3xTobacco(x), 2xCoffee(x), 2xCoffee(), Sugar(). Od, 18 VP, 4 tobacco, corn.

Paul Barrett: Sm Market(x), L Indigo(), Sm Indigo(x), C Roaster(x), Sm Sugar(x), Factory(x), Residence(x), Tobacco St(), Quarry(x), Coffee(x), 2xIndigo(x), Corn(x), Coffee(), Sugar(x), Tobacco(x), Indigo(). 4d, 5 VP, 2 coffee, 3 indigo, 1 corn.

John Butitta: Sm Market(x), Sm Indigo(x), Construction Hut(), Hospice(x), Tobacco St(xxx), Office(x), L Market(x), Wharf(). Indigo(x), 4xCorn(x), Quarry(x), 4xTobacco(x), Od, 13 VP, 2 indigo, 3 corn, 3 tobacco.



MAHARAJA

Turn 12



THE CAST:

Rudy Zodda: Green
Paul Barrett: Yellow

Dave Anderson: Purple
Wayne Morrison: Blue

Mughals (2): Grow 4 pp. Add 1A @ Rajputana (only 1 left in force pool). **1st Wave:** 2A Kashmir-Lahore-Delhi, 2A Lahore-Delhi-Agra (Rajputs submit, 2 Mughals w-Rajputana), 1A Punjab-Rajputana-Malwa, 3A Rajputana-Malwa (6,5,4,3:5,4,3,2 -1 Muhal, -2 Muslims, 2 Muslims r-Kandesh), 2A Afghanistan-Punjab-Sind, 2A Afghanistan-Punjab, 2A Afghanistan-Punjab-Rajputana, 2A Afghanistan-Punjab-Lahore, 2A Afghanistan-Punjab-Kashmir, 2A Afghanistan-Gandhara, 2A Afghanistan-Baluchistan. Akbar Afghanistan-Punjab-Delhi. Overpopulated: Mughals remove 1A @ Kashmir, Rajputana and Punjab. **2nd Wave:** Akbar, 2A Delhi-Agra-Oudh 4+1,1+1:3,1:6+1,3+1:5 -2 Muslims, -1 Mughal, 2A Malwa-Bundelkhand-Jaunpur, 1A Gandhara-Pujab-Delhi, 1A Rajputana-Malwa. Score 1 Raj Pt.

Portuguese: 2A, Albuquerque Arabian S-Maharashtra (4+1,1+1:4,1 1 Muslim r-Berar, 1 Muslim r-Kandesh). Build F to Sind. Give Arms to Mughals.

Dutch:

Score: Purple 55, Yellow 48, Blue 41, Green 14.

BOARD:

Pandys (0.5): 1A @ Golconda.

Marathas (2.5): 2A @ Bijapur, Mysore; 1A @ Andhra, Orissa.

Cholas (x): 1A @ Malabar, Sinhala.

Sinhalese (1.5): 2A @ Karnatak, Lanka.

Rajputs (0.5): 2A @ Bundelkhand, Ladakh; 1A @ Agra, Nepal; Sanga @ Gondwana.

Muslims (1): 3A @ Khandesh; 2A @ Maharashtra; 1A @ Berar, Bidar.

Mughals (0): 3A @ ; Akbar, 2A @ Oudh; 2A @ Baluchistan, Jaunpur, Malwa, Lahore, Rajputana, Sind; 1A @ Delhi, Gandhara, Kashmir, Punjab.

Portuguese: Albuquerque, 1A @ Maharashtra; 1A, F @ Gujarat, 1A @ Arabian.

Dutch: 2A @ Indian O.

British: 2A @ Arabian

LEGEND: A = Army, F = factory, L = leader, pp = population points, r-??? = retreats-???, w-??? = withdraws-???

Game transcript and map are posted on the website.



BRITANNIA

"Frisian"

Turns XI-XVI



The Cast: Nations in Italics are extinct, in parentheses are not yet in play.

A (Hanna): *Romans, R-Bs, Norsemen, (Norwegians)*

B (Anderson): *Welsh, Jutes, (Normans)*

C (Butitta): *Brigantes, Caledonians, Danes*

D (Boyum): *Picts, Irish, Angles*

E (Fruch): *Belgae, Scots, Saxons, (Dubliners)*

Turn XI

Angles (1): Grow 3.5 pp. Add 1A @ Bernicia. 4A Bernicia-Lothian-Strathclyde (6,4,4,3,3,1 -1 Brig r-Gal). Angles lose 2A to overpopulation. GM kills two at ranom, 1A @ Strathclyde & Pennines.

SCORE: C(52), D(47), A(45), E(43), B(34)

Turn XII

Board:

Welsh (B, 2): 3A @ Powys; 2A @ Clwyd; 1A @ Cornwall, Devon, Dyfed, Gwent.

Brigantes (C, 0): 3A @ Galloway; 2A @ Dalriada.

Picts (D, 0.5): 2A @ Alban, Mar, Skye; 1A @ Hebrides, Moray.

Caledonians (C, 1): 2A @ Caithness.

Irish (D, 2): 2A @ Cheshire, Gwynedd; 1A @ March.

Norsemen: 2R @ Atlantic, Irish; 2A @ Cumbria, Orkneys.

Danes: 6A, Bros @ North; 4R @ Frisian, North.

Saxons (E, 2.5): 2A @ N Mercia; 2A, Egbert @ Downlands; 1A @ Avalon, Essex, Hwicce, Kent, Lindsey, Norfolk, S Mercia, Suffolk, Sussex, Wessex. Alfred @ ?

Angles (D, 1.5): 4A @ Strathclyde; 2A @ Dunedin, Lothian, Pennines.

Saxons are King (+4 EVP and 1A @ S Mercia).

SCORE: C(56), D(47), A(45), E(43), B(34)

Welsh (2): Grow 3.5 pp. Add 1A @ Powys. 4A Powys-Gwynedd (6,6,5,2:4,1 -2 Irish) 1A Clwyd-Powys.

Brigantes (C, 0): Grow 1 pp. Overpopulated, fight or starve....

Board:

Welsh (B, 2): 4A @ Gwynedd; 1A @ Clwyd, Cornwall, Devon, Dyfed, Gwent, Powys.

Brigantes (C, 1): 3A @ Galloway; 2A @ Dalriada.

Picts (D, 0.5): 2A @ Alban, Mar, Skye; 1A @ Hebrides, Moray.

Caledonians (C, 1): 2A @ Caithness.

Irish (D, 2): 2A @ Cheshire; 1A @ March.

Norsemen: 2R @ Atlantic, Irish; 2A @ Cumbria, Orkneys.

Danes: 6A, Bros @ North; 4R @ Frisian, North.

Saxons (E, 2.5): 2A @ N Mercia; 2A, Egbert @ Downlands; 1A @ Avalon, Essex, Hwicce, Kent, Lindsey, Norfolk, S Mercia, Suffolk, Sussex, Wessex. Alfred @ ?

Angles (D, 1.5): 4A @ Strathclyde; 2A @ Dunedin, Lothian, Pennines.

Legend: A = infantry army, C = cavalry army, F = fort, L = legion or leader, pp = population point, R = raider, r-??? = retreats to ???, w-??? = withdraws to ???, (*) = in melee, _#_ = attack by/against cav/legion

Current map and transcript can be found on the website.



BLACKBEARD

Turns 73-75



THE CAST:

1. (Barrett) Portugues: Sloop
3. (Bargender) Taylor, Sloop

2. (Zodda) Davis, Sloop
4. (Martin) Rackham, Schooner.

STATUS:

#	Captain	Ship	Hex	Spd	Cbt	Not	Cun	Unr	NW	H1	H2	Hostage	Attk
1	Portugues	Sloop	O15	+3	6	28	(2/3)	3	212	30	5	--	FSN
2	Davis	Sloop	H25A	+3	4	14	5	4	674	--	--	--	NP
4	Rackham	Scnr	C211	-2	5	0	2	7	0	--	--	--	--
4	Rhett	KC	T18	5	13								
3	Taylor	Sloop	O15	+3	6	0	3	4	0	45	--	--	
4	Ogle	KC	Box1	3	9sc								
2	Maynard	KC	Box1	4	14								
3	Herdman	KC	Box1	3	15								

The Board:

Guvs: Pro: 35, 46, 53, 31

Anti: 24, 54, 64

Merchants: Q22(S7), 66, 54, 16, 26(B6), 54, 52, 26, 24, 52, 52, 55, 55, 21, 61, 61, 45, O15, O15(??)

Warships: P18

Destroyed Port: 14, 32

Out-of-Play Pirates: Teach (#3)

Letter of Marque: P

Turn	Player	Action	Draw
73	4	Move Rhett T18 to O17	*D
74	2	Move HD 5+3 to L26.	*C, 23
		Two merchants appear at 23	31
75	2	HD attacks B6 3+3+4-6 vs DR ¹² = 8; B6 back to the cup	24
76	1		

STATUS:

#	Captain	Ship	Hex	Spd	Cbt	Not	Cun	Unr	NW	H1	H2	Hostage	Attk
1	Portugues	Sloop	O15	+3	6	28	(2/3)	3	212	30	5	--	FSN
2	Davis	Sloop	L26	+3	4	14	5	4	674	--	--	--	NP
4	Rackham	Scnr	C211	-2	5	0	2	7	0	--	--	--	--
4	Rhett	KC	T18	5	13								
3	Taylor	Sloop	O15	+3	6	0	3	4	0	45	--	--	
4	Ogle	KC	Box1	3	9sc								
2	Maynard	KC	Box1	4	14								
3	Herdman	KC	Box1	3	15								

The Board:

Guvs: Pro: 35, 46, 53, 31

Anti: 24, 54, 64

Merchants: Q22(S7), 66, 54, 16, 54, 52, 26, 24, 52, 52, 55, 55, 21, 61, 61, 45, O15, O15(??), 23, 2

Warships: P18

Destroyed Port: 14, 32

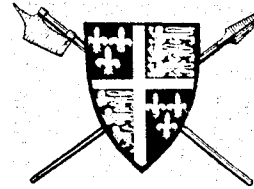
Out-of-Play Pirates: Teach (#3)

Letter of Marque: P

THAT AIN'T WHY, BUDDY

"I'm hated because I'm a hands-on practicing doctor and I analyze a case the way your doctor does. If you're well before the exposure (to chemicals) and after the exposure you're not, it's reasonable to assume that the exposure caused the disease."

Allergist Alan Levine



KINGMAKER

"King of Pain"

Turns 10-11

RoP

The Cast:

THE MAD HUNGARIANS (Dowrey): Percy (100), Lieutenant of Ireland (250), Archbishop of York (30), Bishop of Durham (30), Burgundian Crossbowmen (30), Carisbrooke, Northampton (20), Fitzalan (30), Warden of the Northern Marches (150), Duke of Lancaster (30). *Le Nicholas*. Event cards (2), Crown Cards (5).

THE CALIFORNIA CONNECTION (Scott): Pole (30), Chancellor of England (50), Scrope (10), Earl of Wiltshire (30), Chancellor of Cornwall (150), Swansea (20), Leicester (20), Holland (20), Duke of York (30), Scots Archers (20), Courtenay (30), Admiral of England (50). Event cards (5), Crown Cards (5).

KNIGHTS OF THE PRIVY POT (Deb Anderson): Mowbray (50), Treasurer of England (50), *Le Swan*, Lancaster (20), Hastings (10), 2 Flemish Crossbowmen (20), Bishop of Carlisle (30), Burgundian Crossbowmen (30), Cromwell (10), Earl of Kent (30), Constable of London (250). Event cards (3), Crown Cards (4).

THE STAFFORDSHIRE QUARTERSTAFFS (Shacklett): Stafford (30), Chamberlain of Chester (250), Scots Archers (20), Nottingham (20), Neville (50), Audley (10), Roos (10), Herbert (10), Talbot (30), Company of Saxons (20). Event cards (2), Crown Cards (3).

WESTERN FRONT (Martin): Howard (10), Duke of Exeter (20), Archbishop of Canterbury, *Le Rose*, Bristol (30), Coventry (20), Clifford (10), Earl of Worcester (30), Captain of Calais (350), Bishop of Lincoln (Gray (20), Berkeley (10), Newcastle. Event cards (2), Crown Cards (4).

NOTE: Duke of Lancaster doesn't have the Scots archers. Scrope moved to London.

Turn 10 Combat:

Percy & Duke of Lancaster (300) vs Hastings (110) @ Preston. "Vacillating Noble": dr = 6, affects MH; Percy is randomly selected, new odds are 30-110 (3-1 favor of KPP); dr = 3, Percy defects to KPP. Now it's Percy and Hastings (380) vs Duke of Lancaster (30) @ Preston. "Vacillating Noble": dr = 6; affects KPP; Hastings is randomly selected, new odds 270-30; no dr needed. #137, "War In Europe", 5-4, Courtenay, Howard, Fitzalan, Pole, Herbert. Duke of Lancaster captured and killed by KPP. *Le Nicholas* returned to Crown Deck; DoL is out of play for the nonce. Hastings transfers the two Flemish crossbowmen to Percy. Percy transfers Maggie and Eddie to Hastings.

CROWN CARDS: All draw one. Yours is _____.

Turn 11:

EVENTS:

MH: #34, "Storms at Sea". *Le Nicholas* & *Le Rose* must go to Ravenser or Whitby.

TCC: #119, "Royal Birth". dr = 6 = Lancastrian, dr = 2 = appears in Wales @ Cardigan. Call him Artie. KPP: #37, "Embassy from the Emperor". King (and Percy, etc) to Ravenser. Event deck will be reshuffled at end of the turn.

SQ: #112, "Plague in Dublin". n/e

WF: #43, "Peasant Revolt". Courtenay to Okehampton, Holland to Compton, Howard to Exeter, Scrope to Plymouth, Marshal to Bodmin (n/e).

MOVEMENT:

SQ: *Le Lucas* (Talbot) joins SQ at Whitby moves-S26-S27-S22-S19-S15; Talbot at Hd-Ie-Id-Ig. Stafford, Neville, Audley, Roos, Herbert, and Richard gather round and sing Kum-ba-ya at Ig. TCC donates a Crown card to MH. Pole London-Gr-Hq-Hr-Ia-Lynn. Courtenay Okehampton-Cg-Ch, Dd, Da & Bath. Holland Compton-Bf-Ch-Dd-Da-Bath. Scrope Plymouth-Bf-Ch-Dd-Da-Bath. *Le Christopher* Dartmouth-S8-S3-S2-S1-S15-(plays free move card)-S16-S20-S23-S29-Douglas. *Le Margaret* Maldon-S15-S22-S27-S26-Lynn. *Le Nicholas* interned in Lynn.

WF: Berkeley, Clifford & Grey London-Fk-Wallingford. Howard Exeter-Bh-Ck-Df-Dg-Ed. *Le Rose* Ravenser-S26-S27-S22-S19-S15.

MH gives Event card to TCC: Fitzalan Bamburgh-Re-Rb-Qg-Qh-Pg.

KPP: Cromwell Wallingford-Gm-Gl-Gk-Gl-Hh-(Free Move)-Hg-Hf-He-Ge-Milford Haven. *Le Swan* Preston-S30-S24-S20-S16-Milford Haven. Percy Ravenser-Ns-York(c), Hastings Preston-Ne-Nf-Ni-York(c), Mowbray holds.

--continued on p 2



LIQUOR IS QUICKER We Begin!

LiQ

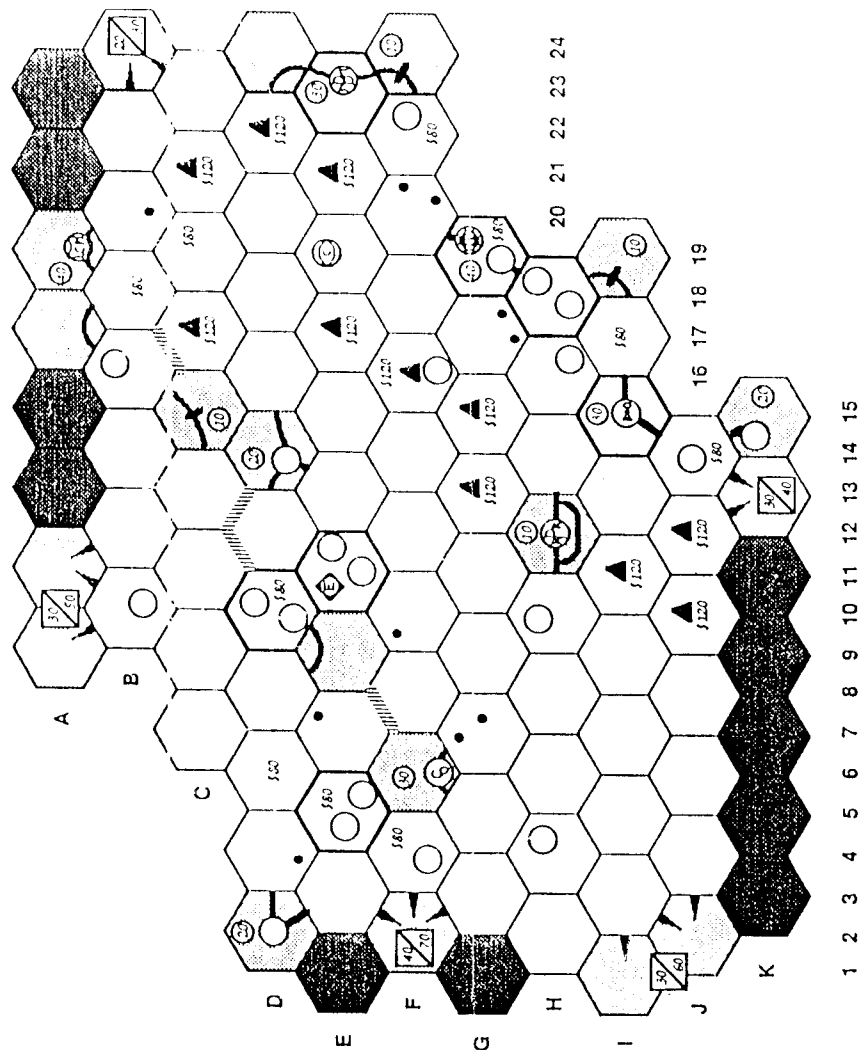
PLAYER STATUS:

Frueh \$600
Hanna \$600
Bailey \$600
Zieske \$600

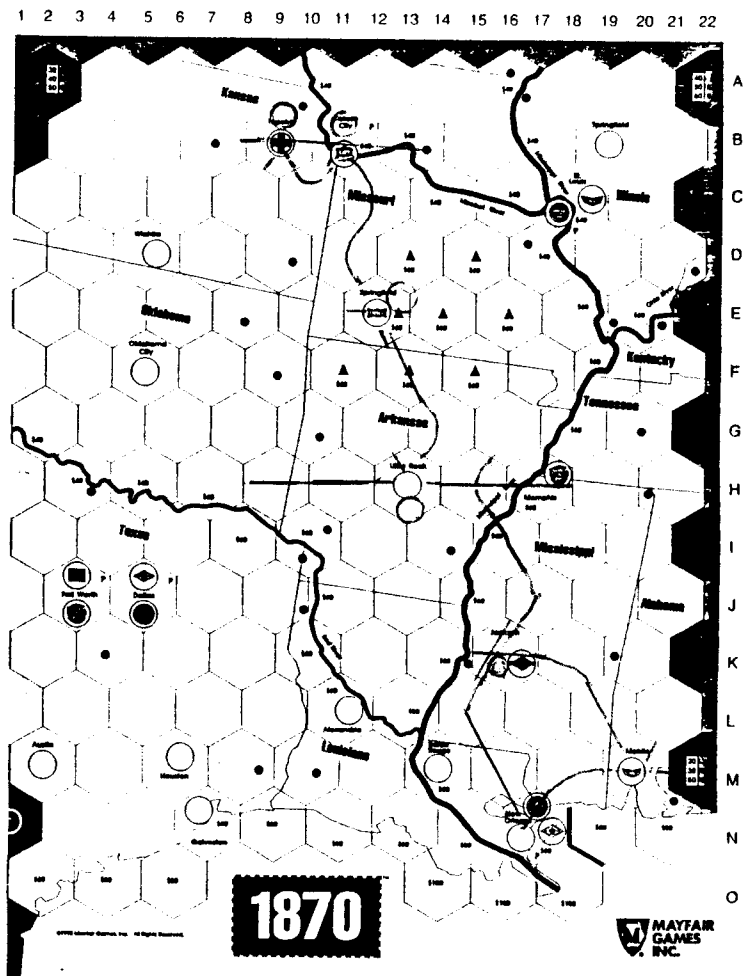
We'll begin the SR as soon as we get a vote on the bonds variant. See

<http://hometown.aol.com/prbolduc/boris/variants/bonds.html>

Last chance to join in!

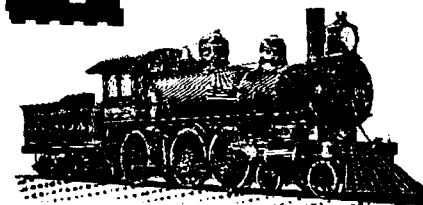


10



4

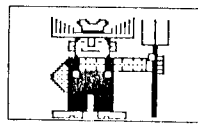
\$300



11

1870

1870
"ARTEMIS GORDON"
OR 3



PLAYER STATUS: (* Indicates Presidency)
Frueh: \$31, SC Co, KATYpc, 1 KATY, 3 GM&O
Bailey: \$35 MRB Co, 2 SL&SF*, 1 KATY, 2 GM&O
Hanna: \$26, GS Co., 6 IC*
Martin: \$31, GRS, 5 GM&O*, 1 KATY. <Priority>
Zieske: \$44, 5 KATY*.

CORPORATE STATUS:

Corp	Prez	Price	Par IO	Pool	Cash	Trains	Dest	Sh	Tokens
KATY	PZ	B90	82	0	0	\$290	223	N	2 B11.2.D
SL&SF	CB	C82	100	6	2	\$672	222	N	0 E12.2.D
IC	CH	F68a	68	4	0	\$680	--	N	0 (K16).1.D
GM&O	BM	F68b	68	0	0	\$260	223	N	0 M20.1.D

SR 3A:

Privates pay Martin \$5, Bailey \$10, Hanna \$15, Frueh \$30.
KATY: Plays #15(w) in B11. Run B9-B11 (\$50) and B11-E12 (\$50). Pay dividends (PZ +\$50, MF +\$10, CB +\$10, BM +\$10, Katy +\$20). Price to B100.
SL&SF: Play #4(w) in B13 (-\$40) and #5(e) in H13. Play token in B11 (-\$40). Run B11-B9 (\$50), B11-B13 (\$50) and B11-E12 (\$40). Pay dividends (CB +\$28, SL&SF +\$84). Price to C90. Buy 3-train (-\$180).
IC: Lay initial token in K16. Play tile #6 in K16(sw) and tile #8 in L15(se). No train. no run. no dividends; price falls to F64. Buy two 3-trains (-\$360).
GM&O: Play #15(w) in M20. Run M20-M22 (\$50), M20-N17-K16 (\$70). Pay dividends (BM +\$60, MF +\$36, CB +\$24). Price moves to F72. Buy "3" train (-\$180).

SR 3B:

Privates pay Martin \$5, Bailey \$10, Hanna \$15, Frueh \$30.
KATY: Play #14(e) in E12. Run B9-B11 (\$50), B11-B13 (\$40), and B11-E12-H13 (\$80). Pay dividends (PZ +\$85, MF +\$17, CB +\$17, BM +\$17, Katy +\$34). Price to B110. Buy 4-train (-\$300), all 2-trains scrapped.
SL&SF: Play #15(e) in H13. Run B11-E12-H13 (\$90). Pay dividends (CB +\$18, SFSF +\$54). Price to C100. Buy 4-train (-\$300).
GM&O: Play tile #14 in K16(sw). Run M22-M20 (\$50) & M22-N17-K16 (\$80). Pay dividends (BM +\$65, MF +\$39, CB +\$26 CB). Price increases to F76.
IC: Play #8 in K18(w) and #9 in L19(nw). Purchase GSC from CH for \$160. lace open port token in M20. Run K16-M20-M22 (\$100) and K16-N17-M20 (\$100). Pay dividends (CH +\$120, IC +\$80). Price to F68.

PLAYER STATUS:

(* Indicates Presidency)
Frueh: \$193, SC Co, KATYpc, 1 KATY, 3 GM&O
Bailey: \$178 MRB Co, 2 SL&SF*, 1 KATY, 2 GM&O
Hanna: \$336, 6 IC*
Martin: \$193, GRS, 5 GM&O*, 1 KATY. <Priority>
Zieske: \$179, 5 KATY*.

CORPORATE STATUS:

Corp	Prez	Price	Par IO	Pool	Cash	Trains	Dest	Sh	Tokens
KATY	PZ	B110	82	0	0	\$44	34	N	2 B11.2.D
SL&SF	CB	C100	100	6	2	\$250	34	N	0 E12.B11.1.D
GM&O	BM	F76	68	0	0	\$80	33	N	0 M20.1.D
IC	CH	F68	68	4	0	\$240	33	N	0 K16.1.D, GSC

The Bank has \$10,467.

AVAILABLE TRAINS: 4445555666888.10.10.12...

AVAILABLE TILES:

Yellow: 1(1), #2(1), #3(3), #4(6), #5(1), #6(1), #7(9), #8(17), #9(19), #55(1), #56(1), #57(5), #58(4),

#69(1)

Green: #14(2), #15(1), #16(2), #17(2), #18(2), #19(2), #20(2), #23(4), #24(4), #25(3), #26(2), #27(2), #28(2), #29(2), #141(2), #142(2), #143(1), #144(1)

SR 4:

Martin buys 1 IC (\$193 - 68 = 125)
Zieske buys 1 IC (\$179 - 68 = 101)
Frueh sells 3 GM&O (+\$228) & 1 Katy (+\$110) and buys Prez share of SSW (par @ \$82. -\$164). GM&O plummets to I64.
Zieske price protects KATY (-\$110).
Frueh buys 1 SSW (\$357-82 = \$275).
Bailey buys 1 IC (\$178-68 = \$110).
Hanna buys 1 Frisco from IO (-\$100).
Martin buys 1 GM&O (-\$64).
Zieske passes. Frueh buys 1 SSW (-\$82).
Bailey sells 1 KATY (+\$110) and 1 GM&O (+\$64), buys 1 IC (-\$68). IC is sold out. KATY to C100b. GM&O on shelf at I64.
Hanna buys Katy (-\$100). KATY is sold out.
Martin & Zieske pass. Frueh buys 1 SSW (-\$82).
Bailey buys 1 SLSF from Pool (-\$100).
Hanna buys 1 Frisco from IO (\$136-100 = \$36). (4 IO, 1 pool)
Martin & Zieske pass. Frueh buys 1 SSW (\$111-82 = \$29), SSW floats.
Bailey buys 1 Frisco from IO (\$116-100 = \$16).
Hanna, Martin & Zieske pass.
Frueh sells 1 SSW, buys 1 Pool Frisco (+\$82-100). SSW to D76.
Bailey has SLSF redeem 1 share from himself (\$16+100 = \$116). It's good to be the Prez!
Hanna, Martin, Zieske & Frueh pass. Bailey buys 1 Frisco from IO (\$116-100 = \$16).
All pass. Martin has the Priority. KATY & IC are sold-out; priced rise to B110 & E72 resp.

OR 4A:

Privates pay Martin \$5, Bailey \$10, IC \$15, Frueh \$30.
KATY: Lay #15(w) in B9. Run B9-B11-B13 (\$70) and B11-E12-H13 (\$90). Pay dividends \$16/share (PZ +\$96, CH +\$16, BM +\$16, Katy +\$32). Price to B120.
SL&SF: Lay tile 7(ne) in C10, lay tile 9(w) in H11. Run B9-B11-E12-H13 (\$120) and B13-B11-B9 (\$70). Pay dividends \$19/share (CB +\$76, CH +\$38, MF +\$19, Frisco +\$57). Price to C110.
SSW: Buy MRB Co. for \$80 from Bailey. Lay #57 in H17(w)(free w/MRB) and #9(w) in H15 & #9(w) in H9. No train or run - price falls to D72. Buy 4-train for \$300 (treasury = \$820-80-300 = \$440)
IC: Lay tile #8(nw) in J17 & #9(nw) in I16 (-\$60). Run K16-M20-M22 (\$100) and K16-N17-M20 (\$100). Pay dividends. (CB +\$40, CH +\$120, BM +\$20, PZ +\$20). Price rises to E76. Buy no train.
GM&O: Lay #19(e) in H15. Play token in K16 (-\$40). Run M20-N17-K16 (\$90) & K16-M20-M22 (\$90). Pay dividends (BM +\$108, CB +\$18). Price rises to H68.

PLAYER STATUS:

(* Indicates Presidency)
Frueh: \$70, SC Co, KATYpc, 5 SSW*, 1 SL&SF
Bailey: \$240, 4 SL&SF*, 2 IC, 1 GM&O
Hanna: \$210, 6 IC*, 2 SL&SF, 1 KATY (Priority)
Martin: \$210, GRS, 6 GM&O*, 1 KATY, 1 IC
Zieske: \$117, 6 KATY*, 1 IC

CORPORATE STATUS:

Corp	Prez	Price	Par IO	Pool	Cash	Trains	Dest	Sh	Tokens
KATY	PZ	B120	82	0	0	\$76	34	N	2 B11.2.D
SL&SF	CB	C110	100	2	1	\$207	34	N	1 E12.B11.1.D
SSW	MF	D72	82	5	1	\$440	4	N	0 H17.1.D, MRB
IC	CH	E76	68	0	0	\$195	33	N	0 K16.1.D, GSC
GM&O	BM	H68	68	0	3	\$40	33	N	0 M20.K16.D

Bank has \$10,195.

AVAILABLE TRAINS: 445555666888.10.10.12...

AVAILABLE TILES:

Yellow: 1(1), #2(1), #3(3), #4(6), #5(1), #6(2), #7(8), #8(16), #9(15), #55(1), #56(1), #57(4), #58(4), #69(1)

Green: #14(2), #15(0), #16(2), #17(2), #18(2), #19(1), #20(2), #23(4), #24(4), #25(3), #26(2), #27(2), #28(2), #29(2), #141(2), #142(2), #143(1), #144(1)

Q₁₀

SCRABBLE

Turns 5/6

A₁

JUNTA
No Bloodshed!
Years 6-7



Standard SCRABBLE rules apply. Everyone plays the same rack of tiles vs three computer opponents. You score what you propose to be played. We take the highest scoring submission (ties broken at random) and play that to the board.

Acceptability of words will be decided by the program (high score only), my unabridged dictionary, Ms Nar's SCRABBLE dictionaries, and common usage, so yes, we'll allow those much maligned four letter Anglo-Saxon words (but the program won't).

The Turn 5 rack is: I,O,Q,R,S,U,V

PLAYER	WORD(S)	SCORE	TOTAL
Theis	QUIdS	45 pts	241 pts
MacDuff	QUId	42 pts	238 pts
Nichols	QUIdS	45 pts	181 pts
York	QUIdS	45 pts	147 pts

ON THE BOARD

Team Boris:	QUIdS	45 pts	241 pts
MacAdam:	JO/Jo/Ow	39 pts	157 pts
MacBeth:	HeRTZ	54 pts	266 pts
MacCormick:	AUK	14 pts	112 pts

The current rack is: O,R,V.

There are no tiles left "in the bag".

LEGEND: Capital letters are being played. Small letters are already on the board. Underlined letters are blanks. The MacXxxx entries are computer generated.

Game transcript and board are on the website.



THE CAST: (and Table order)

Rick Copeland (Martini)
Chuck Hanna (Shades)
Wayne Morrison (Mustache)

Dave Anderson (Hat)
John Buttitta (Stickpin)

YEAR 6:

STATUS: There is a Coup excuse. The Bank is not safe.

Shades: *El Presidente* (1v), Labor Union (5v), Rigged Voting (5v), Monarchists (3v), 3C, 3S

Stickpin: 1st Brgd CO, Air Force CO, (2v), 5C, 1S

Mustache: 2nd Brgd CO (1v); 0v, 3C, 0S.

Martini: Admiral (1v), 5C, 0S

Hat: Minister & 3rd Brgd CO (2v), Conservatives (8v), Radicals (3v), Christian Democrats (5v), Students (3v), 1C, 3S

C: BUDGET: *El Presidente* receives the foreign aid of _____. He proposes: Hat and Stickpin 3 MP each, Mustache and Martini 0 MP. Round 1: Shades casts 13 votes Si. Stickpin casts 2 votes Si. Mustache casts 1 votes No and plays "Students Circulate Petition" (n/e). Martini casts 1 vote No. Hat casts 21 votes "Si". No second round voting. Budget passes 36-2.

D. LOCATIONS: Hat & Martini go to the Bank. Mustache & Shades are at home. Stickpin visits his Mistress.

E: ASSASSINATIONS & BANKING: Minister assassin targets Shades at Bank and misses. Hat makes a deposit.

Press:

The Hat family announces that we votes Yes for the Budget in all circumstances. In other news, We have found no suspects. So, we are labing the unfortunate incident last month, a accident waiting to happen. The only thing that we did find was a nice bookcase that eats office clerks. We are otherwise labed Assistant Support Specialists. It's true. We will let you figure out the anagram for it.

GM-Hat: Methinks you meant "acronym", not "anagram", unless there's something deeper here...

NSA-Ambassador Bolduc: 26 letters with a double degeneracy (ll), two triple degeneracies (a & p), a four-fold degeneracy (t), and a seven-fold degeneracy (s). Well that cuts it down from 4.03×10^{26} possibilities to 8.00×10^{23} . Most likely English, but Spanish, or Bananaese slang possible? Parse each into words? Sorry, Ambassador, this is not a high priority now.

All are invited to come up with anagrams for "Assistant Support Specialists". Free issue for the best.

Hat to World : Ok, Ok. It is a acronym, not a anagram. What do you expect me to use around here--proper English.??? It's like my wife has only a english minor from EMU.!!! Hmmm, no wonder she is trying from time to time to teach me SIGN language.

YEAR 7:

STATUS: There is a no Coup excuse. The Bank is safe.

Shades: *El Presidente* (1v), Labor Union (5v), Rigged Voting (5v), Monarchists (3v), 3C, 3S

Stickpin: 1st Brgd CO, Air Force CO, (2v), 5C, 1S

Mustache: 2nd Brgd CO (1v); 0v, 3C, 0S.

Martini: Admiral (1v), 5C, 0S

Hat: Minister & 3rd Brgd CO (2v), Conservatives (8v), Radicals (3v), Christian Democrats (5v), Students (3v), 1C, 3S

A. Card Draw: All draw two cards.

Due next: Conclusion of Card Draw, Budget Draw, Budget Announcement and vote.



HISTORY OF THE WORLD

CHRYSES

EPOCH VI



THE CAST:

Azure: Martin
Orange: Anderson

Ebony: Nichols
Purple: Zieske

Green: Wilson
Red: Morrison

EPOCH VI

GUARD:

AIII: Yel(c); **AIV:** Dan, Mor, Nap, SAp(c,PM); **AV:** Che, Est, GPC(AM), Mal, Man, Mek, Mon, SiK, Sze(c,AM), Tar(OM), Wei(RM), Yan(GM).
EI: Con, SAF; **EII:** Dnt, LRh(2), NEP(2); **EIII:** Alb(EM), CMA, Hig, Ire, NGa, WGa; **EIV:** Ara(c), EAn, Lev, MTI, Nub, Pal, PSD, UTI; **EV:** CEU(c), BSb(3).
GII: Cau; **GV:** GaD(c,RM), Irr.
OI: CAIn(C,F); **OIV:** Bal(3,C,F), Dal(2), Pin, Wan; **OV:** Sca, Sib, Wib, Win.
PIII: Cre, Pyr; **PV:** Hin, LTI(PM), PPI, Tur, Zag.
RI: App, Dee; **RIII:** EGh, GaV, Hok(C,f), UIn(PM); **RIV:** Cey(2), WGH, WSt; **RV:** EGh(C,RM), Architecture), LIn(GM), Sum, WDe.
Fleets: AtI(O), BlA(O), BoB(R), EMS(P), Nth(O), Red(2E), SoJ(A), WMS(P).
Vacant: Nil(AM).

SCORE (VP/SP): G(118/46), R(98/42), P(96/54), A(93/55), O(85/41), E(82/48)

Orange passes to Green. Red passes to Azure. Green passes to Ebony. Ebony passes to Red. Purple holds. Azure must pass to Orange.

MING DYNASTY (R): Play "Black Death" in China & SE Asia (Che=4, GPC=3, SiK=5, Sze=6, Tar=3, Wei=5, Yan=2, Yel=2, EIn=5, Irr=6, Mal=6, Mek=4, Sum=3 n/e). Play Emps Rev 4 @ UIn, EDe, EGh, WDe. Play IA,C,RP @ Che (r-1AV-Yan), 1F @ FSCS, 1A @ GPC (6,4:2 -1AV), 2A @ Wei (4,3:5; 4,2:3 -1RVI, 1AV), 1A @ Tar (5,5:3 -1AV), Sze (5,2:4 -1AV,c), Irr (6,1:5,3 -1GV), 2A @ GaV (3,2:4,1; 6,5:5,5 -1RVI, 1GV,c). Score: 98 + Architecture(1) + C(2x3) + M(2x3 + 5) + S(2) + China(D=6) + India(D=6) + SE Asia (P=2) + Eurasia(P=1) + N Amer(P=1) + Nip(P=1) = 135.

TIMARID EMIRATE (L): Play "Disaster @ Mt" in EGh (-RM,C +c). Play IA,C @ Tur (1PV r-Hin), 1A @ PPI (3,1:3,2 -1PV), PSD (6,3:2 -1EIV), 2A @ LIn (2,1:3; 3,2:1, 6,6:5 -1GVI,2RV), UIn (3,3:4; 5,1:4 -1GVI,1RIII), 1A @ Tar(5,1:6,6) -1GVI). Score: 118 + C(1x2) + M(1x2 + 1) + MidE(P=2) + India(P=3) + Eurasia(P=1) = 129.

INCAS & AZTECS (A): Play "Engineering", IA,C,f,AM @ NAn, IA,C,f @ Mex, 1A @ SAn, PSb. Score: 93 + C(2x2) + c(1) + M(1x2 + 2) + S(1) + China(P=3) + S Eur(P=2) + N Eur(P=2) + SE Asia(D=4) + Eurasia(D=2) + N Amer(P=1) + S Amer(P=2) = 119.

SARACENS (EIV): Play IA,C @ PSD (1GVI r-LIn), 2A @ Zag (2,1:2; 4,1:5; 4,1:2 -1EIV,1PV).

OTTOMAN TURKS (E): Play "Pirates", 1F @ Nth (2,2:6 -1EF). Play IA,C @ Wan (-1OIV), ...

SCORE (VP/SP): R(135/52), G(129/54), A(119/59), E(82+/63), P(96+/54+), O(85+/41+)

GUARD:

AIII: Yel(c); **AIV:** Dan, Mor, Nap, SAp(c,PM); **AV:** Est, Mal, Man, Mek, Mon, SiK, Yan(2,GM); **AVI:** Mex(C,f), NAn(C,f,AM), PSb, SAn.
EI: Con, SAF; **EII:** Dnt, LRh(2), NEP(2); **EIII:** Alb(EM), CMA, Hig, Ire, NGa, WGa; **EIV:** Ara(c), EAn, Lev, MTI, Nub, Pal, PPI, PSD(C), UTI, Zag; **EV:** CEU(c), BSb(3); **EVI:** Wan(C,EM).
GII: Cau; **GV:** LIn(2,GM), PPI, Tur(C), UIn(PM).
OI: CAIn(C,F); **OIV:** Bal(3,C,F), Dal(2), Pin; **OV:** Sca, Sib, Wib, Win.
PIII: Cre, Pyr; **PV:** Hin(2), LTI(PM).
RI: App, Dee; **RIII:** GaV, Hok(C,f); **RIV:** Cey(2), EDe(2), WGH, WSt; **RV:** EGh(2,C,RM, Architecture), Sum, WDe(2); **RVI:** Che(C,RM), GaD(RM), GPC(AM), Irr, Sze(AM), Tar(OM), Wei(RM).
Fleets: AtI(O), BlA(O), BoB(R), EMS(P), Nth(O), Red(2E), SoJ(A), SCS(R), WMS(P).
Vacant: Nil(AM).



PUERTO RICO

Turns 12-13



STATUS:

John Butitta: Gov. Sm Market(x), Sm Indigo(x), Construction Hut(), Hospice(x), Tobacco St(ooo), Office(x), L Market(x), Indigo(x), 3xCorn(x), Quarry(x), 4xTobacco(x), 1d, 8 VP, 1 indigo, 3 corn, 3 tobacco.

Ron Fisher: Hacienda(), Hospice(x), Sm Indigo(x), L Indigo(ooo), Office(x), L Sugar(,x,), 4xIndigo(x), 2xSugar(x), 3xQuarry(x), 2xCorn(x), Tobacco(), 2d, 12 VP, 4 indigo, 1 sugar, 2 corn.

Tom Butcher: Sm Sugar(x), Construction Hut(x), Sm Warehouse(x), Factory(x), Sm Indigo(x), Corn(x), 3xSugar(x), 3xQuarry(x), Indigo(x), Indigo(). SJ(2). 2d, 2 VP, 1 sugar, 1 indigo, 2 corn.
Brad Martin: Sm Warehouse(x), Tobacco St(ooo), Harbort(x), Guild Hall(x), Corn(x), 3xTobacco(x), 2xCoffee(x), 2xCoffee(), Sugar(), 2d, 10 VP, 4 tobacco, 2 corn.

Paul Barrett: Sm Market(x), L Indigo(x), Sm Indigo(x), C Roaster(x), Sm Sugar(x), Factory(x), Residence(), Quarry(x), Coffee(x), 3xIndigo(x), Corn(x), Coffee(), Sugar(x), 6d, 2 VP, 3 indigo, 1 coffee, 1 sugar, 1 corn.

AVAILABLE BUILDINGS: All but Sm Indigo, Sm Market, Hacienda, Construction Hut, Sm Warehouse, Hospice, Office, Factory, Guild Hall, Residence, City Hall.

AVAILABLE PLANTATIONS: Corn, 2xIndigo, 2xSugar, Tobacco

AVAILABLE ROLES: Builder, Captain(1d), Craftsman, Mayor, 2xProspector(1d), Settler, Trader.

COLONY SHIP: 7 colonists.

SHIPS: 6-ship, 7-ship, 8-ship

STOCK: 17 colonists, 89 VP, 8 coffee, 2 tobacco, 1 corn, 7 sugar, 1 indigo

TRADING HOUSE: indigo, sugar.

Turn 12

Governor Butitta chooses *Trader*, sells tobacco for (3 + 4 cr). Fisher, having Office, sells sugar for 2d. Trading House is full, no further trades allowed. House empties to stock.

Fisher chooses *Builder* and builds a L Market (-2d, 3cr). Butcher builds L Indigo (-1d, 2 cr). Martin builds Sm Sugar (-2d). Barrett builds Tobacco St (-4d, 1 cr). Butitta builds Wharf (-8d, 1 cr).

Butcher chooses *Captain* (+1d) and loads 2 corn (+2+1 VP) on 7-ship. Martin loads 2 corn (+2+1 VP). Barrett loads 3 indigo on the 8-ship (+3 VP). Butitta loads 3 corn (+3 VP); the 7-ship is full. Fisher loads 4 indigo (+4 VP). Butcher loads 1 indigo (+1 VP); the 8-ship is full. Martin must load 4 tobacco on 6-ship (+4+1 VP). Barrett tosses 1 sugar and 1 corn. Butitta must load 2 tobacco (+2 VP); the 6-ship is full. Fisher jettisons 1 corn. Ships sail and return goods to stock.

Martin chooses *Craftsman* and produces 3+1 tobacco and 1 corn. Barrett produces 3 indigo, 1 coffee, 1 corn and 2d. Butitta produces 3 corn, 3 tobacco, 1 indigo. Fisher produces 4 indigo, 1 sugar, and 2 corn. Butcher produces 1 sugar, 1 indigo, 1 corn, and 2d.

Barrett chooses *Settler* and takes Tobacco. Butitta takes Corn(x). Fisher is full. Butcher takes Indigo. Martin takes Corn. Remaining plantations go to discard and 6 new ones are drawn (including two from discards). Mayor and the two Prospectors gain 1d.

Turn 13

STATUS:

Ron Fisher: Gov. Hacienda(), Hospice(x), Sm Indigo(x), L Indigo(ooo), Office(x), L Sugar(,x,), L Market(), 4xIndigo(x), 2xSugar(x), 3xQuarry(x), 2xCorn(x), Tobacco(), 2d, 16 VP, 2 corn, 4 indigo, and 1 sugar.

Tom Butcher: Sm Sugar(x), Construction Hut(x), Sm Warehouse(x), Factory(x), Sm Indigo(x), City Hall(), L Indigo(,), Corn(x), 3xSugar(x), 3xQuarry(x), Indigo(x), 2xIndigo(). SJ(2). 4d, 6 VP, 2 sugar, 1 corn, 1 indigo.

Brad Martin: Sm Warehouse(x), Tobacco St(ooo), Harbor(x), Guild Hall(x), Corn(x), 3xTobacco(x), 2xCoffee(x), 2xCoffee(), Sugar(), Corn(). Od, 18 VP, 4 tobacco, corn.

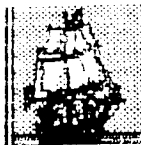
Paul Barrett: Sm Market(x), L Indigo(x), Sm Indigo(x), C Roaster(x), Sm Sugar(x), Factory(x), Residence(), Tobacco St(,), Quarry(x), Coffee(x), 3xIndigo(x), Corn(x), Coffee(), Sugar(x), Tobacco(), 4d, 5 VP, 2 coffee, 3 indigo, 1 corn.

John Butitta: Sm Market(x), Sm Indigo(x), Construction Hut(), Hospice(x), Tobacco St(ooo), Office(x), L Market(x), Wharf(), Indigo(x), 4xCorn(x), Quarry(x), 4xTobacco(x), Od, 13 VP, 2 indigo, 3 corn, 3 tobacco.

Governor Fisher chooses *Mayor* (+1d) and places colonists on L Sugar, L Market, and Hacienda. Butcher places two colonists on L Indigo and shifts 2 colonists from San Juan to Indigo plantations. Martin places colonist on Corn. Barrett places colonist on Tobacco St, shifts one from Indigo mill to Residence, and shifts Indigo plantation to tobacco plantation. Butitta places colonist on _____.
Mayor restocks the colony ship with _____ colonists.

--continued on

ON DECK



1835: Hanna, Zieske
1856: Hanna, Frueh, Zieske
AGE OF RENAISSANCE: Copeland
BALKAN WARS: K Wilson
BRITANNIA: Zieske, Copeland
DUNE: K Wilson, Martin
GUNSLINGER: Scott, Fowble, R Fisher; need 4 more
HISTORY OF THE WORLD I: Zodda
MACHIAVELLI: Nichols
MAGIC REALM: Buttitta, Deb A
MERCHANT OF VENUS: R Fisher, Deb A, Dowrey
RUSSIAN CIVIL WAR: Scott, Martin
SAMURAI (AH): Copeland
SETTLERS OF CATAN: Copeland, Scott
SILVERTON: Zieske, Deb A, Nichols
WIZARD'S QUEST: A Bargender, R Fisher, Deb A

OTHER POSSIBILITIES: 1829 (N OR S), 4000 AD, AGE OF RENAISSANCE, AIR BARON, ATTIKA, BALKAN WARS DIP, CIRCUS IMPERIUM, CIRCUS MINIMUS, DOWN WITH THE KING, EVO, GODSFIRE, KAMAKURA, KREMLIN, LIFTOFF, MONSTERS RAVAGE AMERICA, PLANET MINERS, SAMURAI, STELLAR CONQUEST, TITAN.

OUR SUBSCRIBERS

Dave & Debbie Anderson, 20832 Tuck Rd, Site 32, Farmington Hills, MI 48336; (248)473-7482; ravenclawnerdz@sbcglobal.net
 Christopher Bailey, 264 Fifth Avenue, Apartment 3C, New York, New York 10001; (917) 553-0070; christopher.bailey@yahoo.com
 Alan Bargender, 1517 Creekside Road, Green Bay, WI 54311; alanmb777@hotmail.com
 Ben Barrett; hd@htraganadragon.plus.com
 Paul Barrett; pdb@htraganadragon.plus.com
 Tom Blennerhassett; aquamonkey6@hotmail.com
 John Boardman, 234 East 19th St, Brooklyn, NY 11226-5302
 Peter Boyum, 522 U Street, Rio Linda, CA 95673; (916) 705-2091; peterboyum@msn.com
 Tom Butcher, 2129 Pinebrook Trl, Cuyahoga Falls, OH 44323-3303; thomas-butcher@sbcglobal.net
 John Buttitta, 339 Ninth, Neenah, WI 54956; (414) 725-7218; docjob@tds.net
 Rick Copeland, 1531 Pack Horse Rd, Winchester, VA 22603; (540) 888-4420; cope655321@topofva.net
 Bob Dowrey, 76 Potter Ave., Orchard Park, NY 14127; dowreyhome@adelphia.net
 Ron Fisher, 210 Normandy Dr, Wilmington, NC 28412; (910) 395-8330; skylark3@charter.net
 Mark Frueh, 1128 Olympus Dr, Naperville, IL 60540; (630) 357-7780; mark_frueh@msn.com
 Jim and Marcia Fryling, 5444 Bonnie, Kentwood, MI 49506; james_fryling@cornerstone.edu
 Tim Haffey Sr, 810 53rd Ave, Oakland, CA 94601; (510) 536-3513; trhaffey@yahoo.com
 Chuck Hanna, 379 Wilett Ct, Severna Park, MD 21146-1912; (410) 544-3077; chhanna76@yahoo.com
 Chris Hassler, 2000 S Armour Ct, La Habra, CA 90631; chassler@adelphia.net
 Tom Howell, 365 Storm King Rd, Port Angeles, WA 98363; (360) 928-9698; off-the-shelf@olympus.net
 Andy Lischett, 2402 Ridgeland Ave, Berwyn, IL 60402
 Lee McConnell, 2023 Stancrest Rd, Dublin, OH 43016-9546; blackhawk@netwalk.com
 Wayne Morrison, LTSI-ASAC Khamis 05267, 7150 Troy Hill Dr, Elkridge, MD 21075; thomascat_ksa@yahoo.com
 Cary Nichols, 756532-938 S FM 1673, Snyder, TX 79549-8812
 Gerry Paulson, Box 156, Amisk, AB T0B-0B0 CANADA; hanginga@telusplanet.net
 John Quigley, 8266 Yeakel Road, Zionsville, PA 18092; 215-541-0342; john@quigleyclan.com
 Mike Scott, 16603 Colonial Dr, Fontana, CA 92336; (909) 357-6030; mikesmag2@juno.com
 Jack & Rose Shacklett, 365 Hobbs-Reesor Rd, Vine Grove, KY 40174; (502) 828-4281; pilotshack@yahoo.com
 Bro Bob Theis, 1325 Westlake Ave, Los Angeles, CA, 90006
 Kerry Watson, 21138 Clovermook Ln, Neenah, WI 54956; kwatson1@new.rr.com
 Graham Wilson, 48 Harbourview Cres, Toronto, Ontario M8V 4B1; grahamaw@rogers.com
 Kevin Wilson, 18623 Santa Maria Dr., Baton Rouge, LA 70809-6702; (225) 751-3857; ckevinw1@cox.net
 Andrew York, PO Box 201117, Austin, TX 78720-1117; wandrew@compuserve.com
 Paul Zieske, 3501 Keenan Lane, Glenview, IL 60025; (847) 498-9237; zieskep@juno.com
 Rudy Zodda, 7 Hansen Ave, New City, NY 10956; (845) 708-9056; rzodda@aol.com

 DEADLINE FOR MOST GAMES IS 1800 CENTRAL TIME 3 Mar 06

The Bottom Line

This is **BORIS THE SPIDER**, a 'zine dedicated to the play of multiplayer games. BORIS is usually published following the first Friday of the month by Paul & Meg Bolduc, 203 Devon Ct, Ft Walton Beach, FL 32547-3110 and currently has a subscription price of \$10.50 for 12 issues in hardcopy or a token \$1 by e-mail (waived if overseas). A hardcopy sub will also include an e-mail sub. Make checks payable to "Paul Bolduc". BORIS can be reached at (850) 863-9081, or prbolduc@aol.com. If phoning, expect to be greeted by an answering machine. If we're here, not engaged in an epic computer battle or enthralled in baseball, hockey, or college football, and recognize your voice, you may get to talk to a real human, so don't hang up upon hearing our record-d message (it changes every power outage). Visit the BORIS Website at:

<http://hometown.aol.com/prbolduc/boris/borishome.htm>

Source of the Nile

Turn 46



The Cast:

Brad Martin
 Andrew York

Jason Bargender
 Don Chinnery

D&D Anderson

Published: Published: DD12 (lake, +79 acres), DD11 (lake, +75 acres), CC11 (lake, +88 acres), AA13 (veldt, river from 1 and 4 to 2), Z14 (veldt, river from 5 to 4, cataract, waterfall is 350 feet), Z13 (veldt, river from 1 to 2), G3 (jungle, river from 1 to 5), F3 (jungle, river from 1 and 3 to 4), E4 (jungle, river from 3 and 6 to 4), D3 (lake +38 acres), G4 (jungle, river starts and runs to 6), G24 (jungle, river from 3 to 6), H24 (swamp), G22 (mountain, river begins and extends to 4), H21 (desert, river from 1 to 3, oasis), I22 (veldt, river from 6 to 3), J19 (swamp), J18 (veldt), K18 (veldt), P2 (swamp), O4 (lake, +21 acres), N4 (lake, +33 acres), FF8 (mountain, river from 6 to 5, cataract), FF7 (jungle/swamp), EE8 (jungle/swamp), EE9 (mountain, river from 3 to 1, 65 foot waterfall), DD8 (jungle/swamp), GG5 (veldt, river to 1), FF5 (veldt, river from 4 to 1), EE6 (desert, river from 4 to 1), DD6 (veldt, river from 4 to 2, 85 ft waterfall), DD7 (jungle/swamp), CC6 (veldt), BB6 (veldt, river to 5), BB5 (mountain, river from 2 to 4 and 5), CC4 (desert, river to 4), DD3 (swamp), CC5 (desert), DD10 (lake, +32 acres), DD9 (lake, +56 acres), CC10 (veldt), CC9 (jungle, river begins and flows to 1), BB10 (jungle, river from 4 to 1), AA11 (jungle, river from 4 to 1), AA12 (veldt), Z12 (veldt, river 4 to 5), CC12 (lake), F4 (veldt, river 3 to 5), G5 (swamp), F5 (desert, river to 4), U3 (jungle), U4 (veldt), V5 (jungle, river from 1 to 3), W6 (jungle, river from 6 to 2), V6 (jungle), U6 (jungle, river from 5 to 1), U7 (jungle, river to 3).

Positions still available for fearless explorers. Contact Alan Bargender if interested.

STELLAR CONQUEST

Kurzor Dax: Awaiting orders for Production 32 and Movement 33-36.